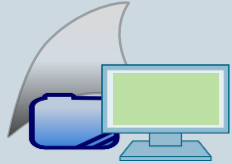


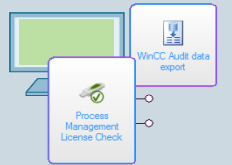
PM-QUALITY V10 What's new

PM-QUALITY

New Features in Version 10.0



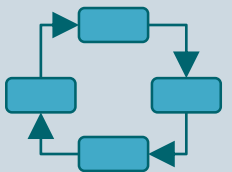
Tag import with filter options



New PM-SERVER function blocks



Data transfer from WinCC Audit and PM-CONTROL Audit



Phases based on state models

PM-QUALITY

New Features in Version 10.0



Printing batch reports on multiple printers



Support of new operating system and SCADA system versions, OPC UA



Support of new SQL Server versions

PM-QUALITY

New Features in Version 10.1



Support of new SCADA system versions

PM-QUALITY

New Features in Version 10.3



Support of new SCADA system versions



Support of new SQL Server versions



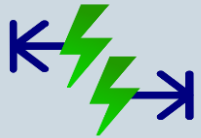
Support of new operating system versions

PM-QUALITY

New Features in Version 10.5



PM-AGENT Unified



Integrated batch start and batch end triggers



Batch report layouts for multiple production units

PM-QUALITY

New Features in Version 10.5



Support of new SCADA system versions



Support of new SQL Server versions including 64 bit

Copy Project

PM-QUALITY

New Features in Version 10.6



Support of new SCADA system versions



Connection to the process control system BRAUMAT/SISTAR

PM-QUALITY

New Features in Version 10.7



User Interface in Chinese

New in Version 10.0

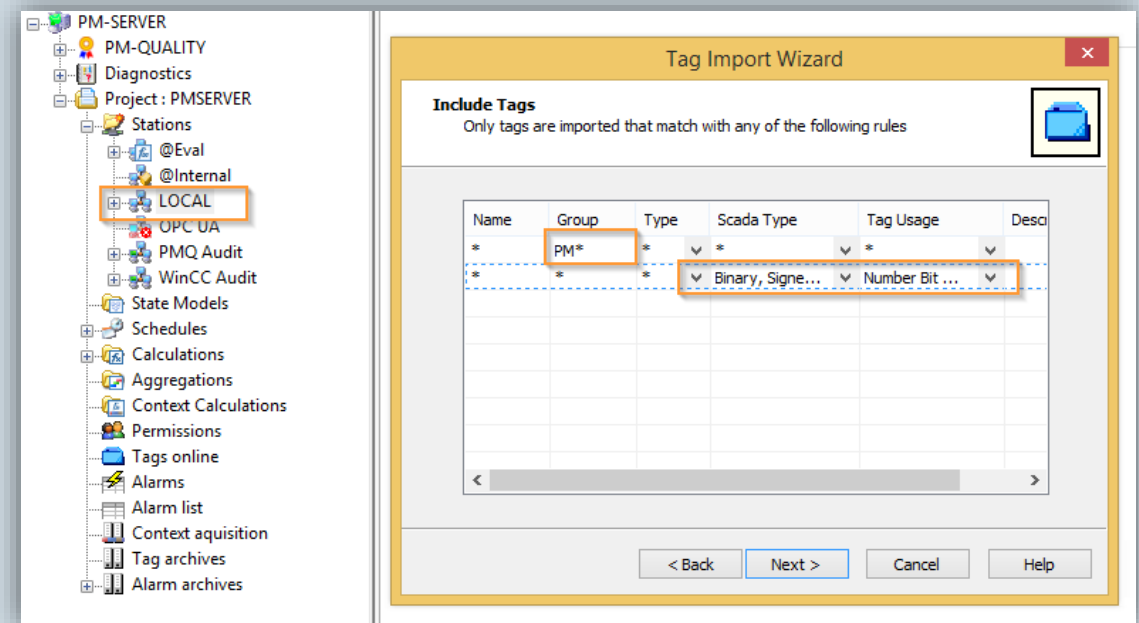
PM-AGENT Station: Tag import with filter options

During the configuration of a PM-QUALITY project you have to import the tags of a WinCC project into the PM-SERVER.

The PM-SERVER now allows to define a filter for importing only the tags which are relevant for the PM-QUALITY project.

Tags which are used only in the SCADA system itself can be excluded.

This improves the performance and clarity.



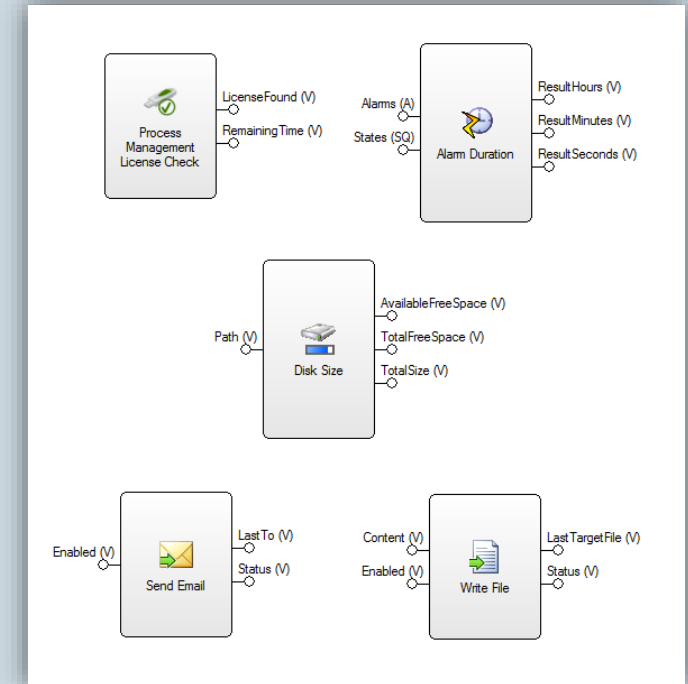
New in Version 10.0

New PM-SERVER function blocks

PM-SERVER is able to calculate values depending on input values. A calculation can range from simple arithmetic calculations to complex operations.

Among others these new function blocks are now available:

- Process Management license check
- Evaluating alarm duration and state models
- Monitoring the size of directories and drives
- Sending calculation results via email
(e.g. Alarm analysis or as signalization of events)
- Saving calculation results in files
(e.g. Alarm analysis or as signalization of events)



New in Version 10.0

Acquisition of audit trail entries in a batch report

Use PM-SERVER function blocks and text import stations to import audit trail entries for batch reporting

Available sources:

- PM-CONTROL Job Control Audit
- WinCC Audit

PM-CONTROL Audit:

Time Stamp	OrderName	ParameterName	ValueBefore	ValueAfter	BatchName	LastChangedByUser
4/8/2016 1:10:20 PM.437	Vollkornbrot	Butter	0	0	08-04-2016 BK VB 2.3-03/PS 1	PM-CONTROL
4/8/2016 1:10:20 PM.437	Vollkornbrot	Eier	0	0	08-04-2016 BK VB 2.3-03/PS 1	PM-CONTROL
4/8/2016 1:10:20 PM.437	Vollkornbrot	Drehzahl	55	55	08-04-2016 BK VB 2.3-03/PS 1	PM-CONTROL
4/8/2016 1:10:20 PM.437	Vollkornbrot	Rührzeit	17	17	08-04-2016 BK VB 2.3-03/PS 1	PM-CONTROL
4/8/2016 1:10:20 PM.437	Vollkornbrot	Hefe	67.3	67.3	08-04-2016 BK VB 2.3-03/PS 1	PM-CONTROL
4/8/2016 1:10:20 PM.437	Vollkornbrot	Wasser	0.50	0.50	08-04-2016 BK VB 2.3-03/PS 1	PM-CONTROL
4/8/2016 1:10:20 PM.437	Vollkornbrot	Zucker	0	0	08-04-2016 BK VB 2.3-03/PS 1	PM-CONTROL
4/8/2016 1:10:20 PM.437	Vollkornbrot	Mehl	1500	1500	08-04-2016 BK VB 2.3-03/PS 1	PM-CONTROL
4/8/2016 1:10:20 PM.437	Vollkornbrot	Salz	5	5	08-04-2016 BK VB 2.3-03/PS 1	PM-CONTROL
4/8/2016 1:10:20 PM.437	Vollkornbrot		nicht getrennt	nicht getrennt	08-04-2016 BK VB 2.3-03/PS 1	PM-CONTROL
4/8/2016 1:10:20 PM.437	Vollkornbrot		Vollkorn	Vollkorn	08-04-2016 BK VB 2.3-03/PS 1	PM-CONTROL
4/8/2016 1:10:20 PM.437	Vollkornbrot	Eier_getrennt	0	0	08-04-2016 BK VB 2.3-03/PS 1	PM-CONTROL
4/8/2016 1:10:20 PM.437	Vollkornbrot	Wasser_kalt_warm	0	0	08-04-2016 BK VB 2.3-03/PS 1	PM-CONTROL
4/8/2016 1:10:20 PM.437	Vollkornbrot	Backtemperatur	210	210	08-04-2016 BK VB 2.3-03/PS 1	PM-CONTROL
4/8/2016 1:10:20 PM.437	Vollkornbrot	Backzeit	70	70	08-04-2016 BK VB 2.3-03/PS 1	PM-CONTROL

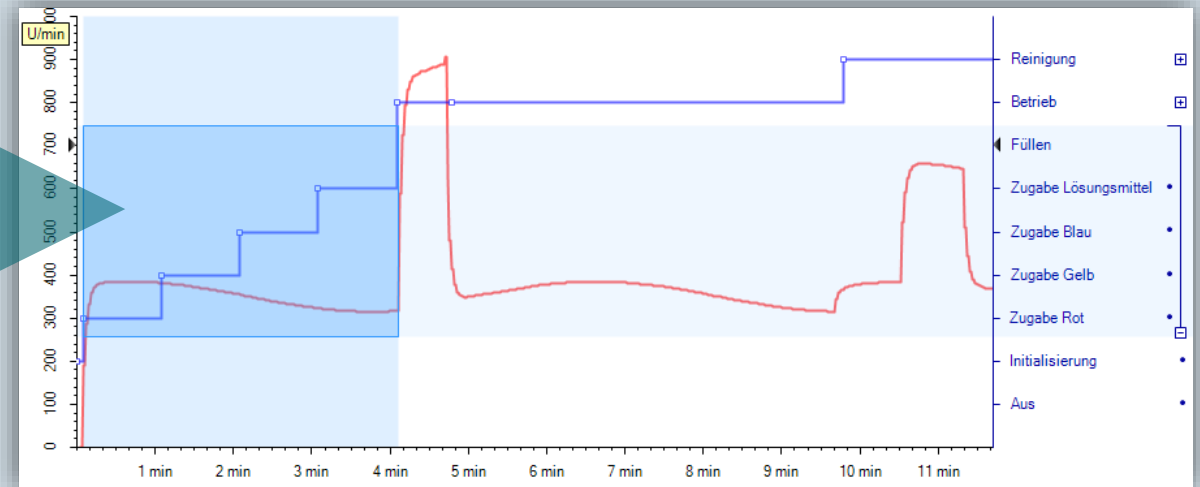
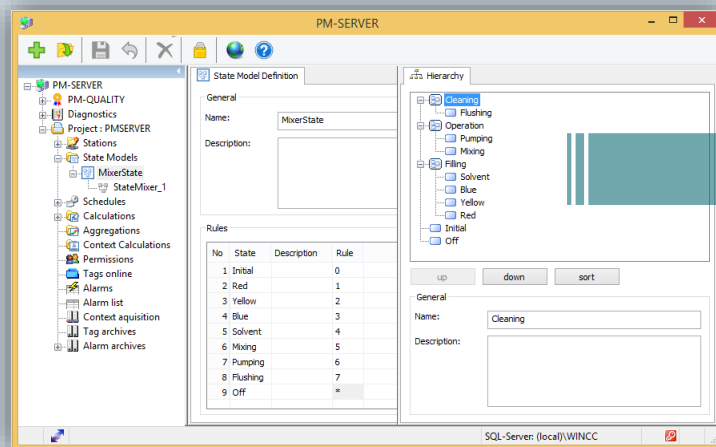
WinCC Audit:

TIMESTAMP	COMMENTS	EVENTITEM	EVENTTYPE	APPLICATIONNAME	APPUSER	PCNAME	OSUSER	AUDITTYPE	NUMBER
4/11/2016 11:09:38 AM.273	New Overview Picture created	OverView.Pdl	CHECK_IN	WinCCAudit	administrator	WIN-CG127P6VNK3	CoCUser	DC	49
4/11/2016 11:09:47 AM.777	New picture for PM-QUALITY Production Units created	ProductionUnit.Pdl	CHECK_IN	WinCCAudit	administrator	WIN-CG127P6VNK3	CoCUser	DC	50
4/11/2016 11:10:01 AM.487	Add PMQ Production unit "Mixer" to Overview	OverView.Pdl	CHECK_OUT	WinCCAudit	administrator	WIN-CG127P6VNK3	CoCUser	DC	51
4/11/2016 11:10:29 AM.750	PMQ Production unit "Mixer" to Overview added	OverView.Pdl	CHECK_IN	WinCCAudit	administrator	WIN-CG127P6VNK3	CoCUser	DC	52

New in Version 10.0

PM-QUALITY Phases based on state model definitions

- Phases based on state models
The PM-SERVER allows you to monitor and analyze the operation states of several components or complete production units. These states can be archived in PM-QUALITY as phases.
- Phases can now be displayed as curves in the Trend Curve Control.



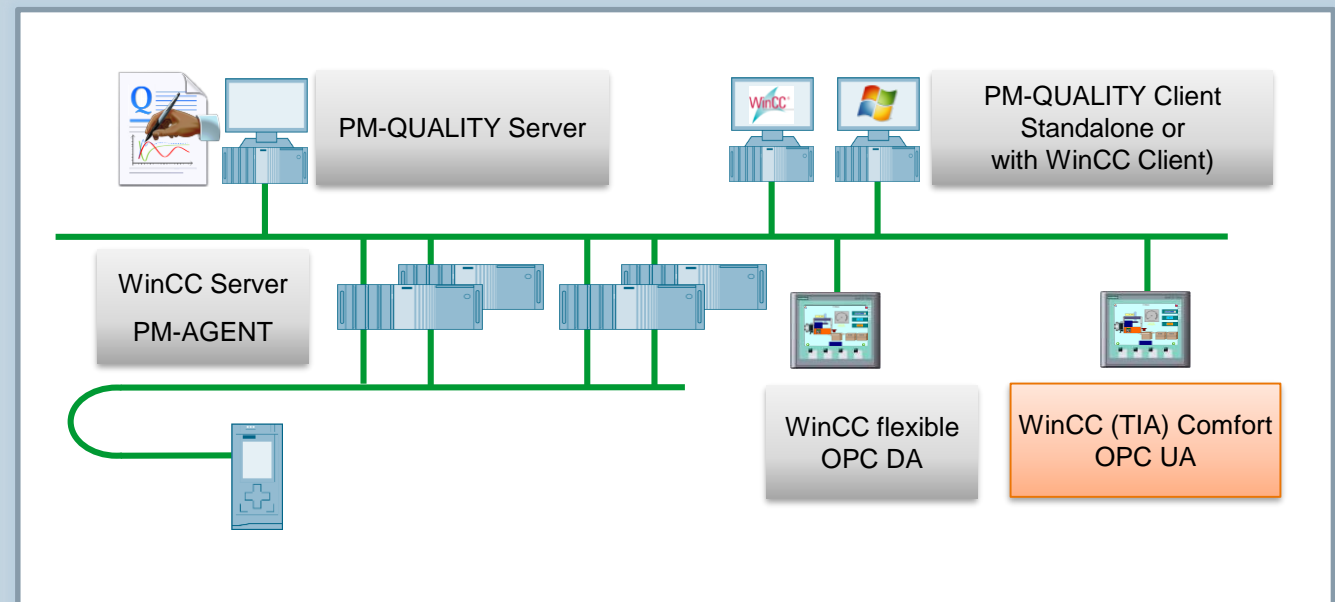
New in Version 10.0

Support of OPC UA

HMI systems like WinCC (TIA) Comfort / Advanced or other OPC servers provide their tag values via their individual integrated OPC UA interfaces

The following station types are available in PM-SERVER

- PM-AGENT (WinCC version 7.2 to 7.4)
- OPC DA station
- **OPC UA station**
- Text import station



New in Version 10.0 SCADA system versions

- The following SCADA system versions are supported:

- WinCC V7.2, V7.3, **V7.4**
- SIMATIC WinCC Runtime Professional **V13 (SP1)**
- SIMATIC WinCC Runtime Advanced **V13 (SP1)**

- SIMATIC WinCC Runtime Advanced

In addition to CSV files, RDB files can now also be used as archive import formats for text import stations in the PM SERVER.

New in Version 10.0 SQL Server versions

Support of the following SQL Server versions:

- SQL Server 2014 *
- SQL Server 2008
- SQL Server 2008 R2 *

* Standard- and Developer Edition (in 32 and 64 bit)



New in Version 10.0

Operating system versions

Support of the following operation system versions:

- Windows 7 Professional, Enterprise, Ultimate ^{32-/64-Bit}
- Windows 8.1 Professional, Enterprise ^{32-/64-Bit}
- Windows 10 Professional, Enterprise ^{64-Bit}
- Windows Server 2008 R2 ^{64-Bit}
- Windows Server 2012 R2 ^{64-Bit}



New in Version 10.1 SCADA system versions

- The following SCADA system versions are supported:
 - WinCC V7.2, V7.3, V7.4
 - SIMATIC WinCC Runtime Professional V13 (SP1), **V14 (beginning with Update 2)**
 - SIMATIC WinCC Runtime Advanced V13 (SP1), **V14 (beginning with Update 2)**

New in Version 10.3 SCADA system versions

- The following SCADA system versions are supported:
 - WinCC V7.2, V7.3, V7.4, **V7.4 (SP1)**
 - SIMATIC WinCC Runtime Professional V13 (SP1), V14, **V14 (SP1)**
 - SIMATIC WinCC Runtime Advanced V13 (SP1), V14, **V14 (SP1)**

New in Version 10.3

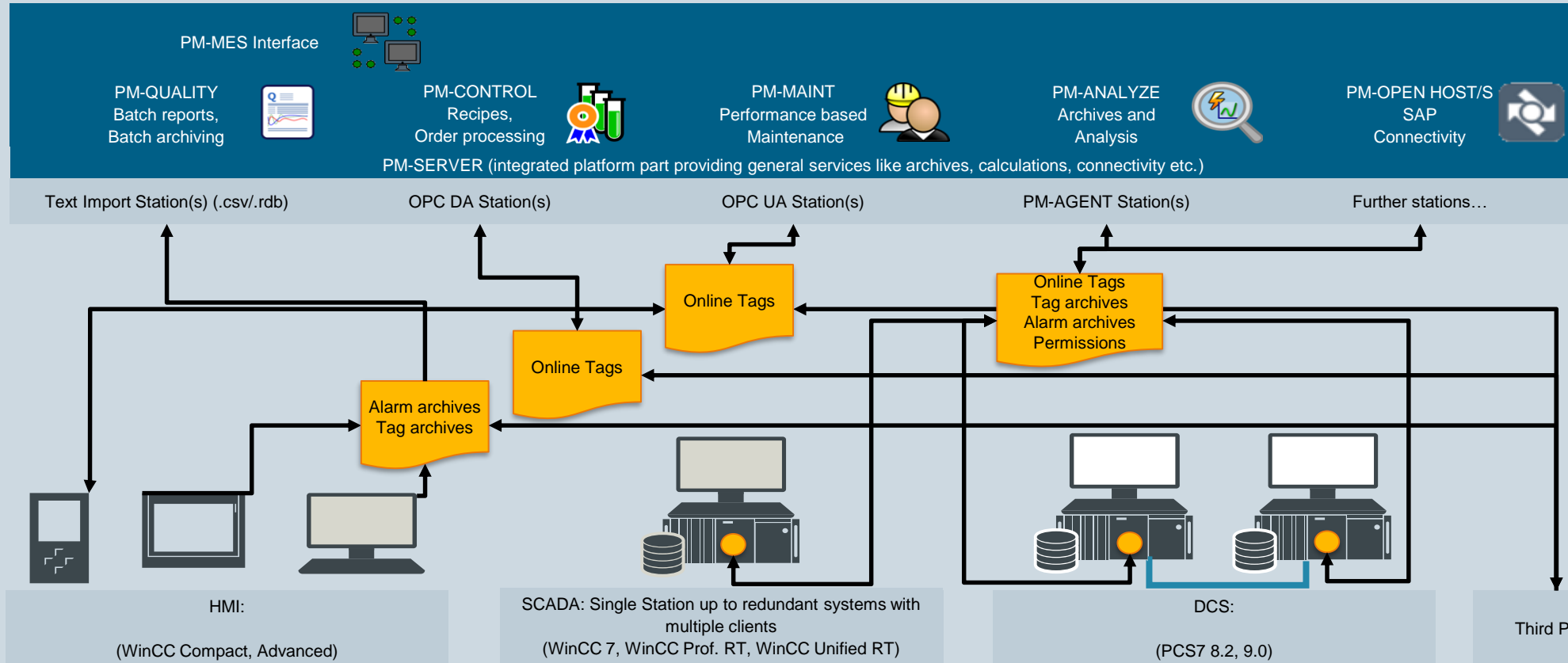
Operating system versions

Support of the following operation system versions:

- Windows 7 Professional, Enterprise, Ultimate ^{32-/64-Bit}
- Windows 8.1 Professional, Enterprise ^{32-/64-Bit}
- Windows 10 Professional, Enterprise ^{64-Bit}
- Windows Server 2008 R2 ^{64-Bit}
- Windows Server 2012 R2 ^{64-Bit}
- **Windows Server 2016** ^{64-Bit}



New in Version 10.5 PM-AGENT Unified



New in Version 10.5 PM-AGENT Unified



PM-AGENT Unified is the successor of the current PM-AGENT

Property / Function	PM-AGENT	PM-AGENT Unified
Compatible with WinCC V7.2, V7.3, WinCC RT Prof. V13	●	
Compatible with WinCC V7.4, V7.4SP1, WinCC RT Prof. V14, V14 SP1, V15	●	●
Compatible with WinCC V7 >= V7.5, WinCC RT Prof >= V15.1		●
Compatible with WinCC RT Unified V16*		●
Program start / Runtime environment	Interactive (startup list) As a service(PMServiceConfig)	Operating system service + Control Center Application
Automatic data buffering on connection failure	limited	● (default 30 days)
Transmission protocol PM-SERVER ↔ PM-AGENT	proprietary	https

New in Version 10.5

Integrated batch start and batch end triggers

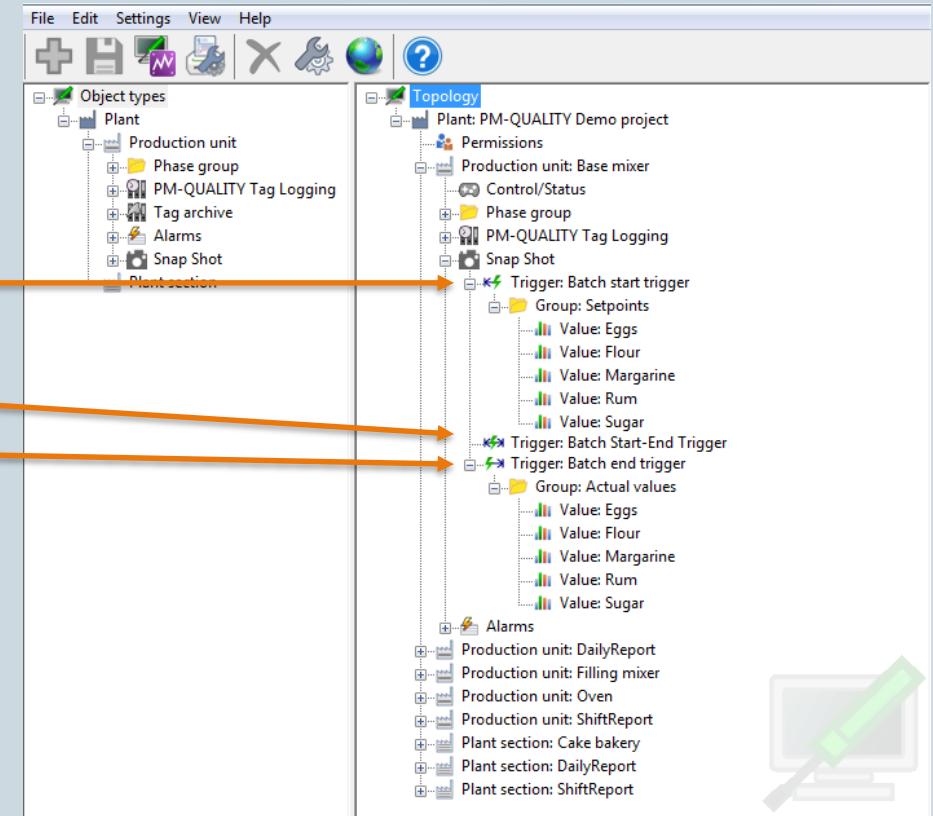
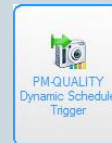
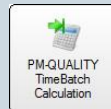
Integrated triggers at the batch start, batch end and batch start / end events can be used to record arbitrary data at the corresponding condition.

Each production unit now automatically has a

- Batch start trigger
- Batch start-end trigger
- Batch end trigger

Up to now, in order to create a batch start trigger the batch status response tag from PM-QUALITY has to be used.

A batch end trigger was only possible by using a function block inside PM-SERVER.



New in Version 10.5 SCADA system versions

- The following SCADA system versions are supported:
 - WinCC V7.2, V7.3, V7.4, V7.4 (SP1), **V7.5**
 - SIMATIC WinCC Runtime Professional V13 (SP1), V14 (SP1) , **V15, V15.1**
 - SIMATIC WinCC Runtime Advanced V13 (SP1), V14 (SP1), **V15, V15.1**

New in Version 10.5 SQL Server versions

Support of the following SQL Server versions:

- SQL Server 2008 and 2008 R2 *
- SQL Server 2014 *
- **SQL Server 2016 ***

* Standard- and Developer Edition (in 32 und 64 bit)



New in Version 10.6

Connection to process control system BRAUMAT/SISTAR

- New PM-QUALITY Runtime for connecting the process control system BRAUMAT/SISTAR
 - In PM-QUALITY available from Version 10.6
 - BRAUMAT/SISTAR uses (from Version 8) PM-QUALITY as standard reporting system
 - Following data types are supported:
 - Step reports - recipe data, actual values
 - KOPs (Key Operational Parameter)
 - Material movements
 - Tank history information (temperatures, levels and status)
 - Trends
 - Alarms

The screenshot displays the 'PM-QUALITY SISTAR: BRAUMAT Data Logging' window. It features a tree view on the left with columns 'Name' and 'Zustand' (Status). The tree view includes categories like 'Import batch events', 'Import KOPs', 'Import Material movements', 'Import Tank history', 'Automatic batch release', 'Automatic product batch release', 'Process archive data transfer', and 'Alarm data transfer'. The main area shows a list of log entries with columns 'Typ' (Type) and 'Text'. The entries include information about application startup, file watchers for various folders (BatchEvents, StepEvents, Kops, Mat_Movs, Tanks), and file event jobs for each category. The log entries are timestamped with dates like 2019-11-06 and times like 10:31:43.398.

Name	Zustand	Typ	Text	Zeit
Import batch events	Pause	Info	Application started	2019-11-06 10:31:40.986
Import step events	Pause	Info	PM-SERVER Project found.	2019-11-06 10:31:43.398
Import KOPs	Pause	Verbose	File watcher installed - import path c:\Temp\TestSistar\ImportFolder\BatchEvents; pattern: P*.csv.	2019-11-06 10:31:43.398
Import Material movements	Pause	Info	File event Job (Import batch events) initialized.	2019-11-06 10:31:43.414
Import Tank history	Pause	Info	Folder: c:\Temp\TestSistar\ImportFolder\BatchEvents	2019-11-06 10:31:43.414
Automatic batch release	Pause	Verbose	File watcher installed - import path c:\Temp\TestSistar\ImportFolder\StepEvents; pattern: S*.csv.	2019-11-06 10:31:43.414
Automatic product batch release	Pause	Info	File event Job (Import step events) initialized.	2019-11-06 10:31:43.414
Process archive data transfer	Pause	Info	Folder: c:\Temp\TestSistar\ImportFolder\StepEvents	2019-11-06 10:31:43.414
Alarm data transfer	Pause	Verbose	File watcher installed - import path c:\Temp\TestSistar\ImportFolder\Kops; pattern: K*.csv.	2019-11-06 10:31:43.414
		Info	File event Job (Import KOPs) initialized.	2019-11-06 10:31:43.414
		Info	Folder: c:\Temp\TestSistar\ImportFolder\Kops	2019-11-06 10:31:43.414
		Verbose	File watcher installed - import path c:\Temp\TestSistar\ImportFolder\Mat_Movs; pattern: M*.csv.	2019-11-06 10:31:43.414
		Info	File event Job (Import Material movements) initialized.	2019-11-06 10:31:43.414
		Info	Folder: c:\Temp\TestSistar\ImportFolder\Mat_Movs	2019-11-06 10:31:43.414
		Verbose	File watcher installed - import path c:\Temp\TestSistar\ImportFolder\Tanks; pattern: V*.csv.	2019-11-06 10:31:43.414
		Info	File event Job (Import Tank history) initialized.	2019-11-06 10:31:43.414
		Info	Folder: c:\Temp\TestSistar\ImportFolder\Tanks	2019-11-06 10:31:43.414
		Info	Jobs initialized	2019-11-06 10:31:44.835

New in Version 10.6

Connection to process control system BRAUMAT/SISTAR

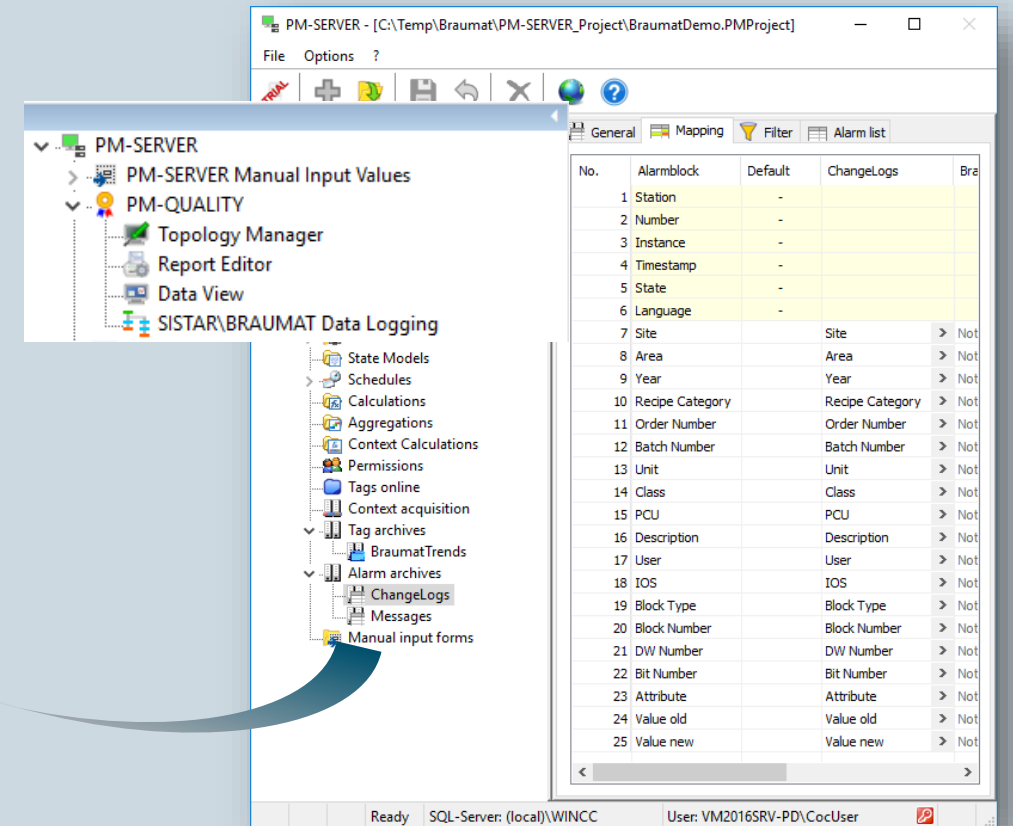
- Data transfer
 - The component **SQL Adapter Connector** of BRAUMAT/SISTAR Runtime Systems saves all relevant Data in CSV files
 - The PM-SERVER and a special PM-QUALITY BRAUMAT/SISTAR Runtime transfer the data to the Runtime Datenbank of PM-QUALITY
 - From there they are available for display in Trend Control or in the report.



New in Version 10.6

Connection to process control system BRAUMAT/SISTAR

- Integration in the PM-SERVER
 - If a BRAUMAT/SISTAR system is detected during the installation, the BRAUMAT/SISTAR Data Logging appears in the PM-SERVER Project tree.
 - Alarms and trends are first imported into segmented PM-SERVER archives and then transferred to PM-QUALITY as usual.



New in Version 10.6

Connection to process control system BRAUMAT/SISTAR

- Configuration in the PM-QUALITY Topology Manager
 - Alarm and trend configuration

The screenshot illustrates the configuration of alarm and trend data in the PM-QUALITY Topology Manager. The main interface shows a hierarchical topology tree for a 'Brewery' plant. Three key configuration windows are overlaid:

- Alarm group:** Configured for the group name 'Messages'.
- Tag archive - [Filter Inlet Pressure]:** A table listing trends and their archive tags. The table is as follows:

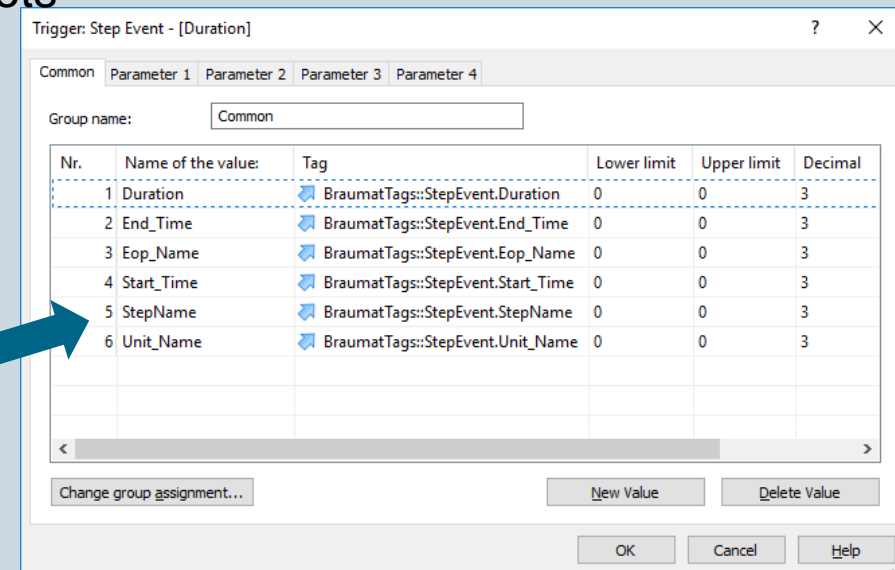
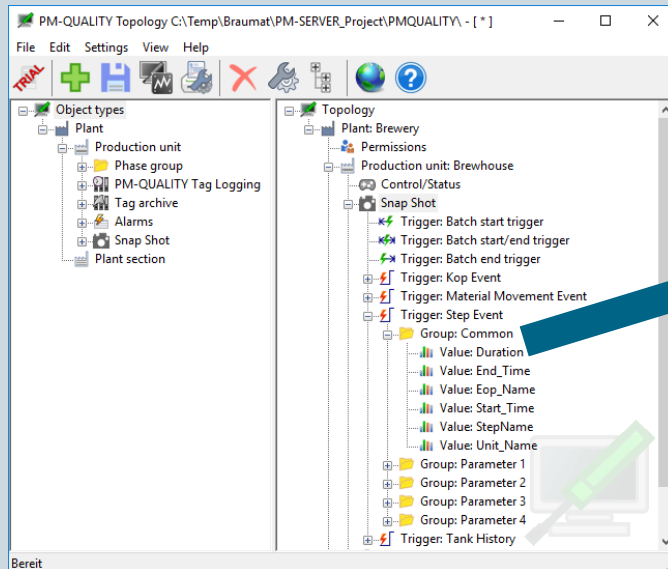
Nr.	Curve name	Archive tag	Lower limit
1	Filter Inlet Pressure	BraumatTrends:BraumatTrends:Trends\dblVal_8	0
2	Filter Outlet Pressure	BraumatTrends:BraumatTrends:Trends\dblVal_9	0
3	FT Press. Bottom	BraumatTrends:BraumatTrends:Trends\dblVal_4	0
4	FT Press. Top	BraumatTrends:BraumatTrends:Trends\dblVal_3	0
5	FT Temp. Bottom	BraumatTrends:BraumatTrends:Trends\dblVal_2	0
6	FT Temp. Middle	BraumatTrends:BraumatTrends:Trends\dblVal_10	0
7	FT Temp. Top	BraumatTrends:BraumatTrends:Trends\dblVal_1	0
8	Mash Tun Temperature	BraumatTrends:BraumatTrends:Trends\dblVal_5	0
9	Temp_42	BraumatTrends:BraumatTrends:Trends\Temp_42	0
10	Trans-Membrane Pressure	BraumatTrends:BraumatTrends:Trends\dblVal_7	0
11	Wort Cooler Temperature	BraumatTrends:BraumatTrends:Trends\dblVal_6	0
- PM-SERVER - [C:\Temp\Braumat\PM-SERVER_Project\BraumatDemo.PMProject]:** A table listing tags and their stations. The table is as follows:

No.	Name	Station	Tag
1	BraumatTrends:Trends\dblVal_1	BraumatTrends	Trends\dblVal_1
2	BraumatTrends:Trends\dblVal_10	BraumatTrends	Trends\dblVal_10
3	BraumatTrends:Trends\dblVal_2	BraumatTrends	Trends\dblVal_2
4	BraumatTrends:Trends\dblVal_3	BraumatTrends	Trends\dblVal_3
5	BraumatTrends:Trends\dblVal_4	BraumatTrends	Trends\dblVal_4
6	BraumatTrends:Trends\dblVal_5	BraumatTrends	Trends\dblVal_5
7	BraumatTrends:Trends\dblVal_6	BraumatTrends	Trends\dblVal_6
8	BraumatTrends:Trends\dblVal_7	BraumatTrends	Trends\dblVal_7
9	BraumatTrends:Trends\dblVal_8	BraumatTrends	Trends\dblVal_8
10	BraumatTrends:Trends\dblVal_9	BraumatTrends	Trends\dblVal_9
11	BraumatTrends:Trends\Temp_42	BraumatTrends	Trends\Temp_42

New in Version 10.6


Connection to process control system BRAUMAT/SISTAR

- Configuration in the PM-QUALITY Topology Manager
 - Event controlled data transfer with snap shots

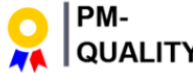


New in Version 10.6

Connection to process control system BRAUMAT/SISTAR



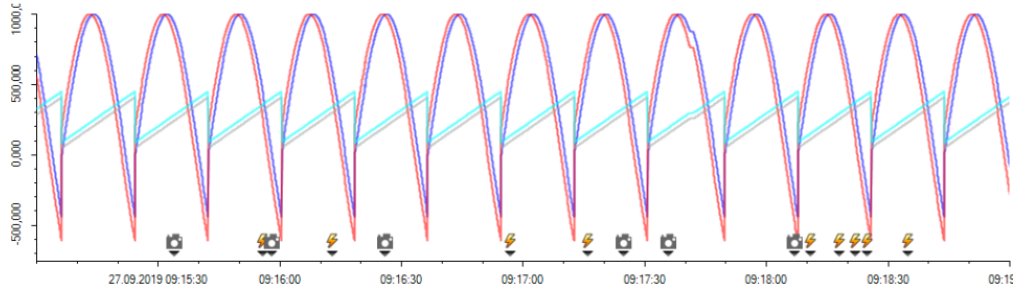
BRAUMAT Brewhouse Batch report



Print Date: 27.09.2019 10:11:05

Batch

Bezeichnung	Wert	Bezeichnung	Wert
Order name	Auftrag_10		
Product batch name	ProdBatch_001	Batch name	ProdBatch_001_CH_002
Batch start time	27.09.2019 09:15:00	Batch end time	27.09.2019 09:19:00
Timezone - Batch start time	W. Europe Daylight Time	Timezone - Batch end time	W. Europe Daylight Time
Recipe name	Dark wheat beer		
Customer	Wheat beer		



Name	Style	Unit	Minimum	Maximum	Average
FT Press. Top			-611,860	1000,000	483,800
FT Temp. Middle			90,000	450,000	271,762
FT Temp. Top			-442,520	1000,000	521,336
Wort Cooler Temperature			50,000	410,000	231,762

ChangeLogs:

Timestamp	State	Area	Unit	PCU	User	IOS	Attribute	Value old	Value new
27.09.2019 09:15:26.000	+	Filtrate	Bottle Filler 1	PCU33		IOS33	BA_RecType	65	66
27.09.2019 09:16:03.000	+	Filtrate	Bottle Filler 1	PCU33		IOS33	BA_RecNo	2	3
27.09.2019 09:16:31.000	+	Filtrate	Bottle Filler 1	PCU33		IOS33	NewStep	0	1
27.09.2019 09:16:51.000	+	Filtrate	PET Filler 1	PCU33		IOS33	BA_BNo	0	-1
27.09.2019 09:17:11.000	+	Filtrate	PET Filler 1	PCU33		IOS33	NewStep	0	1
27.09.2019 09:17:47.000	+	Filtrate	Bottle Filler 1	PCU33		IOS33	BA_BNo	0	-1
27.09.2019 09:18:19.000	+	Filtrate	Bottle Filler 1	PCU33		IOS33	BA_ONo	39	41
27.09.2019 09:18:39.000	+	Filtrate	Bottle Filler 1	PCU33		IOS33	BA_Year	18	19

Step report

Step name /	Start time / Parameter name	End time / Actual value	Duration / Set point	Unit name / Unit of measurement	Eop name /
032_00172_00005_00001	2019-09-27T07:15:26.000	2019-09-27T07:15:54.000	253585	FL2_Filter M3	Stand-By
	S10:Time	56978	56978	Sec.	
	S10:IDX	BF(00000000)	BF(00000000)	0	
	S10:Feed pump fix	0	0	%	
	S10:Circ. pump 02 fix	0	0	%	
	S10:Circ. pump 03 fix	0	0	%	
	S10:Flow MBL	0,1	0,1	hl/h	
	S10:Pressure inlet	3,02	3,02	bar	
	S10:Pressure outlet	3,03	3,03	bar	
	S10:Pressure module	3,02	3,02	bar	
	S10:Pressure filtrate	3,01	3,01	bar	
	S10:Temperature inlet	13,5	13,5	°C	
	S10:Temperature loop	13,3	13,3	°C	
	S10:Turbidity 90	0,008	0,008	EBC	
	S10:Turbidity 25	0,019	0,019	EBC	
	S10:TMP Pressure	-0,01	-0,01	bar	
	S10:BCH Beer volume	0	0	hl	
	S10:Beer flow time	0	0	min	
	S10:Aux. time	4189	4189	s	
	S10:Interval counter	0	0	-	
	S10:Interval 01	0	0	s	
	S10:Interval 02	0	0	s	
	S10:Interval 03	0	0	s	

SCADA system versions

- The following SCADA system versions are supported:
 - WinCC V7.2, V7.3, V7.4, V7.5 and **V7.5 SP1**
 - SIMATIC WinCC Runtime Professional V13 (SP1), V14 (> Update 2), V15, V15.1 and **V16**
 - SIMATIC WinCC Runtime Advanced V13 (SP1), V14 (> Update 2), V15 , V15.1 and **V16**
- SIMATIC WinCC Runtime Advanced

In addition to CSV files, RDB files can now also be used as archive import formats for text import stations in the PM SERVER.

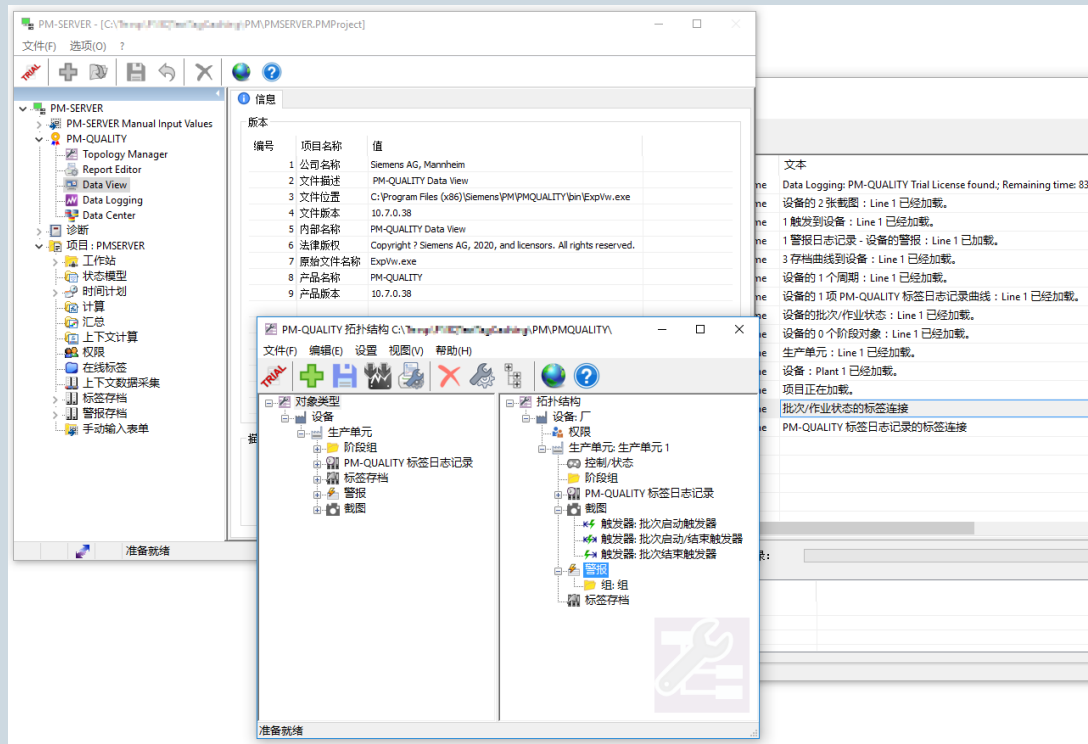
Operating system versions

Support of the following operation system versions:

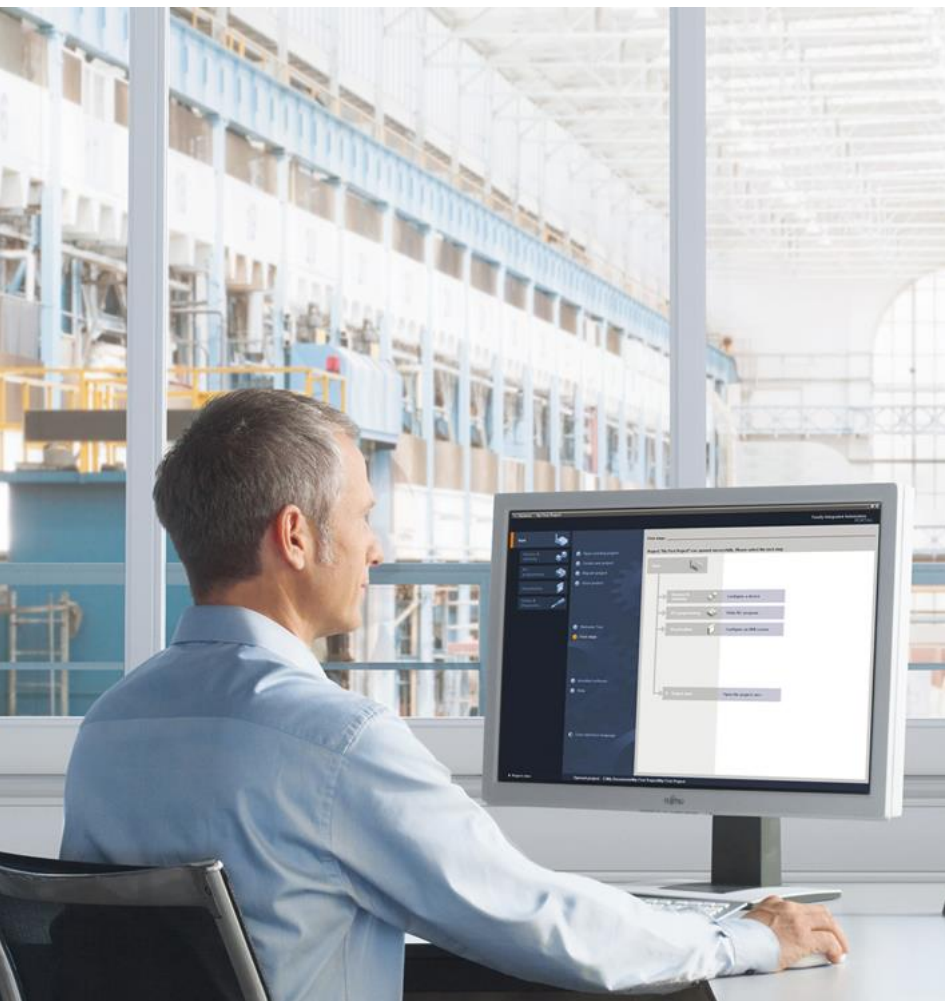
- Windows 7 Professional, Enterprise, Ultimate ^{32-/64-Bit}
- Windows 8.1 Professional, Enterprise ^{32-/64-Bit}
- Windows 10 Professional, Enterprise ^{64-Bit}
- Windows Server 2008 R2 ^{64-Bit}
- Windows Server 2012 R2 ^{64-Bit}
- Windows Server 2016 ^{64-Bit}
- **Windows Server 2019** ^{64-Bit}

New in Version 10.7 User Interface in Chinese

The User Interface is completely translated into Chinese.



Contact



For further information, please visit us at:

Internet:

<http://www.siemens.de/process-management>

Email: winccaddon.automation@siemens.com

Fon: +49 621 1723 1010