

WinCC® PROFIBUS-Diagnostic package for SIMATIC S7 and WinCC

A package is available for Profibus diagnosis that consists of the following components:

- **S7 diagnostic block FB125 and FB126** for the analysis and supply of the diagnostic information of a PROFIBUS DP system.
- **WinCC diagnostic pictures** for the display of the diagnostic information on the visualization system. The diagnostic pictures access the information of the S7 diagnostic block and bring them to the display.

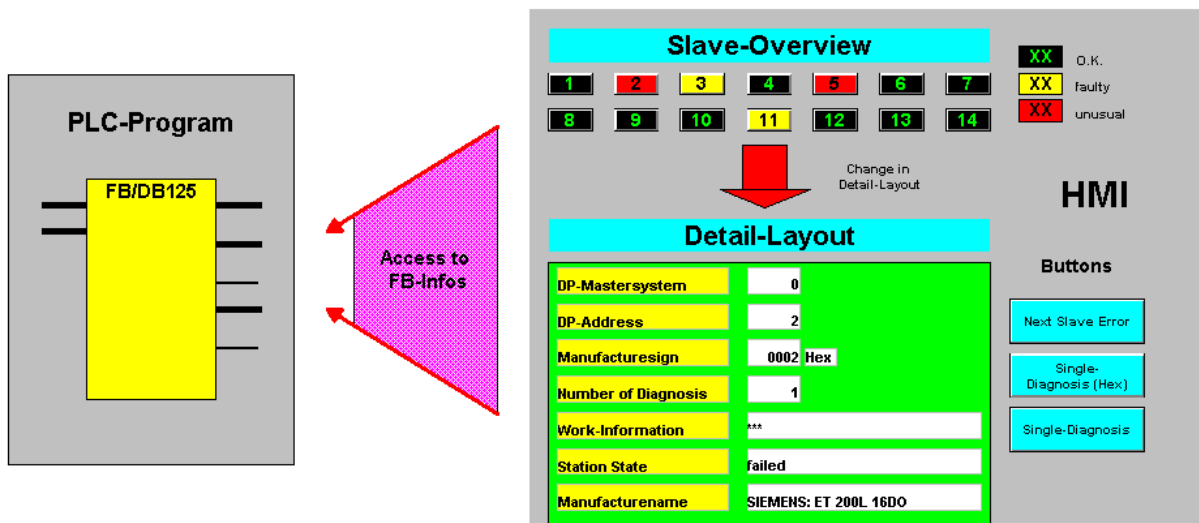


Figure 1: Principle of functioning of the diagnostic package

1. Diagnostic block FB125

The FB125 is a interrupt-driven function for detection of failed and faulty DP slaves. In the case of faulty slaves, detailed diagnostics information concerning the cause of the fault is displayed (slot or module number, module status, channel number, channel fault). The diagnostics information of any DP slaves can be read and interpreted via individual diagnostics. Overview diagnostics give information on configured, existing, failed and faulty DP slaves. The FB125 diagnostic block also offers information of subordinate ASI bus systems, when a DP/ASI-Link is used as a DP slave. All interrupts are delayed during execution of the FB.

The specification and meaning of the parameters of the S7 diagnostic block are to be found in the separate documentation to the FB125 (DP_Diag41).

1.1 Application area of FB125

FB125 can be used in the following integral and external DP interfaces:

- ▶ CPU 315-2 DP (from 6ES7 315-2AF02-0AB0)
- ▶ CPU 315-2 DP (only 6ES7 315-2AF01-0AB0):
 - FB125 without detection of faulty slaves by Start/RESET
- ▶ CPU 316-2 DP
- ▶ CPU 318-2 DP
- ▶ C7-626 DP (from 6ES7 626-2AG01-0AE3)
- ▶ C7-633 DP and C7-634 DP
- ▶ SINUMERIK 840D with integrated CPU315-2 DP (6ES7 315-2AF01-0AB0):
 - FB125 without detection of faulty slaves by Start/RESET
- ▶ SINUMERIK 840DI with integrated CPU315-2 DP (6ES7 315-2AF03-0AB0)
- ▶ CPU 41x-2/3/4 DP
- ▶ CP 443-5
- ▶ IM 467 and IM 467 FO
- ▶ WIN AC
- ▶ WIN LC
- ▶ **Not** for CP 342-5

1.2 Calling the FB125 in the S7 user program

The DP diagnostic block is called via the following statement in the user program:

CALL FB125, DBxy (xy represents any instance data block number)

The parameter list then appears automatically with the formal operands which should not be parameterized. The controlling of the building block function is made by the WinCC diagnostic pictures.

OB1 / OB82 / OB86

```
CALL FB125, DB125
DP_MASTERSYSTEM      :=
EXTERNAL_DP_INTERFACE :=
MANUAL_MODE          :=
SINGLE_STEP_SLAVE     :=
SINGLE_STEP_ERROR     :=
RESET                :=
SINGLE_DIAG           :=
SINGLE_DIAG_ADR       :=
ALL_DP_SLAVES_OK     :=
SUM_SLAVES_DIAG      :=
SLAVE_ADR            :=
SLAVE_STATE          :=
SLAVE_IDENT_NO       :=
ERROR_NO             :=
ERROR_TYPE           :=
MODULE_NO            :=
MODULE_STATE         :=
CHANNEL_NO           :=
CHANNEL_TYPE         :=
CHANNEL_ERROR_CODE   :=
CHANNEL_ERROR_INFO_1 :=
CHANNEL_ERROR_INFO_2 :=
DIAG_COUNTER         :=
DIAG_OVERFLOW        :=
BUSY                 :=
```

Picture 2: Call of FB125

This call (including the same instance data block number and the same user actual operand) must be made in the three execution levels **OB1**, **OB82** and **OB86**. A nested FB125 call in the three execution levels is possible (e.g.: OB82 → FC120 → FB125). The order and the contents of the 20 bytes of temporary local data of the organization blocks OB1, OB82 and OB86 must not be changed but can be extended at any time.

The following SFCs are used internally in the FB125: SFC13 and SFC51 with SZL 0C91 (in the case of an internal DP interface to the master CPU) or SZL 4C91 (in the case of an external DP interface to the CP/IM). It is **not** permissible to call SFC13 and/or SFC51 with SZL 0C91/4C91 in OB1 in addition to the FB125 call.

Evaluation of the information at the block output parameters only makes sense in the cyclic program section (OB1).

The block FB125 will be processed orderly, if the BIE-Bit is set as "1". And The BIE-Bit will be removed, if the processing of FB125 was error.

1.3 Technical specifications of FB125

Runtime without pending diagnostics message: depend on the DP master
e.g. CPU 315-2 DP as DP master:
approx. 4ms

Runtime with pending diagnostics message: depend on the DP master and the slave diagnostics length
e.g. CPU 315-2 DP as DP master:
approx. 11ms

Memory used in the CPU: 5,8 Kbytes

2. S7-user block FB126

In user block FB126, the system calls diagnostic block FB 125. FB126 manages the FB125 input parameters that are to be controlled. FB126 does not itself have any parameters. It must be called on sequence levels **OB1, OB82 and OB86**:

CALL FB126, DB126

3. Integration the blocks in the S7 user project

The S7 blocks FB125 and FB126 are offered in an archived STEP7 project. Double-clicking allows you to unpack the project to any folder you like:

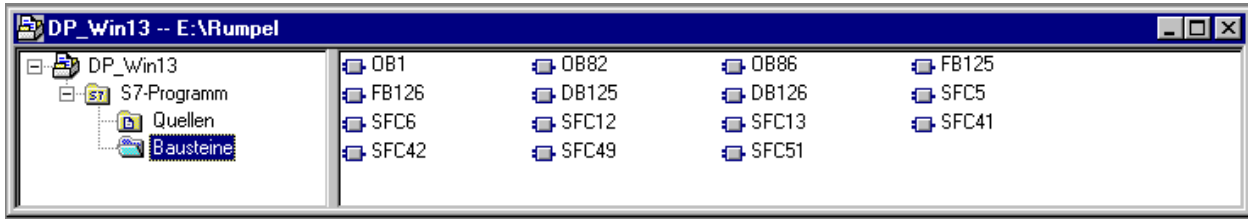


Figure 2: S7 project after unpacking

The unpacked S7 project contains all the necessary S7 blocks including the organization blocks (OB1, OB82, OB86) and the calls of diagnostic blocks FB125 and FB126.

Simply Copy and Paste to place the S7 blocks from the STEP7 project in the respective user project.

FB126 must be called via "Call FB126, DB126" in organization blocks OB1, OB82 and OB86. In FB126, the system must implicitly call FB 125.

4. The WinCC sample project

The SIMATIC S7 project and WinCC project are integrated in the download (DP_WIN13.exe). After unpacking, the data storage has the following structure:

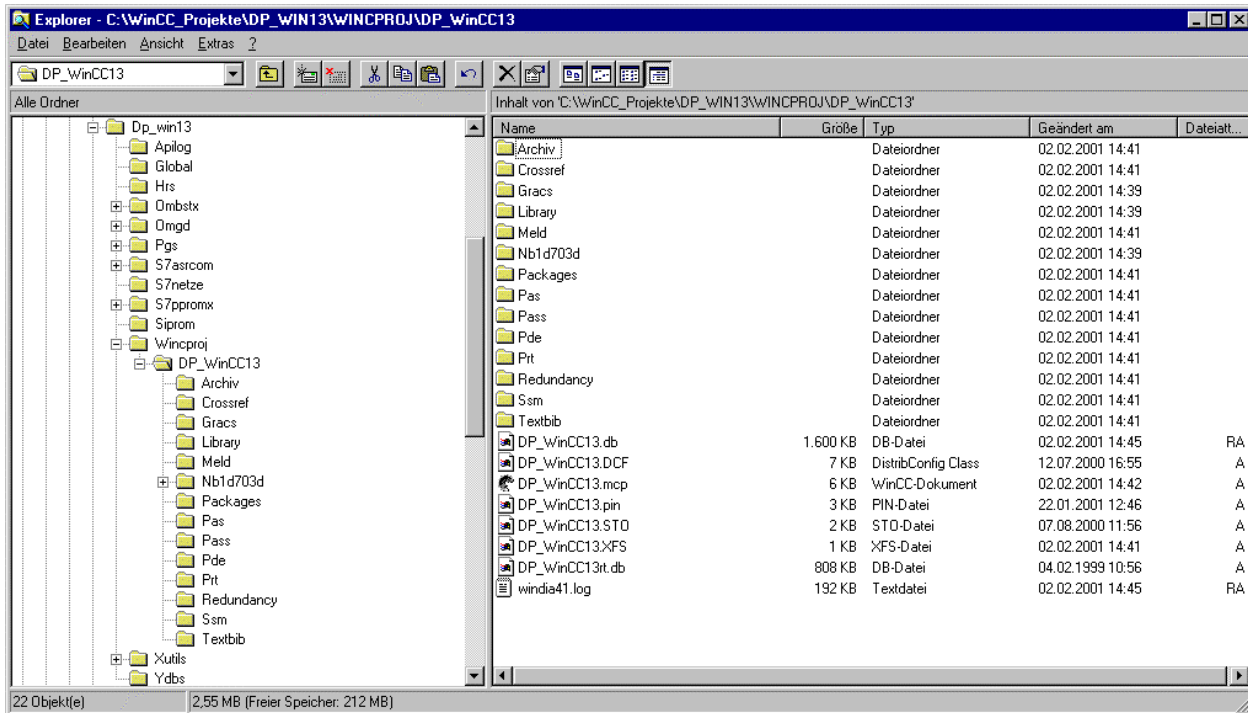


Figure 4: Unpacked sample project

The WinCC project is in folder **DP_Win13/Wincproj/DP_WinCC13**.

4.1 Used tags

To be able to use all the functions of the Profibus diagnostic package, you need 119 process tags. The description of the tags is as follows:

Name	Bedeutung	Steuerungs-Zugriff
Address_In	Slave address input	DB125.DBB3
Address_Out	Slave address output	DB125.DBB6
Asi0_7	ASI-Slaves	DB125.DBB18
Asi8_15	ASI-Slaves	DB125.DBB19
Asi16_23	ASI-Slaves	DB125.DBB20
Asi24_31	ASI-Slaves	DB125.DBB21
Cfg_Error	Configuration error	DB125.DBX932.2
Channel_No	Channel number	DB125.DBB14
Channel_Typ	Channel type section	DB125.DBB15
Count_Diag	Number of diagnoses per slave	DB125.DBB26
Count_Slaves	Number of affected slaves	DB125.DBB5
Diag_Dat_B1	Slave diagnostic data	DB125.DBB932
Diag_Dat_B2		DB125.DBB933
Diag_Dat_B3		DB125.DBB934
Diag_Dat_B4		DB125.DBB935
Diag_Dat_D1		DB125.DBD938
Diag_Dat_D2		DB125.DBD942
Diag_Dat_D3		DB125.DBD946
Diag_Dat_D4		DB125.DBD950
Diag_Dat_D5		DB125.DBD954
Diag_Dat_D6		DB125.DBD958
Diag_Dat_D7		DB125.DBD962
Diag_Dat_D8		DB125.DBD966
Diag_Dat_D9		DB125.DBD970
Diag_Dat_D10		DB125.DBD974
Diag_Dat_D10_1		DB125.DBD978
Diag_Dat_D10_2		DB125.DBD982
to		
Diag_Dat_D10_49		DB125.DBD1170
Diag_Dat_D10_50		DB125.DBW1174
Diag_Dat_W5		DB125.DBW936
Diag_Deactivated	Slave deactivated	DB125.DBX933.7
Diag_Ext_Diag	Slave-specific diagnostic data	DB125.DBX932.3
Diag_Freeze_Mode	Freeze mode	DB125.DBX933.4
Diag_Invalid_Slave_Respond	Invalid slave response	DB125.DBX932.5
Diag_Master_Lock	Slave parameterized by another master	DB125.DBX932.7

Name	Bedeutung	Steuerungs-Zugriff
Diag_Non_Exist	Slave cannot be reached	DB125.DBX932.0
Diag_Stat_Diag	Static diagnosis	DB125.DBX933.1
Diag_Station_Not_Ready	Slave not ready for data exchange	DB125.DBX932.1
Diag_Sync_Mode	Sync mode	DB125.DBX933.5
Diag_WD_On	Control monitoring activated	DB125.DBX933.3
DP_Interface	DP interface type	DB125.DBX2.0
DP_Master	DP master system	DB125.DBW0
Effectuated_Stored_1	Pending and pended disturbances	DB125.DBD1256
Effectuated_Stored_2		DB125.DBD1260
Effectuated_Stored_3		DB125.DBD1264
Effectuated_Stored_4		DB125.DBD1268
Error_Code	Error code	DB125.DBW16
Error_No	Error number	DB125.DBB10
Error_Type	Error type	DB125.DBB11
Existing_1	Existing slaves	DB125.DBD1192
Existing_2		DB125.DBD1196
Existing_3		DB125.DBD1200
Existing_4		DB125.DBD1204
Failed_1	Failed slaves	DB125.DBD1208
Failed_2		DB125.DBD1212
Failed_3		DB125.DBD1216
Failed_4		DB125.DBD1220
Faulty_1	Disturbed slaves	DB125.DBD1224
Faulty_2		DB125.DBD1228
Faulty_3		DB125.DBD1232
Faulty_4		DB125.DBD1236
Global_Info	Global info	DB125.DBX4.0
Hand_Auto	Manual/automatic operation	DB125.DBX2.1
Module_No	Module number	DB125.DBB12
Module_State	Module status	DB125.DBB13
Next_Error	Switch to next error on the slave	DB125.DBX2.3
Next_Slave	Switch to the next affected slave	DB125.DBX2.2
Prm_Error	Parameterization error	DB125.DBX932.6
Reset	Reset evaluation, apply inputs	DB125.DBX2.4
Single_Diag	Activate single diagnosis	DB125.DBX2.5
Slave_Ident	Manufacturer identifier	DB125.DBW8
Status	Slave status	DB125.DBB7
Support_Error	Slave does not support function	DB125.DBX932.4

4.2 WinCC-Diagnostic pictures

PROFIBUS diagnostic pictures are made available for SIEMENS's WinCC visualization system. The tags of the pictures are assigned to data of the FB125 instance data block.

The pictures were created using **WinCC V5.0 + Service Pack 1.**

Name	Meaning
Start	Start picture
Overview	Overview diagnosis
DetailDiag_d (German) or DetailDiag_e (English)	Detailed diagnosis
DetailDiag_hex_d (German) or DetailDiag_hex_e (English)	Detailed diagnosis with output of information in hex code.

4.2.1 Picture „Overview“

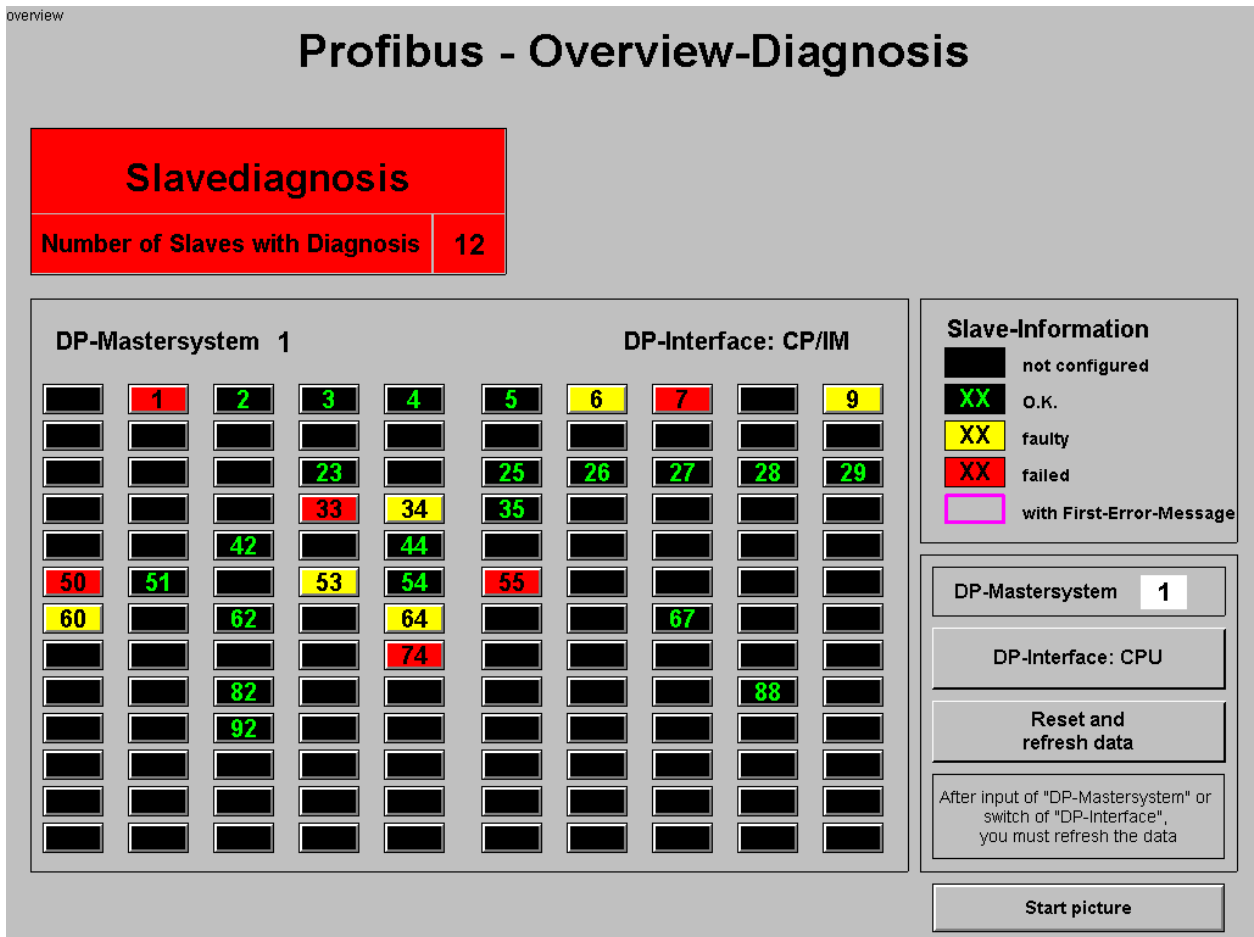


Figure 5: Overview diagnosis

Slavediagnosis

Number of Slaves with Diagnosis 12

Overview message whether all Slaves operates trouble free.
Number of Slaves with diagnosis.

DP-Mastersystem: 1

Specification of the DP master system to be diagnosed.

DP-Interface: CP/IM

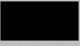



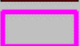
Specification of the DP interface type. If the master's DP interface in question is an integrated one (CPU) or a plug-in DP interface (CP/IM). Clicking on the pushbutton switches between the two interface types.

Reset and
refresh data

Applies the specified number of the DP master system and the DP interface type. The system then initializes DP evaluation and restarts it. The system reacquires the entire DP master system, i.e. it determines automatically in an initialization routine all the configured, available, failed and disturbed DP slaves.

7

In the overview diagnosis, a pushbutton represents all the slaves of the specified master system. Each slave's status is visualized by the pushbuttons color codes.

Slave-Information	
	not configured
	O.K.
	faulty
	failed
	with First-Error-Message

When you click on the colored pushbutton to choose a slave, the system switches to the diagnostics detailed picture.

4.2.2 Picture „DetailDiag_e“

DetailDiag_e

Profibus Single-Diagnosis

Station-Diagnosis			
DP-Mastersystem	1		
DP-Address	7	Station status	faulty
Vendor ID	801D Hex	Vendor name	SIEMENS: ET200M (IM153-1)
Diagnostic counter	3		
Location designation	***		

Error number	2		
Module-Diagnosis			
Module number	4		
Channel-Diagnosis			
Channel number	3	Channel type	Analog-Output
Channel error	M short-circuit		

Refresh Diagnosis Next Slave Error Single-Diagnosis (Hex) Back to Overview

Figure 10: Detailed diagnosis

In the diagnostic detailed picture, the system displays in plain text all the diagnostic information of the slave.

Vendor ID

The system displays in hex format the manufacturer identifier that is assigned to the slave. In our example, this is the 801D (an ET200M).

Vendor Name

Based on the identifier, the system displays here the device designation. The manufacturer designation is a text list object. If you have hex codes from third-party manufacturers or from new Siemens devices, convert them to a decimal number and add the new designation to the text list object.

 **Location Information**

In this text list object, you can enter the information of your plant configuration. For example, the ET 200 shown above is in "Machine room 3.FI. 5.1".

 **Module diagnosis**

Displays information on errors in the module.

 **Channel diagnosis**

Displays information on errors in the channel.



Refresh Diagnosis

The system updates the diagnostic data of the displayed slave. After eliminating a disturbance click on this pushbutton.



Next Slave Error

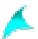
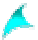
If several errors are pending on a slave, clicking on this pushbutton switches between the individual errors. You differentiate between the errors by means of the error number field.



Single-Diagnosis (Hex)

Clicking on this pushbutton chooses another diagnostics detailed picture that displays further diagnostics information on the slave in hex format.

4.3 Integrating the pictures in the WinCC user project

- 
- Copy the diagnostic pictures from the sample project (folder GraCS) to the GraCS folder of your user project.
-
- 
- Copy the tags from the sample project into your project to the existing tags:
- Using the VAR_EXIM.EXE tool on WinCC CD for exporting/importing tags
 - or by simply dragging and dropping: Open the sample project → Highlight all the tags → Right click and choose Copy in the context menu to copy all the tags → Close the sample project → Open your project and paste the tags in your WinCC controller connection.

4.4 What must I do observe with German/English language switching!

In our Profibus example, we created different (diagnostic detailed) pictures for English and German. This is due to the use of text list objects.

With list objects, you can activate or deactivate Language Switching in the Miscellaneous property. With "Yes", the system stores the texts in the text library and with "No" in the picture. To retain the assigned texts in the picture, we deactivated language switching on the list objects in the sample project, i.e. the texts are stored in the picture.