

SIEMENS

SIMATIC HMI

WinCC flexible 2008 SP2 Update 13

Readme

<u>Validity</u>	1
<u>General information</u>	2
<u>Solved problems</u>	3
<u>Installation</u>	4

Legal information

Warning notice system

This manual contains notices you have to observe in order to ensure your personal safety, as well as to prevent damage to property. The notices referring to your personal safety are highlighted in the manual by a safety alert symbol, notices referring only to property damage have no safety alert symbol. These notices shown below are graded according to the degree of danger.

 DANGER

indicates that death or severe personal injury will result if proper precautions are not taken.
--

 WARNING
--

indicates that death or severe personal injury may result if proper precautions are not taken.

 CAUTION
--

with a safety alert symbol, indicates that minor personal injury can result if proper precautions are not taken.
--

CAUTION

without a safety alert symbol, indicates that property damage can result if proper precautions are not taken.

NOTICE

indicates that an unintended result or situation can occur if the corresponding information is not taken into account.
--

If more than one degree of danger is present, the warning notice representing the highest degree of danger will be used. A notice warning of injury to persons with a safety alert symbol may also include a warning relating to property damage.

Qualified Personnel

The product/system described in this documentation may be operated only by **personnel qualified** for the specific task in accordance with the relevant documentation for the specific task, in particular its warning notices and safety instructions. Qualified personnel are those who, based on their training and experience, are capable of identifying risks and avoiding potential hazards when working with these products/systems.

Proper use of Siemens products

Note the following:

 WARNING
--

Siemens products may only be used for the applications described in the catalog and in the relevant technical documentation. If products and components from other manufacturers are used, these must be recommended or approved by Siemens. Proper transport, storage, installation, assembly, commissioning, operation and maintenance are required to ensure that the products operate safely and without any problems. The permissible ambient conditions must be adhered to. The information in the relevant documentation must be observed.

Trademarks

All names identified by ® are registered trademarks of the Siemens AG. The remaining trademarks in this publication may be trademarks whose use by third parties for their own purposes could violate the rights of the owner.

Disclaimer of Liability

We have reviewed the contents of this publication to ensure consistency with the hardware and software described. Since variance cannot be precluded entirely, we cannot guarantee full consistency. However, the information in this publication is reviewed regularly and any necessary corrections are included in subsequent editions.

Table of contents

1	Validity	5
2	General information	7
3	Solved problems	9
3.1	Solved problems in Update 13.....	9
3.2	Solved problems in Update 12.....	10
3.3	Solved problems in Update 10.....	11
3.4	Solved problems in Update 3.....	17
3.5	Solved problems in Update 2.....	18
3.6	Solved problems in Update 1.....	20
4	Installation	21

Validity

Validity

This update is valid for the following WinCC flexible 2008 SP2 editions:

- WinCC flexible 2008 SP2 Compact / Standard / Advanced
- WinCC flexible 2008 SP2 Micro
- WinCC flexible 2008 SP2 ASIA
- WinCC flexible 2008 SP2 China
- WinCC flexible 2008 SP2 Runtime

Installation

To install the update, please follow the instructions in the chapter "Installation".

General information

Configuration information for ProAgent

Exclusion operands have to first in line in the transition of S7-Graph.

Only one exclusion operand is permitted per transition branch.

S7-GRAPH termination operands are not supported in ProAgent.

Solved problems

3.1 Solved problems in Update 13

This update corrects the following problems:

- If you use direct keys, it may occur that no bits are set when you simultaneously press Ctrl, Shift, Alt or the Fn key.

Devices affected:

- OP 277 6"

- Incorrect time specifications in the daylight saving time option

If you have activated the daylight saving time option "daylight saving time currently in effect" in the date and time settings, incorrect time specifications could be given for some time zones in archives, for example.

Devices affected:

- TP 177B 4"
- MP 177
- MP 277
- Mobile 277 PN/DP
- Mobile 277 IWLAN V1
- Mobile 277 F IWLAN V1
- MP377

- In runtime, if you end the function "stop runtime" with "runtime and operating system" mode, it may happen that only runtime is exited.

Devices affected:

- PC Runtime
- Panel PC

- If you use graphics when printing reports, it can happen that the graphics are not printed.

Devices affected:

- OP 77B

3.2 Solved problems in Update 12

This update rectifies the following problems in runtime and optimizes configuration scenarios:

- Very sporadic interruption during start-up procedure of Basic Panel
Increased frequency of switching Basic Panel on and off may very sporadically cause an invalid alarm message to be stored in the retentive message buffer of the panel at the time of switch-off.
During a subsequent Runtime start, it is possible that the HMI device could interrupt the start-up procedure and display a white screen.
Affected HMI devices:
 - KTP400 Basic
 - KTP600 Basic
 - KTP1000 Basic
 - TP1500 Basic
- Problems with communication for Basic Panels with PROFIBUS DP slaves
The following problems occur in the communication between Basic Panels with PROFIBUS DP Slaves due to the number of transmitted PDUs:
 - Loss of message frames during a connection
 - Connection breaksAffected HMI devices:
 - KTP600 Basic DP
 - KTP1000 Basic DP
- Long start phase of SIMOTION SCOUT
If you have installed WinCC flexible V1.3 SP2 after the installation of SIMOTION SCOUT, it takes a long time to start SIMOTION SCOUT.
- Error closing SIMATIC applications.
If you add HMI devices to an S7 project for some S7-applications, the following dialog can be displayed when closing these applications:
".NetBroadcastEventWindow..."
Affected S7 applications:
 - SIMATIC Manager
 - NetPro
 - HW Config
- Problems archiving SIMOTION SCOUT projects
Projects can no longer be archived in SIMOTION SCOUT.

3.3 Solved problems in Update 10

This update rectifies the following problems in runtime and optimizes configuration scenarios:

- In the recipe display, the dialog "Save As" is displayed outside of the middle of the screen.
- Error message after right-clicking on a multiple selection
You select multiple objects in a screen and position the mouse cursor precisely on the selection frames. The cursor changes its appearance. When you right-click, WinCC flexible closes unexpectedly.
- Alarm windows with missing buttons
When you configure a template in an alarm window with a window title, the alarm window is displayed several pixels smaller during runtime.
Under certain circumstances the buttons in the alarm window are not correctly displayed as a result.
- Missing window titles in the logon dialog
When you use "Chinese" as the runtime language, the logon dialog title is not displayed.
- Incorrect graphics preview
When you use "Chinese" as the user interface language, sporadically, the graphics are incorrectly displayed in the preview.
- Connection abort when a button is pressed in KTP1000 Basic DP
You may experience a connection abort if you keep a button on a KTP1000 Basic DP pressed for several seconds.
- 3D frame is always displayed
The frame may be displayed even if you have disabled the property "Appearance > 3D frame" for buttons.
Devices affected:
 - OP 77B
 - TP 170A
 - TP 170micro
- Different response for energy-saving options
It may not be possible to put the screen into energy-saving mode after you have started WinCC flexible runtime.

- Printing reports from segmented circular logs in the storage location "File - RDB"
Not all the relevant alarms may be printed when you print reports with area selection from segmented circular logs.
Devices affected:
 - TP 277
 - OP 277
 - MP 277
 - MP 377
 - Mobile Panel 277
 - WinCC flexible Runtime
- Printing the screen displayed (hardcopy) and reports
The MP 377 HMI device may stop responding if you print from it in landscape format.
- Problems when incorporating symbols from symbol libraries
The HMI device may stop responding if you use symbols from symbol libraries.
Devices affected:
 - OP 77B
 - TP 170
 - OP 270
 - TP 270
 - MP 270
 - MP 370
 - TP 177B
 - OP 177B
 - MP 177
 - TP 277
 - OP 277
 - MP 277
 - MP 377
 - Mobile Panel 177
 - Mobile Panel 277
 - WinCC flexible Runtime

- Illegible log-on dialog

The log-on dialog for entering user and password is hard to read.

Devices affected:

- OP 77B
- TP 170A
- TP 170micro
- OP 270
- TP 270
- MP 270
- MP 370
- TP 177B
- OP 177B
- MP 177
- TP 277
- OP 277
- MP 277
- MP 377
- Mobile Panel 177
- Mobile Panel 277
- WinCC flexible Runtime

- Screen saver problems

The start menu can be opened when you carry out certain actions whilst the screen saver is active despite the fact that task switching is enabled.

Devices affected:

- TP 177B 4'
- MP 177
- MP 277
- MP 377
- Mobile Panel 277
- Mobile Panel 277 IWLAN
- Mobile Panel 277F IWLAN

- Incorrect IO field response

You are using an IO field in "Input" mode in a screen. You select the IO field in runtime which already contains a text. New text then input is added to the existing text instead of replacing it.

Devices affected:

- OP 77B
- TP 170
- OP 270
- TP 270
- MP 270
- MP 370
- TP 177B
- OP 177B
- MP 177
- TP 277
- OP 277
- MP 277
- MP 377
- Mobile Panel 177
- Mobile Panel 277
- Mobile Panel 277 IWLAN
- Mobile Panel 277F IWLAN
- WinCC flexible Runtime

- When you use discrete alarms whose tag is addressed via an array, the event "Outgoing" for this alarm cannot be correctly identified. The alarm continues to be displayed.

Devices affected:

- KTP400 Basic
- KTP600 Basic
- KTP1000 Basic
- TP1500 Basic

- Problems with the Sm@rtClient view

If you have configured a Sm@rtClient view in multiple screens, runtime may go into standstill when you toggle between these screens.

Devices affected:

- OP 270
- TP 270
- MP 270
- MP 370
- TP 177B
- OP 177B
- MP 177
- TP 277
- OP 277
- MP 277
- MP 377
- Mobile Panel 177
- Mobile Panel 277
- Mobile Panel 277 IWLAN
- Mobile Panel 277F IWLAN
- WinCC flexible Runtime

- On the MP 377 it is possible that memory cards are recognized after a long delay or not at all.

- Project transfer with RS232/PPI multi-master cable

Sporadic connection aborts occur during project transfer.

Devices affected:

- OP73
 - OP73 micro
 - OP 77A
 - TP 177A
 - TP 177 micro
 - KTP 178
 - KTP 600 Basic DP
 - KTP 1000 Basic DP
 - Smart 700
 - Smart 1000
- Warnings when you generate a project with alarm views

Rectifying a calculation error can result in "invalid positioning" warnings when you generate a project. The warnings are output if you use alarm views of the "Alarm line" view type or in "Auto-size" mode in a project.

Remedy:

Correct the alarm views in question by changing the position and if necessary the size.

For the "Alarm line" view type, you can alternatively change the font size. The size of the alarm view in "Auto-size" mode depends on the selected font.

3.4 Solved problems in Update 3

This update rectifies the following problems in runtime and optimizes configuration scenarios:

- Pressed key on the touch screen

If you press a button on the touch screen, it may stay occasionally stay pressed even if you do not press it any longer.

Device affected:

- KTP1000 Basic

- ESC key with configured system function

If you have configured a system function to the "Release" event of the ESC key, then this system function will be executed immediately when you press the ESC key instead of when you release it.

Devices affected:

- OP 73,
- OP 73 micro
- OP 77A

- MAC address in the network

Some HMI devices in the network do not only send packages with their MAC address but also packages with the MAC address 00-01-00-00-00-00.

Devices affected:

- KTP400 Basic mono PN,
- KTP600 Basic PN

3.5 Solved problems in Update 2

This update rectifies the following problems in the Engineering System and optimizes configuration scenarios:

- **Exiting WinCC flexible**
If you disable the representation "Square representation" for the pointer instrument and change either the height or the width, you may exit WinCC flexible.
- **Incorrect display of graphical elements**
The system function "NotifyUserAction" will be configured to a button in a regulated project. If you disable the option "Regulated project", then the button will no longer be visible in Runtime.
- **Incorrect display of the printed project documentation**
You may experience an incorrect display of screen objects when you print the project documentation.
- **You cannot select a background graphic or graphic for the dial in the "Pointer instrument" operator control.**
- **Error message in the "Screens" editor**
Several lines or polylines are configured in a screen. If the starting points of the display objects are identical and if at least one of the display objects has received an arrow as "Line start", then an error message will be issued.
- **A Runtime start is not possible after changing the HMI device type.**
You are using a project with scripts. When you change the HMI device type, select an HMI device that does not support scripts. You can compile the project but a Runtime start is not possible.

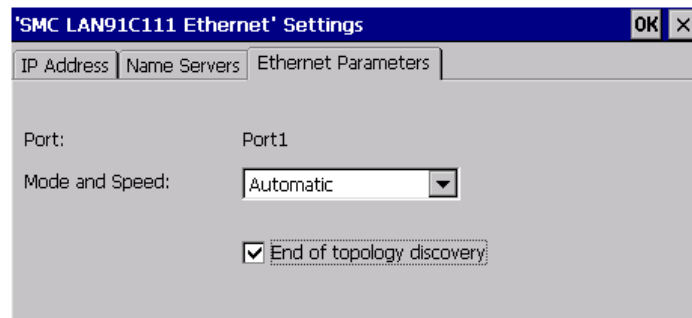
This update rectifies the following problems in runtime and optimizes configuration scenarios:

- Error messages of network modules by using topology detection for Profinet

The integrated network topology detection of HMI Panels may result in error messages of the connected switches, for example, duplicate MAC address.

Enable the option End of topology discovery so that no LLDP frames will be sent at the respective port.

The "End of topology discovery" option can affect the functionality of net protocols such as Profinet IO and SNMP. Enable this option only if you do not need network topology detection or are not using Profinet IO.



3.6 Solved problems in Update 1

This update rectifies the following problems in the Engineering System and optimizes configuration scenarios:

- **Incorrect display of symbolic I/O fields**
The property "Show selection list" of a symbolic I/O field is activated. The "Input/output" mode is set. The property cannot be deactivated without losing other configured properties at the object.
After conversion to WinCC flexible 2008 SP2, the symbolic I/O fields are displayed with a black frame.
- **Incorrect display of screen objects**
If you move certain screen objects with the arrow keys, and the magnification factor for the zoom is not a multiple of 100%, this will result in incorrect display.
- **Failed project transfer**
If you use graphics with a particular color format in a project, the transfer may fail.

This update rectifies the following problems in runtime and optimizes configuration scenarios:

- **Increasing memory usage when using recipes**
If you configured text lists in recipes, repeated screen changes in screens where recipes are displayed may result in increasing memory usage.
Devices affected:
 - TP 177 B
 - OP 177B
 - MP 177
 - TP 277
 - OP 277
 - MP 277
 - MP 377
 - Mobile Panels 177
 - Mobile Panels 277
 - WinCC flexible Runtime

Installation

Requirements

This update requires one of the following WinCC flexible installations:

- WinCC flexible 2008 SP2 Compact / Standard / Advanced
- WinCC flexible 2008 SP2 Micro
- WinCC flexible 2008 SP2 ASIA
- WinCC flexible 2008 SP2 China
- WinCC flexible 2008 SP2 Runtime

Procedure

Note

Install the update on the Engineering System and Runtime System.

1. Double-click on the "WinCCflexible2008_SP2_upd13.exe" file.
2. Select the "C:\WinCCflexible2008_SP2_UPD13" as the installation folder in the "WinZip Self-Extractor" dialog.
3. Enable "When done unzipping open .\setup.exe" and exit the dialog by clicking "Unzip".

Transferring new images

The update also copies new images to the images folder of the WinCC flexible installation.

By default to: "C:\Program Files\Siemens\SIMATIC WinCC flexible\WinCC flexible Images".

1. Transfer the corresponding latest images to the HMI devices.

