

SIEMENS

Ingenuity for life

Industry Online Support

Home

Moving the Information Server database

Information Server 2014 SP3

<https://support.industry.siemens.com/cs/ww/en/view/66579062>

Siemens
Industry
Online
Support



Legal information

Use of application examples

Application examples illustrate the solution of automation tasks through an interaction of several components in the form of text, graphics and/or software modules. The application examples are a free service by Siemens AG and/or a subsidiary of Siemens AG ("Siemens"). They are non-binding and make no claim to completeness or functionality regarding configuration and equipment. The application examples merely offer help with typical tasks; they do not constitute customer-specific solutions. You yourself are responsible for the proper and safe operation of the products in accordance with applicable regulations and must also check the function of the respective application example and customize it for your system.

Siemens grants you the non-exclusive, non-sublicensable and non-transferable right to have the application examples used by technically trained personnel. Any change to the application examples is your responsibility. Sharing the application examples with third parties or copying the application examples or excerpts thereof is permitted only in combination with your own products. The application examples are not required to undergo the customary tests and quality inspections of a chargeable product; they may have functional and performance defects as well as errors. It is your responsibility to use them in such a manner that any malfunctions that may occur do not result in property damage or injury to persons.

Disclaimer of liability

Siemens shall not assume any liability, for any legal reason whatsoever, including, without limitation, liability for the usability, availability, completeness and freedom from defects of the application examples as well as for related information, configuration and performance data and any damage caused thereby. This shall not apply in cases of mandatory liability, for example under the German Product Liability Act, or in cases of intent, gross negligence, or culpable loss of life, bodily injury or damage to health, non-compliance with a guarantee, fraudulent non-disclosure of a defect, or culpable breach of material contractual obligations. Claims for damages arising from a breach of material contractual obligations shall however be limited to the foreseeable damage typical of the type of agreement, unless liability arises from intent or gross negligence or is based on loss of life, bodily injury or damage to health. The foregoing provisions do not imply any change in the burden of proof to your detriment. You shall indemnify Siemens against existing or future claims of third parties in this connection except where Siemens is mandatorily liable.

By using the application examples you acknowledge that Siemens cannot be held liable for any damage beyond the liability provisions described.

Other information

Siemens reserves the right to make changes to the application examples at any time without notice. In case of discrepancies between the suggestions in the application examples and other Siemens publications such as catalogs, the content of the other documentation shall have precedence.

The Siemens terms of use (<https://support.industry.siemens.com>) shall also apply.

Security information

Siemens provides products and solutions with industrial security functions that support the secure operation of plants, systems, machines and networks.

In order to protect plants, systems, machines and networks against cyber threats, it is necessary to implement – and continuously maintain – a holistic, state-of-the-art industrial security concept. Siemens' products and solutions constitute one element of such a concept.

Customers are responsible for preventing unauthorized access to their plants, systems, machines and networks. Such systems, machines and components should only be connected to an enterprise network or the Internet if and to the extent such a connection is necessary and only when appropriate security measures (e.g. firewalls and/or network segmentation) are in place.

For additional information on industrial security measures that may be implemented, please visit <https://www.siemens.com/industrialsecurity>.

Siemens' products and solutions undergo continuous development to make them more secure. Siemens strongly recommends that product updates are applied as soon as they are available and that the latest product versions are used. Use of product versions that are no longer supported, and failure to apply the latest updates may increase customer's exposure to cyber threats.

To stay informed about product updates, subscribe to the Siemens Industrial Security RSS Feed at: <https://www.siemens.com/industrialsecurity>.

Table of contents

	Legal information	2
1	Introduction	4
2	Procedure	5
	2.1 Creating a backup	5
	2.2 Moving the IS database ("Webframe")	8
3	Appendix	19
	3.1 Service and support	19
	3.2 Links and Literature	20
	3.3 Change documentation	20

1 Introduction

When installing the Information Server (IS) web page, the location for the IS database (webframe) can be specified. Often, however, the default location on the C partition is chosen. If you want to move the IS database later, e.g. due to insufficient space on the partition, the procedure described in this document must be followed.

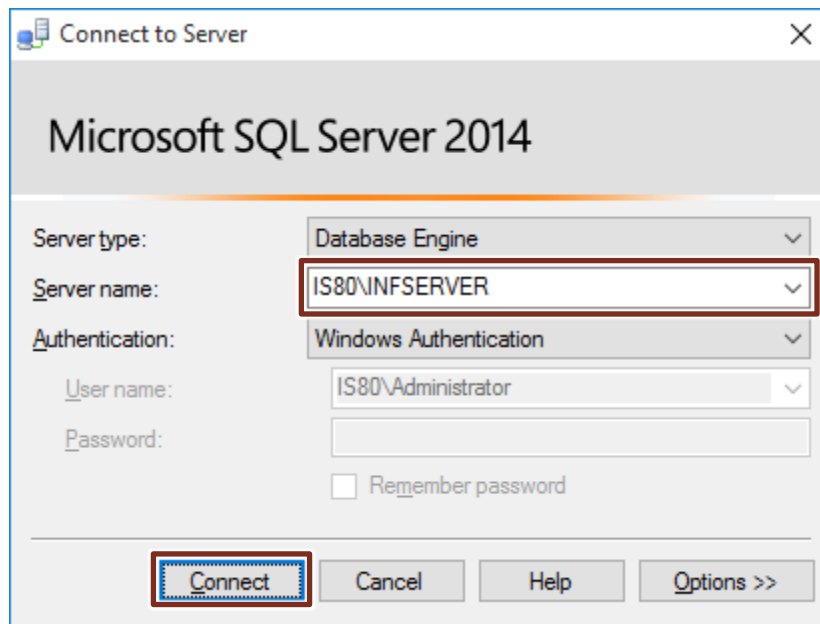
2 Procedure

2.1 Creating a backup

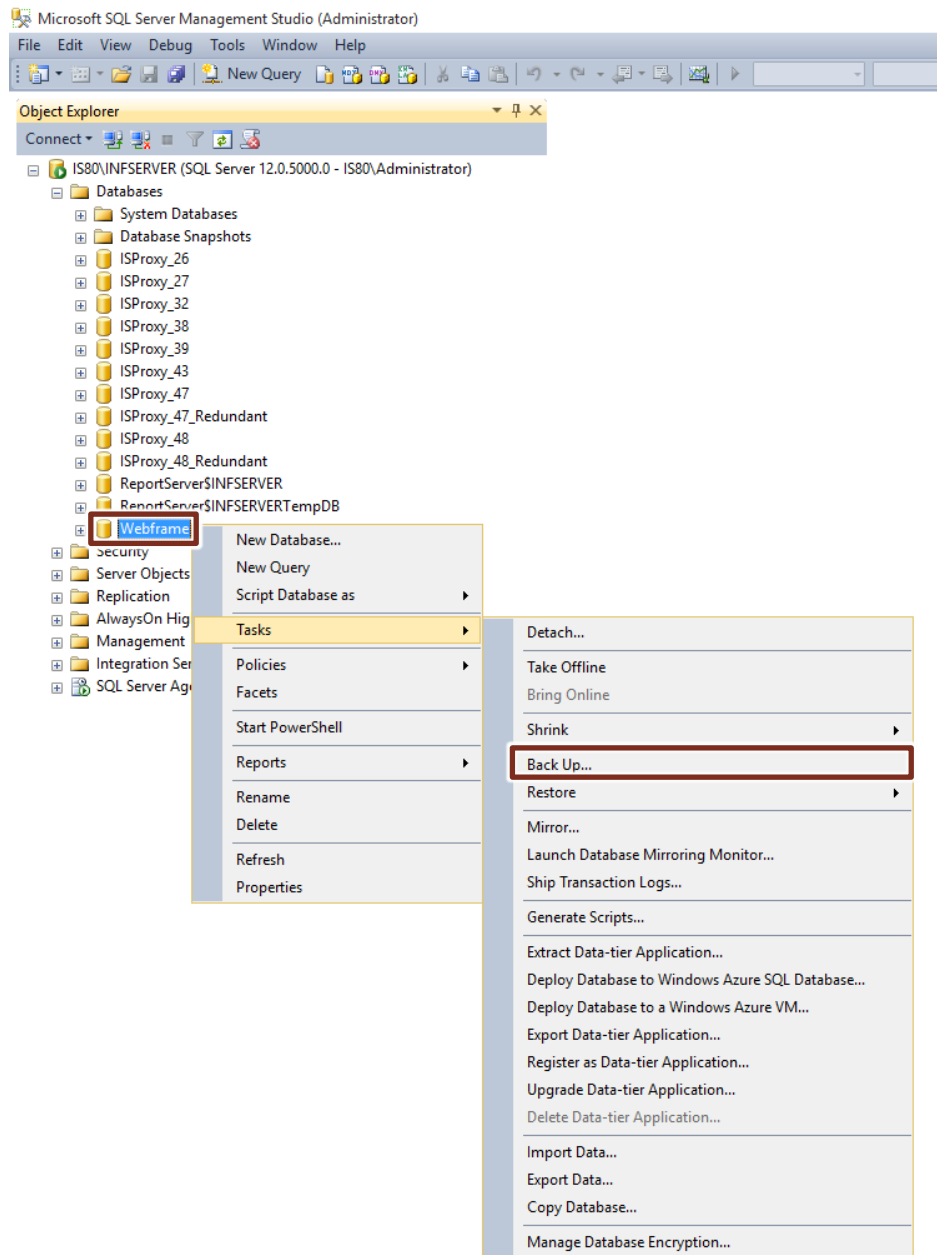
Before moving the IS database, it is recommended to create a backup.

Procedure

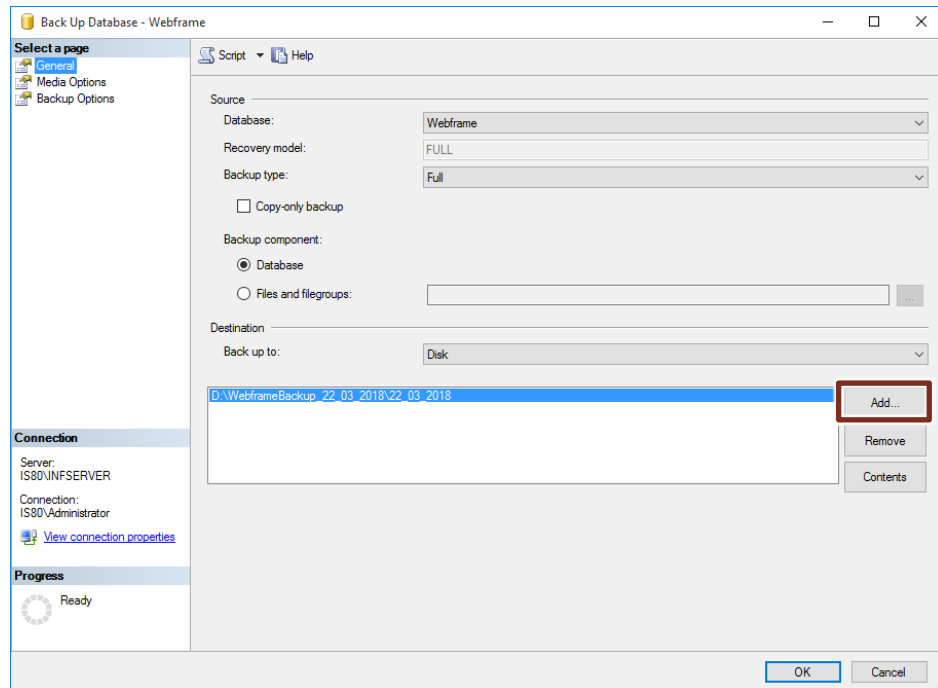
1. Open the Microsoft SQL Server 2014 Management Studio.
2. Connect to the server by selecting "Server name" and then clicking "Connect".
When using a pure IS, the default server name is:
"<computername>\INFSERVER", when using a combined PH/IS
"<computername>\HISTORIAN".



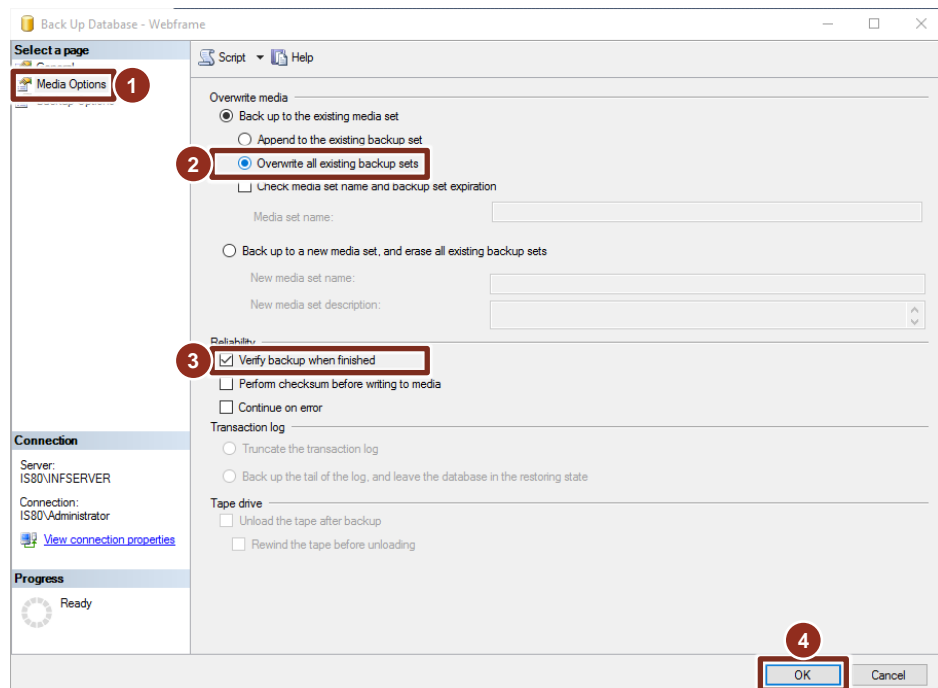
3. In Object Explorer, navigate to the IS database "Databases> Webframe" and select "Tasks> Back Up..." in the context menu.



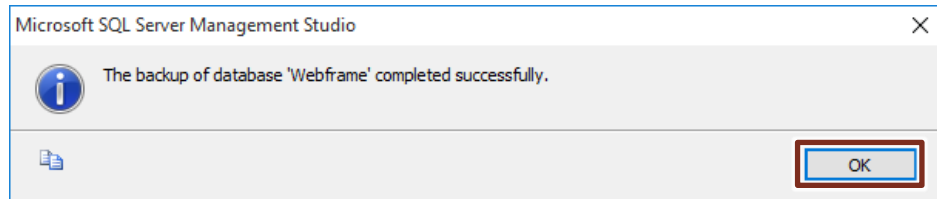
4. In the "Destination" area, select the file path for the backup by clicking "Add ...".



5. Go to the "Media Options" page and select "Overwrite all existing backup sets" and check the box "Verify backup when finished". Acknowledge the dialog with "OK" to start the backup.



- After successfully creating the backup, a message appears, confirm this with "OK".



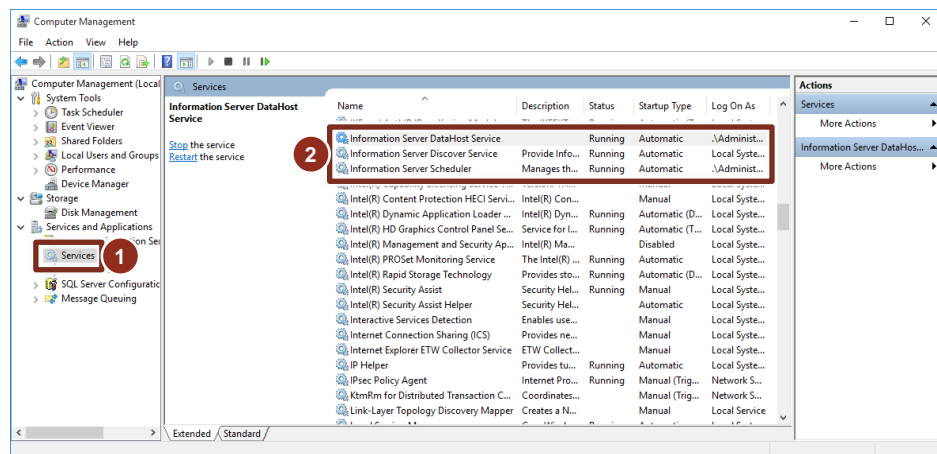
2.2 Moving the IS database ("Webframe")

Moving the IS database ("webframe") requires the following procedure:

- Stop all IS services and applications
- Determine the file path of the IS database ("Webframe")
- Detach database
- Move database
- Attach database
- Restart the PC

Stop all IS services and applications

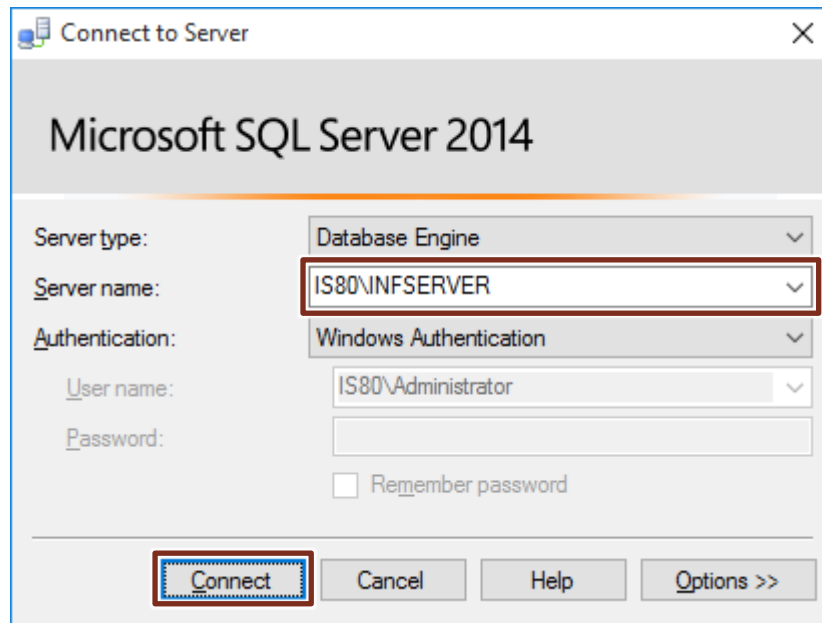
- Open Computer Management and navigate to Services and Applications > Services.
- In each case, terminate the following services via the "Stop" command in the context menu:
 - Information Server DataHost Service
 - Information Server Discover Service
 - Information Server Scheduler



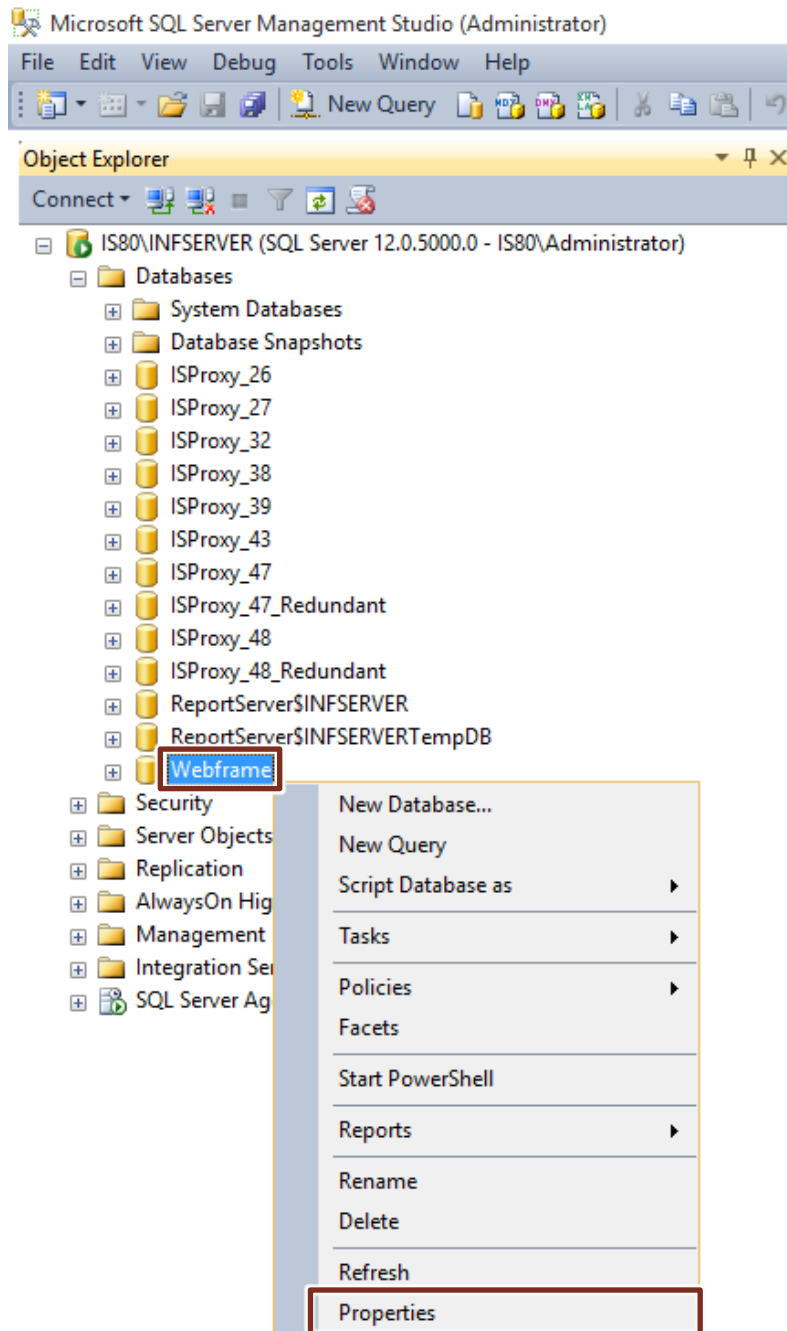
- Close the Computer Management.

Determine the file path of the IS database ("Webframe")

1. Open the Microsoft SQL Server 2014 Management Studio.
2. Connect to the server by selecting "Server name" and then clicking "Connect".
When using a pure IS, the default server name is:
"<computername>\INFSERVER", when using a combined PH/IS
"<computername>\HISTORIAN".



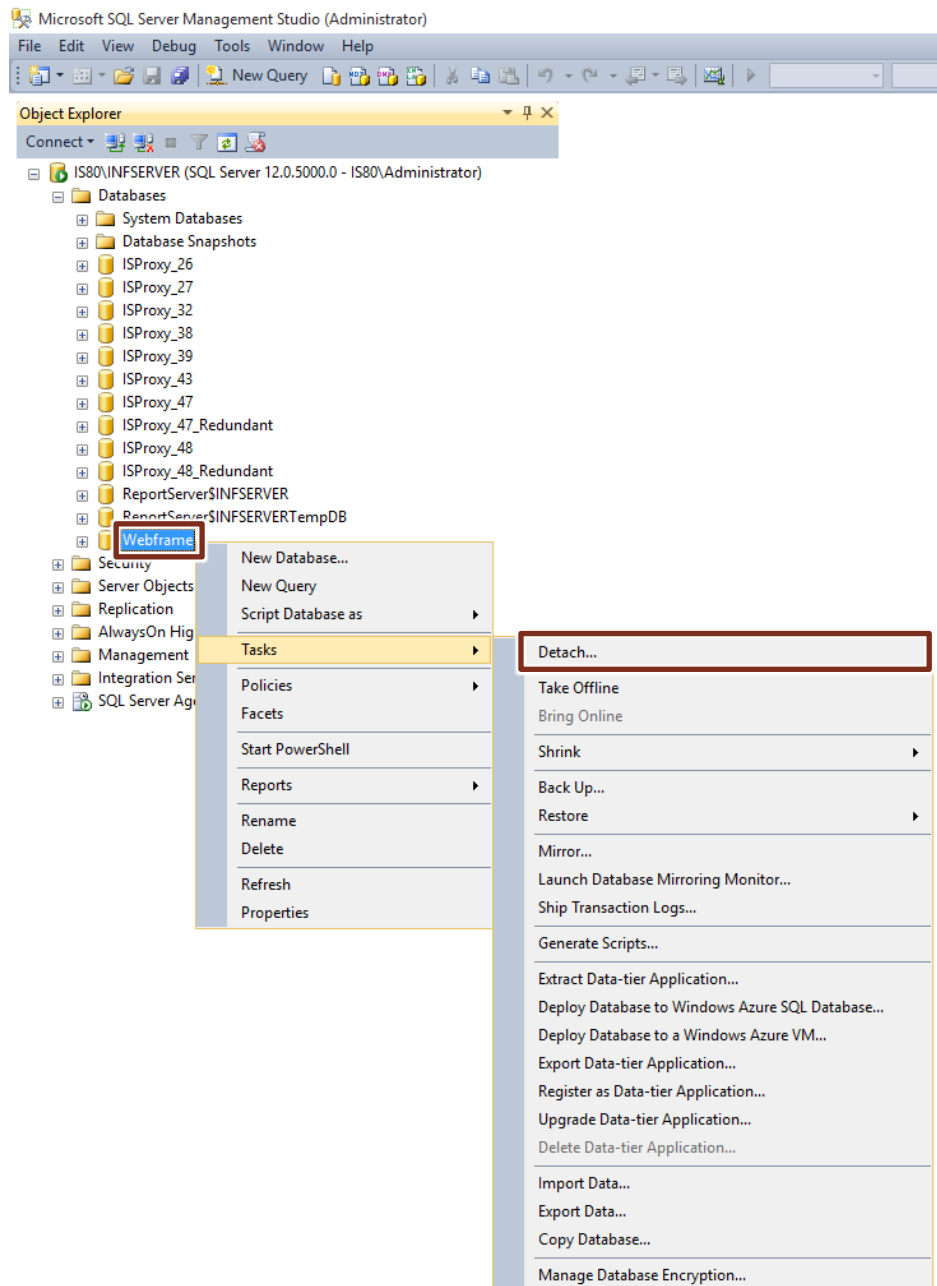
3. In Object Explorer, navigate to the IS database "Databases> Webframe" and select "Properties" in the context menu.



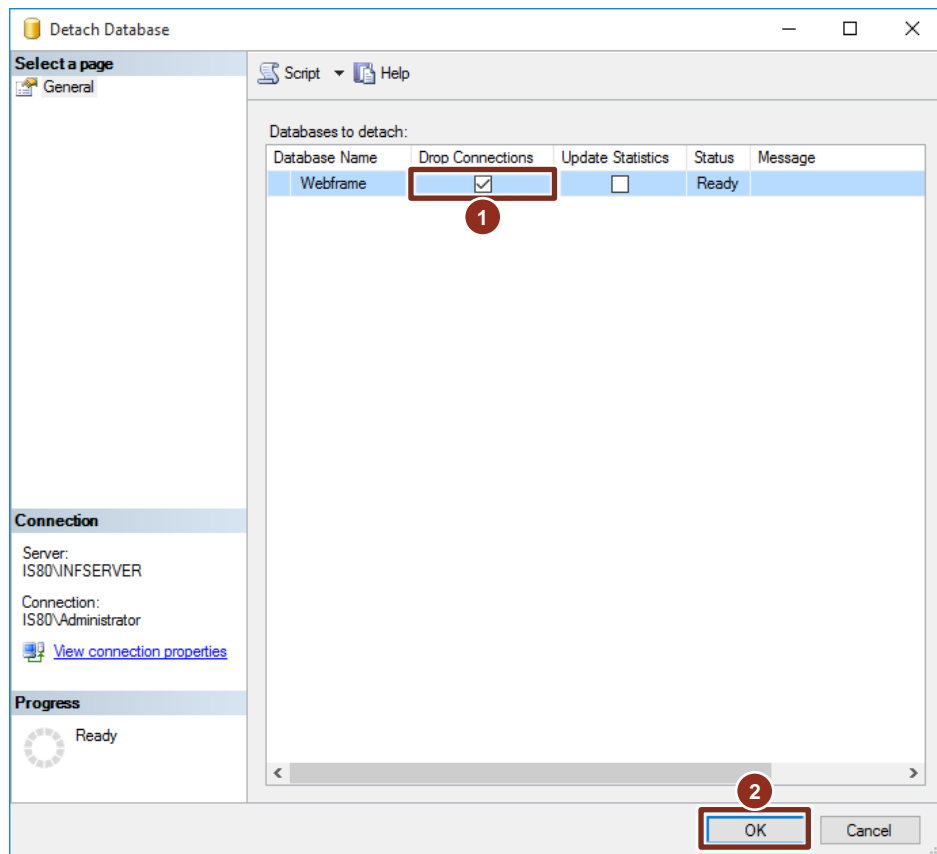
4. Go to the "Files" page and make a note of the file path of both database files displayed under "Path".
5. Click the "Cancel" button to close the properties.

Detach database

1. In Object Explorer, navigate to the IS database "Databases> Webframe" and select "Tasks> Detach..." in the context menu.

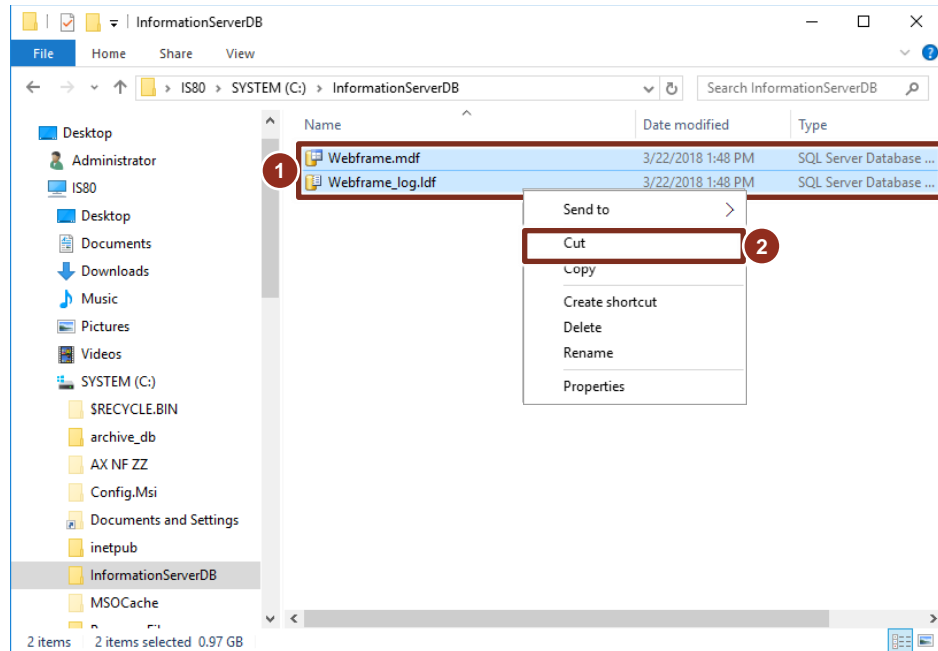


2. Activate the "Drop Connections" check box and confirm with "OK".

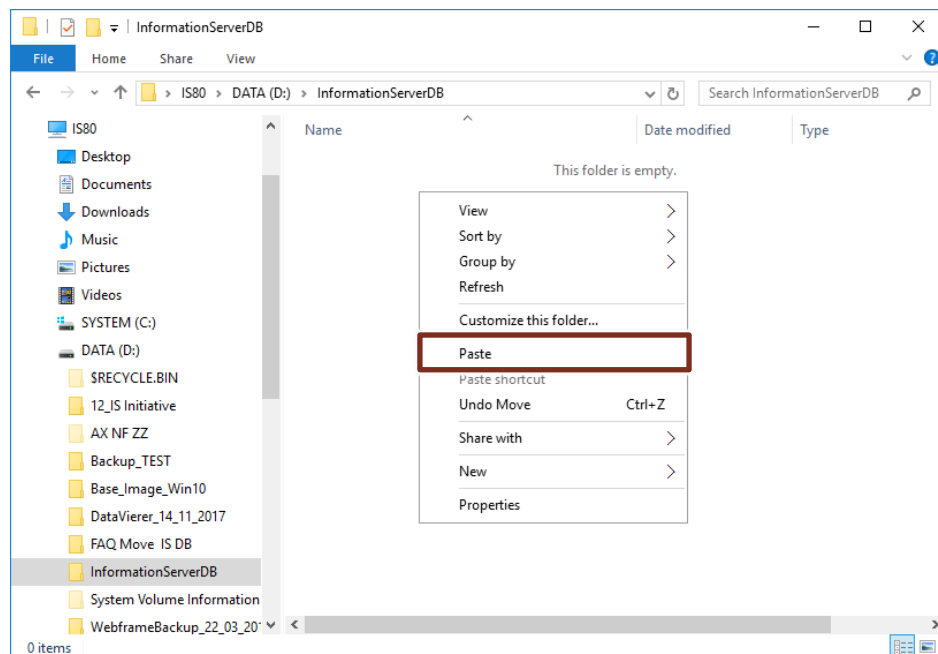


Move database

1. Open Windows Explorer, navigate to the desired destination-file path and create a new folder. It is recommended to use the same folder name as in the old path.
2. Navigate to the file path of the IS database ("Webframe"), mark the database files "Webframe.mdf" and "Webframe_log.ldf" and cut them out with the "Cut" command in the context menu.



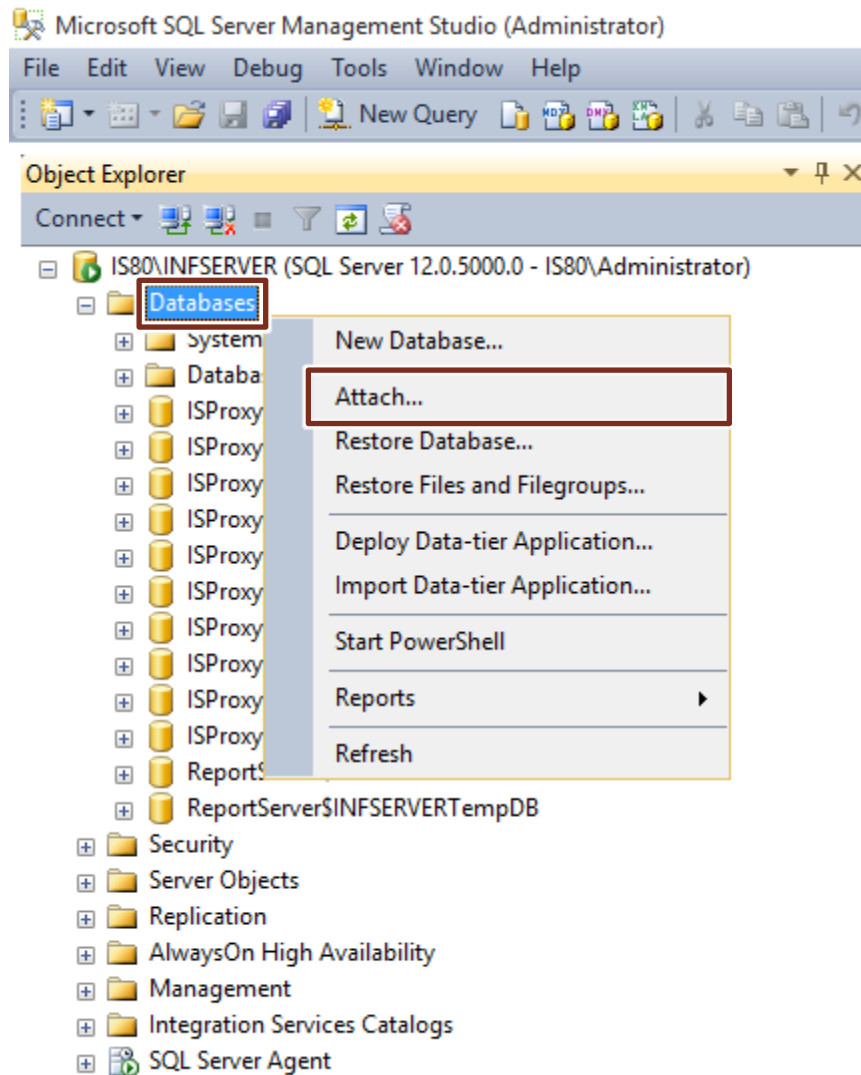
3. Navigate to the destination file path and paste the database files using the Paste command.



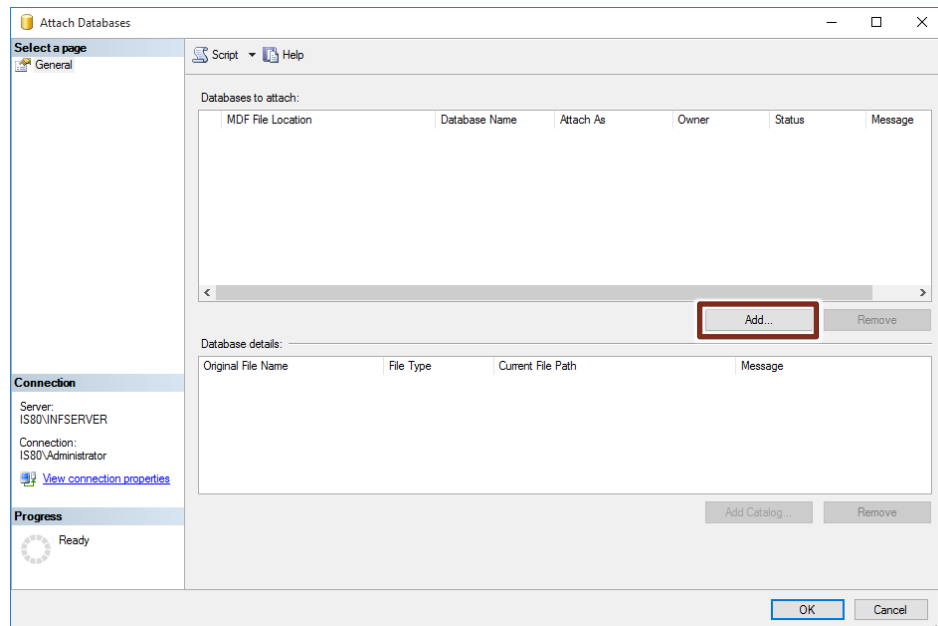
4. Close Windows Explorer.

Attach database

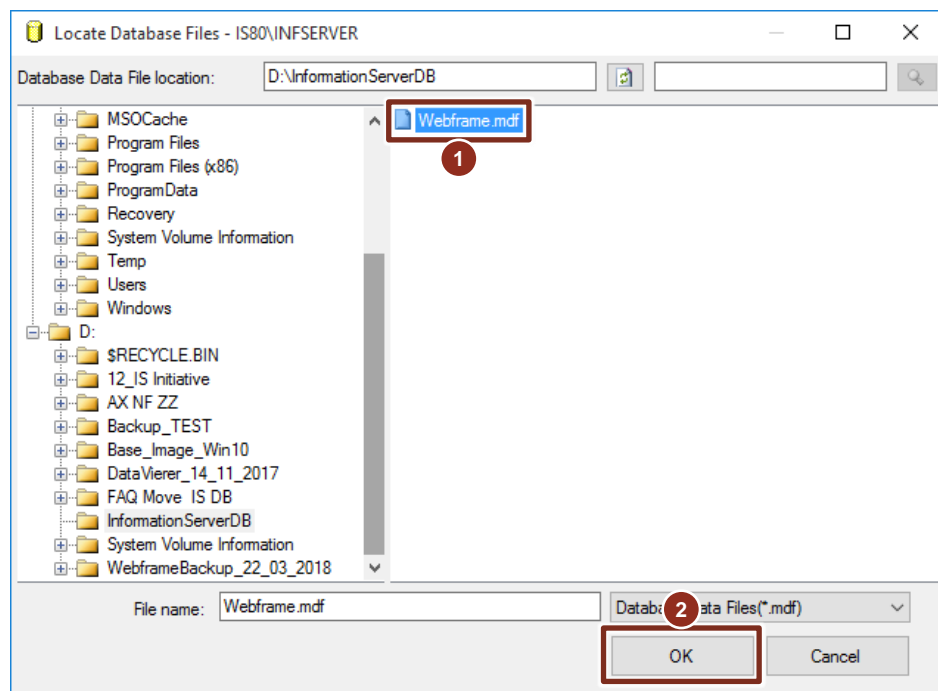
1. In Object Explorer, navigate to the databases "Databases" and select "Attach..." in the context menu.



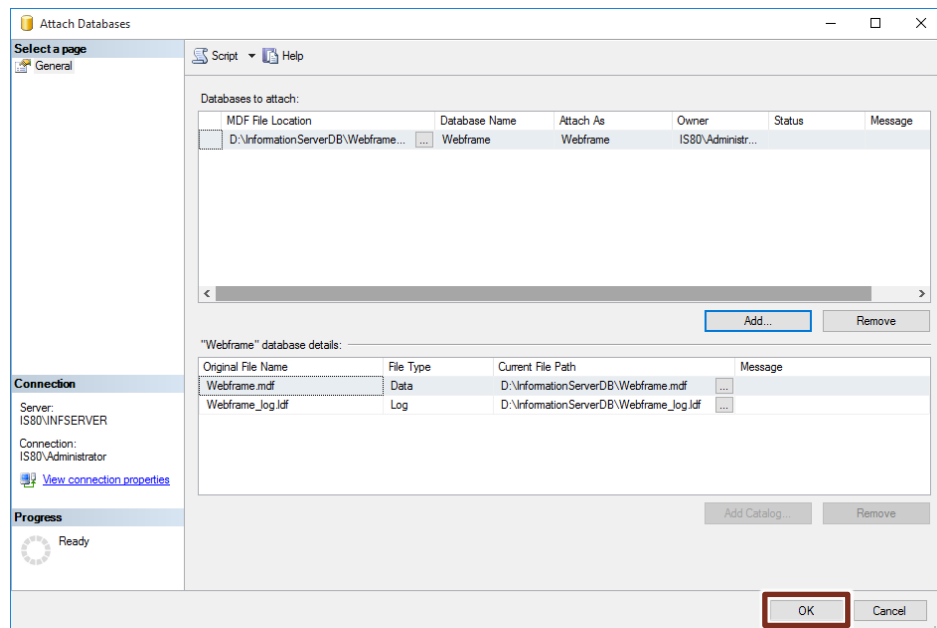
2. Click on "Add ...".



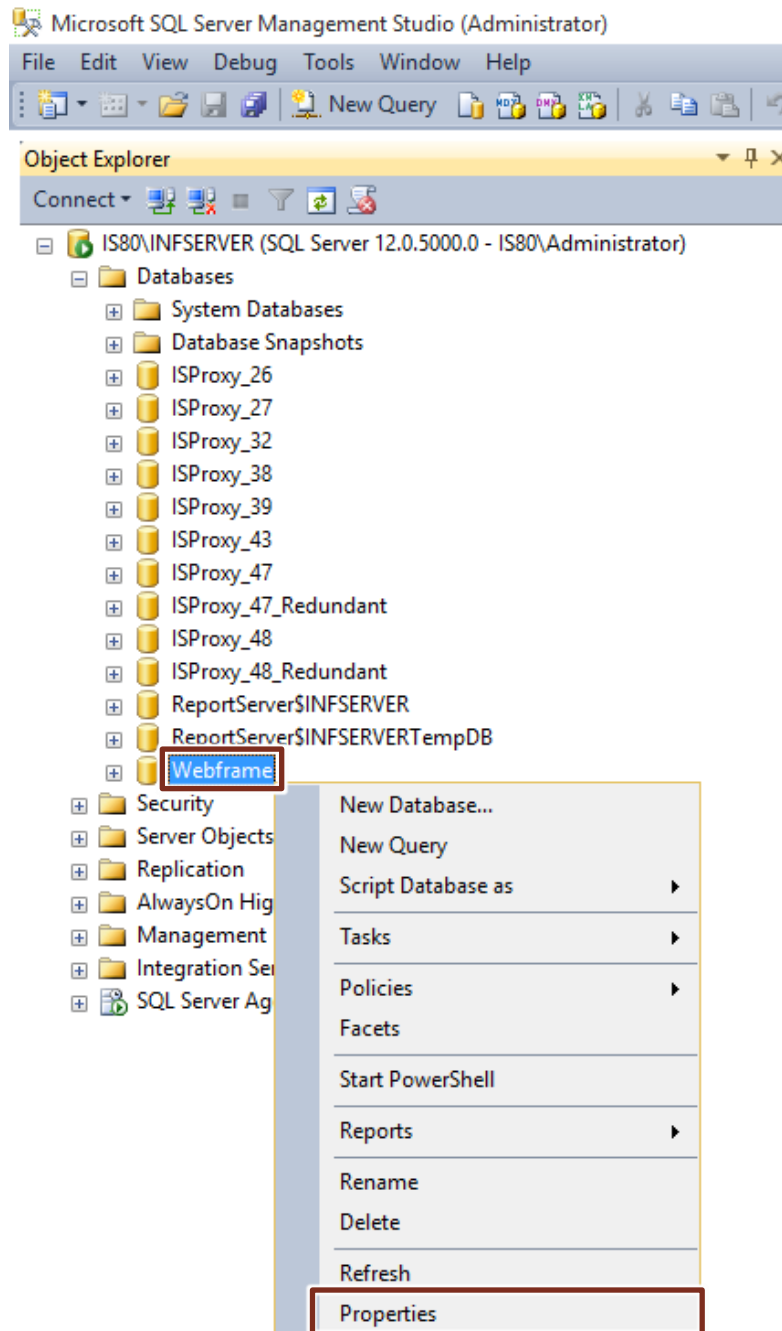
3. In the opened dialog, select the database file "Webframe.mdf" in the new file path and confirm with "OK".
The database file "Webframe_log.ldf" is automatically added.



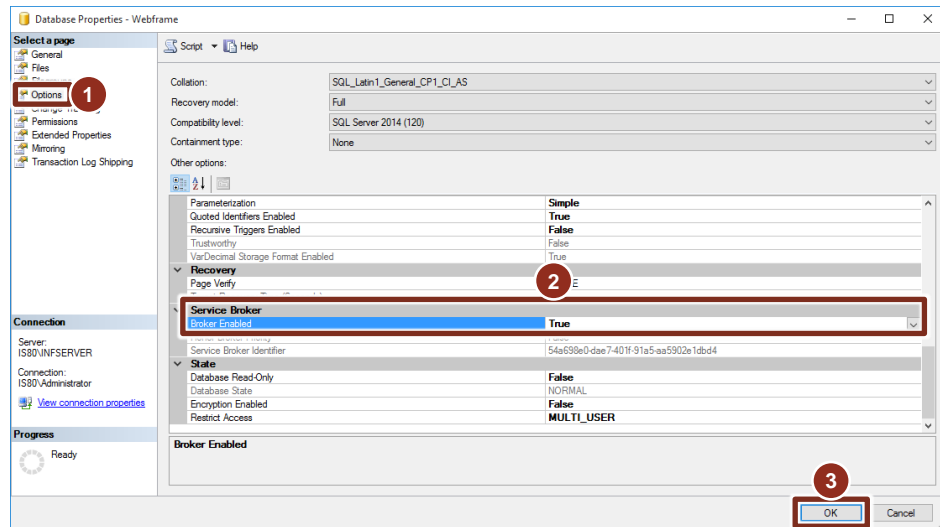
4. Acknowledge the dialog "Attach Databases" with "OK".



5. In Object Explorer, navigate to the IS database "Databases> Webframe" and select "Properties" in the context menu.



- Go to the Options page and enable the Service Broker by setting "Broker Enabled" to "True".



- Acknowledge the dialog "Database Properties" with "OK".

Restart the PC

Finally, close all open programs and restart the PC.

3 Appendix

3.1 Service and support

Industry Online Support

Do you have any questions or need assistance?

Siemens Industry Online Support offers round the clock access to our entire service and support know-how and portfolio.

The Industry Online Support is the central address for information about our products, solutions and services.

Product information, manuals, downloads, FAQs, application examples and videos – all information is accessible with just a few mouse clicks:

<https://support.industry.siemens.com>

Technical Support

The Technical Support of Siemens Industry provides you fast and competent support regarding all technical queries with numerous tailor-made offers – ranging from basic support to individual support contracts. Please send queries to Technical Support via Web form:

www.siemens.com/industry/supportrequest

SITRAIN – Training for Industry

We support you with our globally available training courses for industry with practical experience, innovative learning methods and a concept that's tailored to the customer's specific needs.

For more information on our offered trainings and courses, as well as their locations and dates, refer to our web page:

www.siemens.com/sitrain

Service offer

Our range of services includes the following:

- Plant data services
- Spare parts services
- Repair services
- On-site and maintenance services
- Retrofitting and modernization services
- Service programs and contracts

You can find detailed information on our range of services in the service catalog web page:

<https://support.industry.siemens.com/cs/sc>

Industry Online Support app

You will receive optimum support wherever you are with the "Siemens Industry Online Support" app. The app is available for Apple iOS, Android and Windows Phone:

<https://support.industry.siemens.com/cs/ww/en/sc/2067>

3.2 Links and Literature

Table 3-1

No.	Topic
\1\	Siemens Industry Online Support https://support.industry.siemens.com
\2\	Link to the entry page for the application example https://support.industry.siemens.com/cs/ww/en/view/66579062
\3\	

3.3 Change documentation

Table 3-2

Version	Date	Change
V1.0	05/2018	First edition