

SIEMENS



Application Description • 05/2015

Remote Access to SIMATIC HMI Comfort Panels

VPN connection

<https://support.industry.siemens.com/cs/ww/en/109476153>

Warranty and Liability

Note

The Application Examples are not binding and do not claim to be complete with regard to configuration, equipment or any contingencies. The Application Examples do not represent customer-specific solutions. They are only intended to provide support for typical applications. You are responsible for the correct operation of the described products. These Application Examples do not relieve you of the responsibility of safely and professionally using, installing, operating and servicing equipment. When using these Application Examples, you recognize that we cannot be made liable for any damage/claims beyond the liability clause described. We reserve the right to make changes to these Application Examples at any time and without prior notice. If there are any deviations between the recommendations provided in this Application Example and other Siemens publications – e.g. catalogs – the contents of the other documents have priority.

We do not accept any liability for the information contained in this document.

Any claims against us – based on whatever legal reason – resulting from the use of the examples, information, programs, engineering and performance data etc., described in this application example will be excluded. Such an exclusion will not apply in the case of mandatory liability, e.g. under the German Product Liability Act (“Produkthaftungsgesetz”), in case of intent, gross negligence, or injury of life, body or health, guarantee for the quality of a product, fraudulent concealment of a deficiency or breach of a condition which goes to the root of the contract (“wesentliche Vertragspflichten”). The compensation for damages due to a breach of a fundamental contractual obligation is, however, limited to the foreseeable damage, typical for the type of contract, except in the event of intent or gross negligence or injury to life, body or health. The above provisions do not imply a change of the burden of proof to your detriment.

Any form of duplication or distribution of these Application Examples or excerpts hereof is prohibited without the expressed consent of Siemens Industry Sector.

Security information

Siemens provides products and solutions with industrial security functions that support the secure operation of plants, solutions, machines, equipment and/or networks. They are important components in a holistic industrial security concept. With this in mind, Siemens' products and solutions undergo continuous development. Siemens recommends strongly that you regularly check for product updates.

For the secure operation of Siemens products and solutions, it is necessary to take suitable preventive action (e.g. cell protection concept) and integrate each component into a holistic, state-of-the-art industrial security concept. Third-party products that may be in use should also be considered. For more information about industrial security, visit <http://www.siemens.com/industrialsecurity>.

To stay informed about product updates as they occur, sign up for a product-specific newsletter. For more information, visit <http://support.automation.siemens.com>.

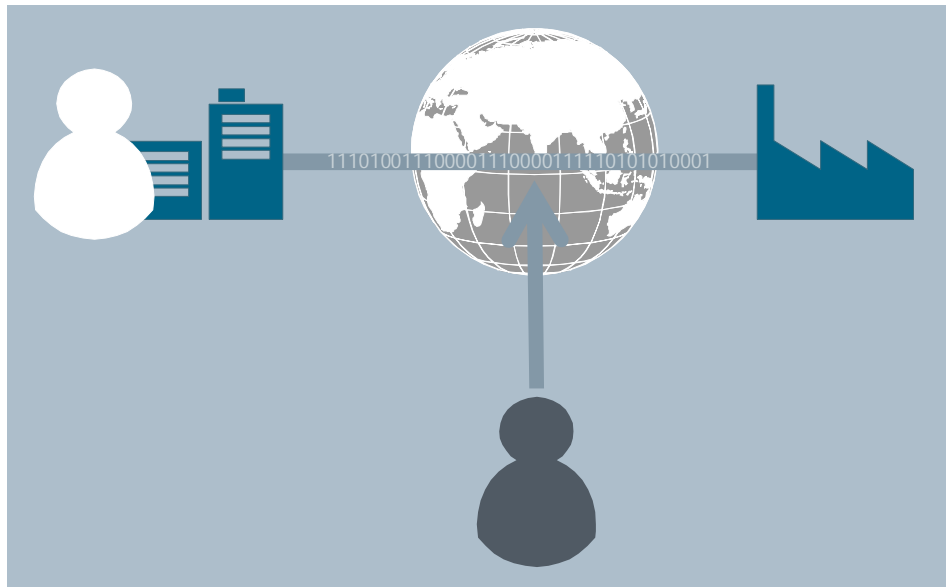
Table of Contents

	Warranty and Liability	2
1	Task.....	4
2	Solution.....	5
3	Configuration.....	6
4	Links & Literature.....	7
5	History	7

1 Task

Access to an operator panel over large distances can be realized via the internet. To protect your know-how, it must be ensured, that no unauthorized staff can gain access to the operator panel or the transferred data. This must be ensured on the one hand, by using secure passwords and on the other, by securing the connection.

Figure 1-1

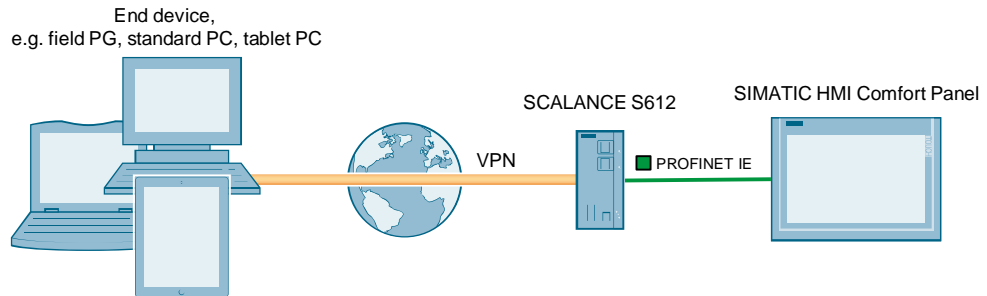


2 Solution

Schematic layout

The figure below shows a schematic overview of the most important components of the solution:

Figure 2-1



Scenarios

The VPN connection can be realized with various components. As a selection aid, the solutions described below help you realize the scenarios discussed in the entry. An overview of alternative access paths is available in entry \5\.

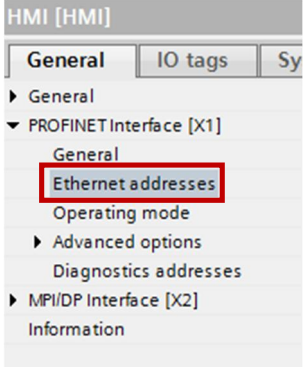
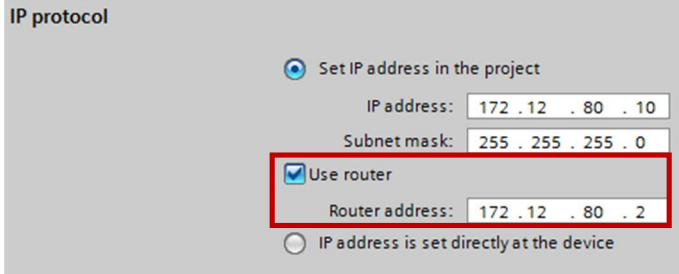
To transfer the project, to display the web pages of the SIMATIC HMI Comfort Panel, or to use the Sm@rtClient Viewer, you create a VPN connection from your PC to the automation cell. You can, for example, use the SOFTNET Security Client on your PC and a SCALANCE S612 at the SIMATIC HMI Comfort Panel. A description is contained in the entry \3\.

To access the SIMATIC HMI Comfort Panel from your smart phone or tablet via the Sm@rtClient App, you establish the VPN connection between smart phone and automation cell. From an Android-based device, you can establish a connection with SCALANCE S612 via the NCP VPN Client App. A description is contained in the entry \4\.

3 Configuration

To make the SIMATIC HMI Comfort Panel accessible via the VPN connection, SCALANCE S612 must be entered as standard gateway.

Table 3-1

No.	Procedure
1.	Open the device configuration of the operator panel in the WinCC (TIA Portal) project.
2.	<p>Click on the operator panel and select "PROFINET interface [X1] > Ethernet addresses".</p> 
3 a	<p>Enter IP address and subnet mask of the operator panel. Activate "Use router", and in "Router address" you enter the IP address of the internal interface of the SCALANCE S612.</p> 
3.	Transfer the project to the operator panel.

4 Links & Literature

Table 4-1

	Topic	Title
\1\	Siemens Industry Online Support	http://support.automation.siemens.com
\2\	Download page of the entry	https://support.industry.siemens.com/cs/ww/en/109476153
\3\	VPN connection with SOFTNET Security Client and SCALANCE S612	https://support.industry.siemens.com/cs/ww/en/view/99681083
\4\	VPN connection with NCP VPN Client App and SCALANCE S612	https://support.industry.siemens.com/cs/ww/en/view/99680894
\5\	IP-based Remote Networks	https://support.industry.siemens.com/cs/ww/en/view/26662448

5 History

Table 5-1

Version	Date	Modifications
V1.0	05/2015	First version