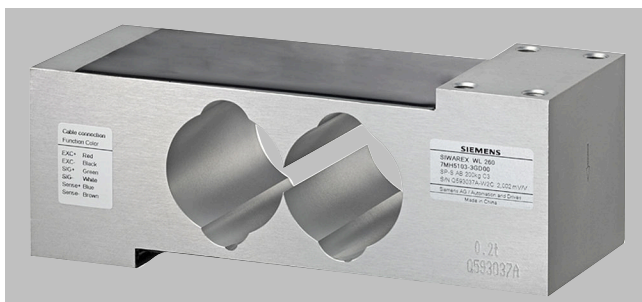


## Load Cells

### Single point load cells

#### SIWAREX WL260 SP-S AB Load cell

#### Overview



The load cell is suitable for small to medium platform scales with one load cell and platform size up to 600 × 600 mm (23.62 × 23.62 inch) as well as for use in weighing machines of Class III with a max. division  $n_{\max} = 3\,000d$ .

#### Design

The load cell is hermetically sealed.

#### Selection and ordering data

Load cell, type WL260 SP-S AB Connecting cable 3 m (9.84 ft)	Article No. 7MH5103-
	● ● D 0 0
Click on the Article No. for the online configuration in the PIA Life Cycle Portal.	
<b>Rated load</b>	
• 50 kg (110.23 lb)	2 P
• 75 kg (165.35 lb)	2 S
• 100 kg (220.46 lb)	3 A
• 150 kg (330.69 lb)	3 E
• 200 kg (440.92 lb)	3 G
• 300 kg (661.37 lb)	3 K
• 500 kg (1102.31 lb)	3 P

#### Technical specifications

SIWAREX WL260 SP-S AB	
Possible applications	<ul style="list-style-type: none"> <li>Platform scales</li> <li>Belt scales</li> </ul>
Type of construction	Single point load cell
<b>Loads</b>	
Rated load $E_{\max}$	<ul style="list-style-type: none"> <li>50 kg (110.23 lb)</li> <li>75 kg (165.35 lb)</li> <li>100 kg (220.46 lb)</li> <li>150 kg (330.69 lb)</li> <li>200 kg (440.92 lb)</li> <li>300 kg (661.37 lb)</li> <li>500 kg (1 102.31 lb)</li> </ul>
Minimum initial loading $E_{\min}$	0 kg
Maximum working load $L_u$	150% $E_{\max}$
Breaking load $L_d$	300% $E_{\max}$
Safe side load $L_{sq}$	100% $E_{\max}$
<b>Measurement characteristic values</b>	
Rated displacement $h_n$ at $E_{\max}$	< 1.22 mm (0.048 inch)
Rated characteristic value $C_n$	2.0 ± 0.2 mV/V
Tolerance $D_0$ of zero signal	± 2 % $C_n$
Maximum scale interval $n_{LC}$	3 000

#### Technical specifications (Continued)

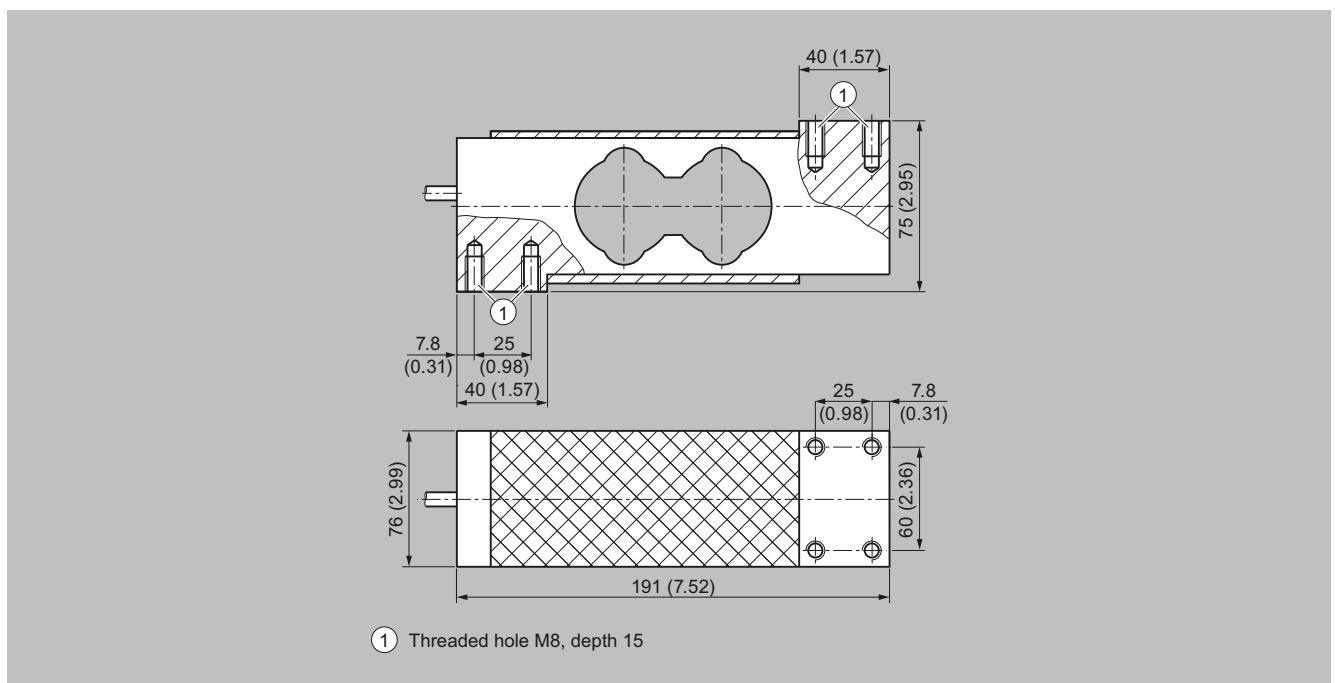
SIWAREX WL260 SP-S AB	
Minimum scale interval $V_{\min}$	$E_{\max}/10\,000$
Combined error $F_{\text{comb}}$	± 0.02% $C_n$
Repeatability $F_v$	± 0.017 % $C_n$
Creep error $F_{cr}$	
• 30 min	± 0.02% $C_n$
Temperature coefficient	
• Zero signal $T_{K_0}$	0.017% $C_n/10\,K$
• Characteristic value $T_{K_C}$	0.014% $C_n/10\,K$
<b>Electrical characteristic values</b>	
Recommended input voltage	5 ... 12 V DC
Input resistance $R_e$	409 Ω ± 6 Ω
Output resistance $R_s$	350 Ω ± 3 Ω
Insulation resistance $R_{is}$	5 000 MΩ at 50 V DC
<b>Connection and ambient conditions</b>	
Sensor material (DIN)	Aluminum
Maximum tightening torque of the fixing screws	35 ... 40 Nm
Rated temperature range $B_{tn}$	-10 ... +40 °C (+14 ... +104 °F)
Operating temperature range $B_{tu}$	-35 ... +65 °C (-31 ... +149 °F)
Storage temperature range $B_{ts}$	-35 ... +65 °C (-31 ... +149 °F)

### Technical specifications (Continued)

SIWAREX WL260 SP-S AB	
Degree of protection according to EN 60529, IEC 60529	IP65
<b>Cable connection</b>	
<b>Function</b>	<b>Color</b>
• EXC + (supply +)	Red
• EXC - (supply -)	Black
• SIG + (measured signal +)	Green
• SIG - (measured signal -)	White
• Sense + (sensor cable +)	Blue
• Sense - (sensor cable -)	Brown
• Shield (not connected to the load cell body)	Transparent
<b>Certificates and approvals</b>	
Accuracy class according to OIML R60	C3 <sup>1)</sup>

<sup>1)</sup> SIWAREX WL260 SP-S AB is not approved for legal-for-trade operation.

### Dimensional drawings



SIWAREX WL 260 SP-S AB load cell, dimensions in mm (inch)