

3VJ12 DB . . 3VJ12 EB . .
3VJ12 DA . . 3VJ12 EA . .

IEC 60947-2
EN 60947-2
IS / IEC 60947-2



Operating Instructions



DANGER

Hazardous voltage will cause death or serious injury. Turn off and lock out all power supply before working on this device. Replace all covers before power supplying this device is turned on.



NOTICE

Installation and maintenance must be carried out by qualified personnel.



Required tools



PZ2



0.6 x 3.5 mm



5 mm



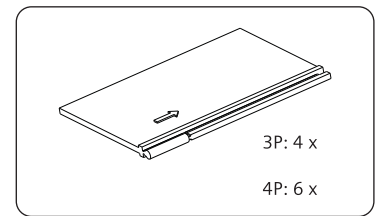
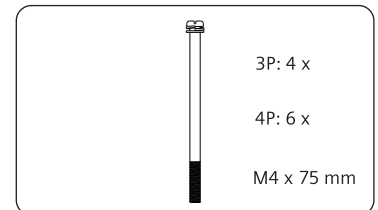
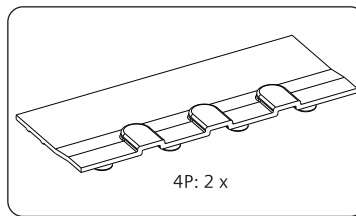
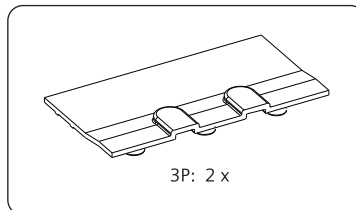
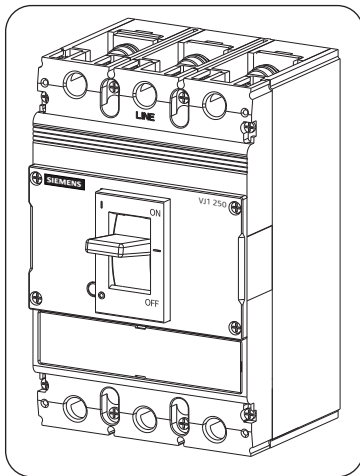
4.5 mm



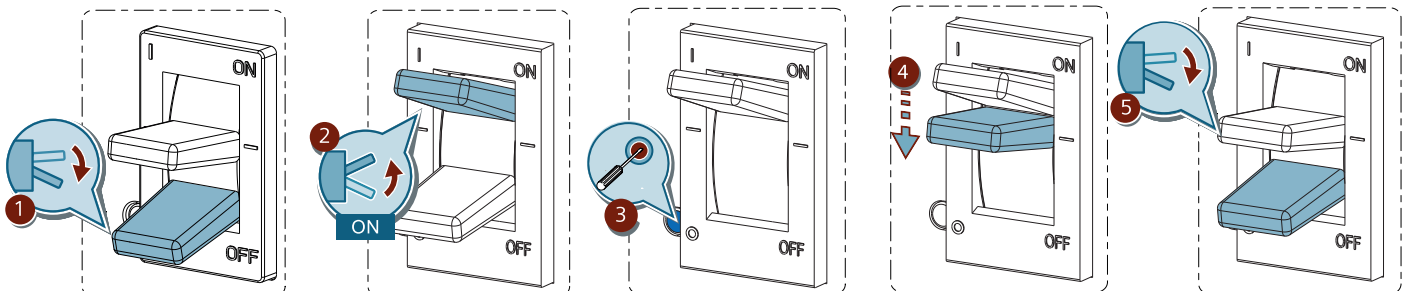
cal. ISO 6789



Contents

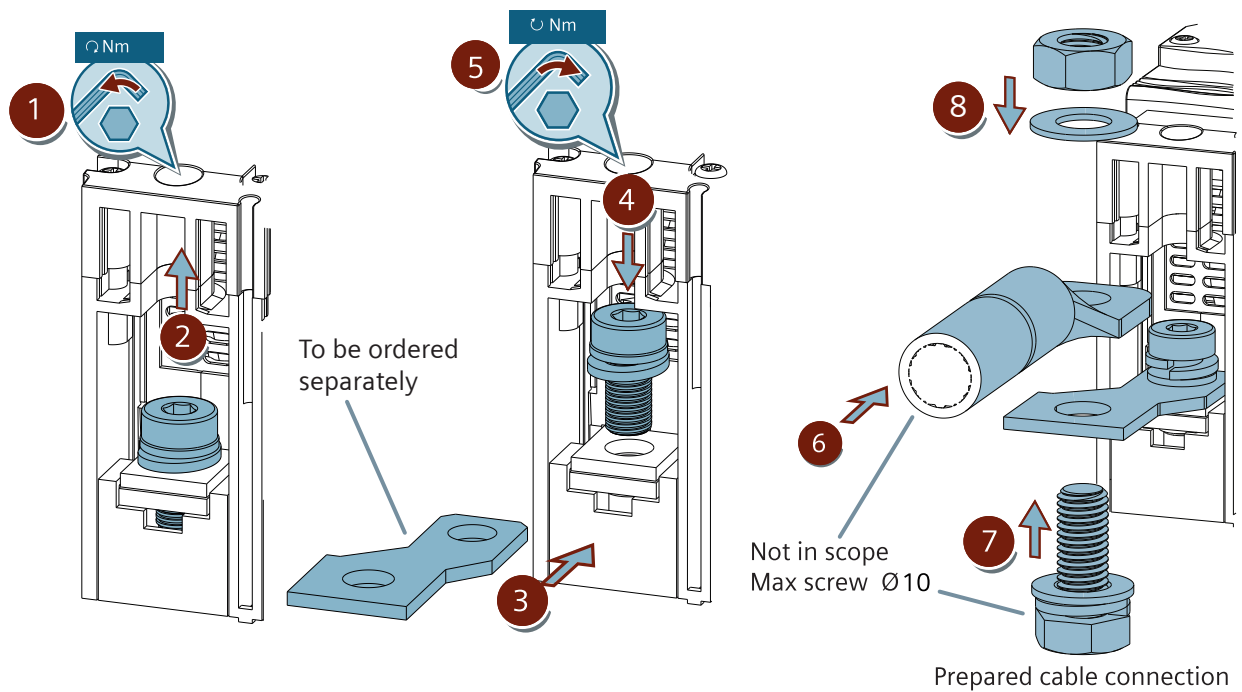


Test

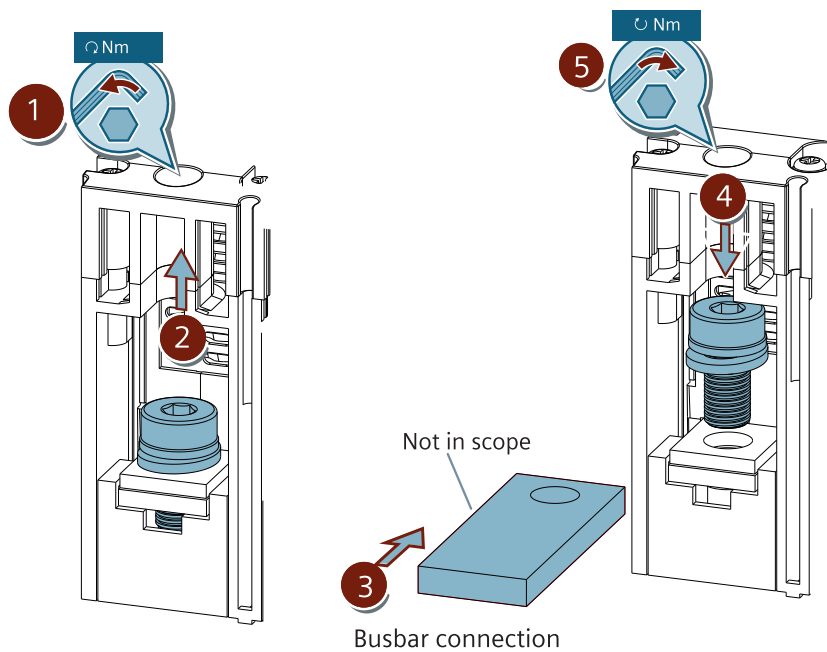




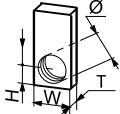


Assembly



Connection



	Cross Section Area mm ²	W _{max} mm	T mm	Ø mm	H mm	 mm	 Nm
	70~150	25	2.5~6	8.5	8	5	6

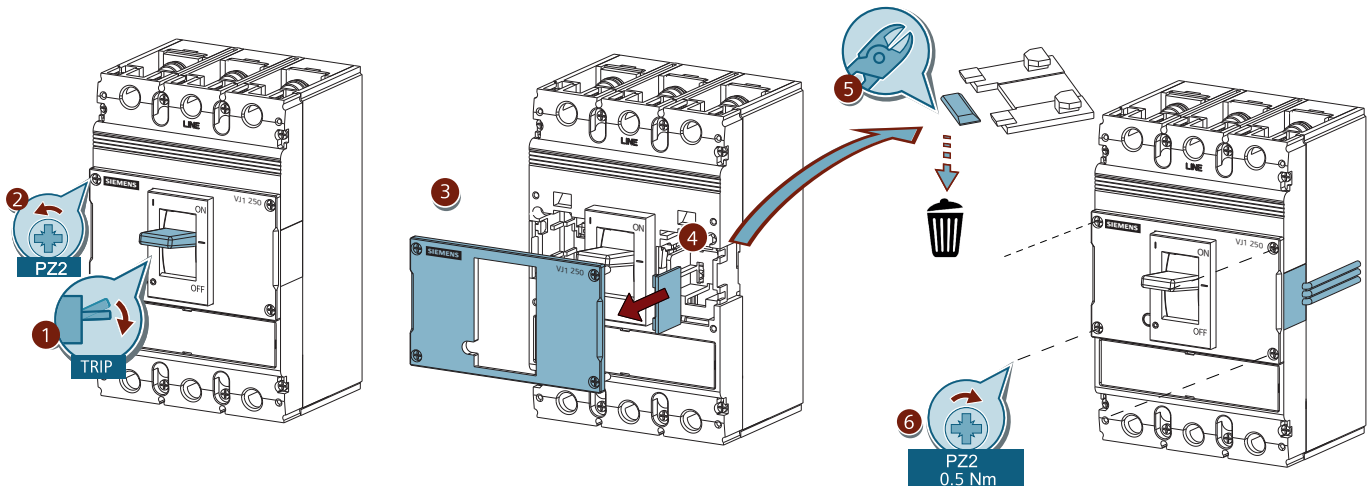


⚠ DANGER

Hazardous voltage will cause death or serious injury. Turn off and lock out all power supply before working on this device. Replace all covers before power supplying this device is turned on.



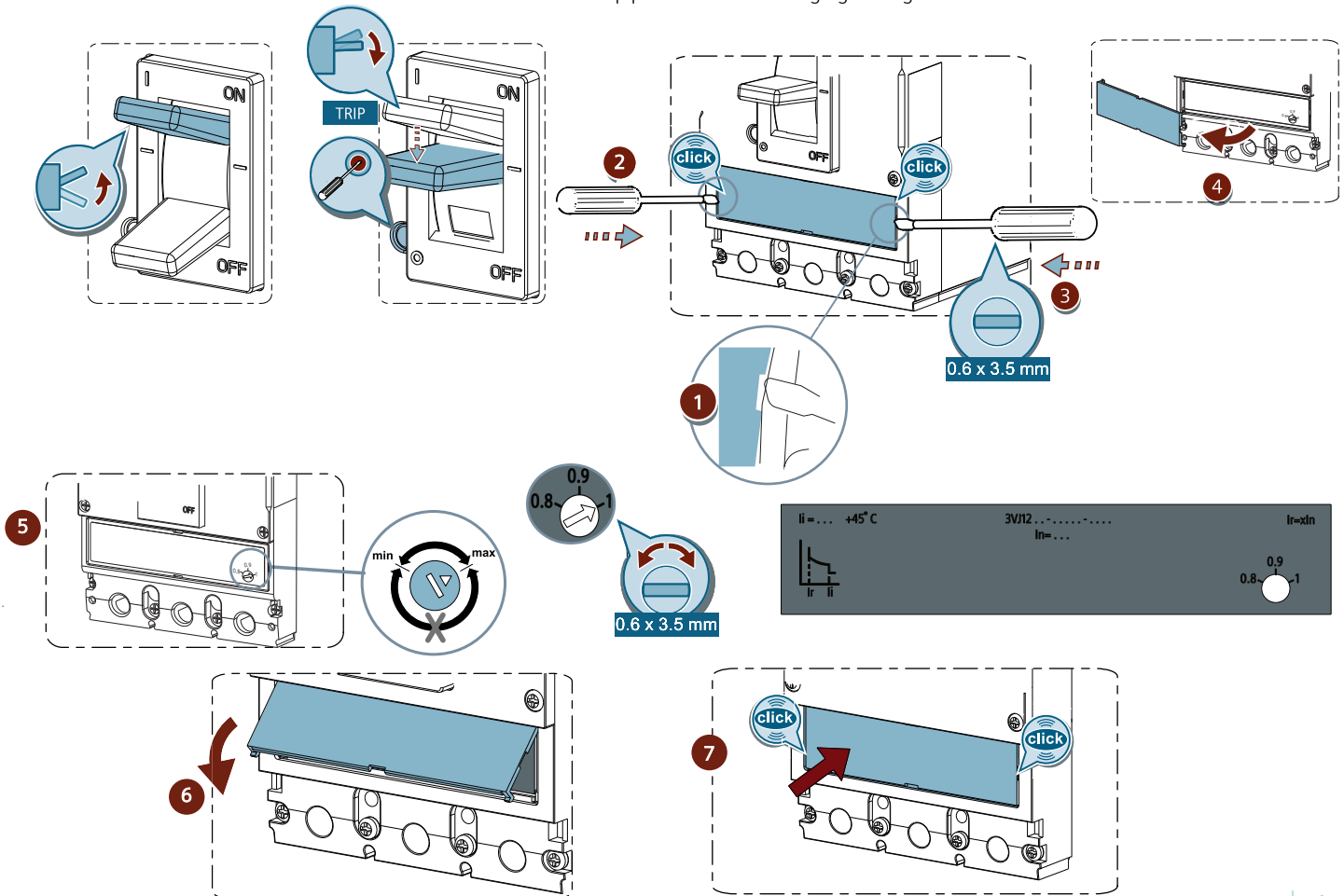
Information



Settings



Ensure breaker in Trip position before changing settings





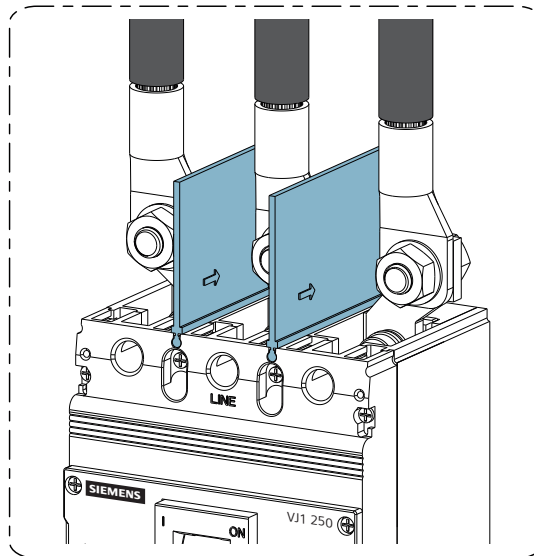
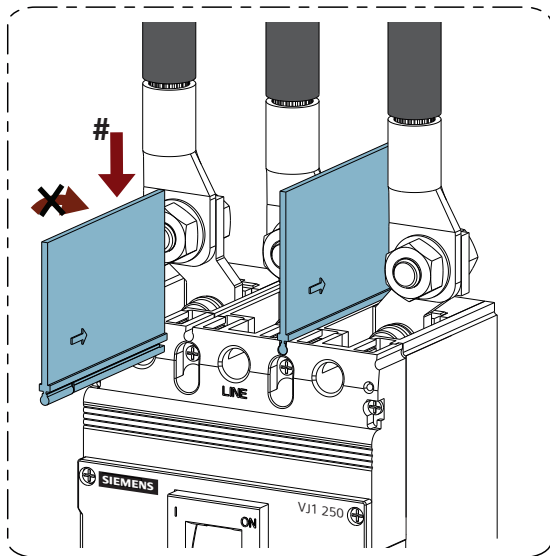
Assembly



DANGER

Hazardous voltage will cause death or serious injury. Turn off and lock out all power supply before working on this device. Replace all covers before power supplying this device is turned on.

Phase Barriers



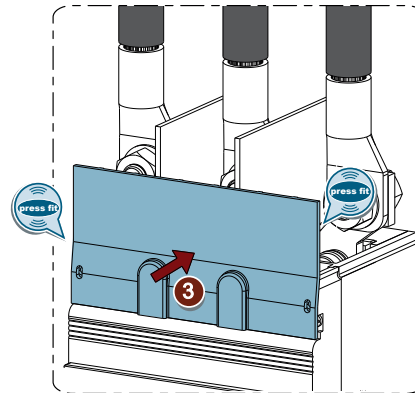
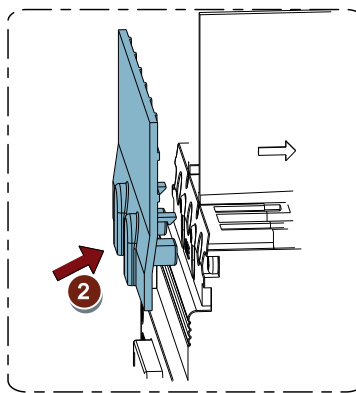
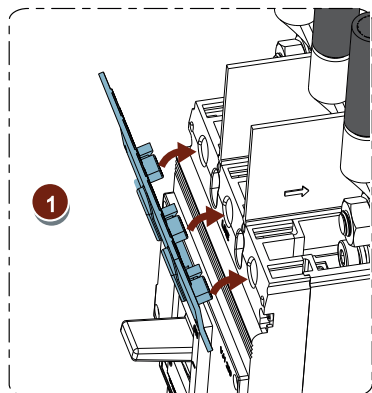
Push Phase barrier in close contact with groove surface in cover.

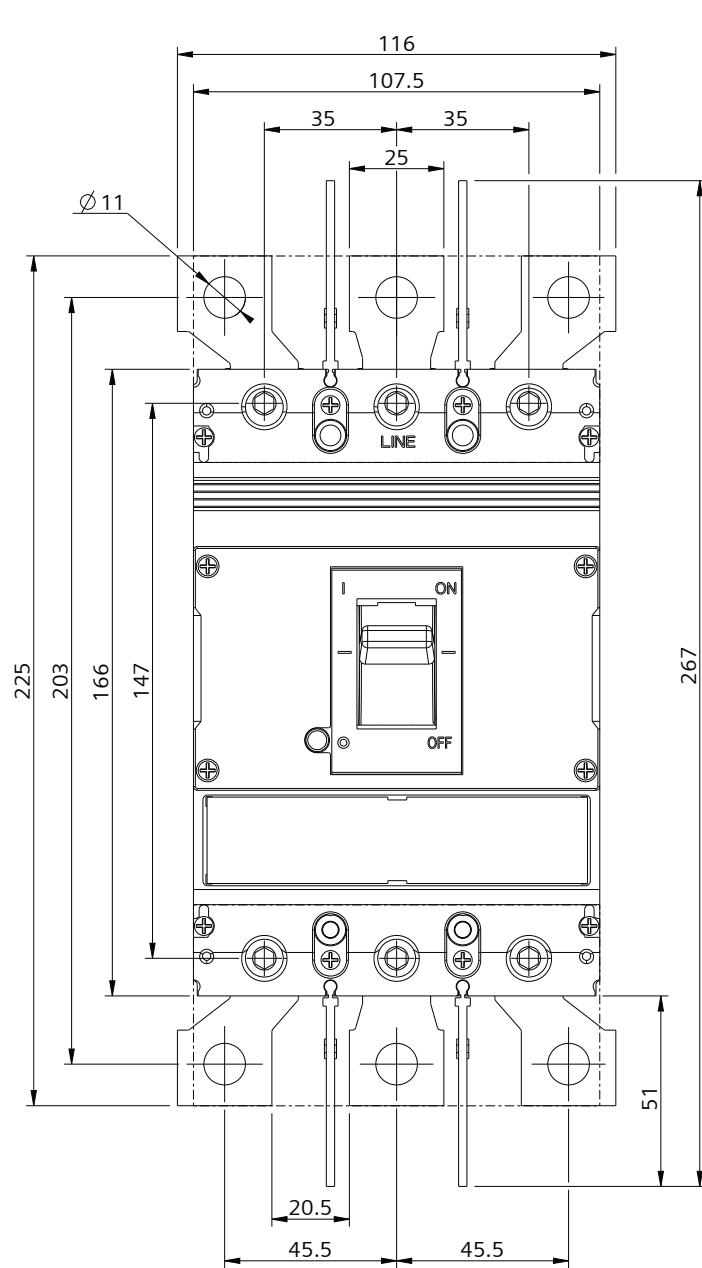


DANGER

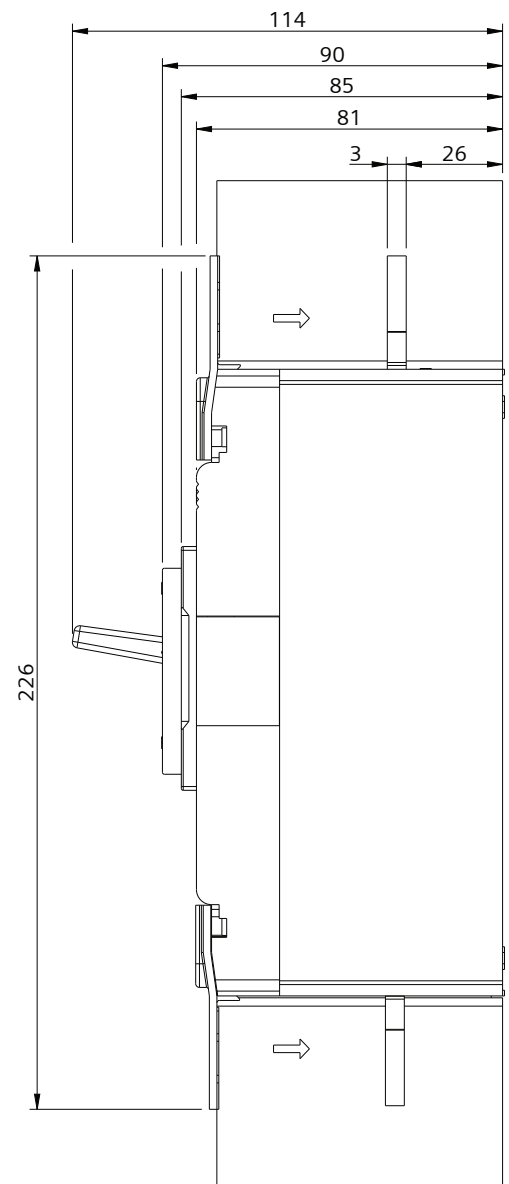
Hazardous voltage will cause death or serious injury. Turn off and lock out all power supply before working on this device. Replace all covers before power supplying this device is turned on.

Front Barriers



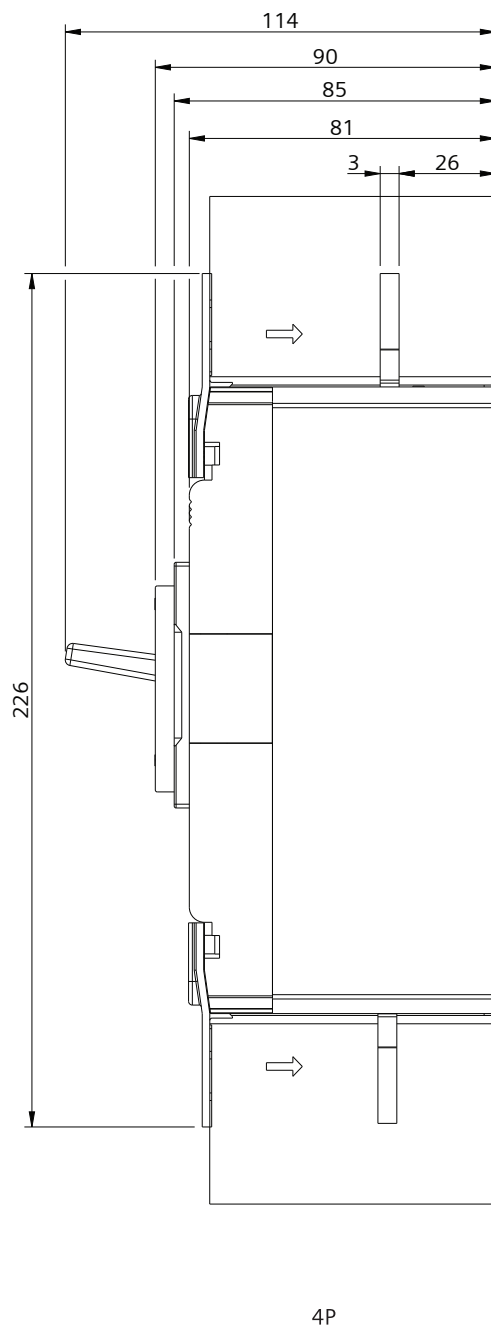
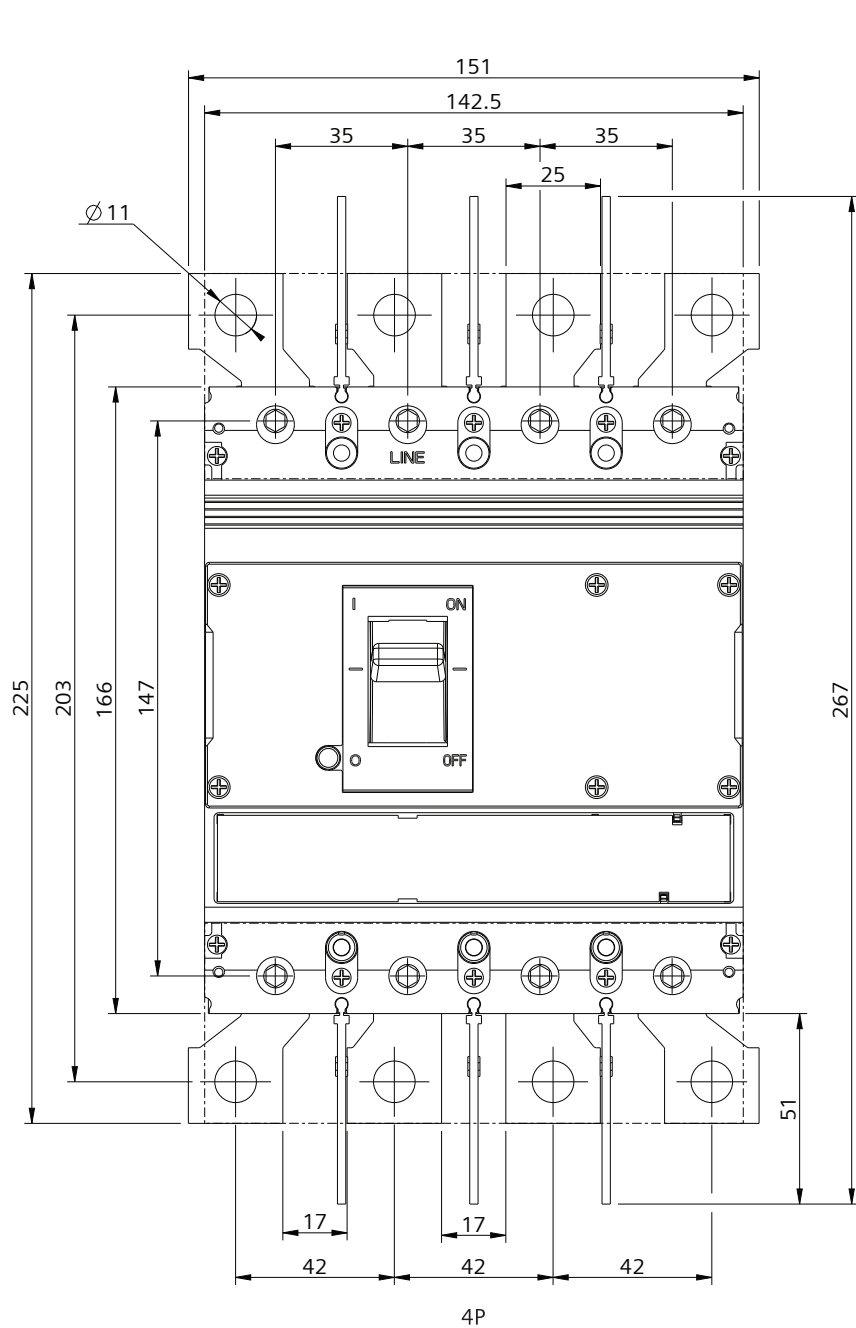


3P



3P

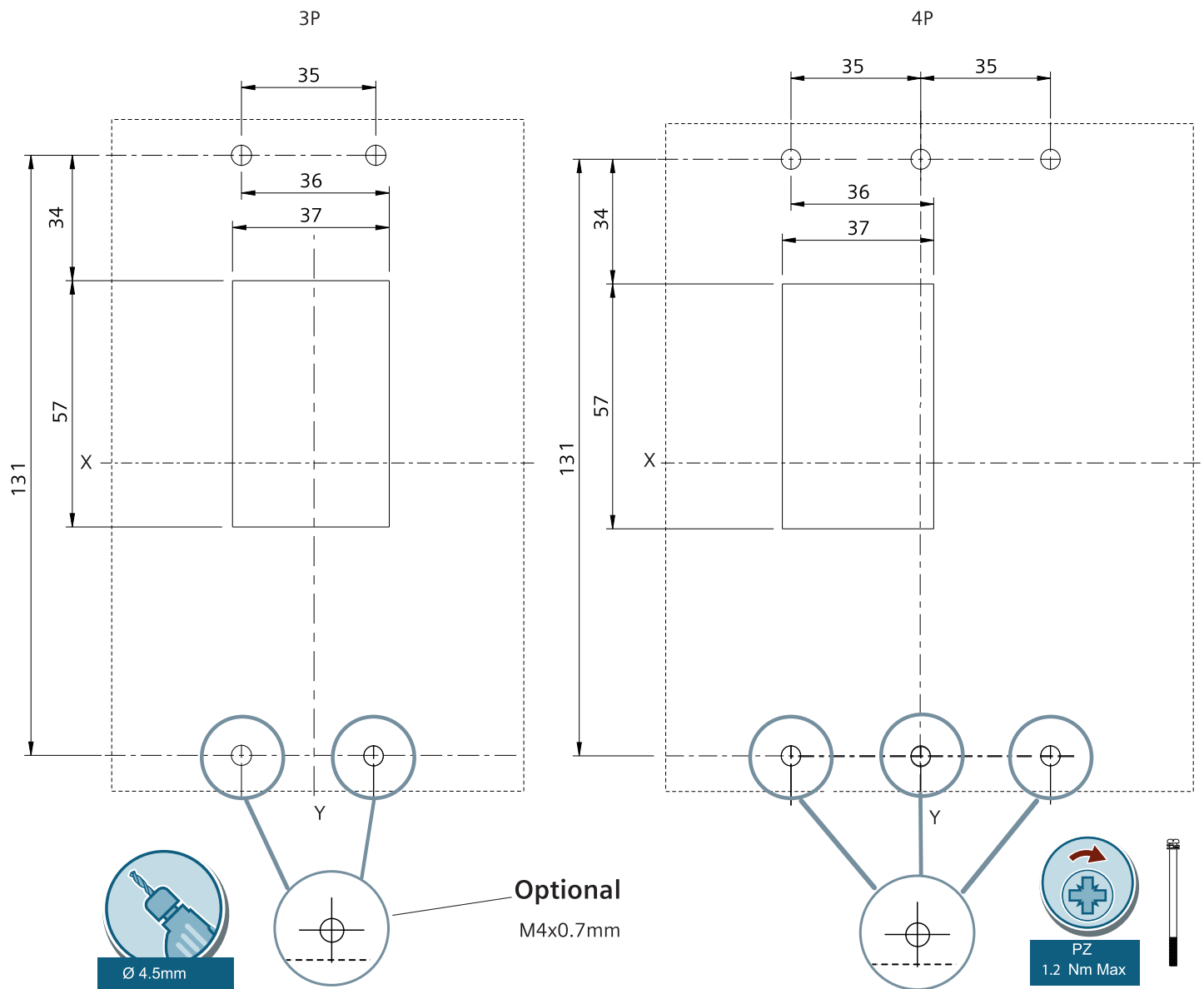
All dimensions are in mm



All dimensions are in mm



Knob cutout

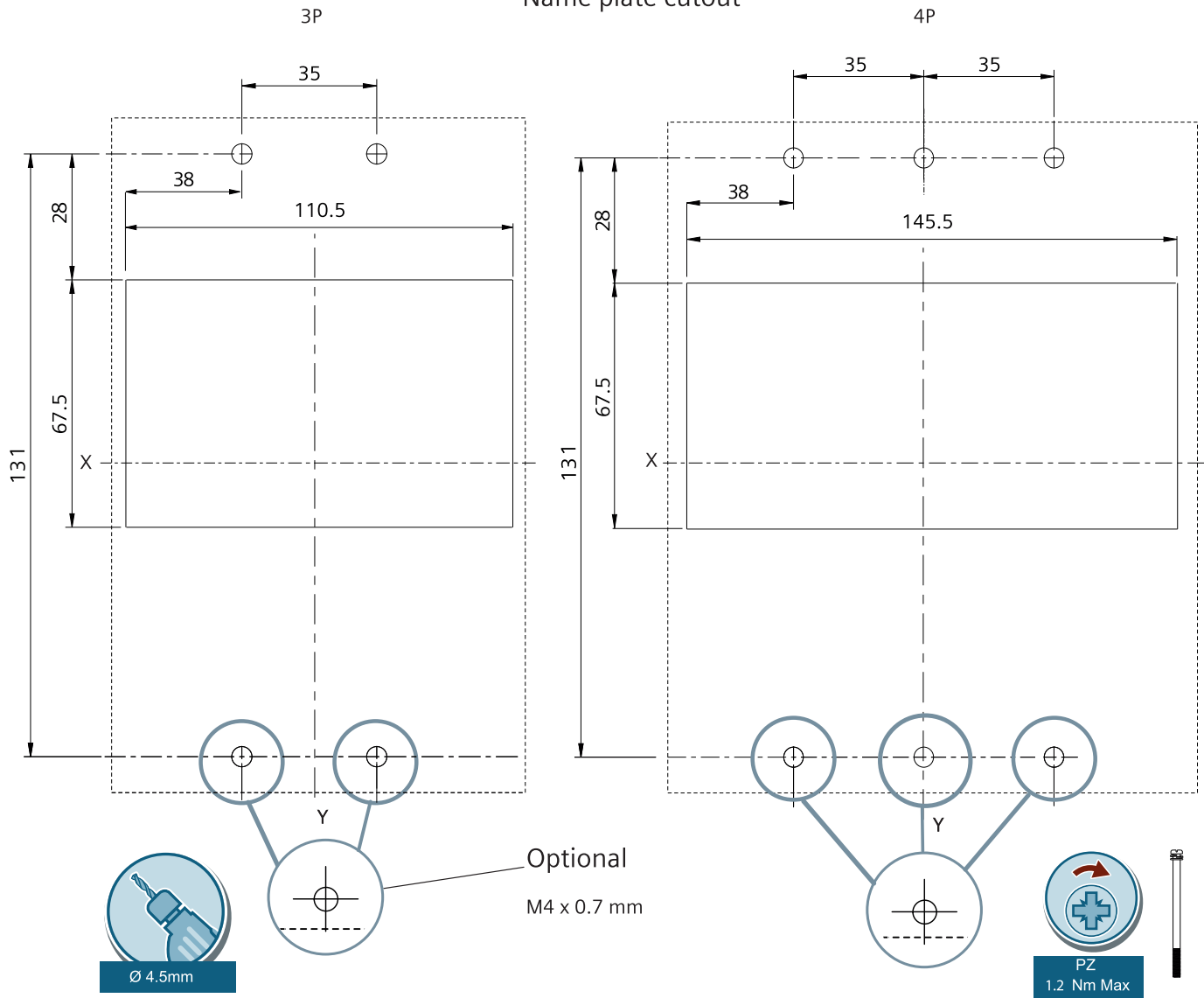




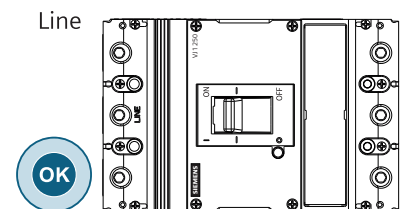
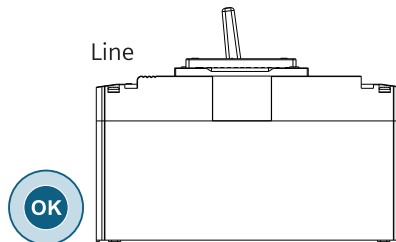
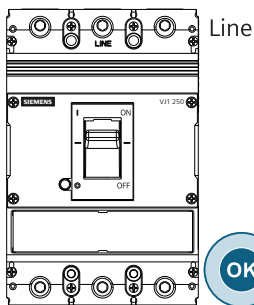
Assembly



Name plate cutout



Information



EN

NOTICE

These instructions do not purport to cover all details or variations in equipment, or to provide for every possible contingency in connection with installation, operation, or maintenance. Should additional information be desired, please contact the local Siemens sales office. The contents of this instruction manual shall not become part of or modify any prior or existing agreement, commitment, or relationship. The sales contract contains the entire obligation of Siemens. The warranty contained in the contract between the parties is the sole warranty of Siemens. Any statements contained herein do not create new warranties or modify the existing warranty.

Trademarks - Unless otherwise noted, all names identified by ® are registered trademarks of Siemens AG or Siemens Industry, Inc. The remaining trademarks in this publication may be trademarks whose use by third parties for their own purposes could violate the rights of the owner.