

3VJ10...-DB... 3VJ10...-EB...
3VJ10...-DA... 3VJ10...-EA...

IEC 60947-2
EN 60947-2
IS / IEC 60947-2



Operating Instructions



DANGER

Hazardous voltage will cause death or serious injury. Turn off and lock out all power supply before working on this device. Replace all covers before power supplying this device is turned on.



NOTICE

Installation and maintenance must be carried out by qualified personnel.



Required tools



PZ2



0.6 x 3.5 mm



5 mm



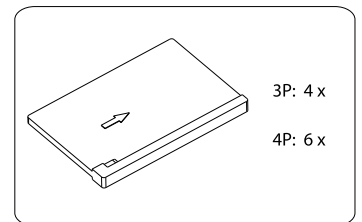
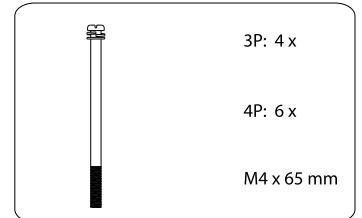
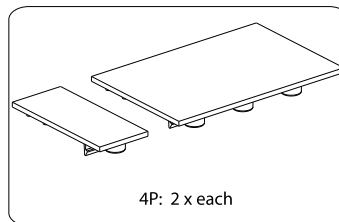
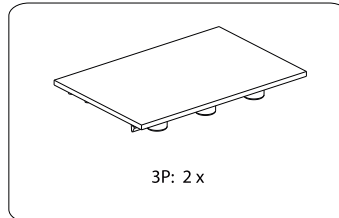
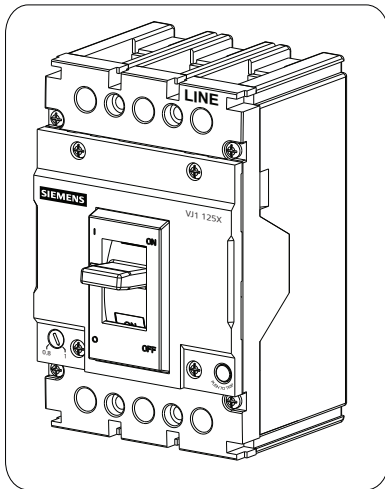
Ø 4.5 mm



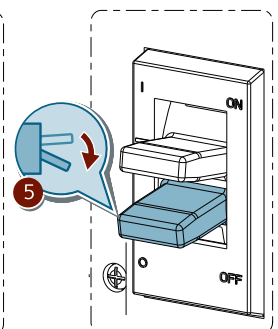
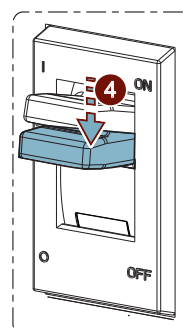
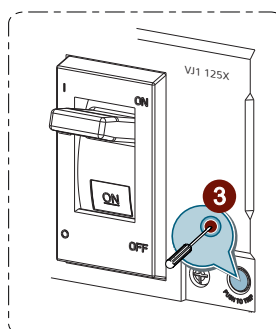
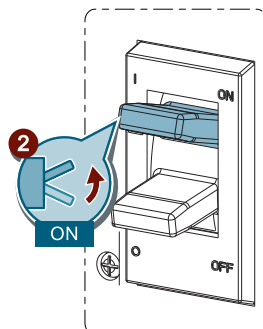
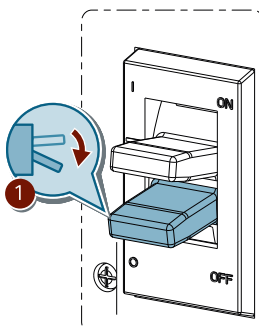
cal. ISO 6789



Contents

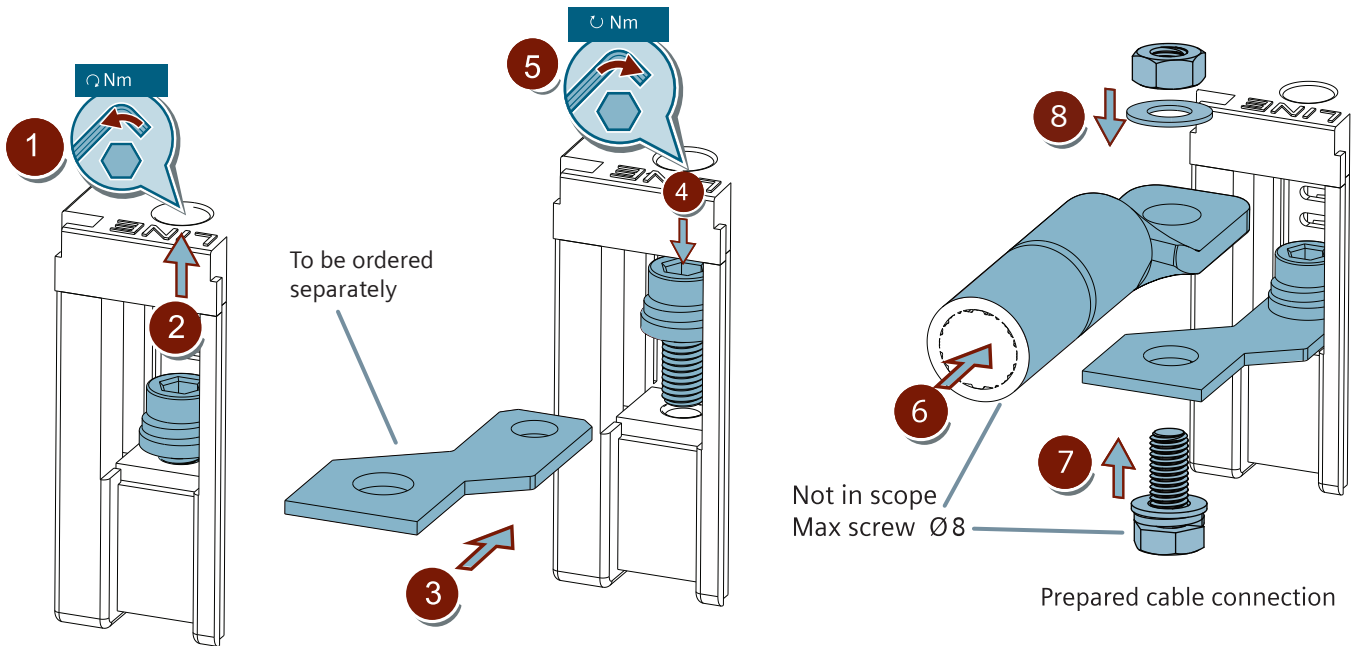


Test

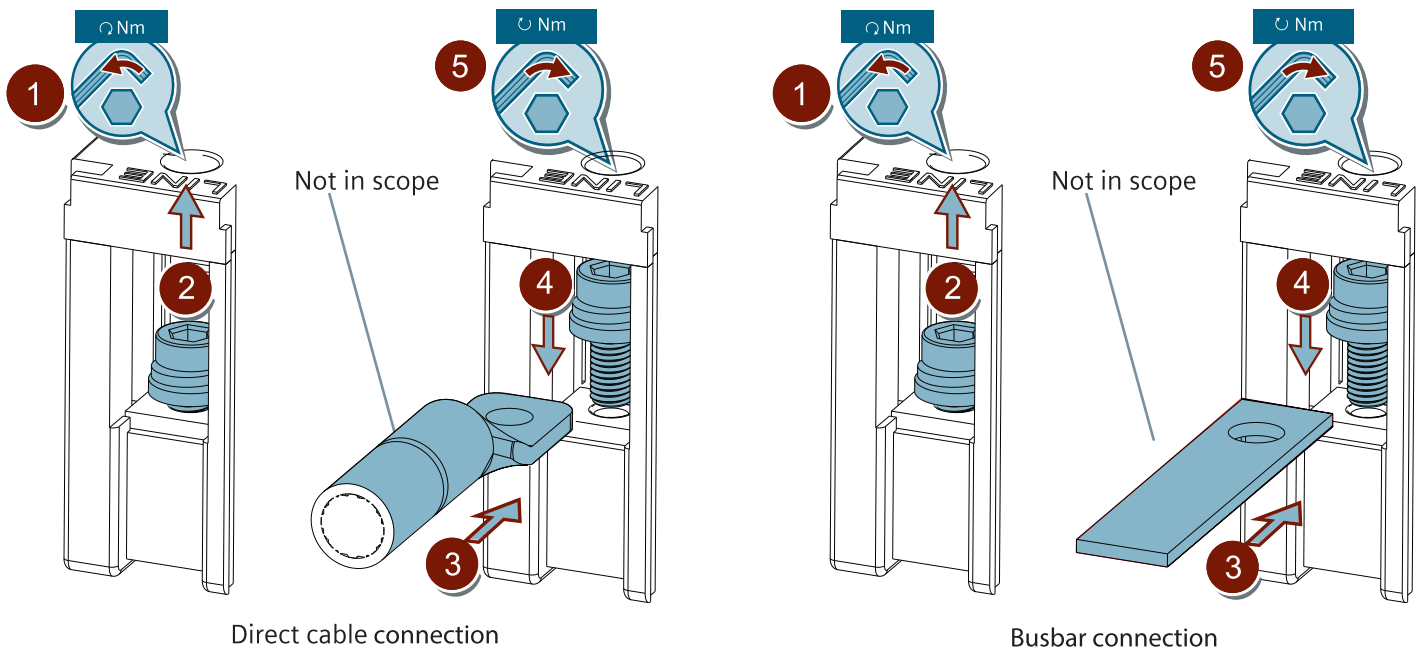




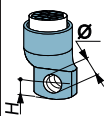
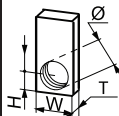


Assembly



Connection



		Cross Section Area mm ²	W _{max} mm	T mm	Ø mm	H mm	 mm	 Nm
		2.5~25	14	2~4	6.5	8	5	3

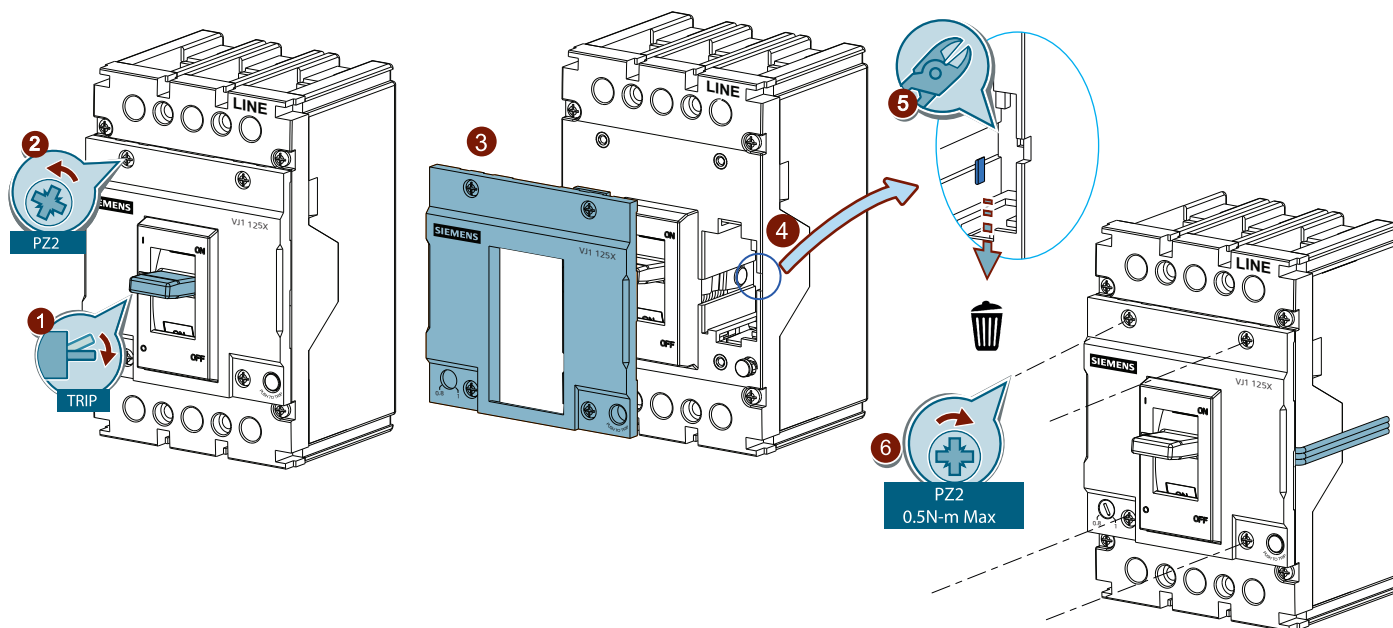


Information



DANGER

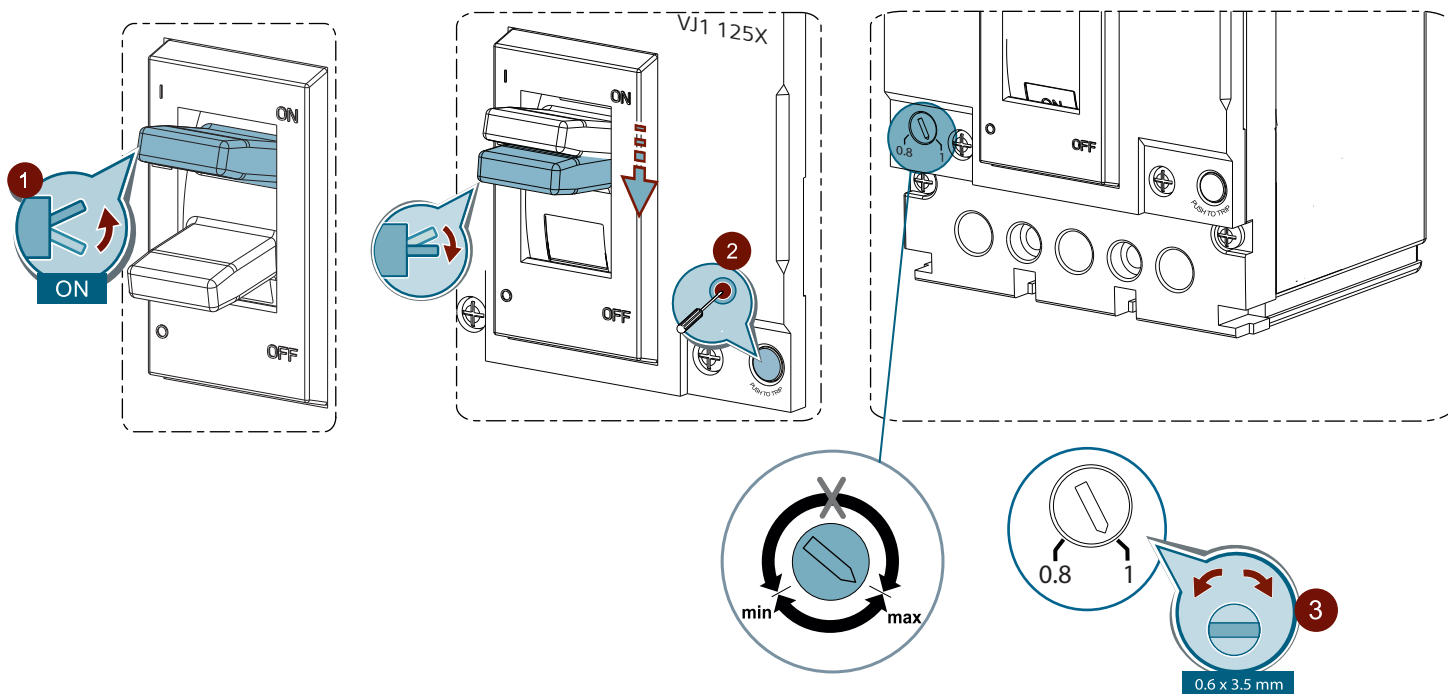
Hazardous voltage will cause death or serious injury. Turn off and lock out all power supply before working on this device. Replace all covers before power supplying this device is turned on.



Settings



Ensure breaker in Trip position before changing settings.





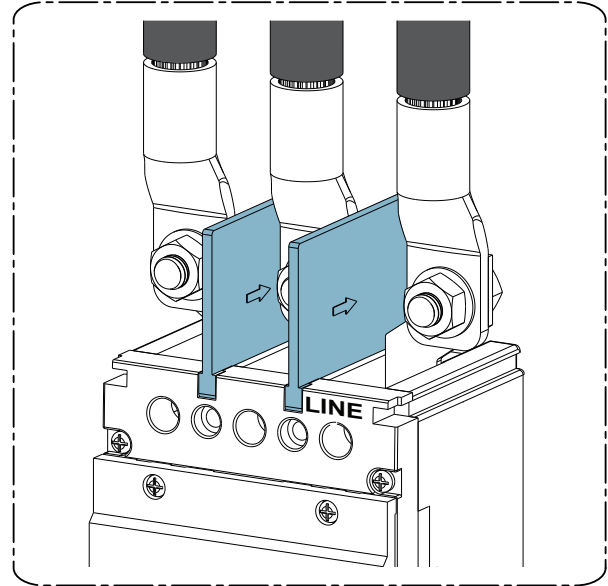
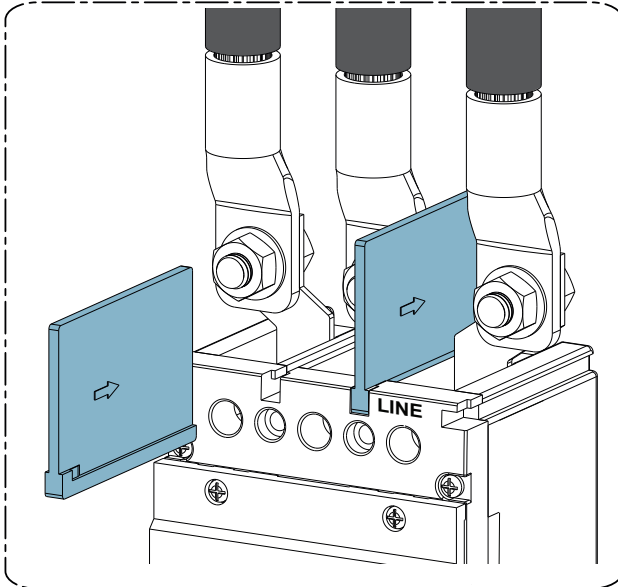
Assembly



DANGER

Hazardous voltage will cause death or serious injury. Turn off and lock out all power supply before working on this device. Replace all covers before power supplying this device is turned on.

Phase barriers

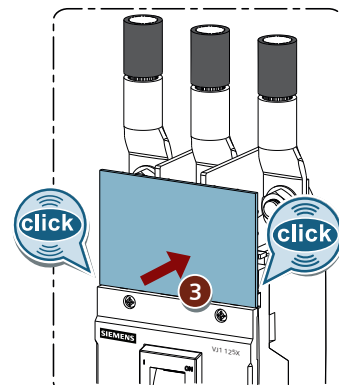
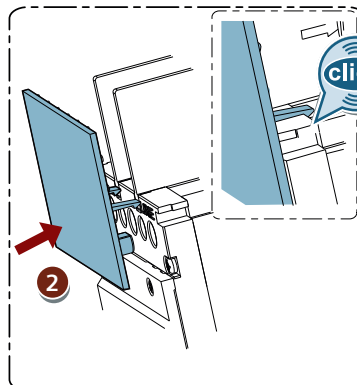
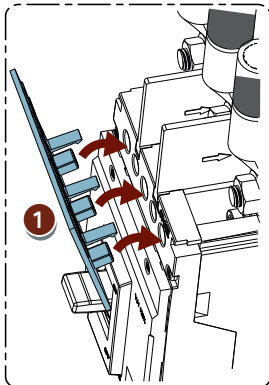


DANGER

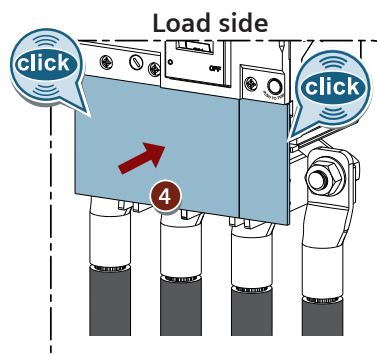
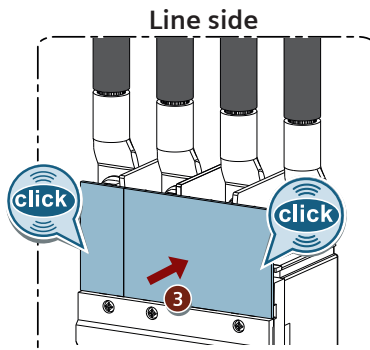
Hazardous voltage will cause death or serious injury. Turn off and lock out all power supply before working on this device. Replace all covers before power supplying this device is turned on.

Front barriers

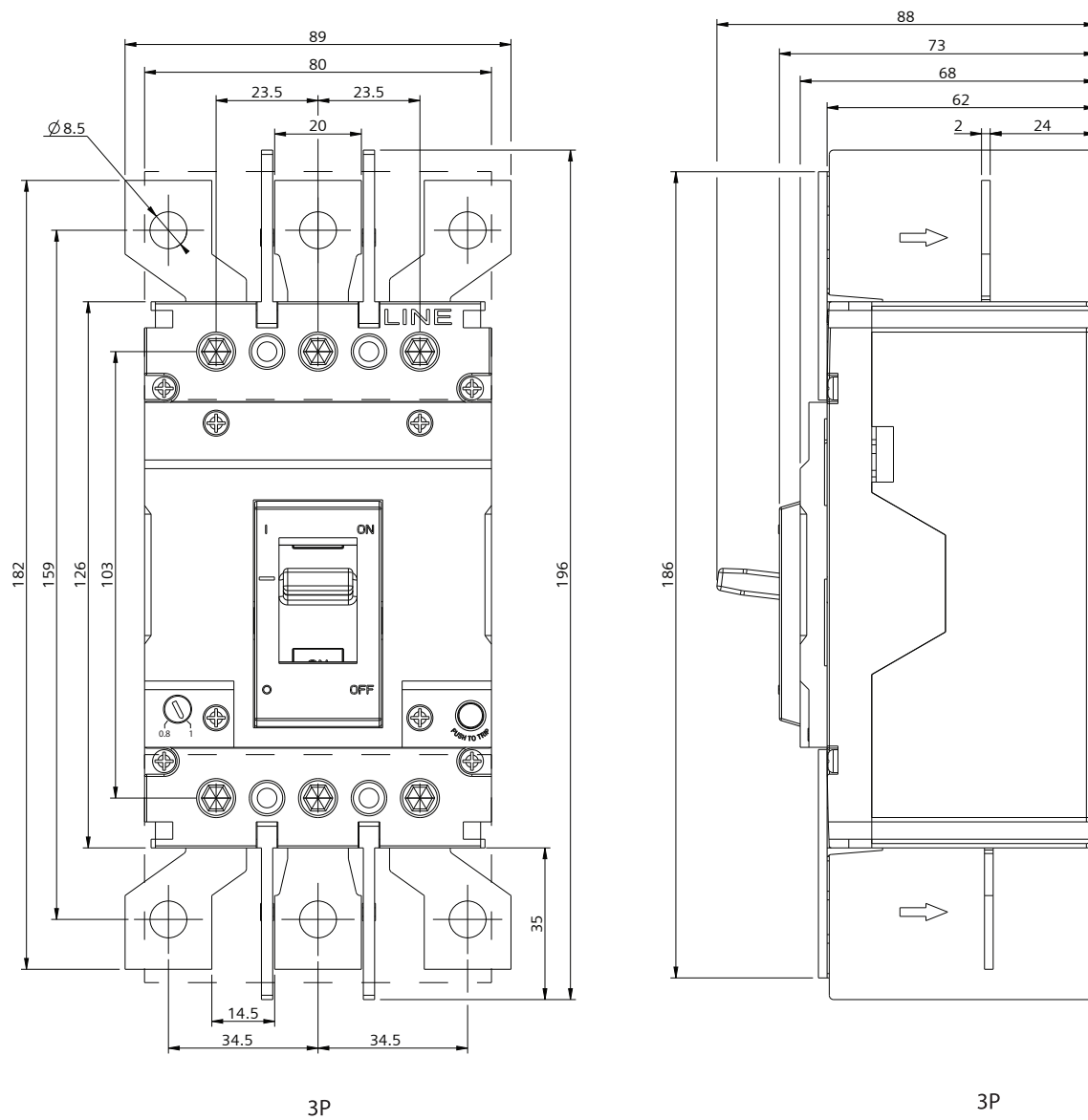
3P



4P



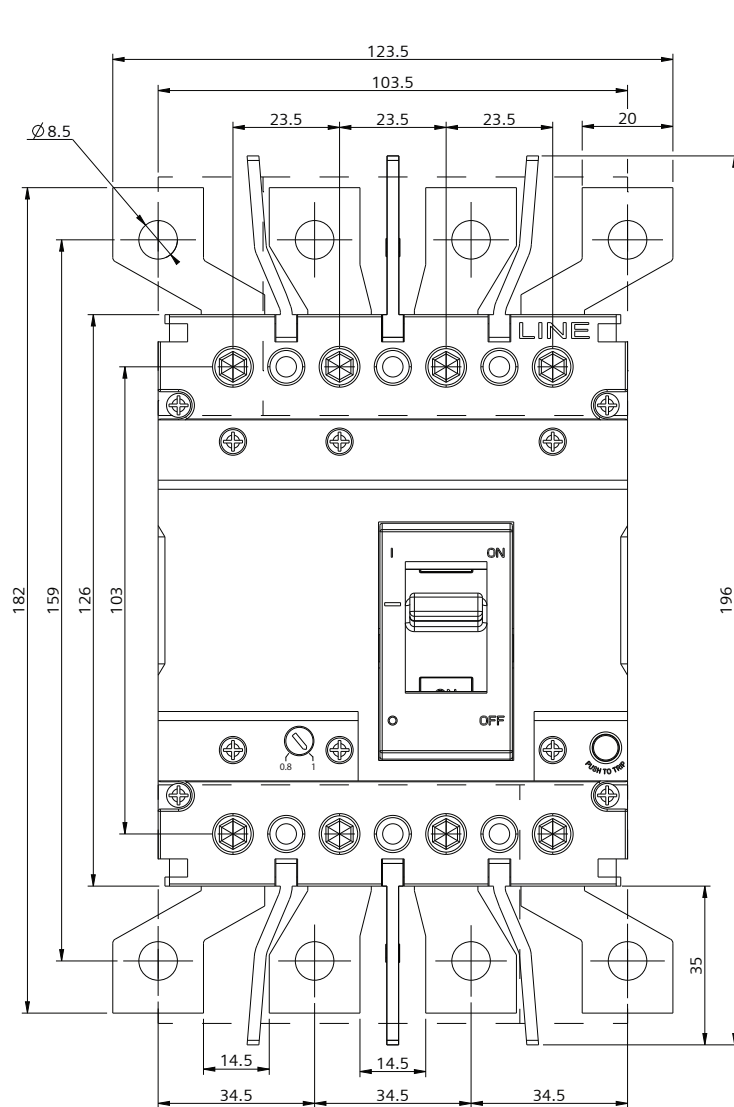
Ensure orientation as represented.



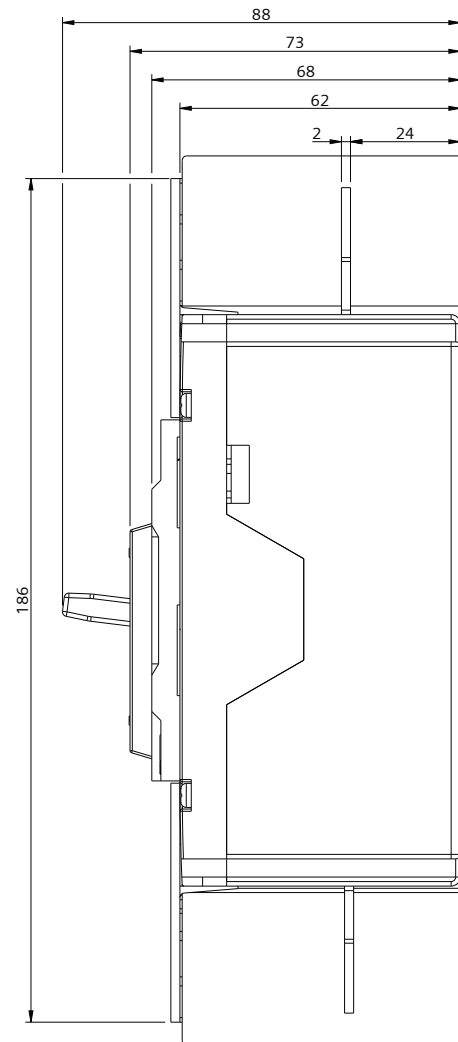
All dimensions are in mm



Information



4P

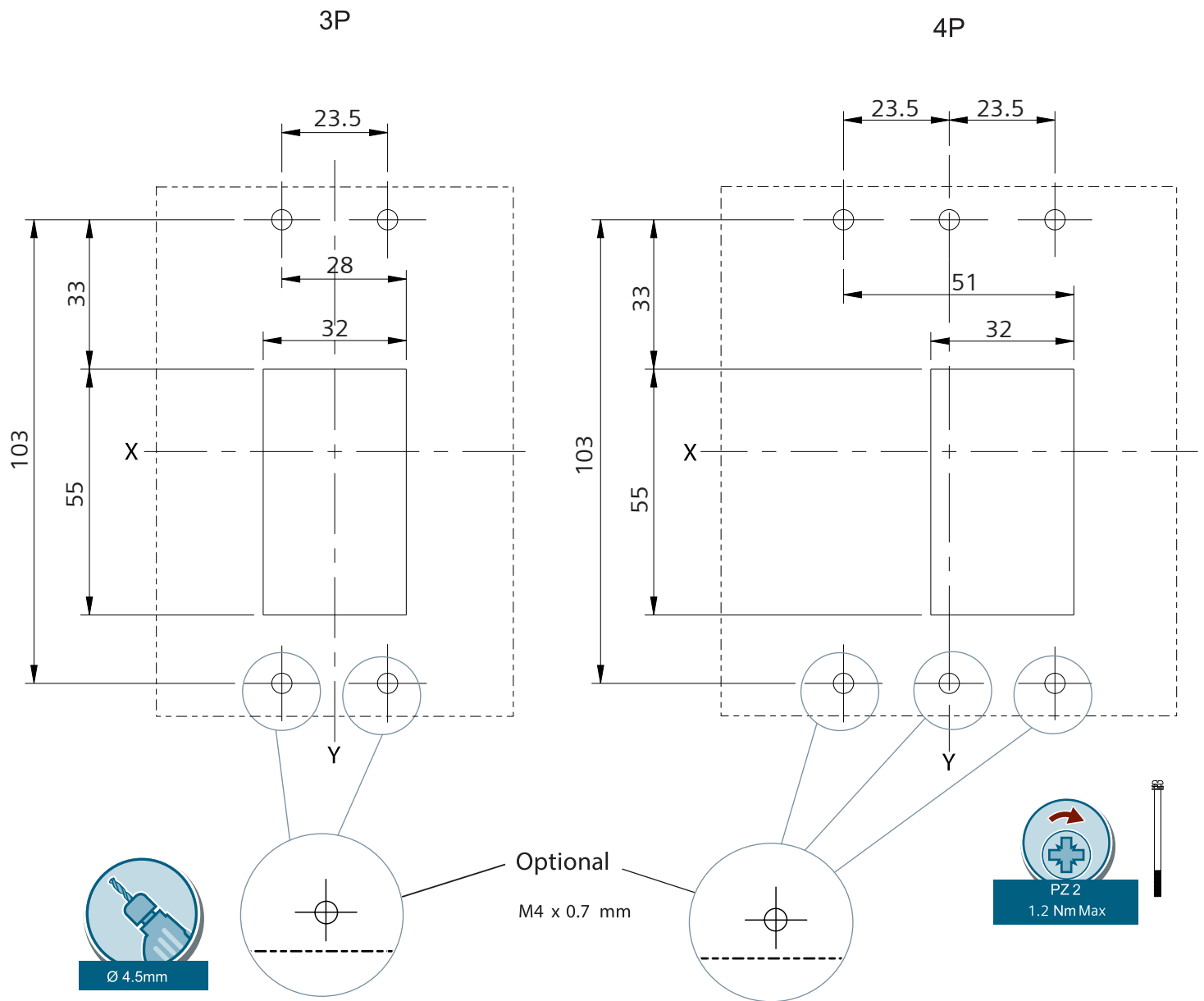


4P

All dimensions are in mm

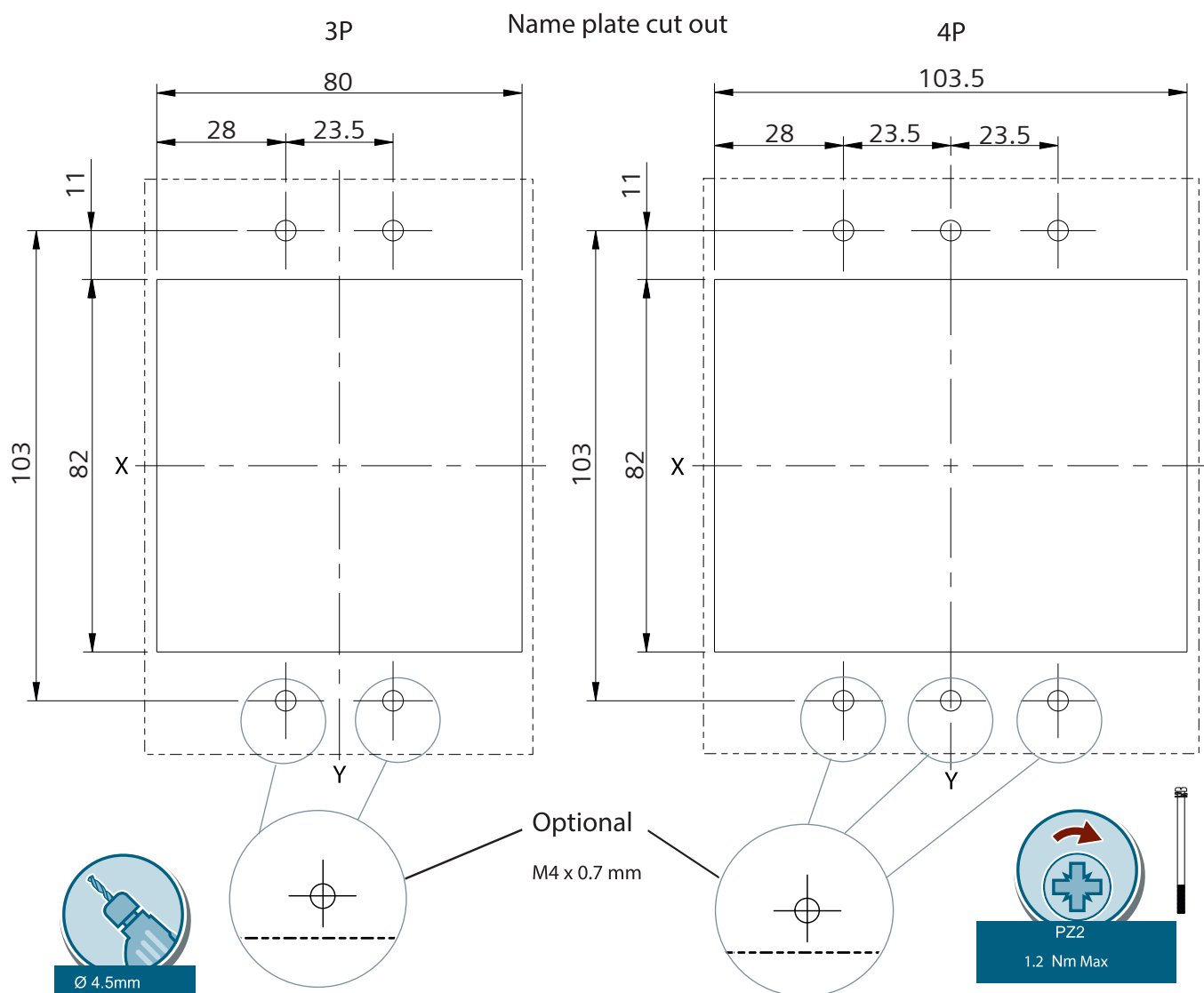


Knob cutout

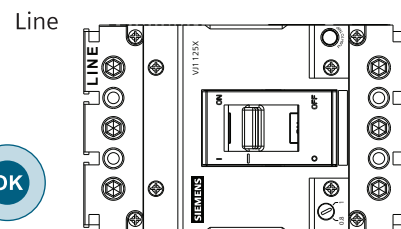
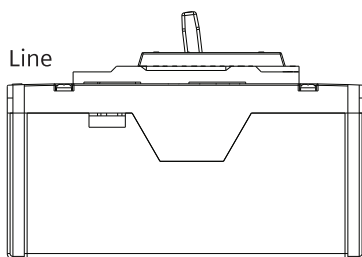
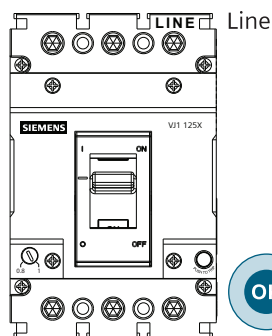




Assembly



Information



EN

NOTICE

These instructions do not purport to cover all details or variations in equipment, or to provide for every possible contingency in connection with installation, operation, or maintenance. Should additional information be desired, please contact the local Siemens sales office. The contents of this instruction manual shall not become part of or modify any prior or existing agreement, commitment, or relationship. The sales contract contains the entire obligation of Siemens. The warranty contained in the contract between the parties is the sole warranty of Siemens. Any statements contained herein do not create new warranties or modify the existing warranty.

Trademarks - Unless otherwise noted, all names identified by ® are registered trademarks of Siemens AG or Siemens Industry, Inc. The remaining trademarks in this publication may be trademarks whose use by third parties for their own purposes could violate the rights of the owner.