

## SIMATIC HMI

### WinCC V11 Readme WinCC Professional V11 SP2 Second Edition

Readme

Online help printout

## Legal information

### Warning notice system

This manual contains notices you have to observe in order to ensure your personal safety, as well as to prevent damage to property. The notices referring to your personal safety are highlighted in the manual by a safety alert symbol, notices referring only to property damage have no safety alert symbol. These notices shown below are graded according to the degree of danger.

<b>⚠ DANGER</b>
indicates that death or severe personal injury <b>will</b> result if proper precautions are not taken.

<b>⚠ WARNING</b>
indicates that death or severe personal injury <b>may</b> result if proper precautions are not taken.

<b>⚠ CAUTION</b>
with a safety alert symbol, indicates that minor personal injury can result if proper precautions are not taken.

<b>CAUTION</b>
without a safety alert symbol, indicates that property damage can result if proper precautions are not taken.

<b>NOTICE</b>
indicates that an unintended result or situation can occur if the relevant information is not taken into account.

If more than one degree of danger is present, the warning notice representing the highest degree of danger will be used. A notice warning of injury to persons with a safety alert symbol may also include a warning relating to property damage.

### Qualified Personnel

The product/system described in this documentation may be operated only by **personnel qualified** for the specific task in accordance with the relevant documentation, in particular its warning notices and safety instructions. Qualified personnel are those who, based on their training and experience, are capable of identifying risks and avoiding potential hazards when working with these products/systems.

### Proper use of Siemens products

Note the following:

<b>⚠ WARNING</b>
Siemens products may only be used for the applications described in the catalog and in the relevant technical documentation. If products and components from other manufacturers are used, these must be recommended or approved by Siemens. Proper transport, storage, installation, assembly, commissioning, operation and maintenance are required to ensure that the products operate safely and without any problems. The permissible ambient conditions must be complied with. The information in the relevant documentation must be observed.

### Trademarks

All names identified by ® are registered trademarks of Siemens AG. The remaining trademarks in this publication may be trademarks whose use by third parties for their own purposes could violate the rights of the owner.

### Disclaimer of Liability

We have reviewed the contents of this publication to ensure consistency with the hardware and software described. Since variance cannot be precluded entirely, we cannot guarantee full consistency. However, the information in this publication is reviewed regularly and any necessary corrections are included in subsequent editions.

# Table of contents

<b>1</b>	<b>General notes.....</b>	<b>5</b>
1.1	General notes.....	5
1.2	Notes on the installation.....	10
1.3	Use of communications processors.....	12
<b>2</b>	<b>WinCC Readme.....</b>	<b>15</b>
2.1	Security note.....	15
2.2	Notes on use.....	16
2.3	Migration.....	21
2.4	Special considerations for Windows 7.....	23
2.5	Engineering System.....	25
2.5.1	Screens and Screen Objects.....	25
2.5.2	Tags and connections.....	28
2.5.3	Alarm system and alarm displays.....	29
2.5.4	System functions and scripts.....	30
2.5.5	Recipes.....	31
2.5.6	User administration.....	31
2.5.7	Communication.....	32
2.6	Compiling and loading.....	37
2.7	Runtime.....	39
2.7.1	Notes on operation in Runtime.....	39
2.7.2	Notes on operation of panels in Runtime.....	40
2.7.3	Notes on operation of Runtime Advanced.....	40
2.7.4	Notes on operation of Runtime Professional.....	40
2.8	HMI devices.....	43
2.8.1	Notes on HMI devices.....	43
2.9	Add-ons.....	46
2.9.1	DataMonitor.....	46
2.9.2	WebNavigator.....	47
	<b>Index.....</b>	<b>49</b>



# General notes

## 1.1 General notes

The information in this readme file supersedes statements made in other documents.

Read the following notes carefully because they include important information for installation and use. Read these notes prior to installation.

### Contents

The readme contains the following information:

- Information that could not be included in the online help.
- The following additional information for V11 SP2 Second Edition:
  - Installation problems with virtual drives have been resolved.
  - The current Automation License Manager V5.1 SP1 Update 3 is integrated.

### Security settings

In order to operate the software packages in the TIA Portal, port 4410 for TCP must be entered as an exception in the Windows firewall during installation.

### Installing new .Net versions or .Net service packs

- Close the TIA portal before installing a new .Net version or a new .Net service pack on your programming device/PC.
- Restart the TIA portal only after successful installation of the new .Net version or the new .Net service pack.

### Notes on handling

- If a project in the list of projects last used is located on a network drive that is not connected, you may experience delays when opening the "Project" menu.
- When you insert a CPU, you may need to wait for some time if the project editor is open at the same time. This generally takes longer when you insert the first CPU in a newly created project. To be able to continue working more quickly, you should close the project editor before inserting a CPU.
- The message "Application is not responding" may appear in Windows 7 with functions that take a long time to run (loading the CPU for example). If this occurs, wait until the function has correctly finished.

1.1 General notes

- If you have installed a Microsoft mouse with IntelliPoint, you may find that it superimposes components over the buttons of the title bar. If this is the case, uninstall the IntelliPoint software from Microsoft.
- Enabling the "Virtual Desktop" options with NVIDIA graphics cards can cause problems. In this case, disable the "nView virtual desktop manager" of your NVIDIA graphics driver.

**Changes to keyboard shortcuts for menu commands**

To enable country-specific characters to be entered in TIA portal V11, the assignment of keyboard shortcuts to menu commands has been changed as follows (Ctrl+Alt is the same as AltGr):

Previously	Now	Menu command
<Ctrl+Alt+A>	<Ctrl+Shift+P>	Rewire tag
<Ctrl+Alt+B>	<Ctrl+Shift+M>	Set/delete bookmarks
<Ctrl+Alt+D>	<Ctrl+U>	Accessible devices
<Ctrl+Alt+F>	<Ctrl+M>	Cancel online connection
<Ctrl+Alt+G>	<Ctrl+Shift+Q>	Stop CPU
<Ctrl+Alt+I>	<Ctrl+Shift+I>	Define tag
<Ctrl+Alt+K>	<Ctrl+Shift+F>	Go to > Next point of use
<Ctrl+Alt+L>	<Ctrl+Shift+G>	Go to > Previous point of use
<Ctrl+Alt+N>	<Ctrl+Shift+U>	Rename tag
<Ctrl+Alt+O>	<Ctrl+K>	Going online
<Ctrl+Alt+R>	<Ctrl+Shift+Z>	Start Runtime
<Ctrl+Alt+T>	<Ctrl+Shift+E>	Start CPU

**Using the TIA Portal via a remote desktop**

In principle, it is possible to use the TIA Portal via a remote desktop connection. During configuration, you should, however, avoid disconnecting the connection to the desktop client. In rare cases, this can lead to the software user interface being blocked.

If you experience this blockage, follow these steps on the desktop client.

1. Open the Windows Task-Manager and close the "rdpclip.exe" process.
2. Type in "rdpclip.exe" in the command prompt to restart the process.

Note that the current content of the clipboard will be lost. You can, however, then continue configuration as usual. To be on the safe side, you should restart the TIA Portal at the next opportunity.

**Opening the TIA portal multiple times**

If you are running several applications of the TIA portal and they continually become active in turn, you can briefly switch to another application or use the key combination <ALT+Tab> to solve the problem.

## Note on SD cards

The SD cards have been formatted and initialized by Siemens for use with S7-1200 modules. This format must not be overwritten otherwise the card will no longer be accepted by the S7-1200 modules. Formatting with Windows tools is therefore not permitted.

## Behavior in case of open force job

Note that active force jobs will be retained even after you have loaded a new project to the SD card. This means you should first delete the active force job before you remove an SD card from the CPU and before you overwrite the card in the PC with a new project. If you use an SD card with unknown content, you should format the SD card before the next download.

## Issues when shutting down Windows XP or when activating a screen saver

Windows XP uses the ACPI (Advanced Configuration and Power Interface) to shut down the computer or to go to standby mode. It can happen that while the system is processing a newly installed tool that the screen saver is not activated by the ACPI or that after exiting the tool that Windows XP cannot be shut down properly.

If the TIA Portal is running, the Standby function of the computer is deactivated. To put the computer into Standby, you have to first exit the TIA Portal.

The following description shows several optional settings in the "Power Options Properties" you can use to set the Standby mode of the computer with the function "Hibernate":

1. In Windows XP, open the "Power Options Properties" by pointing at "Start > Settings > Control Panel > Power Options" and select the tab "Hibernate". Select the "Enable hibernation" check box.
2. Switch to the "Advanced" tab. In the "Power buttons" dialog, click the drop down list box under "When I close the lid of my portable computer:" and select the option "Hibernate".
3. Then click the drop-down list box under "When I press the power button on my computer:" and select the option "Shut down".
4. Click "Apply" and confirm the settings with "OK".
5. Afterwards, restart the PC.

If you experience problems shutting down the computer, make sure that the TIA Portal has closed completely.

1. In the shortcut menu, select the Task Manager from the shortcut menu on the Taskbar.
2. If you see the process "Siemens.Automation.ObjectFrame.FileStorage.Server.exe" in the "Processes" tab, wait until this process has closed.
3. Then you can shut down the computer.

## Subnet addressing for CP 1613 and CP 1623

CP 1613 and CP 1623 are communication modules with microprocessor. To ensure secure management of communication links, these are processed on the module. The protocol stack in your PC is used for diagnostic purposes (SNMP, DCP). To allow both protocol stacks (i.e. CP 1613/23 Firmware and CP 1613/23 NDIS access) access to the same partners, is recommended to place both stacks of a module in the same subnet.

## Editing a device IP address

Do not use the address range from 192.168.x.241 to 192.168.x.250 when editing a device IP address. If necessary, this address range is automatically assigned by the system to a programming device. Depending on the subnet mask, this applies also for all network classes.

## Migrating projects with the TIA Portal

After the migration of hardware configurations and program blocks from earlier automation solutions, first check the functionality of the migrated project before you use it in productive operation.

## Screen display

After long periods of work, it can happen in the case of certain computer configurations with Windows XP that parts of the TIA Portal interface are no longer updated. Reducing the graphic hardware acceleration can correct this problem. You can find the setting for this by clicking on the desktop and selecting "Properties > Settings > Advanced > Troubleshoot > Slider Hardware acceleration" by means of the right mouse button. In this dialog, move the slider "Hardware acceleration" gradually to the left and apply this setting until the contents of the screen are displayed correctly again.

## Tablet PCs

For the TIA Portal V11, tablet PCs are only released with the operating system Windows 7, not with Windows XP.

## SQL Server

During the installation of the SQL Server 2005 or the SQL Server 2005 Express, an error can occur if the product SQL Server 2008 is already installed on your system.

In order to be able to use both varieties of the SQL Server in parallel, the SQL Server 2005 must be installed before the SQL Server 2008. To do this, follow these steps:

1. Remove the SQL Server 2008 version, without deleting the databases.
2. Install WinCC. The SQL Server 2005 is hereby installed and set up on your system.
3. Install the SQL Server 2008 again. Now you can continue to use the databases already created in the SQL Server 2008.

## Working with automatically synchronized network drives

Automatic synchronization after a network interruption can result in current (local) project data being stored as a "backup" on the network drive through user interactions. This could cause outdated project data to be loaded from the network drive when opening the project. For this reason, we do not recommend that you store TIA Portal projects on synchronized network drives.

If, however, you do work on synchronized drives, you can continue working locally in the event of a network interruption. In this case, you must always ensure that the TIA Portal application



is closed while data is synchronized. The synchronization itself must be implemented in such a way that the current (local) project data replaces the project data on the network drive.

### **Entry of decimal places**

With certain Windows language settings, it may occur that the entry of values with a comma as decimal place is not recognised (entering "1,23" leads to an error). Instead, use the international format ("1.23").

### **FAQs on the TIA Portal**

FAQs on the TIA Portal are available at <http://support.automation.siemens.com> (<http://support.automation.siemens.com/WW/view/en/28919804/133000>).

### **See also**

Notes on the installation (Page 10)

## 1.2 Notes on the installation

### Contents

Information that could not be included in the online help.

### Target directory of the installation

Do not use any UNICODE characters (for example, Chinese characters) in the installation path.

### Installation of STEP 7 Basic V11 and STEP 7 Professional V11 under Windows XP with Turkish Regional and Language Options

Installation of STEP 7 Basic V11 and STEP 7 Professional V11 under Windows XP may be cancelled, if the regional and language options are set to Turkish. In this case change the regional and language options from Turkish to English or German.

1. Open the Control Panel under Windows with one of the following commands:
  - "Start > Control Panel" (Start menu under Windows XP)
  - "Start > Settings > Control Panel" (classic start menu)
2. Open the "Regional and Language Options".
3. Select the "Regional Options" tab.
4. Under "Standards and formats" select "German" or "English" in the drop-down list.
5. Click "Apply" and confirm with OK.
6. Restart your PC for the setting to become active. Now you can continue with the installation of STEP 7 Basic V11 and STEP 7 Professional V11.
7. After installation, you can revert the regional and language settings (as described in steps 1 to 4) to Turkish.

### Removing

In rare cases removal of the program can cause the computer to freeze, even when a full version of SQL Server 2005 is installed. In this occurs, disconnect the computer from the network to continue the removal process.

### Installation of the SIMATIC USB driver under Windows server 2003 R2 StdE SP2

An operating system message relating to the SIMATIC USB driver is issued on the operating system Windows Server 2003 R2 StdE SP2. This message must be acknowledged with "Yes" as soon as possible after the message has been issued. The message may be in the background and therefore may not be immediately visible. After a certain period of time, the setup continues with the next component. The SIMATIC USB drivers are then not installed and cannot be used.

### **Display of the desktop icon**

If you do not select the standard installation path during the installation of the TIA portal, the desktop icon may not be displayed correctly. This does not affect the functionality of the product.

## 1.3 Use of communications processors

### Contents

Information that could not be included in the online help.

### SIMATIC NET DVD for PC communications processors

The use of the SIMATIC NET DVD versions listed below is recommended for the following communications processors depending on the operating system:

- CP 1613
- CP 1613 A2
- CP 1623
- CP 5613
- CP 5614
- CP 5613 A2
- CP 5614 A2
- CP 5623
- CP 5624

The following versions of the SIMATIC NET DVD should be used with the stated operating systems:

- Windows 7 (Professional, Enterprise, Ultimate), 32- and 64-bit and Windows Server 2008 R2  
"SIMATIC NET PC Software" DVD V8.1 SP1
- Windows XP, Windows Server 2003 and Windows Server 2008, 32-bit.  
"SIMATIC NET, PC Software, Edition 2008 + SP4" CD, version number V7.1.4.

### Operation of communications processors

If both STEP 7 V5.5 and STEP 7 V11 are installed on a computer and STEP 7 V5.5 is removed, the setup repair function of STEP 7 V11 must be executed before the following communications processors can be used as network adapters for loading firmware:

- CP 561x
- CP 5613 A2
- CP 5614 A2
- CP 5623
- CP 5624
- CP 5711

**See also**

Service & Support (<http://support.automation.siemens.com/WW/view/en/12660737>)



# WinCC Readme

## 2.1 Security note

### Security information

Siemens offers IT security mechanisms for its portfolio of automation and drive products in order to support secure operation of the plant/machine. Our products are also continuously developed further with regard to IT security. We therefore recommend that you keep yourself informed about updates and upgrades for our products and always use the latest version of each product. For information on this topic, refer to: <http://support.automation.siemens.com> ([http://www.siemens.de/automation/csi\\_en\\_WW](http://www.siemens.de/automation/csi_en_WW)) You can register for a product-specific newsletter here.

For the safe operation of a plant/machine, however, it is also necessary to integrate the automation components into an overall IT security concept for the entire plant/machine which corresponds to the state-of-the-art IT technology. You can find information on this under:

<http://www.siemens.com/industrialsecurity>. (<http://www.siemens.com/industrialsecurity>)

Products used from other manufacturers should also be taken into account here.

## 2.2 Notes on use

### Contents

Information that could not be included in the online help.

### Parallel installation of WinCC V11 and other SIMATIC HMI products

The parallel installation of WinCC V11 with versions of WinCC flexible prior to WinCC flexible 2008 is not permitted.

The parallel installation of WinCC V11 with versions of WinCC prior to WinCC V7.0 SP2 is not permitted. The parallel installation of WinCC V11 with WinCC V7.0 SP2 or WinCC V7.0 SP3 is only permitted for:

- WinCC V11 Basic
- WinCC V11 Runtime Advanced

### Parallel installations in the TIA portal

You will be prevented from starting the TIA Portal if you perform a non-permitted parallel installation of STEP 7 and WinCC.

The following parallel installations are permitted in the TIA portal:

- STEP 7 V11 and WinCC V11
- STEP 7 V11 SP1 and WinCC V11 SP1
- STEP 7 V11 SP1 with WinCC V11 SP2
- STEP 7 V11 SP2 and WinCC V11 SP1
- STEP 7 V11 SP2 with WinCC V11 SP2

A dialog opens during installation to inform you of any inconsistencies in your parallel installation.

The following parallel installations are permitted:

- WinCC V11 and RT Advanced V11
- WinCC V11 and RT Professional V11
- WinCC V11 SP1 and RT Advanced V11 SP1
- WinCC V11 SP1 and RT Professional V11 SP1
- WinCC V11 SP2 and RT Advanced V11 SP2
- WinCC V11 SP2 and RT Professional V11 SP2

The Engineering System and Runtime must always be of the same version after an installation.



## Parallel use

If the term "Combo" appears in the name or license key of the software after installation, the use of the following products/versions is permitted in accordance with paragraph 1.6 of the General Terms and Conditions (see also setup text):

- WinCC flexible 2008 Standard

## Installation on a computer with regional setting "Turkish"

If the computer is operated with the regional setting "Turkish" at the time of the installation, WinCC Runtime Professional cannot be started.

## Copying HMI devices with HMI connections

If you copy an HMI device with HMI connections to a PLC, the HMI connection in the new HMI device will not automatically be connected to an existing PLC with the same name. This statement applies to copying within a project as well as copying across projects.

To access the PLC tag via HMI tag in the new HMI device, you will have to complete the HMI configuration immediately after the copying step. Proceed as follows:

1. Open the "Devices & Networks" editor.
2. Connect the new HMI device with the desired network.
3. Open the connection table.
4. Select the HMI connection of the new HMI device.
5. Select the desired PLC under "Partner".

If you compile the new HMI device or connect additional PLC tags in between copying the HMI device and completing the connection, there may be some instances in which you create an additional HMI connection to the same PLC. This is especially true if you connect HMI tags with DB array elements.

## Device replacement

After an HMI device has been replaced, you should check the appearance of the configured screens. Changing the size of the display may result in changes to the position and appearance of screen objects, e.g. recipe view and alarm view.

## Device replacement - character sets

If you have configured different character sets on screen objects for multilingual texts in the various project languages, you should check the screens after an HMI device replacement from a panel to a PC-based Runtime. The configured character sets may be changed by the device replacement.

## Device replacement - communication

If an HMI device is replaced, error messages of the type "... will not be supported in the new configuration. It will be removed" will be issued. These alarms refer to configured connections

of the device and are triggered, for example, if the HMI devices have a different number of interfaces. These connections are marked red after a device replacement. If you would like to continue to use these connections, you have change the configuration of the connection. Proceed as follows:

1. Open the "Devices and Networks" editor.
2. Click "Network" in the toolbar of the network view.
3. Network the interface of the HMI device with the interface of the CPU.
4. Click in the tabular area of the network view on the "Connections" table.
5. Select the connection marked red.
6. Enter the new interface under "Properties > Properties > General > Interface" in the Inspector window.

### Specifying the time of modification in the overview window

The times of modification displayed in the overview window only refer to changes to the object itself. Changes to subordinate objects, e.g. screen objects in a screen, do not cause the time of the last change to the screen to change in the overview window.

### HMI device wizard

When you create a device with a color display using the HMI device wizard, the graphics of the navigation buttons may be displayed in black and white. This error only occurs, however, if the new device is created with the same name as a device with a monochrome display which has been deleted in the meantime.

You can avoid this error by always deleting the associated graphics in the Graphics collection whenever you delete a device from the project.

### Objects with object references in the project library

Two copying methods can be used in WinCC flexible.

- With "simple copy" a WinCC flexible screen including an IO field, for example is copied. Only the object name of a tag configured on the IO field is copied, as this is a reference.
- With "copy", a screen, an IO field contained there and a tag configured on the IO field together with its properties are copied.

These two methods can also be used for storing an object in a library. Project libraries and the objects contained there are migrated during migration and can be used in WinCC.

In WinCC, however, only one copying method is available. With regard to tags, it functions like "simple copy" in WinCC flexible. With regard to graphics, graphics lists and text lists, it functions like "copy" in WinCC flexible.

If you stored objects with references to tags in a library in WinCC flexible, you must reconfigure the referenced objects when using them in WinCC.

## Reports with Asian character sets on Windows CE devices

If Asian character sets are displayed in an illegible manner in a report on a Windows CE device, you must change the character sets for the objects in the report. It is sufficient to change to a different character set and then reset the original character set.

## Saving the WinCC project

If you save a project in WinCC using the "Save As..." command, this has no effect on the names of the Runtime projects generated for Runtime Professional. If you do not adapt the target path of the devices in the "Extended download to device" dialog, the Runtime projects on the target devices will be overwritten. Configuration changes from the original project and configuration changes from the newly saved project may influence each other.

Therefore, change the target path of the devices in the "Extended download to device" dialog.

## Texts in the simulation

If a Runtime language which does not correspond to an installed product language is used in the simulation, system texts are shown in an installed product language. Depending on the operating system and the installed product languages, this will be either English or Chinese.

If you wish to see all texts in Japanese, Korean or Taiwanese in the relevant language in the simulation, you should first install WinCC without simulation. Then install WinCC Runtime Professional with the required languages.

## Invalid Runtime language

You may only select the Runtime languages for WinCC Professional that are compatible with the current settings on your PC. The setting is available in the Control Panel, "Regional and Language Options > Advanced > Languages for non-Unicode programs" dialog.

The default font is marked as invalid if you select an incompatible Runtime language in the "Runtime settings > Languages & font" editor.

## Security settings in the Security Controller

You can find the "Security Controller" in the start menu under "Start > Programs > Siemens Automation". You can display and print security settings using the program.

However, do not use "Edit > Make settings" and/or the function "Make setting" in the menu.

## Upgrading Runtime Professional V11 SP1 to Runtime Professional V11 SP2

If upgrading Runtime Professional V11 SP1 to Runtime Professional V11 SP2, remove the following selection from the installation dialog:

- Migration
- Runtime Advanced

On completion, you can select "Runtime Professional" in the installation dialog.

### Online delta-load with user-defined cycles

If you have configured new custom cycles in the "Cycles" editor, "Load > Software (compile all)" command when loading the project. Delta-loading is not possible in online mode.

### License transfer via S7USB

You always need to run WinCC to transfer a license to a panel via S7USB.

### Transferring licenses to a panel on 64-bit operating systems

If you are running a 64-bit operating system and the "Edit > Connect target systems > Connect HMI device" menu command is not available in Automation License Manager, open command line input and run the following command with administrator rights:

```
"%WINDIR%\system32\RegSvr32.exe" "%CommonProgramFiles%\siemens\AlmPanelPlugin\ALMPanelParam.dll"
```

### Hewlett-Packard keyboard driver

On HP notebooks, WinCC V11 SP2 leads to incompatibilities with the HP keyboard driver, possibly resulting in a blue screen. These incompatibilities are avoided by improving a driver within WinCC V11 SP2 Second Edition.

## 2.3 Migration

### Contents

Information that could not be included in the online help.

---

#### Note

The most efficient way to locate scripting errors in the course of the initial test run after migration is to use an installed Script Debugger and the diagnostics controls.

---

### Changing the names of alarm classes

In contrast to WinCC flexible, the names of the predefined alarm classes are not dependent on the user interface language currently in use. During migration, the names of the alarm classes are assigned as follows:

WinCC flexible	WinCC
Error	Errors
System	System
Warnings	Warnings

The display names of the alarm classes can be changed as necessary after migration.

### Project languages in WinCC

WinCC V11 does not support all project languages that were available in WinCC flexible, such as Arabic. If you receive an empty project as the result of your migration, you may want to check the set editing language. Do not set the project languages that are not supported as editing language in the source project. Proceed as follows:

1. Open the project with WinCC flexible.
2. Change the editing language to English, for example.
3. Save the project.
4. Restart the migration.

### Objects with object references in the project library

Two copying methods can be used in WinCC flexible.

- With "simple copy", a WinCC flexible screen including an IO field, for example, is copied. Only the object name of a tag configured on the IO field is copied, as this is a reference.
- With "copy", a screen, an IO field contained there and a tag configured on the IO field together with its properties are copied.

These two methods can also be used for storing an object in a library. Project libraries and the objects contained there are migrated during migration and can be used in WinCC.

## 2.3 Migration

In WinCC, however, only one copying method is available. It functions like "simple copy" in WinCC flexible.

If you have stored objects with references to other objects in a library in WinCC flexible, you must reconfigure the referenced objects when using them in WinCC.

### Migrating an integrated project with ProTool objects

The "PROTOOL option package(s) missing in STEP 7" error message output during migration of a WinCC flexible project that is integrated in STEP 7 indicates that WinCC flexible 2008 SP3 is installed on your system. Moreover, the project still contains objects that were configured using ProTool. Do not open the project with WinCC flexible 2008 SP3! Proceed as follows to migrate the project:

1. Copy the project to a computer on which WinCC flexible 2008 SP2 and STEP 7 are installed.
2. Open the project in the SIMATIC Manager.
3. Remove all ProTool objects from the project.
4. Execute the "Save as" command in the "File" menu.
5. Activate the option "With reorganization" in the "Save project as" dialog.
6. Click OK.
7. Copy the project back to the original computer.
8. Restart the migration.

### Migrating a WinCC V7 project with "Chinese (Taiwan)" Runtime language

If your WinCC is installed with support for the "Chinese" user interface language, the texts and report layouts of the "Chinese (Taiwan)" Runtime language will not be included when you migrate WinCC V7 projects. Migrate such projects using the Migration Tool, or a PC that contains a WinCC setup without "Chinese" user interface language.

### Progress bar

As long as the progress bar still shows a value of 100 %, the software is still busy running remaining tasks such as the closing of references. The software will not respond to user input while this status is given.

### See also

Object support during migration

## 2.4 Special considerations for Windows 7

### Contents

Information that could not be included in the online help.

### Permission for the starting Runtime

To start WinCC Runtime Professional or WinCC Runtime Advanced, a user must be a member of the automatically created group, "Siemens TIA Engineer".

### Working with standard user rights

If you are working with standard user rights in Windows 7, "User Account Control (UAC)" cannot be disabled.

The "User Account Control" is enabled in Windows 7 by default.

For more information on the "User Account Control", refer to the online help for Windows 7.

### Slow response from the screen keyboard and SmartServer

The following programs may start and respond very slowly under Windows 7 and Windows 2008 servers:

- Microsoft OSK screen keyboard and HMI TouchInputPC
- SmartServer: <Ctrl+Alt+Del> shortcut in the logon dialog

The delay is caused by the callback for the Internet certificate validation.

Remedy:

Locate the following files on the product DVD under:

Support\Windows7\CRL\_Check or CD\_RT\ Support\Windows7\CRL\_Check\  
:

- DisableCRLCheck\_LocalSystem.cmd
- DisableCRLCheck\_CurrentUser.cmd

1. Run the "DisableCRLCheck\_LocalSystem.cmd" file with administrator rights. Select the command "Run as administrator" from the shortcut menu of the file.
2. Reboot the PC.

If the problem persists, follow these steps:

2.4 Special considerations for Windows 7

1. Double-click the file and run the "DisableCRLCheck\_CurrentUser.cmd" file with user rights.
2. Reboot the PC.

**NOTICE**

The callback for the certificate validation is disabled for all users or PCs. To restore the original state, perform the following files:

- RestoreDefaults\_LocalSystem.cmd
- RestoreDefaults\_CurrentUser.cmd

You can find the files in the following directory of product DVD:

- Support\Windows7\CRL\_Check bzw. CD\_RT\Support\Windows7\CRL\_Check\



## 2.5 Engineering System

### 2.5.1 Screens and Screen Objects

#### Contents

Information that could not be included in the online help.

#### Text format of output fields in alarm text

It is not possible to underline tags and text list entries.

#### Copying display objects between two projects or two devices

In Project\_1 configure an alarm window in the Global Screen, for example. You copy the alarm window and paste it in the Global Screen in Project\_2.

The enabled alarm classes are partly not enabled in the alarm window after pasting.

This behavior applies to the following display objects:

- Alarm window
- Alarm indicator
- Alarm view

#### Representation of the cross-references in the Inspector window

The Inspector window displays objects used by a screen object in the "About > Cross-reference" tab.

A screen is open and an object selected. You are using an HMI tag at the object as process tag.

The object and the linked HMI tag are displayed in the cross-references. All locations of use of the object and the HMI tags are listed.

If the HMI tag is interconnected with a PLC tag or a DB tag, then the locations of use of the interconnected PLC tag or DB tag will be displayed.

#### Event names in case of alarms in the "Info" tab of the Inspector window

In some alarms of the Inspector window the event names in the "Info" tab will deviate from the names in the "Properties" tab.

Name in the "Properties" tab of the Inspector window	Name in the "Info" tab of the Inspector window
Cleared	ClearScreen
Loaded	GenerateScreen

Name in the "Properties" tab of the Inspector window	Name in the "Info" tab of the Inspector window
Enable	Activate
Change	Change
When a dialog is opened	ONMODALBEGIN
When a dialog is closed	ONMODALEND
User change	PASSWORD
Screen change	SCREEN
Disable	Deactivate
Press	Press
Outgoing	Going
Incoming	Coming
Limit "high limit error" violated	AboveUpperLimit
Limit "low limit error" violated	BelowLowerLimit
Click	Click
Loop-In-Alarm	LoopInAlarm
Release	Release
Alarm buffer overflow	OVERFLOW
Acknowledge	Acknowledgement
Runtime stop	Shutdown
Press key	KeyDown
Release key	KeyUp
Switch ON	SwitchOn
Switch OFF	SwitchOff
Value change	Change value

### Dynamization of object properties in a group

The dynamization of properties for all objects of the group which have these properties is not possible in a group. In WinCC V11, the properties of the objects belonging to a group can only be dynamized for each object itself.

### Illegible characters in Runtime Professional

With Runtime Professional, only characters belonging to the language area which is defined with the operating system setting "Language for non-Unicode programs" can be displayed on the target system. Texts with characters from other language areas can, however, also be configured in the project.

Illegible characters may occur in the Engineering System with the objects text field, symbolic I/O field, gauge and slider if the settings in the operating system relating to "Language for non-Unicode programs" do not match the selected editing language and the objects are displayed in a different design than "WinCC Classic". The characters are displayed correctly in the Inspector window and the "Project texts" editor.

Therefore, first check in the Control Panel under "Regional and Language Options > Advanced" whether the setting for "Language for non-Unicode programs" is the same as the editing

language. Otherwise, you can check or change the correct texts in the Inspector window or the "Project texts" editor.

## Faceplates

Faceplates cannot be rotated or mirrored.

## Persistence with display objects in WinCC Runtime Professional

The objects f(t)-trend view, f(x)-trend view, alarm view, recipe view, table view and value table have settings for the persistence of online configurations. If you have configured "Persistence" for "Online configuration" and "Keep changes" for "Reaction to screen change", you can make changes to the configuration dialogs in runtime which will be retained after a screen change and after runtime is exited.

However, online configurations for the settings mentioned cause changes to the configuration of the objects in the Engineering System to only be applied in Runtime if you recompile the device with the command "Compile > Software (rebuild all)".

## Basic Panels, OP73, OP77A and TP177A: Displaying texts in runtime

The default font selected in the "Runtime settings > Languages & font" editor has an effect on the display of texts in runtime.

Text entries may be truncated if you selected an unfavorable font size or style.

This setting possibly has an effect on the following text entries:

- Tooltips
- long alarm text
- text in the dialogs

## Tab sequence in screens with faceplates

If you configured a tab sequence in screens with faceplates in WinCC V11 or WinCC V11 SP1, you should check the tab sequence of these screens in WinCC V11 SP2. The tab sequence may have been changed in both the screen and the faceplate.

## Tag prefix of a screen window in WinCC Runtime Professional

The objects of the "Controls" palette do not support the tag prefix that can be configured for a screen window.

## I/O field with "decimal" display format and format pattern without "s" prefix

You have linked a process tag to an I/O field. The I/O field is assigned the "decimal" display format.

You may select a signed or an unsigned display format.

A "Display format" setting without "s", e.g. "999" has the following effects:

1. You cannot set negative values using the I/O field in Runtime.
2. If the tag assumes a negative value, the I/O field generates a two's complement and a corrupted positive value is output.

### Trend view on Basic Panels

The trend view buttons are not displayed on Basic Panels. You can operate the trend view using the function keys of the HMI device that are assigned corresponding system functions.

## 2.5.2 Tags and connections

### Contents

Information that could not be included in the online help.

### Tag names

HMI tag names may not start with the character @.

### Display of deleted array elements at location of use of HMI tags

The locations of use of HMI tags, such as the process value of IO fields, are usually indicated by the tag name. If the element of an array tag is used, then the tag name will be extended by the index of the array element indicated in brackets.

If a used tag is no longer included in the project, then the tag name will still be displayed at the location of use. The field will be displayed with a red background to indicate the missing tag. If a used array element or the array tag is no longer present, then only the index of the array element will be displayed in brackets. The tag name will not be displayed. The field is highlighted in red. You can no longer identify the name of the associated array tag based on the location of use in this instance.

If you do not know which array tag was linked to this location of use, then it may be necessary to link the array element once again.

If a tag or array tag was created based on a reference, then the selected reference will be closed automatically.

If an HMI tag is connected with an array element of a PLC tag and the PLC tag does no longer exist in the project, then the same behavior will take place in the "HMI tags" editor.

### Array tags as list entry of multiplex tags

You can use the array tags of the Char data type just like the tags of the String data type.

The use of an array tag of the Char data type as list entry of a multiplex tag in the "HMI tags" editor is not supported.

## Multiplexing tags on a Basic Panel

If you multiplex a tag with an external tag on a Basic Panel, the address is read from the PLC in runtime during the first read cycle. The value of the address read is not available until the second read cycle.

## Runtime Advanced and Panels: Importing array elements and structure elements

Array tags and structure tags are always imported in full with all elements. The elements of the array tags and structure tags are not filled further during import.

A new tag is created if the name of a tag corresponds to the name of an array or structure element in the import file.

Example:

The import file contains an array tag called "Otto" with 10 array elements. The array elements are then called Otto[1], Otto[2], for example.

If the import file contains a tag called "Otto[1]", the first element of the array tag will not be filled. Instead, a new tag will be created in the Engineering System.

## Local ID of HMI connections

You cannot edit the "Local ID" value in the HMI connection properties. You need the local ID, for example, for communication by way of AR\_SEND. To enable usage of the "Local ID" for communication, proceed as follows:

1. Open the network view in the "Devices & Networks" editor.
2. Click "Connections".
3. Select an S7 connection.
4. Select the "Add new connection" command in the shortcut menu of the PLC.
5. Click on the interface.
6. Specify the "Local ID (hex)".
7. Click "Add" and then "Close".
8. Select "Properties > General" from the partner area of the Inspector window and enter the IP address of the HMI device for the new connection.
9. Configure the necessary raw data tags for communication in the HMI device.

## 2.5.3 Alarm system and alarm displays

### Contents

Information that could not be included in the online help.

### Displaying special characters in alarm texts

When configuring alarm texts, a fixed character set is used in the Engineering System. This character set allows you to use numerous special characters in alarm texts.

Language-dependent fonts are used in runtime to display the texts, for example MS P Gothic, SimSun. The fonts used in runtime do not support all special characters. As a result, some special characters are not displayed in runtime.

### Use of multiplex tags in output boxes with alarm texts

In the engineering system, it is also possible to use multiplex tags in the output boxes of alarm texts. During runtime, this leads to an incorrect display of the alarm, because the use of multiplex tags is not supported by the basic panels.

## 2.5.4 System functions and scripts

### Contents

Information that could not be included in the online help.

### Debugging using the Microsoft Script Debugger

If you want to use the Microsoft Script Debugger for debugging, the English version "scd10en.exe" must be used. The German version "scd10de.exe" cannot be installed.

### The "SimulateTag" system function on Basic Panels

If you use the system function "SimulateTag" with a short cycle time on a Basic Panel, the HMI device may be overloaded.

### System function "ClearDataRecordMemory"

System function "ClearDataRecordMemory" can only be used to delete recipe records. You cannot use the function to delete recipes.

### Runtime error on startup on TP 277 and OP 277

At the start of the runtime on a TP 277 or OP 277, the error "Global unknown error with VBScript: 'Expected statement' in script ..". can be reported.

This error is triggered on devices with the Windows CE 3.0 operating system by user functions of the following type:

---

```
Sub VBFunction_1()  
With HmiRuntime.Screens("Screen_1").ScreenItems("Button_1")
```

```
.backcolor = vbred  
.visible = not .visible  
End With  
End Sub
```

If the error occurs, you need to re-program the user function as follows:

```
Sub VBFunction_1()  
HmiRuntime.Screens("Screen_1").ScreenItems("Button_1").backcolor = vbred  
HmiRuntime.Screens("Screen_1").ScreenItems("Button_1").visible = not .visible  
End Sub
```

### Hiding warnings for scripts

Activate "Runtime settings > General > Settings > Also start with faulty scripts".

As a result, Runtime is started irrespective of faulty scripts. In addition, script warnings will not be displayed during a complete compilation

### Runtime API functions MSRTDialogFilterPlus and MSRTDialogCommentPlus

The API functions MSRTDialogFilterPlus and MSRTDialogCommentPlus described in the Online Help cannot be used.

## 2.5.5 Recipes

### Contents

Information that could not be included in the online help.

## 2.5.6 User administration

### Contents

Information that could not be included in the online help.

### SIMATIC Logon for WinCC Runtime Advanced and Panels

When you use SIMATIC Logon to manage access to a panel or a device with WinCC Runtime Advanced, you must note that the characters [/] and [\] cannot be used in the names of Windows user groups or Windows users.

## 2.5.7 Communication

### Content

Information that could not be included in the Online Help.

### Opening projects in WinCC V11 (no service pack) with communication via Modicon Modbus RTU, Modicon TCP/IP, Allen Bradley DF1

The following HMI devices are affected:

- OP 77A
- TP177 A
- Basic Panel

A Modicon Modbus RTU, Modicon Modbus TCP/IP, or Allen Bradley DF1 connection you configured in WinCC for one of the devices mentioned above will be invalid after it has been opened. You need to reassign the protocol in WinCC V11 SP2.

If you reassign the protocol in the "Connections" editor in WinCC, the tag address assignments will possibly get lost.

You can prevent the loss of tag address assignments as follows:

1. Create a new connection with this protocol and the relevant CPU type in the "Connections" editor.
2. Replace the original connection with the new one in the "Tags" editor.
3. Reconfigure the area pointers.
4. Assign the new connection to all functions that you are possible using, e.g. "set connection mode".
5. Delete the original connection in the "Connections" editor.

### Connection interruptions with Mitsubishi PLCs

After multiple connection interruptions, a situation may arise where all the connection resources of the Mitsubishi PLC are in use and the connection can no longer be established. It is recommended to check these connection resources in the PLC program of the PLC and also enable them again.

### Area pointer "Date/time" or "Date/time PLC"

If you use the area pointer "Date/time" or "Date/time PLC" in communication with an S7-1200, you must use data type "DTL" in the configuration of the PLC.

### Accuracy of the "DTL" data type

The "DTL" data type supports time information down to the nanosecond range. Because panels only support time information down to the millisecond, you will encounter the following restrictions when using the area pointers:



- Area pointer "Date/time"  
For the transmission of time information from a panel to the PLC, the smallest unit of time is 1 millisecond. The value range from microseconds to nanoseconds of the "DTL" data type will be filled with zeros.
- Area pointer "Date/time PLC"  
For the transmission of time information from a PLC to a panel, the range from microseconds to nanoseconds will be ignored. The time information will be processed on the panel down to milliseconds.

### Limited number of possible HMI connections

An error message is displayed during compilation of a device indicating that the configuration of the HMI connection in the "Devices & Networks" editor is invalid. The reason may be that the maximum number of possible connections of the HMI device or PLC has been exceeded.

Check the maximum number of available connections. Consult the device manuals of the devices you are using.

### Routed communication with S7 300/400

The communication of connection partners in various subnets can be routed via the following links: PROFINET, PROFIBUS, MPI.

### Using PROFINET IO with panel HMI devices

When using PROFINET IO to connect the direct keys and LEDs of HMI devices to the PLC, you can define an offset for the address area of the inputs and outputs during configuration in HW Config.

The following restriction applies when you use a PROFINET IO-capable CPU of the 400 series with one of the HMI devices listed below:

The offset for the start of the address area of the inputs must not be bigger than the offset for the start of the address area of the outputs.

The restriction applies to the following HMI devices:

- OP 177B
- OP 277
- Mobile Panel 177

For the configuration of the address parameters, open the PLC with the CPU of the 400 series in HW Config. Select the HMI device connected via PROFINET IO in the station window of HW Config. A table with the properties of the HMI device is displayed at the bottom of the station window in the detail view. Select the line containing the addresses of the HMI device in the table and open the object properties using the shortcut menu.

Select the "Addresses" tab in the "Object properties" dialog. Configure the offset for the inputs under "Inputs > Start". Configure the offset for the outputs under "Outputs > Start".

### Exceeding value ranges with Mitsubishi MC and Mitsubishi FX

With some data types, the communication drivers Mitsubishi MC and Mitsubishi FX do not check whether the value of a recipe tag exceeds the value range of the PLC tags. The data types affected are:

- 4-bit block
- 12-bit block
- 20-bit block
- 24-bit block
- 28-bit block

### Area pointer Coordination in an OPC connection

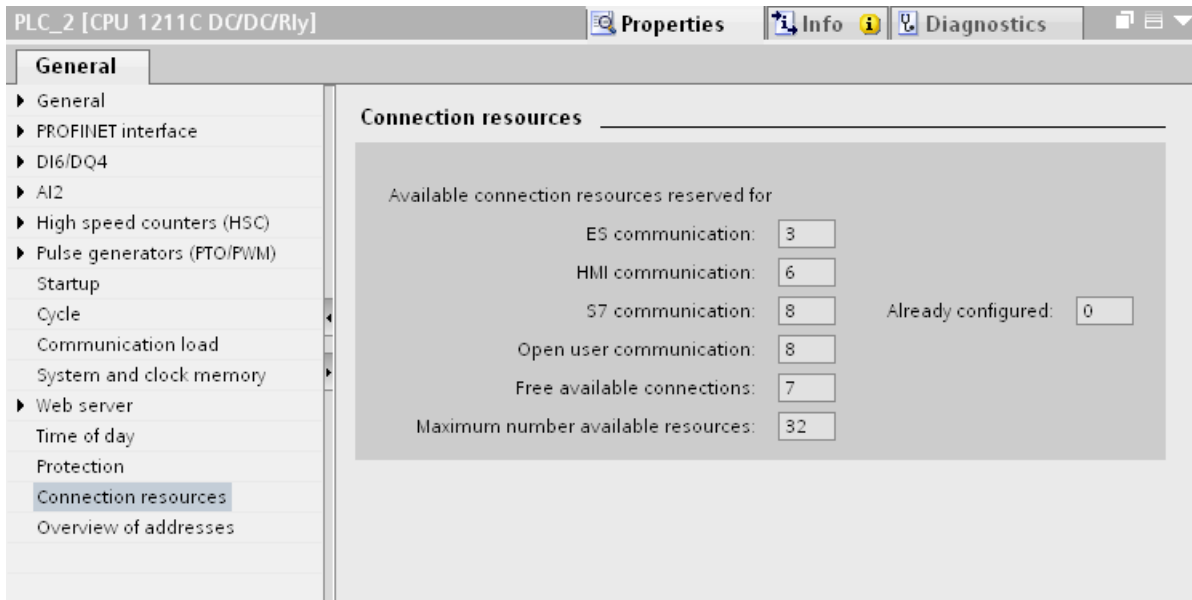
In principle, the area pointer Coordination can be used eight times in an OPC connection. If you have configured an OPC connection and automatically create another OPC connection using "Add", the area pointer Coordination is only displayed once in the newly created connection. In this case, you should change the communication driver of the connection. If you then set OPC again as the communication driver, the area pointer Coordination can again be used eight times.

### Communication resources: SIMATIC S7 1200

The SIMATIC S7 1200 controller provides six communication resources for HMI communication.

The number of HMI connections that you can actually configure depends on the HMI devices that you connect with the SIMATIC S7 1200.

- One HMI Panel occupies one communication resource per connection.
- One RT Advanced occupies one communication resource per connection.
- One RT Professional occupies two communication resources per connection.



### RT Advanced communication via Station Manager (SIMATIC NET) with an S7 1200

For routed communication of a SIMATIC S7 1200 with a PC with WinCC RT Advanced, the following restrictions apply for the PC:

- Windows 7: Only with installed SIMATIC NET 8.1
- Windows XP: Communication via Station Manager (SIMATIC NET) is not supported

These restrictions also apply if you are using WinAC MP or Station Manager. Connections with the help of the Station Manager of Runtime Advanced are always treated as routed connections.

### Communication between S7-1200 and a multi panel

Communication between an S7-1200 and a multi panel with the "WinAC MP" option installed via ProSave is not possible. The HMI devices affected are:

- SIMATIC MP 177 6" Touch
- SIMATIC MP 277 8" Touch
- SIMATIC MP 277 8" Key
- SIMATIC MP 277 10" Touch
- SIMATIC MP 277 10" Key
- SIMATIC MP 377 12" Touch
- SIMATIC MP 377 12" Key

- SIMATIC MP 377 15" Touch
- SIMATIC MP 377 19" Touch

## 2.6 Compiling and loading

### Contents

Information that could not be included in the online help.

### Compiling and loading

If internal errors or warnings occur during compiling, compile the complete project using the command "Compile > Software (rebuild all)" in the shortcut menu of the HMI device.

Before you start productive operation with your project, compile the entire project using the "Compile > Software (rebuild all)" command from the shortcut menu of the HMI device.

If you are using HMI tags that are connected to the control tags in your project, compile all modified blocks with the command "Compile > Software" in the shortcut menu before you compile the HMI device.

### Saving the WinCC project

If you save a project in WinCC using the "Save As..." command, this has no effect on the name of the Runtime projects generated for the devices. If you do not adapt the target path of the devices in the "Extended download to device" dialog, the Runtime projects on the target devices will be overwritten.

### Settings for update of operating system

If you select the command "Online > HMI device maintenance > Update operating system" from WinCC, you cannot change the settings such as the type of PG/PC interface or baud rate. The settings used during the last download are always used.

To make changes to the settings, open the "Extended download" dialog using the "Online > Extended download to device" command and change the settings. When you click the "Load" button the changed settings are saved.

Alternatively, you can perform an update of the operating system with changed settings with ProSave. You start ProSave via the Windows Start menu "Siemens Automation > Options and Tools > HMI Tools > SIMATIC ProSave".

### Incorrect installation of ProSave

If you receive an error message during installation of ProSave when loading data to a target device or maintenance of an HMI device, then you cannot remedy this error using the repair function of setup. Remove ProSave via the Control Panel. Then start setup and install the "ProSave" component again.

### Checking the address parameters

During compilation of an HMI device in the project tree with the command "Compile > Software" in the shortcut menu, the address parameters of the HMI device, such as the IP address, will

## 2.6 Compiling and loading

not be checked. If you want to ensure that the address parameters are checked as well, you will have to compile the HMI device in the "Devices & Networks" editor of the toolbar.

### Error message when downloading data to the PLC

A panel and a PLC are connected and communicating with other.

If a tag is accessed while downloading data from the panel to the PLC, an error message is displayed on the panel.

### Delayed reaction in the "Extended download to device" dialog

If the settings in the "Extended download to device" dialog for "Type of the PG/PC interface" and "PG/PC interface" do not match the settings on the HMI device, this can result in the application not responding for up to a minute.

### Extended download with an S7-1200 and a Comfort Panel

An S7-1200 PLC and a Comfort Panel are located in the same physical network as the PG/PC. You open the "Extended download to device" dialog for the Comfort Panel.

If you activate the option "Show all accessible devices", it may occur that the application stops responding.

### OP77A, OP73, TP177A: Loading projects

When loading a project to an HMI device, it can happen that Runtime is not automatically ended, even though "Remote Transfers" is activated in the Panel.

If this happens, stop Runtime and manually set the transfer mode on the HMI device.

### Loading a SIMATIC HMI application to a PC station

The following circumstances can lead to an error message during the first load of a SIMATIC PC station:

- A SIMATIC HMI application is configured in a PC station in the project
  - WinCC Runtime Advanced
  - WinCC Runtime Professional
  - WinCC Standby
  - or WinCC Client
- The property "S7RTM is installed" is activated.

Before you load a SIMATIC PC station for the first time, select the configured device HMI\_RT (WinCC...) in the project navigation. Open the "Extended download to device" dialog and select the appropriate interface and parameter settings. Click "Load".

You then load the PC station as normal.

## 2.7 Runtime

### 2.7.1 Notes on operation in Runtime

#### Contents

Information that could not be included in the online help.



#### **CAUTION**

##### **Ethernet communication**

In Ethernet-based communication, end users themselves are responsible for the security of their data network. The proper functioning of the device cannot be guaranteed in all circumstances; targeted attacks, for example, can lead to overload of the device.

#### **Special characters in the user view**

Special characters, such as / " § \$ % & ' ?, are not permitted when entering a name or the password in the user view.

#### **Language behavior - Layout of screen keyboard**

The layout of the screen keyboard is not switched when the runtime language changes.

#### **Tag values exceed the maximum length**

You enter a character string in a string tag via an I/O field. If the character string exceeds the configured number of tags, the character string will be shortened to the configured length.

#### **Empty message texts**

Runtime is running with a project. The project is saved on a network drive.

In the event of interruptions to the network drive connection, Runtime may attempt to load message texts from the network drive.

In the event of disconnection, the alarm window or the alarm view remains empty.

To avoid this, copy the project to a local drive before the starting the project in Runtime.

#### **Hewlett-Packard keyboard driver**

On HP notebooks, WinCC V11 SP2 leads to incompatibilities with the HP keyboard driver, possibly resulting in a blue screen. These incompatibilities are avoided by improving a driver within WinCC V11 SP2 Second Edition.

## 2.7.2 Notes on operation of panels in Runtime

### Contents

Information that could not be included in the online help.

### Using the mouse wheel in Runtime

The use of the mouse wheel in Runtime is not supported on all panels.

## 2.7.3 Notes on operation of Runtime Advanced

### Contents

Information that could not be included in the online help.

### .Net-Controls in Runtime

If you have incorporated a .Net Control in your project as "Specific .Net-Control", you have to copy the files belonging to these controls to the installation directory of WinCC Runtime, e.g. "C:\ProgramFiles\Siemens\Automation\WinCC RT Advanced". Otherwise, the control cannot be loaded in Runtime.

## 2.7.4 Notes on operation of Runtime Professional

### Contents

Information that could not be included in the online help.

### User authorizations within the operating system

1. All user must be added to the "SIMATIC HMI" user group. This also applies to users who want to open WinCC projects remotely.
2. The storage folders of the projects must have the NTFS authorizations "SIMATIC HMI" with full access and "SIMATIC HMI Viewer" with read access. The authorizations must be inherited for all subordinate objects.
3. Members of the Windows user group "SIMATIC HMI" should not simultaneously be members of the Windows user group "SQLServer2005MSSQLUser\$<Computername>\$WINCC". The members of this group have administrator rights to the SQL server. Therefore remove all Windows users from this group for whom restricted access to the WinCC database is sufficient.



## Windows 7 / Windows Server 2008: Locking key combinations

If you want to lock key combinations under Windows 7 or Windows Server 2008, you must change the group policies in the administrative tools of the operating system

A detailed description of this can be found in the FAQ with the entry ID "44027453" in the SIMATIC Customer Online Support:

Internet: WinCC FAQ 44027453 (<http://support.automation.siemens.com/WW/view/en/44027453>)

## Undocked toolbars

If the setting "Always on Top" is used for the Windows taskbar, undocked toolbars can be hidden behind the Windows taskbar in Runtime. Follow the steps below to show the toolbars again:

1. Select the "Properties" command in the shortcut menu of the taskbar.
2. Deselect "Keep taskbar on top of other windows".

## Fault in the connection between the server and the client

If the connection between the server and client is faulty, check the settings of the PG/PC interface. TCP/IP(Auto) should not be used for the "Interface Parameter Assignment Used". Used fixed IP addresses instead.

## Fault in the connection between the server and the client

If the computer is simultaneously used as a server with the Engineering System and a client cannot establish the connection to the server, you should check the releases set on the server.

1. Exit Runtime on the server.
2. Select the command "Find computer..." in the shortcut menu of the network environment on the desktop of the server.
3. Enter the name of the server as the computer to be found.
4. Open the computer found to recognise the released directories.
5. Remove all the releases that begin with "WinCC\_Project\_HMI". Information on this is available in the documentation for the operating system.

This malfunction is caused by the use of the command "Save as..." in conjunction with the startup of the Runtime of this new project. You can make copies of the projects for backup purposes using the "Save as..." command. You should, however, continue to work with the original project.

## Language setting for Runtime Professional

With Runtime Professional, illegible texts may occur during runtime if the settings in the operating system for "Language for non-Unicode programs" do not match the selected Runtime language. This setting must also be the same on the client and the server for client/server applications.

## 2.7 Runtime

Therefore, first check in the Control Panel under "Regional and Language Options > Advanced" whether the setting for "Language for non-Unicode programs" is the same as the Runtime language.

### Starting WinCC Runtime Professional

If Engineering System and Runtime are operated on a computer, Runtime or simulation for a project opened in the engineering system should only be started and ended via the TIA portal. Other options, for example, the symbol in the taskbar information area, should not be used.

### Setting the services for the SQL server

In order to ensure the full functionality of the SQL server for WinCC and WinCC Runtime, you have to check the SQL server settings.

1. Start "Programme > Microsoft SQL Server 2005 > Configuration Tools > SQL Server Configuration Manager" in the start menu.
2. Click "SQL Server 2005 Services" in the tree.
3. Check the services "SQL Server (WinCC)", "SQL Server (WINCCPLUSMIG)" and "SQL Server Browser". "Automatic" must be entered for "Start Mode". "LocalSystem" must be entered for "Log On As". Change the settings, if necessary.
4. Click "SQL Server Network Configuration" in the tree.
5. Click "Protocols for WinCC".
6. Check the "TCP/IP" protocol. "Enabled" must be entered for "Status". Change the settings, if necessary.

### "Report system error" in WinCC Runtime Professional

The "Report system error" functionality is limited in WinCC Runtime Professional in conjunction with an S7-300 or S7-400. In an alarm view, only one alarm is ever displayed for each diagnostics type. Alarms on other errors of the same diagnostics type are not displayed.

### Faceplate instances in a screen

The number of faceplate instances per screen is not limited. However, you should be aware of the fact that the number of faceplate instances used, or the use of scripts in the faceplate instances, will have an impact on performance.

## 2.8 HMI devices

### 2.8.1 Notes on HMI devices

#### Contents

Information that could not be included in the online help.

If the PC goes into standby or hibernate mode while the transfer is in progress, the panel status after interruption of the transfer is not defined.

#### TS Adapter with Ethernet interface

If an HMI device is connected via Ethernet and a TS adapter, it can not be reset to factory settings.

#### Simulation of the Basic Panels

Use an output field in an alarm text to output an external tag. The content of the output field will always be displayed with "0" during simulation.

#### Simulation with real PLC connection

The access point used by the simulation is independent from the settings of the Engineering System and can only be altered in the Control Panel with the "Setting PG/PC Interface" tool. If the PLC connection is terminated right after the start of the simulation with alarm 140001, you should check the access point used by the simulation with "Setting PG/PC Interface".

1. Double-click "Setting PG/PC Interface" in the Control Panel. A dialog opens.
2. Select "S7ONLINE" in the "Access point of application" field as standard for HMI.
3. Select the interface in the "Interface Parameter Assignment Used" area.
4. Exit the dialog "Setting PG/PC Interface" with OK

#### Loading of projects without recipe data records

You are using recipes in a project. You transfer the project to a Basic Panel without recipe data records.

You may encounter inconsistencies if you have altered the structure of the recipe in the Engineering System and the device already held recipe data records.

Check the consistency of the data records in this case. The device will not issue a note for all structural changes.

### Floating point numbers on MP 277, MP 377, TP 177B 4" and CP4

Only floating point numbers in the range from  $10^{-293}$  ...  $10^{+307}$  are displayed correctly on the HMI devices MP 277, MP 377, TP 177B 4" and CP4. If the tag value is outside this range, it is displayed as 0.

### USB device driver under Windows XP

If a configuration PC with Windows XP and a Comfort Panel are connected via USB, the S7-USB driver may be reinstalled when the HMI device is restarted. The device settings may in this case not be restored.

### KP400 Basic, TP1500 Comfort, KP1500 Comfort, TP1900 Comfort, TP2200 Comfort

The devices are already described in the online help, but cannot yet be configured in WinCC. To be able to configure these devices, you have to install the HSP that will be released soon.

### Mobile Panels V2

If you use Mobile Panels V2 in a project, it is not possible to open the project with WinCC V11 SP1. This affects projects with the following devices:

- Mobile Panel 277F IWLAN (RFID Tag)
- Mobile Panel 277F IWLAN V2
- Mobile Panel 277 IWLAN V2

### "Zone ID/Connection point ID" tag of a Mobile Panel 277 IWLAN V2

The tag used for the "Zone ID/Connection point ID" must be of data type INT for Mobile Panel 277 IWLAN V2 devices. Adapt this data type if necessary when migrating a project.

### HMI devices with operating system Windows CE 5.0 or higher

Owing to a modified client-server communication security setting, the time difference between the HMI device (client) and PC (server) must not exceed 1 day. If you back up recipe data from the HMI device on a network drive, for example, make sure that the time is set correctly on the PC (server) and the HMI device (client).

### HMI devices with high communication load

S7 Diagnostics should be enabled if a Panel is assigned many connections to PLCs or other HMI devices. Otherwise, you will risk overload on the Panel.

### Device replacement in the Engineering System

In the Engineering System, you replace a device with configured LED keys with a device without LED keys. Runtime start fails after you have transferred the project data to the device.

For this reason, delete the LED key configuration before you replace the device.



## 2.9 Add-ons

### 2.9.1 DataMonitor

#### Contents

Information that could not be included in the online help.

#### Approved versions of Microsoft Office

The following versions of Microsoft Office are approved for "Excel Workbooks":

- Office 2003 SP3
- Office 2007 SP2
- Office 2010 SP1 (32-bit version)

The use of the 64-bit version of Office 2010 is not enabled.

#### Installing Internet Information Service

When installing IIS, specify the following settings for the DataMonitor server in addition to the settings defined in the Online Help:

- WWW Services > Application development features > .NET Extensibility:
- WWW Services > Application development features > ASP.NET:
- WWW Services > Security > Windows Authentication:

#### Installation on a PC with Microsoft Office 2003 SP2

An error alarm that is output at the end of the setup of "Excel Workbook Wizard" on a computer running Microsoft Office 2003 SP2 indicates that an update for Office 2003 has failed. Proceed as follows:

1. Open the "InstData\KB907417\Media" directory on the medium containing the installation files for WinCC Runtime Professional.
2. Start the update in accordance with the operating system language.
3. Restart the Setup of WinCC Runtime Professional to install the "Excel Workbook Wizard".

#### Removal of WinCC Runtime

If you also want to use DataMonitor after removing WinCC Runtime Professional, you have to perform a repair of the installation as follows:

1. Open the system controller.
2. Double-click on "Add/Remove Programs".
3. Select "SIMATIC WinCC/DataMonitor client" in the list of programs installed

4. Click on the "Change/Remove" button.
5. Select the setting "Repair" in the WinCC DataMonitor setup".

## Excel Workbooks and Excel Reports

The regional settings of the operating system must match the Office language installed on the computer running Excel Workbooks and Excel Reports. You may also have to adapt the system account settings.

To configure the regional and language settings for system accounts in Windows 7 and Windows 2008(R2), select the "Regions and Language > Administration" dialog in the Control Panel.

## Opening Excel workbooks on a computer not connected to the internet

If you want to use the DataMonitor client on a computer not connected to the internet, you must deactivate certificate checking. To do this, follow these steps:

1. Open Internet Explorer.
2. Select the "Internet options" command from the "Tools" menu.
3. Click "Advanced".
4. In the field "Security" deactivate the setting "Check for publisher's certificate revocation".

## Opening Excel workbooks with Excel 2010

Due to safety settings, the automatic connection of an Excel workbook with the server does not work in Excel 2010.

If you wish to enable automatic connection, deactivate the "Enable protected view for files originating from the internet" and "Enable Protected View for files located in potential unsafe locations" settings in Excel 2010 under "Files > Options > Trust Center > ProtectedView".

## Name of the user groups

The name of the user groups differs at certain locations of the Online Help from the actually created user groups. The following assignment is valid:

SIMATIC Report Administrators corresponds to DM\_Admin

SIMATIC Report Users corresponds to DM\_User

## 2.9.2 WebNavigator

### Contents

Information that could not be included in the online help.

### Removal of WinCC Runtime

If you also want to use WebNavigator after removing WinCC Runtime Professional, you have to perform a repair of the installation as follows:

1. Open the system controller.
2. Double-click on "Add/Remove Programs".
3. Select "SIMATIC WinCC/WebNavigator client" in the list of programs installed
4. Click on the "Change/Remove" button.
5. Select the setting "Repair" in the WinCC/WebNavigator setup".

### Access via Web client

A user can only get access via a Web client if a screen released for Web access has been assigned to him as the start screen in the user administration.

To release a screen for Web access:

1. Select the "Properties" command in the shortcut menu of a screen.
2. Activate the "Web access" option under "Properties > Web access".

To assign a start screen to a user:

1. In the user administration, select the user to whom you would like to assign a start screen.
2. Click "Properties > General" > Web options > Settings in the Inspector window to specify a start screen. You can only select screens which have been released for Web access.

### Virus scanner Trend Micro OfficeScan

It is not recommended to use the virus scanner of Trend Micro OfficeScan in combination with WebNavigator, as this virus scanner may have an adverse impact on screen loading times.



# Index

SIMATIC PC station  
Load, 38

## A

Alarm  
Inspector window, 25  
Alarm indicator, 25  
Alarm text  
Output fields, 30  
Special characters, 30  
Alarm view, 25  
Alarm window, 25  
Area pointer  
Date/time, 32  
Date/time PLC, 32  
Array, 28  
Array element  
Location of use of HMI tag, 28  
Name, 28  
Array tag  
Char, 28  
Automation License Manager, 5

## C

Char  
Array tag, 28  
Comfort Panel  
S7-1200, 38  
Communications processor  
Operation, 12  
SIMATIC NET DVD, 12  
Compile  
Address parameters, 38  
Connection resource  
SIMATIC S7 1200, 34  
Copying  
Alarm indicator, 25  
Alarm view, 25  
Alarm window, 25  
HMI device, 17  
Cross-reference  
Inspector window, 25

Cycle  
Online delta load, 20

## D

Decimal places, 9  
Device  
Copying, 17  
Download  
Extended download to device, 38  
Downloading data to the PLC  
Error message, 38  
DTL data type  
Restriction, 32

## E

Error message  
Downloading data to the PLC, 38  
Event  
Inspector window, 25  
Extended download to device, 38

## F

Force job  
On SD card, 7

## H

Hewlett-Packard  
Keyboard driver, 39  
Hibernate, 7  
HMI device replacement, 18

## I

I/O field  
Decimal format, 27  
Display format, 27  
Inspector window  
Cross-reference, 25  
Event, 25  
Installation  
ProSave, 37  
Target directory, 10  
virtual drives, 5

IP address, 8

## K

Keyboard driver  
Hewlett-Packard, 39  
Keyboard shortcuts  
Changes in assignment, 6

## L

Language behavior  
Screen keyboard, 39  
Load  
SIMATIC PC station, 38

## M

Maximum length  
Tag, 39  
Mitsubishi  
Connection interruption, 32

## N

Name  
Array element, 28  
Network drive, 8

## O

Online deltaload  
Cycle, 20  
OP73  
Loading a project, 38  
OP77A  
Loading a project, 38  
Output fields  
Multiplex tag, 30  
Overview window, 18

## P

Permitted characters  
User view, 39  
Project library, 18  
ProSave  
Installation, 37

## R

Recipe data record  
Transferring the project, 43  
Resource  
SIMATIC S7 1200, 34  
Runtime  
Mouse wheel, 40

## S

Screen keyboard  
Language behavior, 39  
Screen saver, 7  
SD card  
Open force job, 7  
Security Controller, 19  
Security setting  
Security Controller, 19  
Shutting down Windows XP, 7  
SIMATIC NET DVD for communications processors,  
12  
SIMATIC S7 1200  
Connection resource, 34  
Resource, 34  
Simulation, 43  
PLC connection, 43  
Special characters  
Alarm text, 30  
Standby Mode, 7

## T

Tag  
Maximum length, 39  
TP177A  
Loading a project, 38  
Transferring the project  
HMI device, 43  
Recipe data record, 43  
TS adapter, 43

## U

User view  
Permitted characters, 39

**V**

Virtual drives, 5

