



PROFINET

Component Editor

The PROFINET component editor

PROFINET

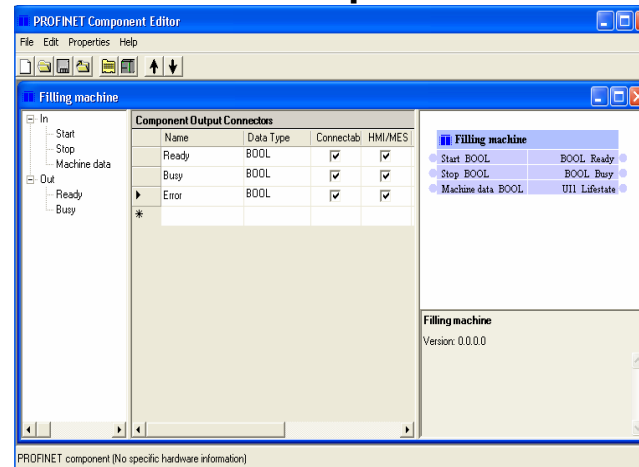
- **The PROFINET component editor is a software tool to create a PROFINET component**
 - The tool is designed for the OEM, system integrator or end-user to specify machine descriptions
 - The tool creates automatically:
 - The PCD file (XML file) which describes the PROFINET component
 - CSV file for documentation purposes (e.g. import in Excel)
 - Configuration file (CBS file) for the Siemens PROFINET/PROFIBUS proxy
 - Icons for the plant-view and network-view of the PROFINET engineering tools (e.g. SIMATIC iMap)

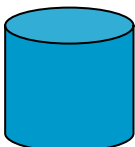
The PROFINET Component Editor generates automatically...


PROFINET

 Mini icons for the PROFINET engineering tool

PROFINET component editor

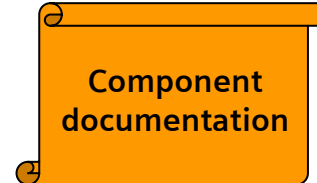


 Siemens IE/PB link configuration (CBS file)

PROFINET Component
 Machine

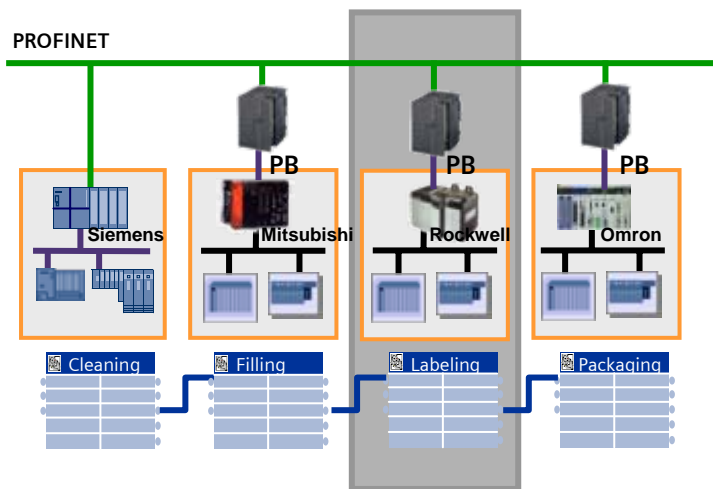
On	On
Start	Stopped
Stop	Running
	Ready
	Lifestate

 XML File

 Component documentation
 CSV File

Usage of the tool

PROFINET



PROFINET Component Editor

Name	Data Type	Connectable	HMI/MES	Address	Initial Value
Start	BOOL	<input checked="" type="checkbox"/>	<input checked="" type="checkbox"/>	0.0	FALSE
Stop	BOOL	<input checked="" type="checkbox"/>	<input checked="" type="checkbox"/>	0.1	FALSE
Diagnosics	BOOL	<input checked="" type="checkbox"/>	<input checked="" type="checkbox"/>	0.2	FALSE

Define the machine interface

Hardware Specifications

Component connected to the PROFINET network

IP Address:

Subnet Mask:

Component connected to a PROFINET proxy

PLC

- AB SLC500 with SST-PFB-SLC
- AB MicroLogix 1500 with Hilscher RIF 1769-DPS
- AB SLC500 with SST-PFB-SLC**
- AB PLC-5 with SST-PFB-PLC5
- ELAU PacDrive Max-04 with Hilscher CIF 104-DPS
- Mitsubishi Q Series with QJ71PB93D
- Omron PLC (C200H, CS1) with C200HW-PRT21
- Schneider Quantum / Unity with ProSoft PTQ-PDPS
- Siemens SIMATIC S5 115/135/155 with IM 308C

Specify the PLC hardware

SIMATIC iMap

Link components

Machine description (XML file)

On	On
Start	Stopped
Stop	Running
	Ready
	Lifestate

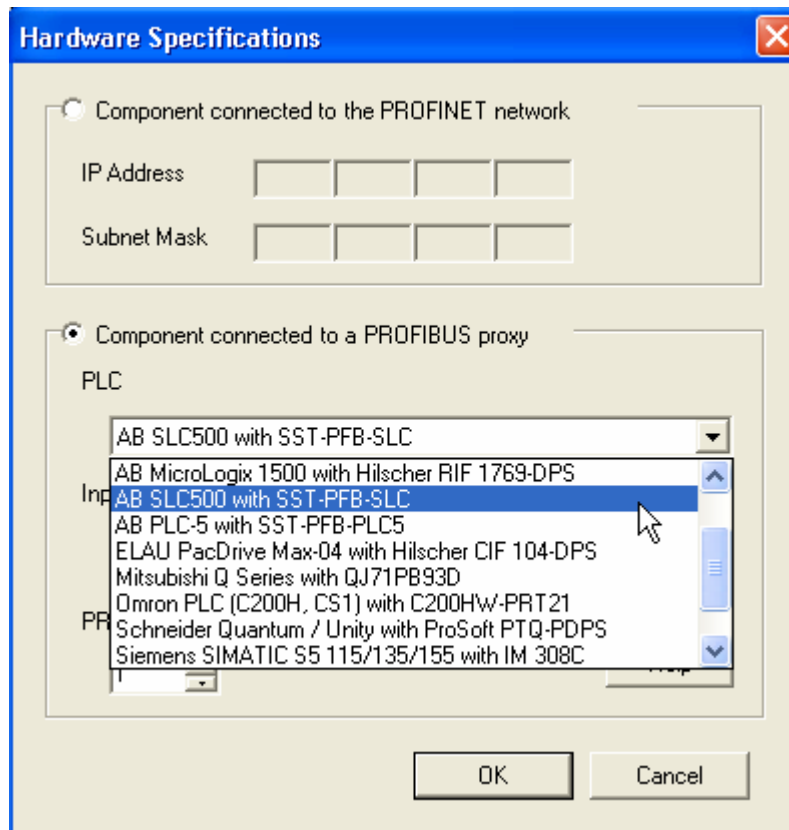
Machine description (XML file)

SIEMENS

PROFINET Hardware Specifications

PROFINET

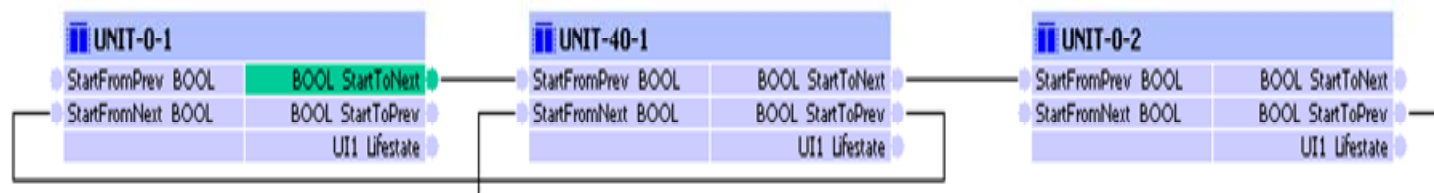
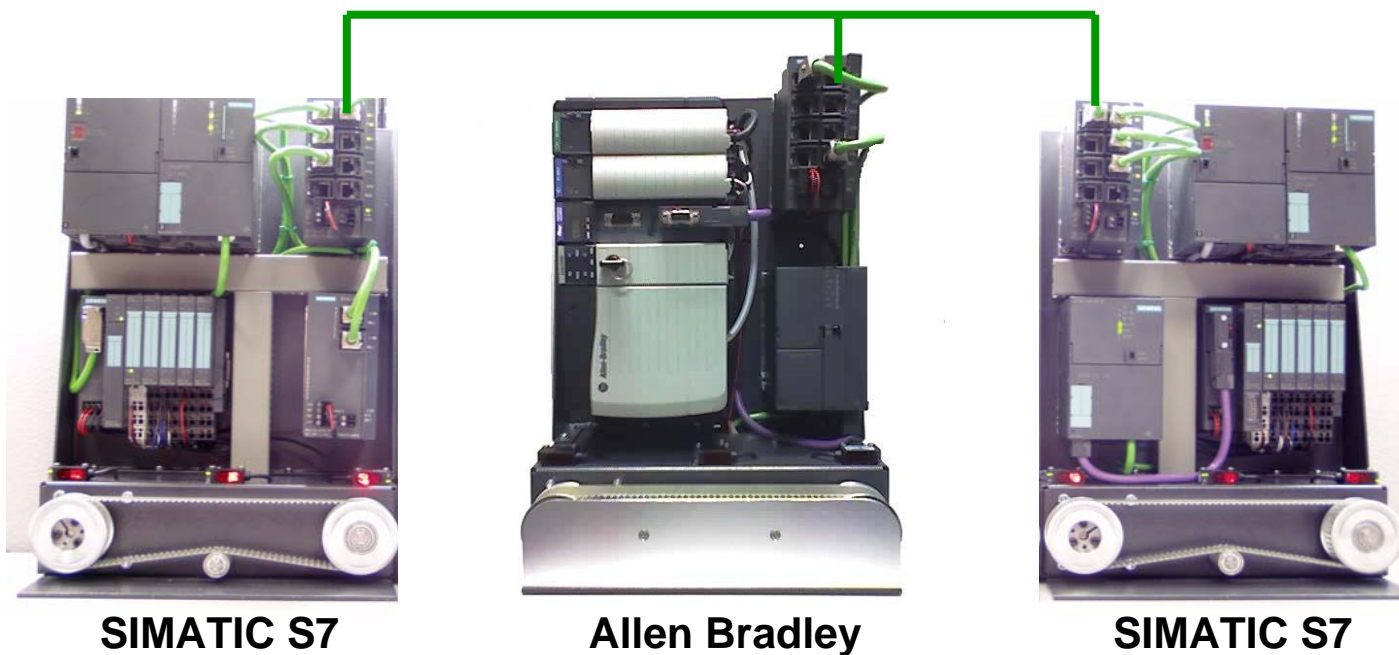
The PROFINET component editor creates PROFINET components for the following control platforms:



- Allen Bradley CompactLogix with Hilscher RIF 1769-DPS
- Allen Bradley ControlLogix with SST-PFB-CLX
- Allen Bradley FlexLogix with Hilscher RIF 1788-DPS
- Allen Bradley MicroLogix with Hilscher RIF 1769-DPS
- Allen Bradley SLC500 with SST-PFB-SLC
- Allen Bradley PLC5 with SST-PFB-PLC5
- ELAU PacDrive Max-04 with Hilscher CIF 104-DPS
- Mitsubishi Q Series with QJ71PB93D
- Omron PLC (C200H, CS1) with C200HW-PRT21
- Schneider Quantum / Unity with ProSoft PTQ-PDPS
- Siemens SIMATIC S5115/135/155 with IM 308C
- Siemens SIMATIC S5 90/95/100 with CP 541
- Siemens SIMATIC S5 95U-DP

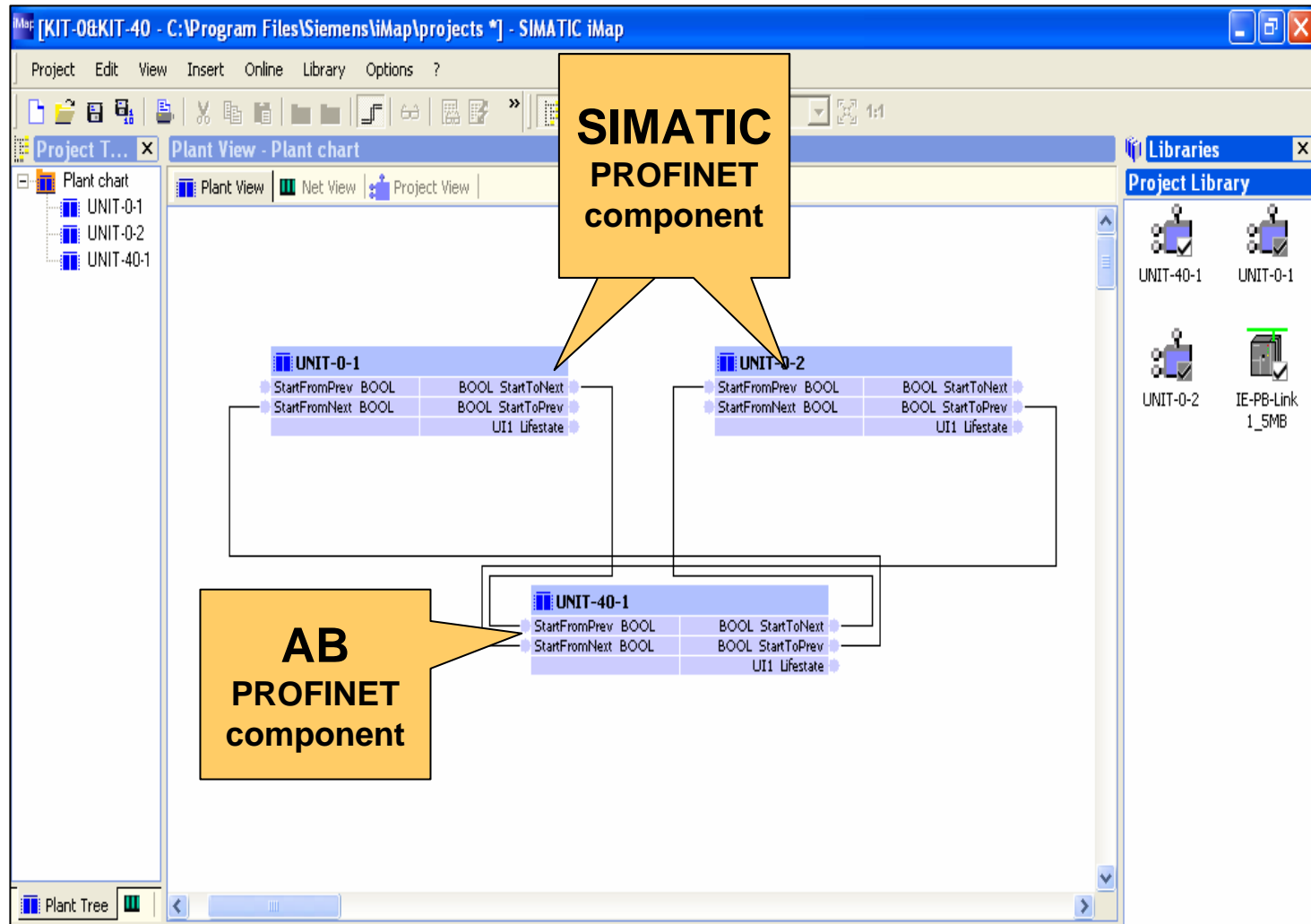
Example: Allen Bradley in a PROFINET application

PROFINET



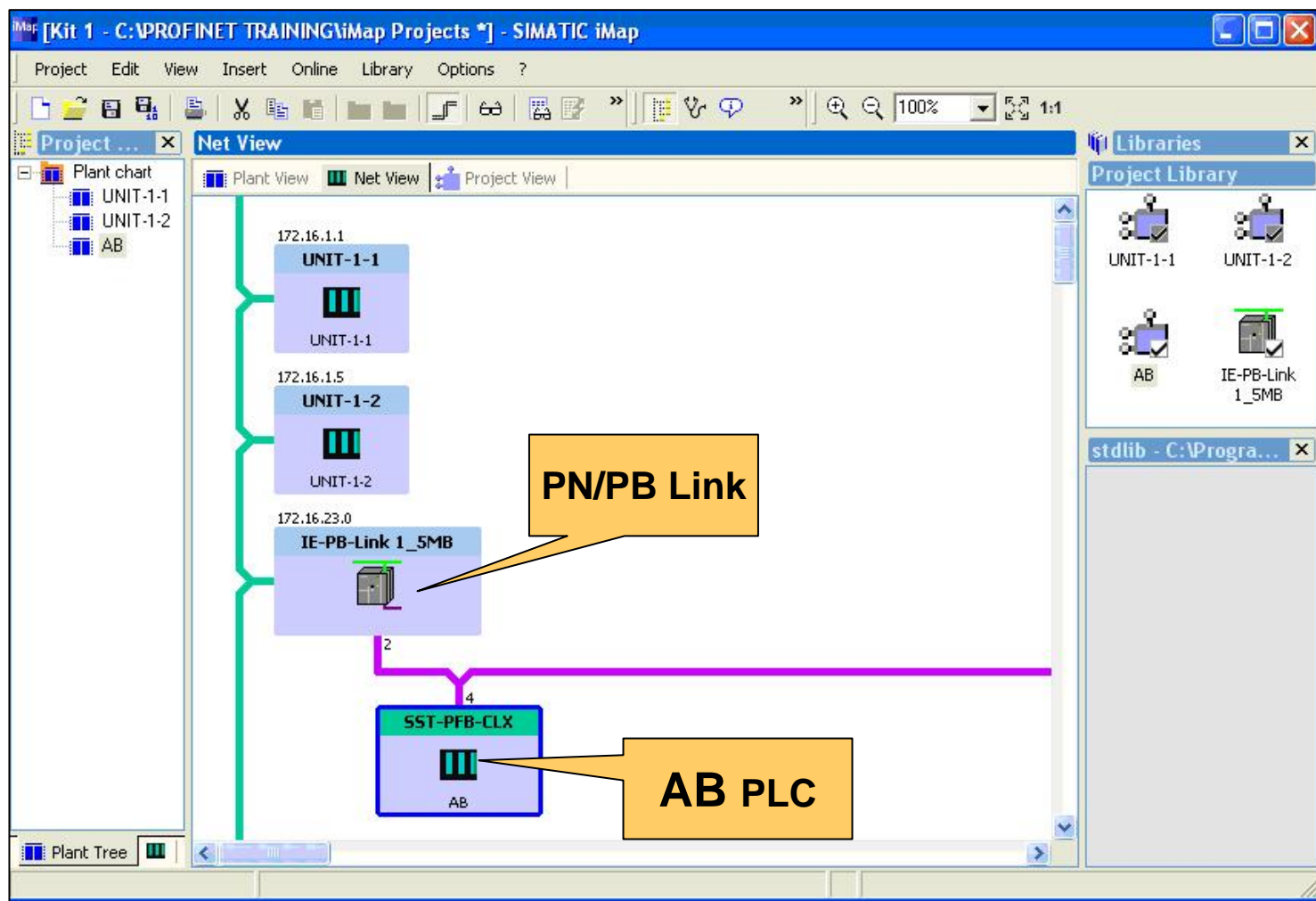
Example: Allen Bradley in a PROFINET application

PROFINET



Example: Allen Bradley in a PROFINET application

PROFINET



SIEMENS