

Controllers

ijconfig™ Controller Configuration Utility

Introduction

Features & Benefits

- ▶ Windows®XP or 7 operating system provides powerful graphical interface
- ▶ Automatic line routing and interloop wiring reduces overall drawing time
- ▶ User selected tag names in a reference list allow easy interconnection between continuous and discrete loops
- ▶ Choice of function block and ladder logic format provides application versatility
- ▶ Easy cut, copy, and paste capabilities allow control strategies to be duplicated and shared between multiple controllers for reduced configuration time
- ▶ User defined line styles and colors permit visual separation of continuous and analog signals for easier understanding of control loops
- ▶ Line layering capability allows viewing of continuous and discrete signals independently or together
- ▶ Comprehensive drawing package facilitates creation of text comments and graphical illustrations for better understanding of the control strategy
- ▶ Application Library provides quick start-up and base line for more complex configurations

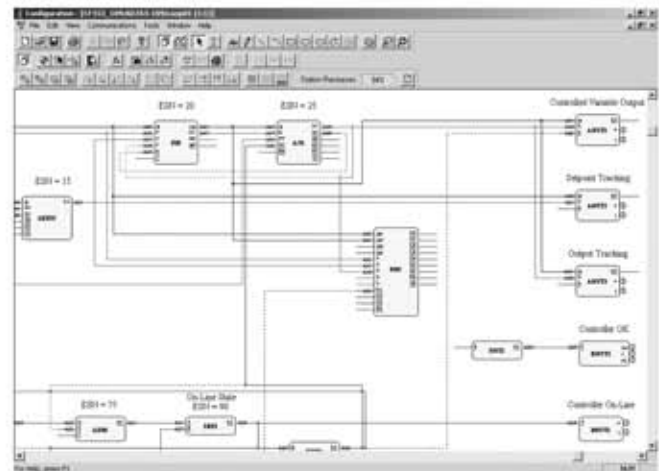
2

Description

The ijconfig™ Configuration Utility provides the tools to create a loop controller graphical interface and manage a loop controller configuration. Based on the 32-bit Windows technology, the software allows configuration of discrete control in function block or ladder logic. Moreover, comprehensive drawing capabilities allow the inclusion of comments and illustrations that further explain the control circuit to be included.

Loops for continuous control are configured in function block form, while discrete loops are configured in either ladder logic or function block. The software's reference list allows user's to create tags that interconnect discrete signals between function block loops and contacts or coils in the ladder logic. Interconnecting signals from comparators or alarms on measured variables, such as pressure, flow and temperature, eliminate the need for external pressure switches or thermal switches.

Depending on the user's preference, function block interconnection can be performed via Windows-based dialog boxes or point and click wiring with a cursor. A dynamic drag and drop feature allows user to easily move function blocks to create an intuitive signal flow design. Function block parameters are entered and modified via clear dialog boxes.



For documenting and archiving configurations, the configuration utility supports a variety of printing options. Standard print features, such as portrait and landscape, various paper sizes, and print preview are supported. In addition to graphical view printing, a list of all the parameters configured in the station can be printed. This list permits easy troubleshooting during start-up or maintenance.

To order the ijconfig Configuration Utility kit, which includes installation CD, the user's manual, and a cable to connect a PC to the front port of the Model 353, specify part P/N ijconfig Vx.xx¹.

System Requirements

- ▶ Model 353 with software version 1.2 or higher
- ▶ Windows XP or 7
- ▶ Pentium 600 Mhz or higher processor
- ▶ 512 MB of memory
- ▶ 1 GB of free disk space
- ▶ CD Rom Drive

1) x.xx specifies the software's revision number. This will be defined by Siemens as the latest revision.