

SIEMENS

SIMATIC HMI

WinCC flexible 2008 SP3

What's new in WinCC flexible 2008

System Manual

<u>Overview</u>	1
<u>WinCC flexible 2008</u>	2
<u>WinCC flexible 2008 SP1</u>	3
<u>WinCC flexible 2008 SP2</u>	4
<u>WinCC flexible 2008 SP3</u>	5

Printout of the Online Help

11/2011

Printout of the Online Help

Legal information

Warning notice system

This manual contains notices you have to observe in order to ensure your personal safety, as well as to prevent damage to property. The notices referring to your personal safety are highlighted in the manual by a safety alert symbol, notices referring only to property damage have no safety alert symbol. These notices shown below are graded according to the degree of danger.

DANGER

indicates that death or severe personal injury **will** result if proper precautions are not taken.

WARNING

indicates that death or severe personal injury **may** result if proper precautions are not taken.

CAUTION

with a safety alert symbol, indicates that minor personal injury can result if proper precautions are not taken.

CAUTION

without a safety alert symbol, indicates that property damage can result if proper precautions are not taken.

NOTICE

indicates that an unintended result or situation can occur if the relevant information is not taken into account.

If more than one degree of danger is present, the warning notice representing the highest degree of danger will be used. A notice warning of injury to persons with a safety alert symbol may also include a warning relating to property damage.

Qualified Personnel

The product/system described in this documentation may be operated only by **personnel qualified** for the specific task in accordance with the relevant documentation, in particular its warning notices and safety instructions. Qualified personnel are those who, based on their training and experience, are capable of identifying risks and avoiding potential hazards when working with these products/systems.

Proper use of Siemens products

Note the following:

WARNING

Siemens products may only be used for the applications described in the catalog and in the relevant technical documentation. If products and components from other manufacturers are used, these must be recommended or approved by Siemens. Proper transport, storage, installation, assembly, commissioning, operation and maintenance are required to ensure that the products operate safely and without any problems. The permissible ambient conditions must be complied with. The information in the relevant documentation must be observed.

Trademarks

All names identified by © are registered trademarks of Siemens AG. The remaining trademarks in this publication may be trademarks whose use by third parties for their own purposes could violate the rights of the owner.

Disclaimer of Liability

We have reviewed the contents of this publication to ensure consistency with the hardware and software described. Since variance cannot be precluded entirely, we cannot guarantee full consistency. However, the information in this publication is reviewed regularly and any necessary corrections are included in subsequent editions.

Table of contents

1	Overview	5
1.1	What's new in WinCC flexible 2008?	5
1.2	What's new in WinCC flexible 2008 SP1?.....	7
1.3	What's new in WinCC flexible 2008 SP2?.....	9
1.4	What's new in WinCC flexible 2008 SP3?.....	11
2	WinCC flexible 2008	13
2.1	Optimizing performance in Runtime.....	13
2.2	New functionality and functional enhancements	14
2.2.1	CSV import/export	14
2.2.2	Extended user administration	15
2.2.3	Editors	17
2.2.3.1	Screens, text lists	17
2.2.3.2	Events at objects	19
2.2.3.3	Faceplates	20
2.2.3.4	Alarms	20
2.2.3.5	Device settings	21
2.2.3.6	ES and RT system functions.....	22
2.2.4	Transfer	23
2.2.5	Runtime options.....	25
2.2.5.1	ProSave.....	25
2.2.5.2	Sm@rtService/Sm@rtAccess.....	26
2.3	HMI devices.....	27
2.3.1	Support for new HMI devices.....	27
2.3.1.1	New Panel	27
2.3.1.2	New Multi Panel.....	28
2.3.1.3	New Panel series.....	29
2.3.1.4	New panel PCs.....	29
2.4	Licenses	30

3	WinCC flexible 2008 SP1	31
3.1	Improved usability	31
3.2	New functionality and functional enhancements	32
3.2.1	Editors	32
3.2.1.1	Logs	32
3.2.1.2	Screens	35
3.2.1.3	Recipes	36
3.2.1.4	Tags	36
3.2.1.5	Logs	37
3.2.1.6	System alarms	38
3.2.2	Transfer	39
3.2.3	Runtime options	40
3.2.3.1	Sm@rtService/Sm@rtAccess	40
3.3	HMI devices	42
3.3.1	Printing via print server	42
4	WinCC flexible 2008 SP2	45
4.1	Engineering and usability	45
4.2	New functionality and functional enhancements	47
4.2.1	Communication	47
4.2.2	Sm@rtService/Sm@rtAccess	48
4.2.2.1	Performance	48
4.2.2.2	Automatic scaling	49
4.2.2.3	Revised configuration dialogs	50
4.3	HMI devices	51
4.3.1	Mobile Panel	51
4.3.2	Enhancements in the Basic Panels	52
4.3.3	Accessories	53
4.4	Operating systems	54
5	WinCC flexible 2008 SP3	55
5.1	New functionality and functional enhancements	55
5.1.1	Screens	55
5.1.2	Character set for Chinese characters	57
5.2	HMI devices	58
5.2.1	Multi Panel	58
5.3	Communication	59
5.4	Transfer	60
5.5	Operating systems	61
	Index	63

Overview

1.1 What's new in WinCC flexible 2008?

Optimizing performance in Runtime

- Enhancement of the performance of alarm logs and tag logs

New functionality and functional enhancements

CSV import/export

- New menu command for CSV import / export
- CSV import / export for tags and alarms

Extended user administration

- Number of failed login attempts can be set
- Logon is only possible with password
- Graduated authorizations for administration
- Exclusion of groups from password aging
- Hidden password input

Editors

- Screens, text lists
 - Output fields in texts
- Events at objects
 - Operator input completed
 - Leaving a pressed button
- Faceplates
 - Size of faceplate instances
 - Project texts of faceplates can be exported
- Alarms
 - Display of the absolute address for discrete alarms
- Device settings
 - Disable function keys on modal dialogs

ES and RT system functions

- New system function
 - SetDaylightSaving
 - EncodeEx
- Enhancement of existing system functions
 - ChangeConnection
 - ArchiveLogFile
 - NotifyUserAction

Transfer:

- S7 routing via Ethernet
- Transfer of the operating system image via Ethernet
- Adjustable transmission rate of the Ethernet interface

Runtime options

- Sm@rtService/Sm@rtAccess
- ProSave
 - Upload / download of recipe data records as CSV file.

HMI devices

Support for new HMI devices

- New Panel
 - TP 177B 4"
- New Multi Panel
 - MP 177 6" Touch
- Basic Panels
 - New Panel series
- New panel PCs

Licenses

- New RT license: "WinCC flexible 2008 Runtime (4096)"
- Raised system limit to support 4096 tags on MP 377

1.2 What's new in WinCC flexible 2008 SP1?

Introduction

The Service Pack 1 for WinCC flexible 2008 is a free upgrade from WinCC flexible 2008.

In addition to numerous optimizations in the current software version, Service Pack 1 offers a range of functional enhancements.

Improved usability

- Larger tag selection field
- Object list saves size
- Quick info can be switched off

New functionality and functional enhancements

CSV import/export

- CSV import/export of text lists

Editors

- Logs
 - Logging language for logs and Audit Trail
 - Logging of Asian texts
 - Logs with checksums
 - Logging alarm texts in Audit Trail
- Screens
 - "Go to definition" shortcut menu
- Recipes
 - Exporting and importing recipe data with a checksum
- Tags
 - Language-dependent display names
- Reports
 - Printout of Audit Trail
- System alarms
 - "Incoming" event

Transfer:

- Indirect transfer with "Pack & Go"
- Updating modified characteristics for the operating system

Runtime options

- Sm@rtService/Sm@rtAccess:
 - Hidden input of the password via Sm@rtClient
 - Sending secure e-mails

HMI devices

- Printing via print server

1.3 What's new in WinCC flexible 2008 SP2?

Introduction

Service Pack 2 for WinCC flexible 2008 is a free upgrade from WinCC flexible 2008 and WinCC flexible 2008 SP2.

Engineering and usability

- New menu command for clearing the list of most recently opened projects
- Object view shows additional information
 - Tag comments
 - Recipe number
- New wide screen resolutions for WinCC flexible Runtime

New functionality and functional enhancements

Communication

- Modicon Modbus TCP/IP
- Mitsubishi FX
- Omron Hostlink/Multilink

Runtime options

- Sm@rtService/Sm@rtAccess:
 - Enhanced performance
 - Automatic scaling for different screen resolutions
 - Clearer configuration dialogs for Sm@rtServer and Sm@rtClient

HMI devices

- Mobile Panel:
 - Mobile Panel 277F IWLAN (RFID Tag)
 - Mobile Panel 277 (F) IWLAN V2
- Basic Panel
 - Retentive message buffer
 - Support of additional system functions
 - Expanded quantity framework
- Accessories
 - Memory card
 - UPS Module

Operating system

- Support for Microsoft Windows 7

1.4 What's new in WinCC flexible 2008 SP3?

Introduction

Service Pack 3 for WinCC flexible 2008 is a free upgrade for WinCC flexible 2008 and WinCC flexible 2008 SP1 and SP2.

New functionality and functional enhancements

- New widescreen resolutions for WinCC flexible Runtime
- Character set for Chinese characters

Communication

- Communication via SIMOTION for SIMATIC Mobile Panel V2 for error-free operation
 - Mobile Panel 277F IWLAN V2
 - Mobile Panel 277F IWLAN (RFID) V2

Transfer

- Further HMI devices for transfer via "S7 Ethernet"

HMI devices

- Mobile Panel:
 - MP 377 15" Touch Daylight

Operating system

- Support of Windows 7 (64-bit)

2.1 Optimizing performance in Runtime

Enhancement of the performance of alarm logs and tag logs

CSV file

Accelerated data storage on the basis of current CSV logging.

New logging format: RDB

Data can now be saved in RDB format. RDB is an internal format of Runtime. The optimized data storage accelerates read and write access. Logs of this format can only be read or displayed using WinCC flexible Runtime.

The selection of the storage location was expanded at the "Alarm log" and "Data log" for the RDB format.

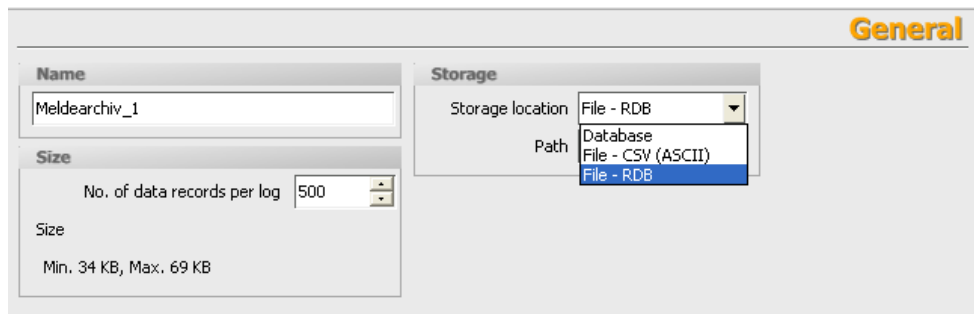


Figure 2-1 "Alarm log" editor

Convert the RDB file to CSV format using the "CopyLog" function to make the data available for applications outside of WinCC flexible Runtime.

Supported HMI devices:

xP 277, Mobile Panel 277, Mobile Panel 277 IWLAN, Mobile Panel 277F IWLAN, MP 377, WinCC flexible Runtime

2.2 New functionality and functional enhancements

2.2.1 CSV import/export

Enhancements for CSV import / export

- Enhancements in WinCC flexible ES
 - A new command for the import and export of CSV files was added to the "Project" menu.

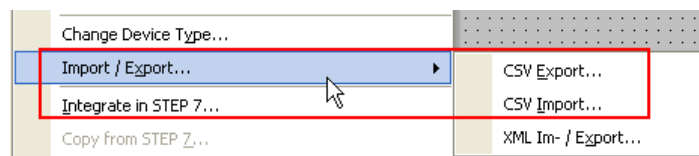


Figure 2-2 "Import/export" menu item

- New importable/exportable objects
 - Alarms
 - Tags
 - Connections
 - Text lists (WinCC flexible 2008 SP1)

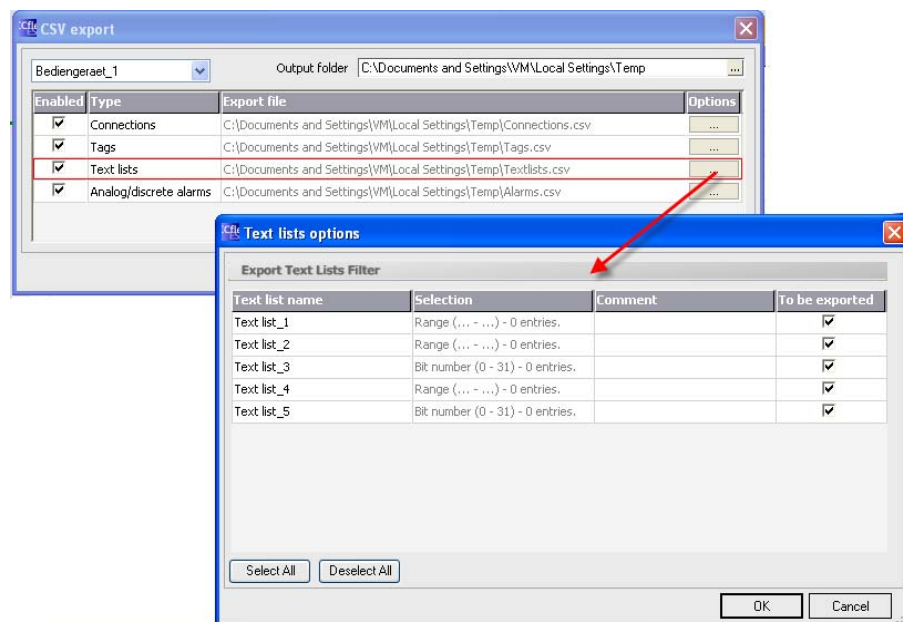


Figure 2-3 CSV export of text lists

2.2.2 Extended user administration

"Runtime security settings" editor

The "Runtime security settings" editor has been expanded to include the following:

- Advanced password rules in the "Password" area
 - "Number of failed login attempts"

You can now define the number of invalid login attempts. Users exceeding the number of invalid login attempts in Runtime are assigned to the "Unauthorized" group.

The number of login attempts is unlimited if you enter the value zero for the number of invalid login attempts.
- Advanced password rules in the "Password security" area
 - "Login using password exclusively"

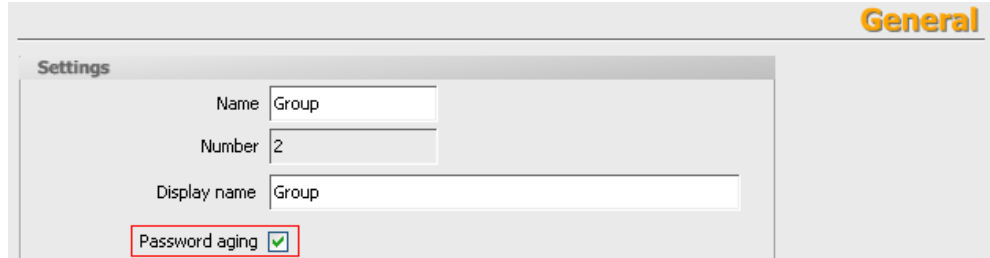
Users are only authenticated in Runtime by means of the password.

For proper user identification, do not assign any redundant passwords.
- New "Group administration" area
 - "Group number hierarchy"

Administrators administer only those users whose group number is less than or equal to that of the administrator. The group numbers can be edited. Allows the creation of administrators with different permissions.

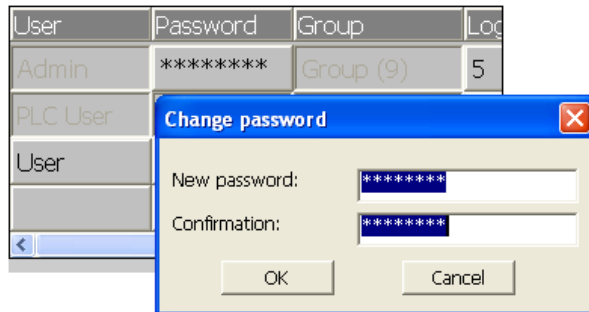
"Groups" editor

You can exclude specific groups from password aging in the "Groups" editor.



Hidden password input

- In WinCC flexible 2008, password input is hidden in the user view.
- A password change must be confirmed by entering the new password twice. This repeated entry meets requirements issued by the FDA.



Supported HMI devices:

OP 77B, xP 177, xP 277, MP 370, MP 377

2.2.3 Editors

2.2.3.1 Screens, text lists

Output fields in texts

You can insert output fields in texts for the following objects. Output fields can be tag values and text list entries.

- "Screens" Editor
 - Text Field
 - Symbolic I/O field
 - Button
 - Switch

- "Text list" editor
 - Text list entry

You can also output control tag values in text lists.

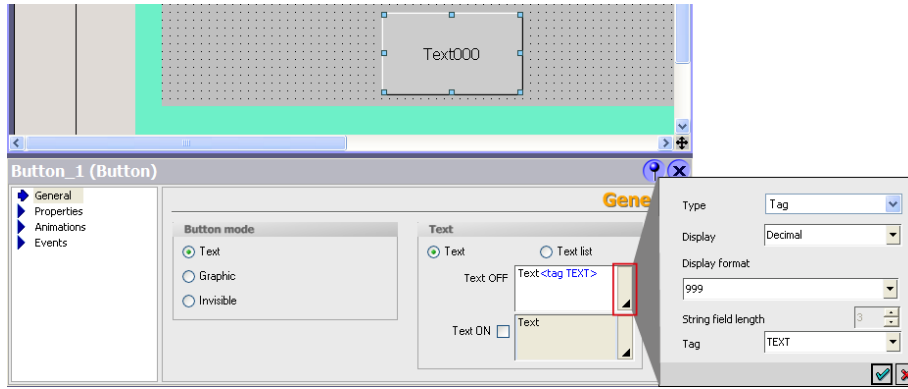


Figure 2-4 Example of the "Screens" editor: Output field in the text of a button

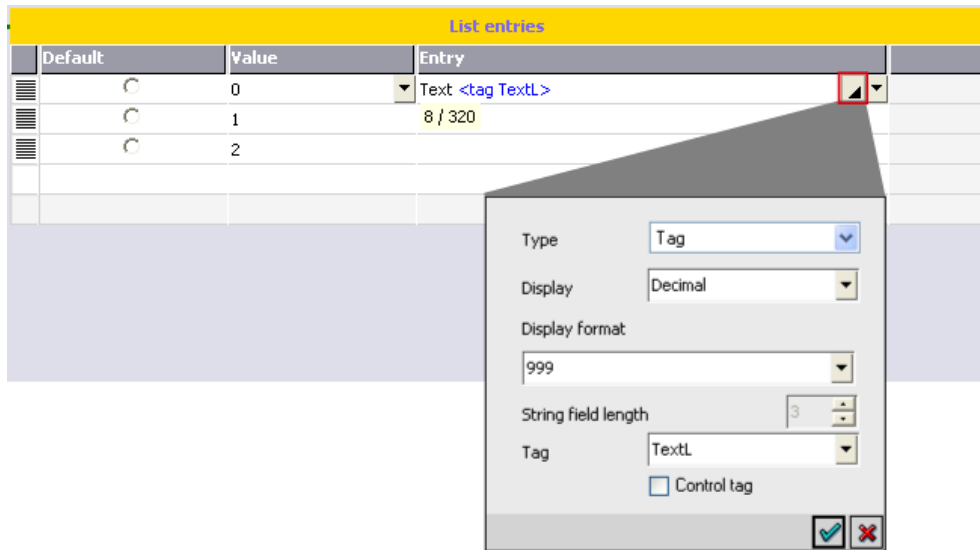


Figure 2-5 Example of the "Text list" editor: Output field in a text list entry

2.2.3.2 Events at objects

On Finish Input

The "On Finish Input" event is triggered after you have confirmed your entries at an I/O field by pressing ENTER, by mouse click or by touch screen operation.

Configurable objects:

I/O fields, graphic I/O field, symbolic I/O field

Release

You can define whether to trigger the "Release" event after the operator has released a specific button. Activate this setting in the "Device settings" editor.

The screenshot shows the 'DEVICE SETTINGS' editor with the following sections:

- General**
 - Device**
 - Name: WCF
 - Device type: MP 270 10" Key 7.2.1.0
 - Author: (empty)
 - Comment: (empty)
 - Start screen: SC100
 - Screen resolution: 640x480
 - User defined pictogram size: (x: 80, y: 58)
- Runtime settings**
 - Use on-screen keyboard:
 - Lock task switching:
 - Displays limit tooltips:
 - Display script comments:
 - Bit selection in text and graphic lists:
 - Bit selection for appearance:
 - Transfer names:
 - Project ID: 0
 - Disable function keys on modal dialogs:
 - Release button on leave: (highlighted with a red box)
- Runtime services**
 - Sm@rtAccess or Service: Start up Sm@rtServer:
 - Sm@rtService: HTML pages:
 - Sm@rtAccess: Web service (SOAP):
 - Sm@rtAccess: SIMATIC HMI HTTP Server:
 - Function as OPC server:
 - Name of SMTP server: (empty)
 - Name of SMTP sender: (empty)
 - SMTP authentication: (empty)

Figure 2-6 "Device settings" editor

2.2.3.3 Faceplates

Faceplates

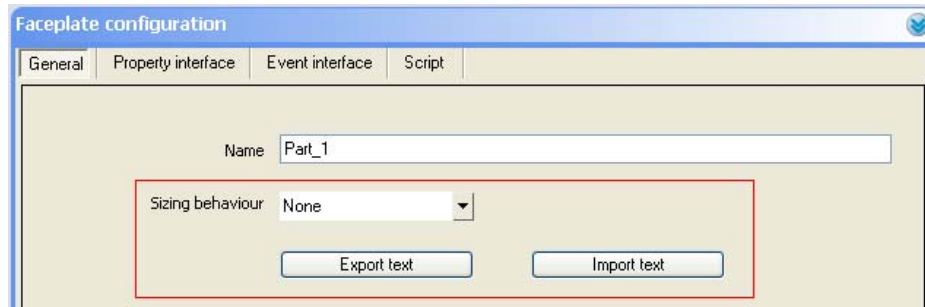


Figure 2-7 "Faceplate configuration" dialog

- Aspect ratio
Define the aspect ratio for the faceplate instance when you create a faceplate. Select "Keep ratio" to maintain the aspect ratio when resizing the faceplate instance. You cannot resize the faceplate instance after having selected "Fixed size".
- Importing and exporting texts
You can export any texts you may be using in faceplates to a CSV file and you can import these texts. Use the export file to transfer the faceplate text to external service providers, e.g. for translation purposes.

2.2.3.4 Alarms

Enhanced view in the "Discrete alarms" editor

The "Trigger address" column was added to the "Discrete alarms" editor. This column displays the address of the trigger tag. Use this address for correct addressing of the trigger tag in the PLC.

Text	Class	Trigger Tag	Trigger bit	Trigger address
1	Errors	T100	0	DB1 DBX1.0
2	Errors	T100_0	1	DB1 DBX3.1
3	Errors	T100_1	2	DB1 DBX5.2
4	Errors	T100_2	3	DB1 DBX7.3

Figure 2-8 "Discrete alarms" editor

2.2.3.5 Device settings

Disable function keys on modal dialogs

You could unintentionally trigger an operation as the function keys remain active on a modal dialog. The "Disable function keys on modal dialogs" function in the "Device settings" editor disables the function keys for the duration of the displayed dialog.

Figure 2-9 "Device settings" editor

To evaluate the status of a PLC, you can configure the following events in the Scheduler after a modal dialog has opened:

- When dialog is opened
- When dialog is closed

2.2.3.6 ES and RT system functions

New system functions

SetDaylightSaving

The system function "SetDaylightSaving" changes the time of the HMI device from standard to daylight saving time and vice versa.

Available on:

TP/OP/MP 277, MP 370, Mobile Panel 277, Mobile Panel 277 IWLAN,
Mobile Panel 277F IWLAN, MP 377

EncodeEx

The system function is an enhancement of the "Encode" system function. Contrary to the "Encode" system function, you can define the line break parameter. Use the "Line break" parameter to delete line breaks or replace them with predefined characters.

Available on:

OP 77B, TP/OP 177B, Mobile Panel 177, TP/OP/MP 277, Mobile Panel 277,
Mobile Panel 277 IWLAN, Mobile Panel 277F IWLAN, MP 370, MP 377

Enhancement of existing system functions

ChangeConnection

The following connections via Ethernet port are supported:

- SIMATIC S7 300/400
- SIMATIC S7 200
- Simotion
- SimaticNC

ArchiveLogFile

The "Directory name" parameter can be specified by means of a tag.

NotifyUserAction

The following parameters can be specified by means of a tag:

- Category
- Object name
- Description

2.2.4 Transfer

S7 routing via Ethernet

WinCC flexible 2008 also supports S7 routing via Ethernet.

Possible S7 routing paths:

Source	Target
Ethernet	Ethernet
Ethernet	MPI/PROFIBUS
MPI/PROFIBUS	Ethernet

Supported HMI devices:

TP 177B 4", Mobile Panel 277, MP 177, MP 277, MP 377, WinCC flexible Runtime

Bootstrapping via Ethernet

The following HMI devices now support the transfer of the operating system image (bootstrap) via Ethernet.

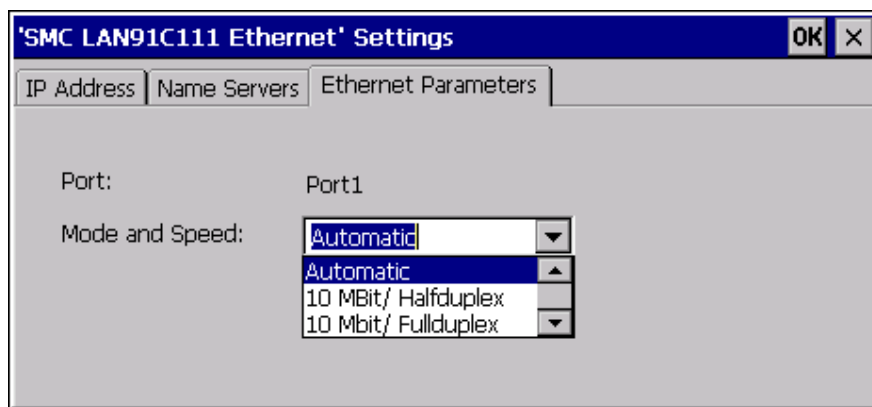
TP 177B 4", MP 377, TP1500 Basic PN, KTP1000 Basic PN, KTP600 Basic color PN, KTP600 Basic mono PN and KTP400 Basic mono PN

Transmission rate of the Ethernet interface

The "Ethernet Parameters" tab was added to the "Ethernet Settings" dialog in the Control Panel of HMI devices MP 177, MP 277 and MP 377.

You can set the following in the "Ethernet Parameters" tab:

- 100 Mbps / full duplex
- 100 Mbps / half duplex
- 10 Mbps / full duplex
- 10 Mbps / half duplex
- Automatic

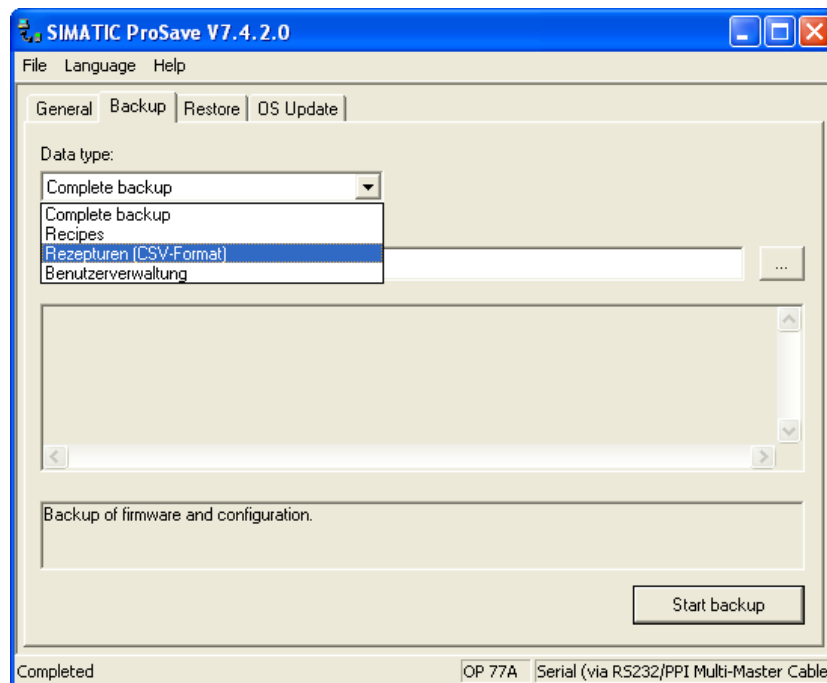


2.2.5 Runtime options

2.2.5.1 ProSave

Enhanced data backup

ProSave now provides an option for backing up or exporting recipe data records to a CSV file.



You can transfer this backup of recipe data to the target device to restore its original state.

Supported HMI devices:

OP77A, TP177A, KTP400 Basic, KTP600 Basic, KTP1000 Basic, TP1500 Basic

2.2.5.2 Sm@rtService/Sm@rtAccess

Service and diagnostics

WinCC flexible/Sm@rtAccess and WinCC flexible/Sm@rtService have changed as follows:

- The options can be used on the new Ethernet-enabled HMI devices:
 - MP 177 6" Touch
 - TP 177B 4"

2.3 HMI devices

2.3.1 Support for new HMI devices

2.3.1.1 New Panel

TP 177B 4"

The TP 177B 4" features a 4.3" TFT display with wide-screen format. This display extends the visible area on the HMI device by approximately 25 % compared to similar displays with 4:3 format. The HMI device also features four function keys with tactile feedback. In combination with the intuitive touch operation, it offers maximum operating efficiency. In addition to MMC cards, the TP 177B 4" supports SD cards and USB memory sticks.

The TP 177B 4" features:

- TFT screen with up to 256 colors
- 480 x 272 pixels resolution
- Backlit LED, dimmable from 20% to 100%
- PROFIBUS interface
- Ethernet port for connection to PROFINET (LAN)
- USB interface
- PROFIBUS DP or PROFINET IO direct keys by means of touch and function keys

The following software options are available for the TP 177B 4":

- WinCC flexible/Sm@rtService
- WinCC flexible /Sm@rtAccess

2.3.1.2 New Multi Panel

MP 177 6" Touch

Multi Panel MP 177 with 6" touch display represents an enhancement of the Multi Panel device family.

All Multi Panels are based on the innovative standard operating system Microsoft Windows CE 5.0. Multi Panels offer enhanced communication options to the office world. All Multi Panels feature a special hardware which provides optimal support for WinAC MP (software PLC).

The MP 177 offers great diversity for applications, high performance and a favorable cost/performance ratio.

The MP 177 features:

- PROFIBUS interface
- Ethernet interface for connection to PROFINET (LAN)
- USB interface
- TFT screen with up to 64k colors

The functionality of MP 177 as a "multifunctional platform" was enhanced with the following software options:

- WinAC MP (software PLC)
- Sm@rtService
- Sm@rtAccess

2.3.1.3 New Panel series

SIMATIC HMI Basic Line

The SIMATIC HMI Basic Line offers touch panels for simple operating and monitoring tasks.

Installation of the SIMATIC HMI Basic Line is compatible with existing touch HMI devices of the Panel and Multi Panel product family. The HMI devices are available with four different display sizes from 4 to 15 inches. All HMI devices are equipped with an Ethernet interface.

WinCC flexible 2008:

- TP1500 Basic PN
- KTP1000 Basic PN, KTP1000 Basic DP

WinCC flexible 2008 SP1:

- KTP600 Basic color PN, KTP600 Basic color DP, KTP600 Basic mono PN
- KTP400 Basic mono PN

2.3.1.4 New panel PCs

New panel PCs

The following Panel PCs can be configured using WinCC flexible 2008:

- Panel PC 477 19" Touch
- Panel PC 677 17" Touch

2.4 Licenses

New WinCC flexible Runtime license

A new license key is available to cover the extended system limits: "WinCC flexible 2008 Runtime (4096)"

Extended system limit

The maximum number of tags within a project was raised to 4096 tags.

Supported HMI devices:

WinCC flexible Runtime, MP 377

WinCC flexible 2008 SP1

3.1 Improved usability

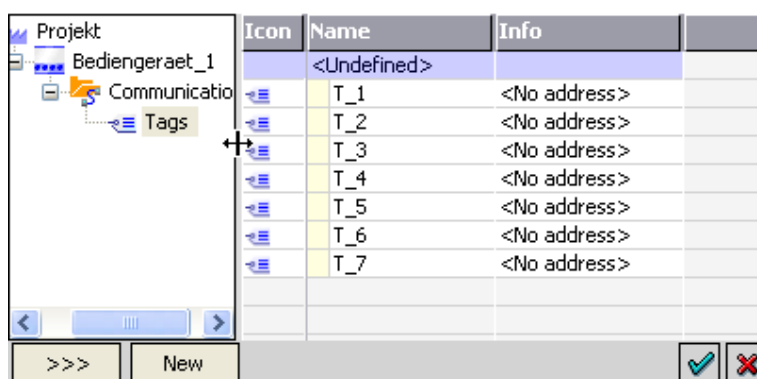
Larger tag selection field

The size of the tag selection field has been extended. This means long tag names can now be read more easily.

Object list saves size

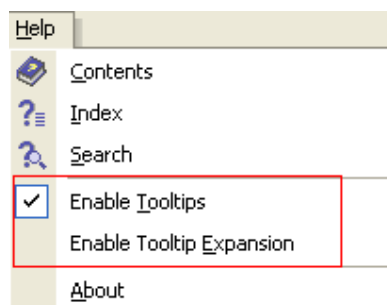
You can adapt the object list to suit your needs. This change will be saved even if you exit WinCC flexible.

The next time you open the object list in WinCC flexible you will not have to adapt the object list.



Tooltip can be switched off

Switch off Tooltip and Tooltip extension in the "Help" menu.



3.2 New functionality and functional enhancements

3.2.1 Editors

3.2.1.1 Logs

Log language

You can specify the log language for data logs, alarm logs, and Audit Trail.

In the "Device Settings" editor, select the language to be used for writing to logs in runtime.

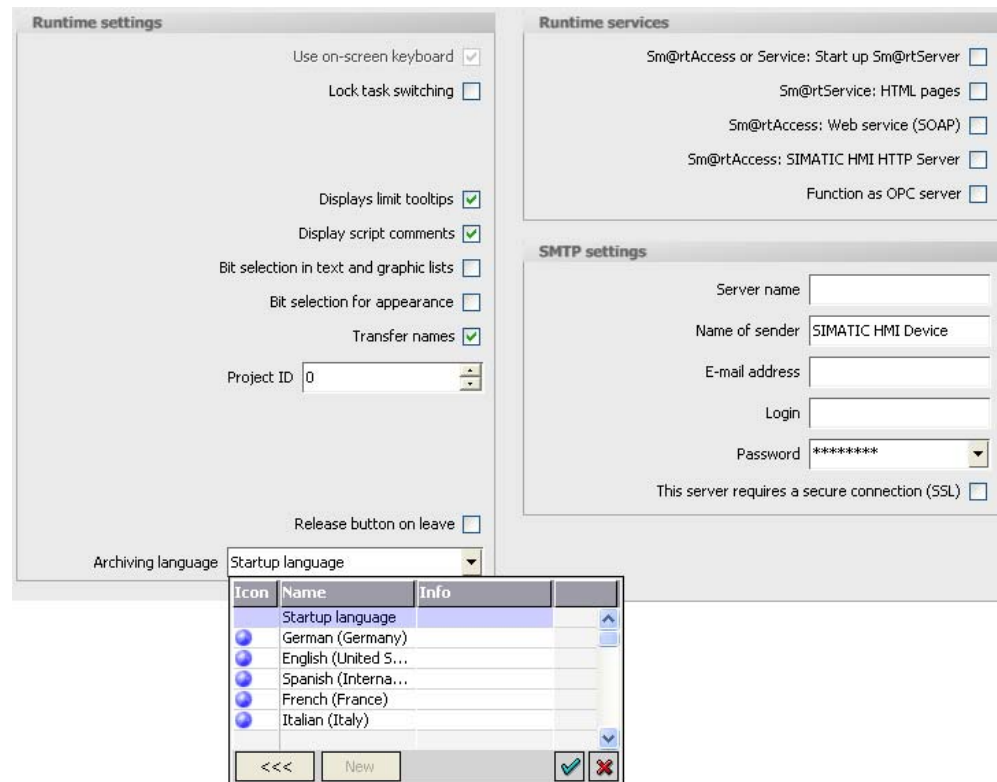


Figure 3-1 "Device settings" editor - log language

The following options are available:

Startup language: The most recently activated runtime language is activated when Runtime restarts.

Runtime language: The logs are always written in the selected language.

Supported HMI devices:

xP 277, MP 377, Mobile Panel 277, Mobile Panel 277 IWLAN, Mobile Panel 277F IWLAN,
WinCC flexible Runtime

Logging of Asian texts

The "TXT (Unicode)" file format supports all characters used in WinCC flexible and WinCC flexible Runtime, for example, Chinese characters.

For editing, you will need software that can save files in Unicode, such as Notepad.

The selection of the storage location was expanded for the "Alarm log" and "Data log" as well as Audit Trail for the "TXT (Unicode)" file format.

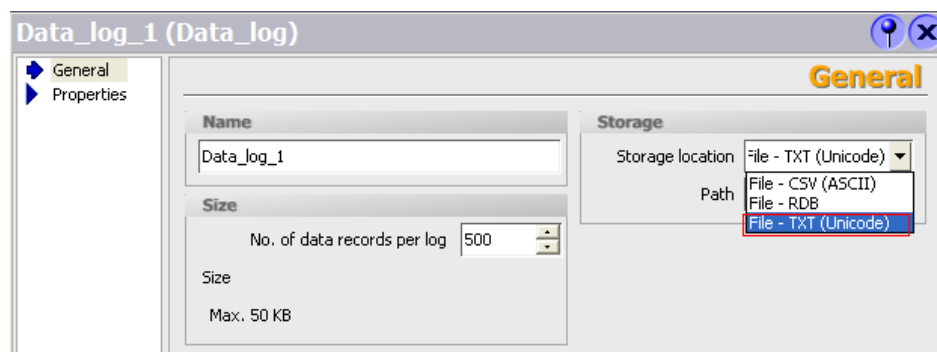


Figure 3-2 Supported data log - TXT (Unicode) file

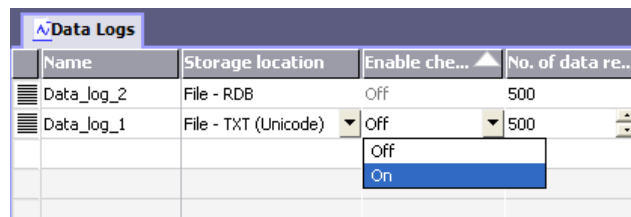
Supported HMI devices:

xP 277, MP 377, Mobile Panel 277, Mobile Panel 277 IWLAN, Mobile Panel 277F IWLAN,
WinCC flexible Runtime

Logs with checksums

In a regulated project or one subject to GMP, you have the option of assigning a checksum to the log data of a data log or alarm log. This checksum ensures that the entry has not been modified subsequently.

(GMP = Good Manufacturing Practice)



Name	Storage location	Enable che...	No. of data re...
Data_log_2	File - RDB	Off	500
Data_log_1	File - TXT (Unicode)	Off	500

Figure 3-3 Example data log - activating the checksum

The checksum can only be calculated for the following:

- Storage location: CSV file or TXT(Unicode) file
- Logging method: "Display system event at" or "Trigger event"

Supported HMI devices:

xP 277, MP 377, Mobile Panel 277, Mobile Panel 277 IWLAN, Mobile Panel 277F IWLAN, WinCC flexible Runtime

Logging alarm texts in Audit Trail

You can now specify if the alarm text of acknowledged alarms is to be saved in Audit Trail.

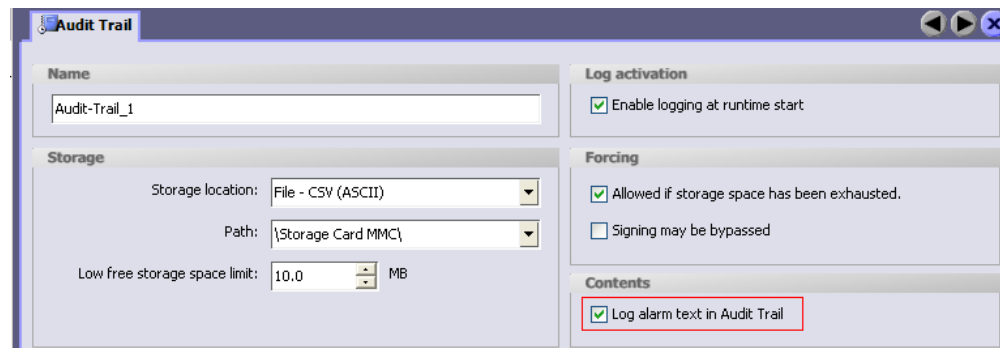


Figure 3-4 "Audit Trail" editor

Supported HMI devices:

xP 277, MP 377, Mobile Panel 277, Mobile Panel 277 IWLAN, Mobile Panel 277F IWLAN, WinCC flexible Runtime

3.2.1.2 Screens

Screen Editor

New "Go to definition" command in the shortcut menu

If the object property is linked to a tag, text list or graphic list in an object, the "Go to definition" command is made available in the shortcut menu, for example, IO field.

Example:

The IO field is linked with a tag. The "Tags" editor is opened with the "Go to definition" command and the corresponding tag is selected.

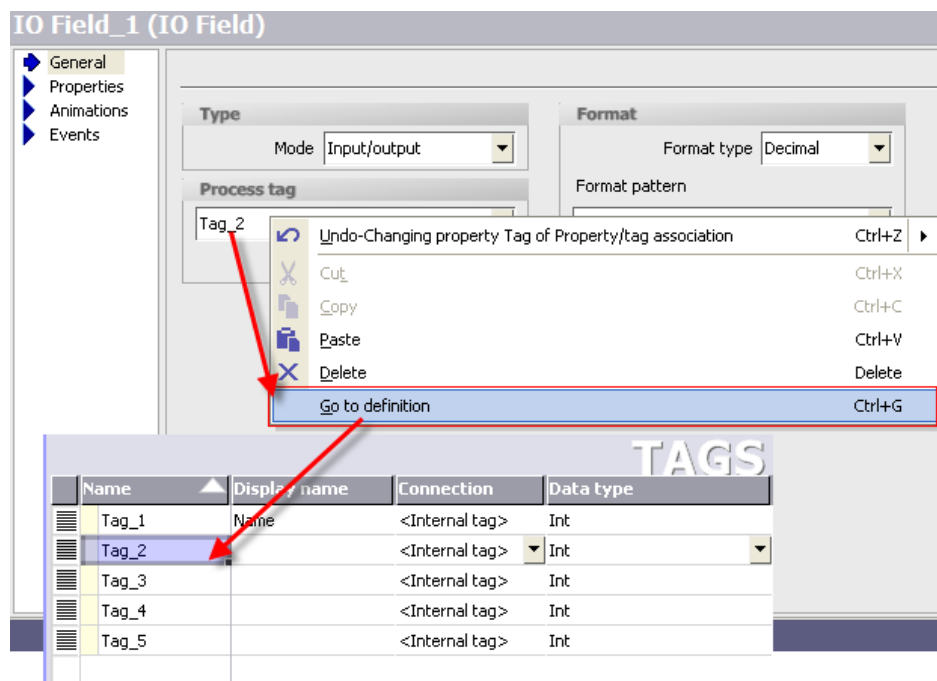


Figure 3-5 IO field - "Go to definition" shortcut menu

3.2.1.3 Recipes

Exporting and importing recipe data with a checksum

In regulated projects subject to GMP, you can assign recipe data with a checksum during an export. The checksums are checked during the import of recipe data. The import is aborted if a checksum is invalid.

(GMP = Good Manufacturing Practice)

1 ExportDataRecordsWithChecksum	
Recipe number/name	1
Data record number/name	0
File name	\Storage Card MMC\record.csv
Overwrite	With confirmation
Output status message	On
Processing status (Out, optional)	<No value>

Supported HMI devices:

xP 277, MP 377, Mobile Panel 277, Mobile Panel 277 IWLAN, Mobile Panel 277F IWLAN, WinCC flexible Runtime

3.2.1.4 Tags

The "Display name" column was added to the "Tags" editor. You can enter a language-dependent name for the "Display name". The configured display name is shown instead of the tag name in the selected runtime language when tags are used in a trend display and in Audit Trail.

Supported HMI devices:

TP 177B 4", MP 177 6", xP 277, MP 377, Mobile Panel 277, Mobile Panel 277 IWLAN, Mobile Panel 277F IWLAN, WinCC flexible Runtime

3.2.1.5 Logs

Printout of Audit Trails

The "Audit Trail" report object is available for the printout of Audit Trail. The report object is only available in regulated projects or those subject to GMP.

(GMP = Good Manufacturing Practice)

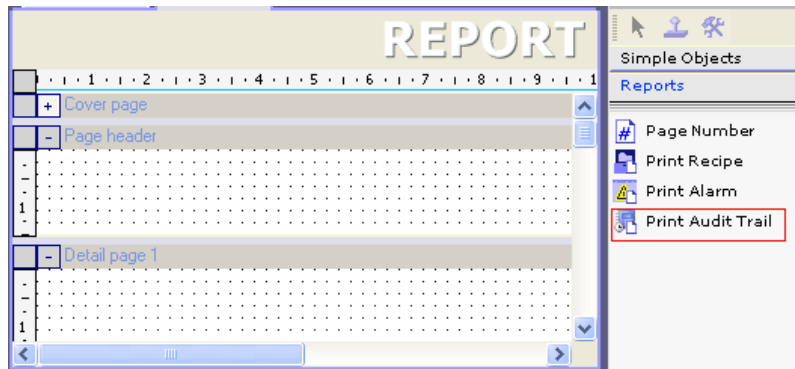


Figure 3-6 Report - Printing Audit Trail

Logging of Audit Trail must first be stopped before you print an Audit in Runtime.

Supported HMI devices:

xP 277, MP 377, Mobile Panel 277, Mobile Panel 277 IWLAN, Mobile Panel 277F IWLAN,
WinCC flexible Runtime

3.2.1.6 System alarms

"Incoming" event

The "Incoming" event occurs when a system alarm is triggered and displayed in the alarm view. You can configure functions or scripts for the alarm. The configured functions or scripts are then executed when the system alarm occurs.

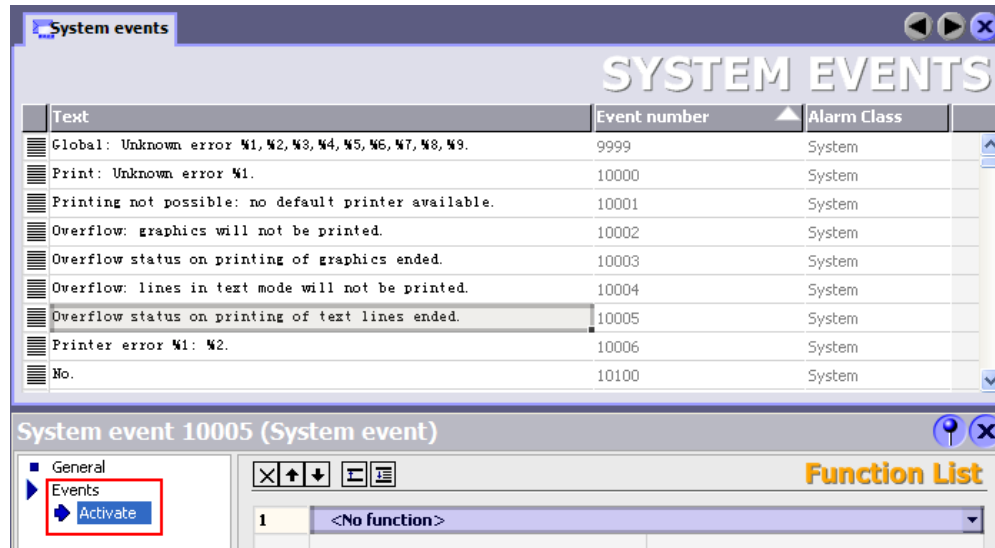


Figure 3-7 "System alarms" editor - "Incoming" event

Supported HMI devices:

OP 77B, xP 177, xP 277, MP 377, Mobile Panel 277, Mobile Panel 277 IWLAN, Mobile Panel 277F IWLAN, WinCC flexible Runtime

3.2.2 Transfer

Indirect transfer with "Pack & Go"

The "Use Pack & Go" option was added to the "Transfer setting" dialog.

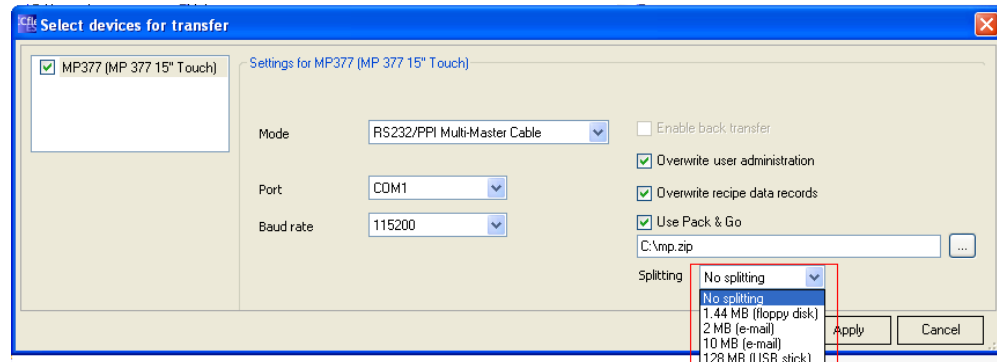


Figure 3-8 Transfer - Pack & Go

If this option is selected, a ZIP file is created for the WinCC flexible project on the configuration PC. You can also specify if the WinCC flexible project should be divided into several ZIP files, for example, 2 MB files for sending per e-mail. The configuration PC is not connected to the HMI device while the "Pack & Go" file is being generated.

You can unzip the file on another PC, the transfer PC. The transfer PC does not require a WinCC flexible installation, but it is connected to the HMI device.

Supported HMI devices:

OP 73micro, TP 177micro, OP 73, OP 77A, OP 77B, MP 177, TP 177A, TP/OP 177B, xP 277, MP 377, Mobile Panel 177, Mobile Panel 277 IWLAN, Mobile Panel 277F IWLAN, TP1500 Basic PN, KTP1000 Basic PN, KTP600 Basic color PN, KTP600 Basic mono PN, KTP400 Basic mono PN

Updating modified characteristics for the operating system

The transfer has so far been aborted if the image of the operating system of a Windows CE panel was not compatible with the configuration. The operating system had to be updated manually.

With WinCC flexible 2008 SP1, a message appears asking if you wish to update the operating system. If you click "Yes", the operating system is updated automatically.

3.2.3 Runtime options

3.2.3.1 Sm@rtService/Sm@rtAccess

Hidden password entry via Sm@rtClient

Password input at the Sm@rtServer

If you enter the password directly on the Sm@rtServer, the following message is displayed on the Sm@rtClient instead of the on-screen keyboard of the server: "Remote access by Sm@rt Options is in progress. Please wait until password has been entered." This setup prevents that keyboard input is displayed on the Sm@rtClient when you enter the password.

Password input at the Sm@rtClient

The on-screen keyboard is hidden on the Sm@rtServer due to the actions carried out on the Sm@rtClient. The local on-screen keyboard is shown for entries on the Sm@rtClient instead.

Supported HMI devices

xP 177, xP 270, xP 277, MP 370, MP 377, Mobile Panel 177, Mobile Panel 277, Mobile Panel 277 IWLAN, Mobile Panel 277F IWLAN, WinCC flexible Runtime

Secure sending of emails

To ensure secure transmission of e-mails, you can now use SMTP servers that support SMTP AUTH (authentication).

The following authentication modes can be configured:

- Authentication by means of a valid e-mail address
- Authentication by means of user name and password

Data can also be encrypted and sent via an SSL connection. This means the data cannot be manipulated or read.

You can make the settings in the "Device Settings" editor or in the Control Panel of the HMI device.

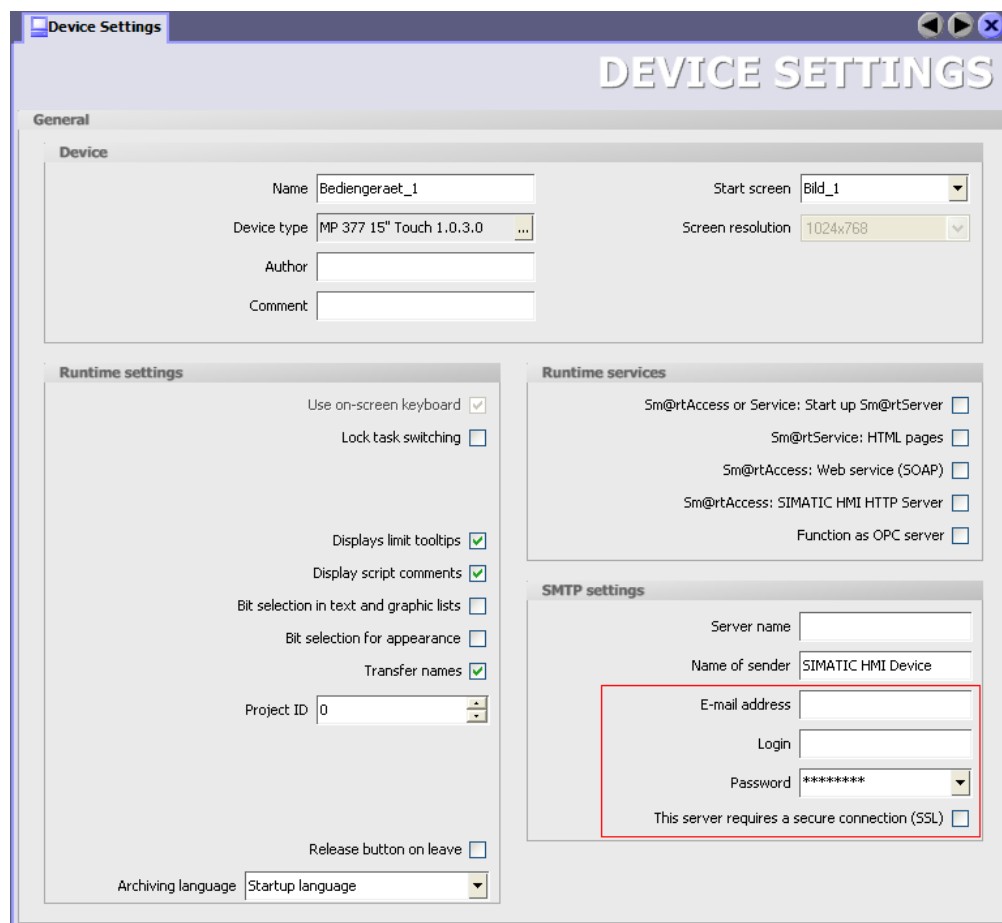


Figure 3-9 "Device settings" editor - SMTP settings

Supported HMI devices

xP 177 , xP 277 , MP 377 , Mobile Panel 177 , Mobile Panel 277 , Mobile Panel 277 IWLAN, Mobile Panel 277F IWLAN, WinCC flexible Runtime

3.3 HMI devices

3.3.1 Printing via print server

Introduction

Print servers enable access to network printers. Print jobs are routed to a corresponding printer via the print server.

Requirements

- The print server deploys the "RAW" mode.

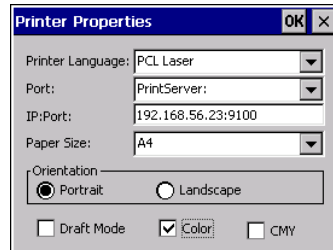
Note

For additional information on settings, refer to the relevant print server documentation.

- The Panel is interconnected via Ethernet with the print server or with a printer featuring an integrated print server.
- External print servers are interconnected with a printer via USB port.
- The IP address and port used are identical in the "Printer Properties" of the HMI device and on the print server.

Procedure

1. Open the "Control Panel" on your HMI device.
2. Select "Printer". The "Printer Properties" dialog box opens.



3. Select a printer from the "Printer Language" selection list.
4. Select the "PrintServer" entry from the "Port" selection list.
5. Enter the IP address and the port used for communication with the printer in the "IP:Port" input field.

Note

Use the ":" character as delimiter between the IP address and the port number. For example: "192.168.56.23:9100".

6. Select any additional printer settings.

Result

After the print job was initiated, the HMI device transfers the print job to the printer via the print server.

Note

Printing takes place via the print server for the following HMI devices:

- xP 177, Mobile Panel 177
 - xP 277, Mobile Panel 277, Mobile Panel 277 IWLAN, Mobile Panel 277F IWLAN
 - Mobile Panel 277 IWLAN V2, Mobile Panel 277F IWLAN V2, Mobile Panel 277F IWLAN (RFID Tag)
 - MP 377
 - PC with WinCC flexible Runtime
-

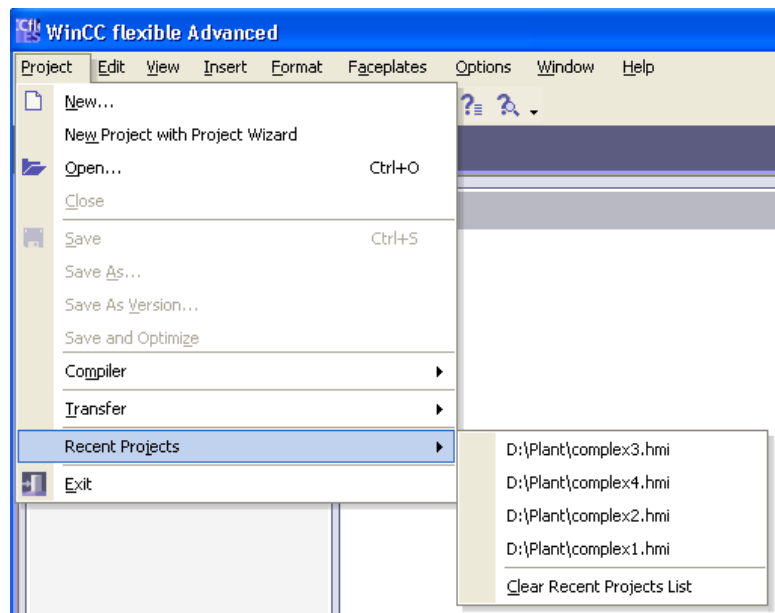
WinCC flexible 2008 SP2

4.1 Engineering and usability

New menu entry in "Project" menu

WinCC flexible saves the most recently opened projects in a list. You can clear the list of most recently opened projects using the "Project" menu.









Menu > Last opened projects > Clear last opened projects



Object view shows additional information




- Tag comments

The tag comments are listed in the object view.

Object:			
Icon	Name	Info	Comment
	VClosed	DB 1 DBW 8	Pompe1: Close valve
	VClosed_1	DB 1 DBW 12	Pompe2: Close valve
	VClosed_2	DB 1 DBW 14	Pompe3: Close valve
	VClosed_3	DB 1 DBW 16	Pompe4: Close valve
	VOpen	DB 1 DBW 0	Pompe1: Open valve
	VOpen_1	DB 1 DBW 2	Pompe 2: Open valve
	VOpen_2	DB 1 DBW 4	Pompe 3: Open valve
	VOpen_3	DB 1 DBW 6	Pompe4: Open valve

- Recipe number

The object view shows the unique recipe number.

Object:		
Icon	Name	Info
	Juice	Recipe No. 1
	Limits	Recipe No. 2
	Program_Set	Recipe No. 3

New wide screen resolution for WinCC flexible Runtime

Additional wide screen resolutions are now available for WinCC flexible Runtime:

- 1440 x 900
- 1680 x 1050
- 1920 x 1080
- 1920 x 1200

4.2 New functionality and functional enhancements

4.2.1 Communication

Modicon Modbus TCP/IP

The following Basic Panels can communicate the with following controls via Modbus TCP/IP:

- HMI device
 - KTP400 Basic PN
 - KTP600 Basic PN
 - KTP1000 Basic PN
 - KTP1500 Basic PN
- Modicon PLC
 - TSX Compact
 - TSX Quantum
 - Momentum
 - Premium
 - Micro

Mitsubishi FX

The following HMI devices can communicate with a Mitsubishi FX control via RS422:

- HMI device
 - KTP600 Basic DP
 - KTP1000 Basic DP
 - OP 77A
 - TP 177A

Omron Hostlink/Multilink

The following HMI devices can communicate with an Omron control via RS-422:

- HMI device
 - KTP600 Basic DP
 - KTP1000 Basic DP
 - OP 77A
 - TP 177A

4.2.2 Sm@rtService/Sm@rtAccess

4.2.2.1 Performance

Introduction

Not only the functions but also the performance for WinCC flexible 2008 SP2 has been improved.

The performance was enhanced through the following improvements:

- Reduced CPU utilization due to Sm@rtServer

Reduced CPU utilization due to Sm@rtServer

If the CPU utilization is reduced, other applications will run faster. Enhanced performance of the Sm@rtServer improves the update of the Sm@rtClient.

Supported HMI devices:

WinCC flexible Runtime, MP 377, MP 277, Mobile Panel 277, MP 177, TP 177 4"

4.2.2.2 Automatic scaling

So far the display of the transmitted server desktop has been scaled according to your entries on the Sm@rtClient.

As of SP2 of WinCC flexible 2008, automatic scaling of the display on the Sm@rtServer is supported.

Automatic scaling depends on the resolution and the aspect ratio. You can only reduce the display of the transmitted server desktop but not enlarge it.

- Same aspect ratios

The display of the server desktop will be adapted to the Sm@rtClient by the Sm@rtServer without distortion.

- Different aspect ratios

The display of the server desktop will be adapted to the Sm@rtClient by the Sm@rtServer with the aspect ratio. The "empty" areas on the Sm@rtClient will be filled with black. This may result in black bars above or below or to the right or left of the screen.

- Automatic scaling will transmit the image of the server desktop in an optimized, reduced resolution to the client.

Advantages

- Automatic adaptation to different clients
- Reduced CPU utilization on the clients
- Reduced network load

Supported HMI device:

WinCC flexible Runtime as Sm@rtServer

4.2.2.3 Revised configuration dialogs

For WinCC flexible 2008 SP2, new functions have been added to existing functions of the Sm@rtServer and Sm@rtClient.

The layout of the configuration dialogs has been revised to improve usability.

- The settings are now grouped according to their functions in the respective tabs.

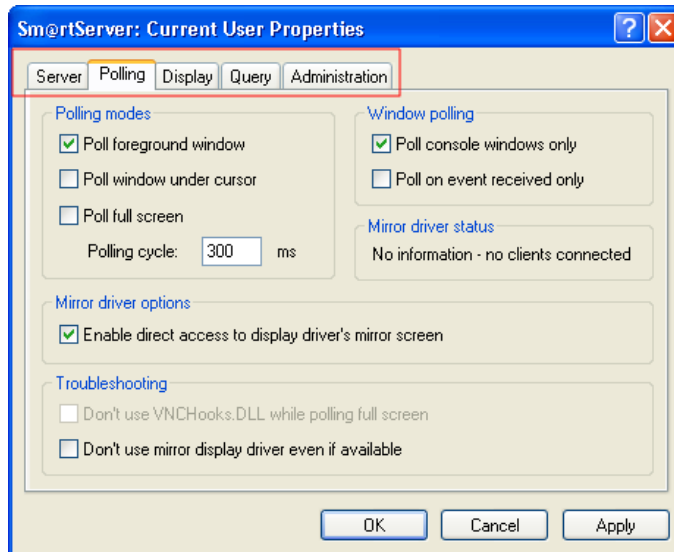


Figure 4-1 Dialog "Sm@rtServer: Current User Properties"

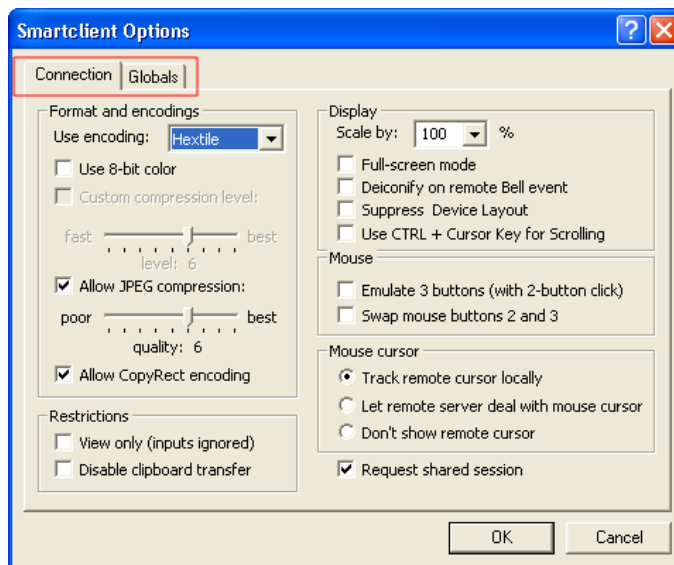
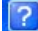


Figure 4-2 "Sm@rtClient Options" dialog

- You will receive information on the settings using direct help. To show the direct help, click on  in the title bar and then on the respective setting.

4.3 HMI devices

4.3.1 Mobile Panel

Mobile Panel 277F IWLAN (RFID Tag)

Use WinCC flexible 2008 SP2 to configure the new device version Mobile Panel 277F IWLAN (RFID Tag). Instead of an effective range module, the Mobile Panel 277F IWLAN (RFID Tag) comes equipped with an RFID module. The RFID module meets ISO 5693 quality standards.

V2 of existing Mobile Panels

The Mobile Panel 277 IWLAN V2 and the Mobile Panel 277 IWLAN V2 are offered in the variants already known from Mobile Panel 277F IWLAN.

It also provides the following new features:

- SIMOTION support
- Rapid Roaming iPCF-MC
Uninterruptable change in between access points.
- Transponder V2
Coexistence in the 2.4 and 5 GHz band
- additional wireless approval, for example in China
- Improved operation

4.3.2 Enhancements in the Basic Panels

Retentive message buffer

The content of the internal message buffer will remain intact even after restart of the HMI device.

If you are already working with Basic Panels, you can activate the retentive message buffer without changing the hardware. You only need to update the operating system image.

Support of additional system functions

The following system functions are supported by the Basic Panels with WinCC flexible 2008 SP2:

- SetBitInTag
- ResetBitInTag
- InvertBitInTag

Expanded quantity framework

The number of tags in a project has been increased.

	Number of tags in the project	
	Previously	WinCC flexible 2008 SP2
KTP400 Basic	128	250
KTP600 Basic KTP1000 Basic TP1500 Basic	256	500

4.3.3 Accessories

SD Card

For the following HMI devices, you can use SD Cards in addition to Multi Media Cards:

- OP77B
- Mobile Panel 177B mono 6" DP, Mobile Panel 177B Color 6" PN/DP
- OP 177B mono 6" DP, OP 177B color 6" PN/DP
- OP 277 6"
- TP 277 6"

Maintenance-free UPS

The following uninterruptible 24 VDC UPS power supply with highly capacitive double-layer capacitors will be supported:

- SITOP UPS500S

4.4 Operating systems

Support for new operating systems

The following operating systems are supported:

WinCC flexible 2008 SP2

	WinCC flexible 2008 SP2	WinCC flexible 2008 SP2 Micro	WinCC flexible 2008 SP2 Runtime
Windows XP Home SP 3	--	x	--
Windows XP Professional SP3	x	x	x
Windows 7 Professional	x	x	x
Windows 7 Ultimate/Enterprise	x	x	x

WinCC flexible 2008 SP3

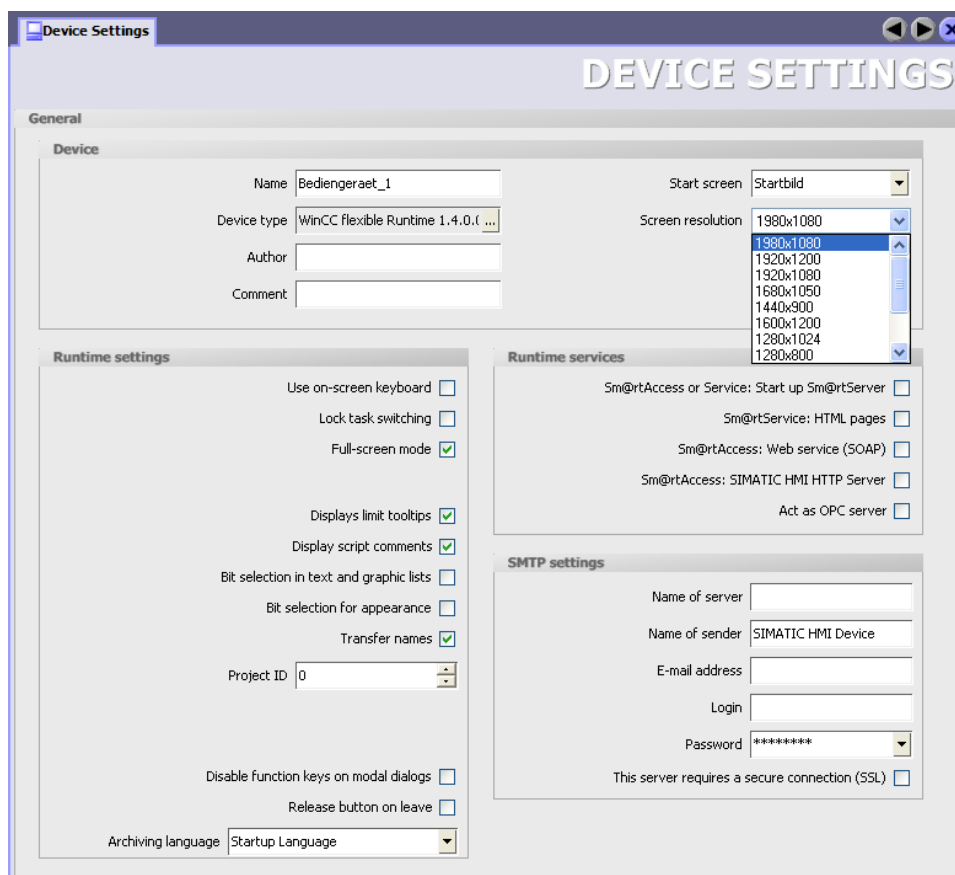
5.1 New functionality and functional enhancements

5.1.1 Screens

New widescreen resolution for WinCC flexible Runtime

Additional widescreen resolutions in widescreen format are now available for WinCC flexible Runtime: Screen resolutions in 16:10 widescreen format for IPC277D are offered with WinCC flexible 2008 SP3:

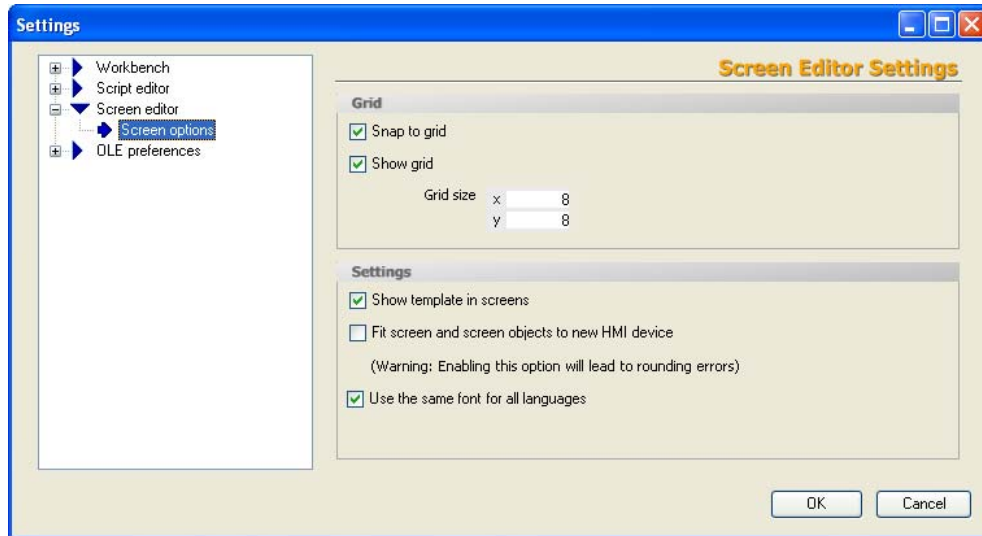
- 800 x 480
- 1,280 x 800
- 1980x1080



Settings for the screen solution with change of HMI device

If you change from an HMI device with 4:3 resolution to an HMI device with widescreen format, observe the following:

1. Open the menu "Extras > Settings". A dialog box opens.
2. Click on "Editor "Screen" > Settings for Editor "Screen"".
3. Disable the setting "Fit screens and screen objects to new HMI device".

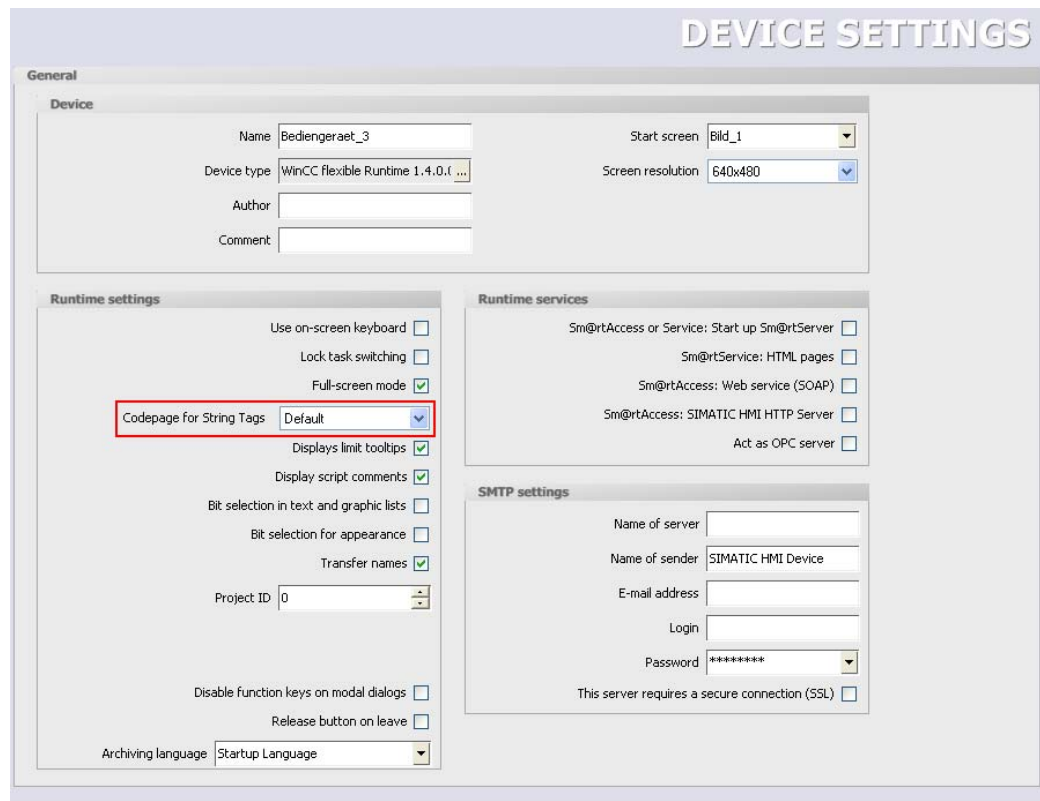


5.1.2 Character set for Chinese characters

Chinese character set in Runtime

For connection to SIMATIC S7 300/400 now also Chinese characters are supported for the data type "String".

Activate the options "Chinese (PRC)" in the engineering system. CP936 is now used in Runtime instead of the ASCII code page.



1. Open the "Project languages" editor in the "Language support" folder.
2. Activate the language
 - Chinese (PRC) or
 - Chinese (Singapore).
3. Open the "Languages and fonts" editor.
4. Activate "Chinese (People's Republic of China)" or "Chinese (Singapore)" as Runtime language.
5. Open the editor "Device settings" to activate the option.
6. Select the option "Chinese (PRC)" for "Code-page for string tags" under "Settings in Runtime".

5.2 HMI devices

5.2.1 Multi Panel

MP 377 15" Touch Daylight

The Multi Panel MP 377 Touch Daylight with a 15" touch screen represents an expansion of the Multi Panel device series.

The MP 377 Touch Daylight offers a variety of application uses, high performance, and a favorable cost/performance ratio. The range of functions of the MP 377 Touch Daylight corresponds to the range of the MP 377 series.

However the following differences must be observed:

Limited functionality in the following areas

- Direct keys
- System function "ActivateCleanScreen"
- "Sm@rtServer: Current User Properties" dialog
- Screen saver

New system function

The following system functions are supported by MP 377 Touch Daylight with WinCC flexible 2008 SP3:

- SetBrightness

5.3 Communication

Communication via SIMOTION with Mobile Panel V2 for error-free operation

The following Mobile Panels can communicate via SIMOTION:

- Mobile Panel 277F IWLAN V2
- Mobile Panel 277F IWLAN (RFID) V2

Proceed as follows to configure a communication via SIMOTION:

1. Insert a PLC into SIMATIC STEP7 Manager for
 - SIMOTION
 - S7 300/400 for error-free operation
2. Create a Mobile Panel V2 in WinCC flexible.
3. Create a connection to each PLC in the "Connections" editor.
4. After the compilation transfer the project to a Mobile Panel for error-free operation.

5.4 Transfer

Transfer via S7Ethernet

You can now use the "S7Ethernet" mode in the "Transfer settings" dialog for the following HMI devices:

- OP 177B
- TP 177B
- Mobile Panel 177
- OP 277
- TP 277
- OP77B

5.5 Operating systems

Support for new operating systems

The following operating systems are supported:

WinCC flexible 2008 SP3

	WinCC flexible 2008 SP3	WinCC flexible 2008 SP3 Micro	WinCC flexible 2008 SP3 Runtime
Windows XP Home SP 3	--	x	--
Windows XP Professional SP3	x	x	x
Windows XP Embedded SP2	--	--	x
Windows XP Embedded Standard 2009	--	--	x
Windows 7 Professional (32-bit)	x	x	x
Windows 7 Professional SP1 (32-bit)	x	x	x
Windows 7 Ultimate/Enterprise (32-bit)	x	x	x
Windows 7 Ultimate/Enterprise SP1 (32-bit)	x	x	x
Windows 7 Embedded Standard (32-bit)	--	--	x
Windows 7 Embedded Standard SP1 (32-bit)	--	--	x
Windows 7 Professional (64-bit)	x	x	x
Windows 7 Professional SP1 (64-bit)	x	x	x
Windows 7 Ultimate/Enterprise (64-bit)	x	x	x
Windows 7 Ultimate/Enterprise SP1 (64-bit)	x	x	x

Index

A

- Alarm log
 - Checksum, 34
 - Log language, 32
 - RDB, 13
 - TXT (Unicode), 33
- Audit trail
 - Logging alarm text, 34
- Audit Trail
 - Log language, 32
 - TXT (Unicode), 33

D

- Data log
 - Checksum, 34
 - Creating, 34
 - Log language, 32
 - RDB, 13
 - TXT (Unicode), 33
- Discrete alarms
 - Trigger address, 20

E

- Ethernet
 - Bootstrapping, 23
 - S7 routing, 23
- Ethernet interface
 - Transmission rate, 24
- Extended system limit, 30

F

- Faceplate
 - Aspect ratio, 20
 - Exporting texts, 20
 - Importing texts, 20
- Function keys
 - Disabling, 21

G

- Groups
 - Excluding password aging, 16

H

- HMI device
 - New Multi Panel, 28
 - New Panel, 27
 - SIMATIC HMI Basic Line, 29

M

- Modal dialogs
 - Disable the function keys, 21

N

- New
 - WinCC flexible Runtime license, 30
- New event
 - Incoming, 38
 - On Finish Input, 19
 - Release, 19
 - When dialog is closed, 21
 - When dialog is opened, 21
- New logging format
 - RDB, 13
- New menu command
 - CSV export, 14
 - CSV import, 14
- New system function
 - EncodeEx, 22
 - SetDaylightSaving, 22

O

- Operating system, 61
 - Windows 7, 54
- OS update, 39
- Output field
 - Button, 17
 - Switch, 17
 - Symbolic I/O field, 17

Text field, 17
Text list, 17

P

Print server, 42
Printing
 Print server, 42
ProSave
 Enhanced data backup, 25

R

RDB
 New logging format, 13
Recipes
 Checksum, 36
Report
 Print Audit Trail, 37
RT option
 Sm@rtAccess, 26
 Sm@rtService, 26
Runtime security settings
 Adjustable number of login attempts, 15
 Group number hierarchy, 15
 Login using password exclusively, 15

S

SD Card, 53

T

Tag
 Display name, 36
Transfer
 Pack & Go, 39
 S7Ethernet, 60
Transmission rate
 Ethernet interface, 24

U

User view
 Hidden password input, 16

W

What's new?, 5, 7, 9, 11

CSV export, 14
CSV import, 14
WinCC flexible 2008, 5
WinCC flexible 2008 SP1, 7
WinCC flexible 2008 SP2, 9
WinCC flexible 2008 SP3, 11
WinCC flexible/Sm@rtAccess, 26
WinCC flexible/Sm@rtService, 26