

SIEMENS

Ingenuity for life



Data2Unified Add-In Instructions

SIMATIC HMI Comfort Panels, WinCC Runtime
Advanced, SIMATIC HMI Unified Comfort Panels,
SIMATIC WinCC Unified V16

<https://support.industry.siemens.com/cs/ww/en/view/109770510>

Siemens
Industry
Online
Support



Legal information

Use of application examples

Application examples illustrate the solution of automation tasks through an interaction of several components in the form of text, graphics and/or software modules. The application examples are a free service by Siemens AG and/or a subsidiary of Siemens AG ("Siemens"). They are non-binding and make no claim to completeness or functionality regarding configuration and equipment. The application examples merely offer help with typical tasks; they do not constitute customer-specific solutions. You yourself are responsible for the proper and safe operation of the products in accordance with applicable regulations and must also check the function of the respective application example and customize it for your system.

Siemens grants you the non-exclusive, non-sublicensable and non-transferable right to have the application examples used by technically trained personnel. Any change to the application examples is your responsibility. Sharing the application examples with third parties or copying the application examples or excerpts thereof is permitted only in combination with your own products. The application examples are not required to undergo the customary tests and quality inspections of a chargeable product; they may have functional and performance defects as well as errors. It is your responsibility to use them in such a manner that any malfunctions that may occur do not result in property damage or injury to persons.

Disclaimer of liability

Siemens shall not assume any liability, for any legal reason whatsoever, including, without limitation, liability for the usability, availability, completeness and freedom from defects of the application examples as well as for related information, configuration and performance data and any damage caused thereby. This shall not apply in cases of mandatory liability, for example under the German Product Liability Act, or in cases of intent, gross negligence, or culpable loss of life, bodily injury or damage to health, non-compliance with a guarantee, fraudulent non-disclosure of a defect, or culpable breach of material contractual obligations. Claims for damages arising from a breach of material contractual obligations shall however be limited to the foreseeable damage typical of the type of agreement, unless liability arises from intent or gross negligence or is based on loss of life, bodily injury or damage to health. The foregoing provisions do not imply any change in the burden of proof to your detriment. You shall indemnify Siemens against existing or future claims of third parties in this connection except where Siemens is mandatorily liable.

By using the application examples you acknowledge that Siemens cannot be held liable for any damage beyond the liability provisions described.

Other information

Siemens reserves the right to make changes to the application examples at any time without notice. In case of discrepancies between the suggestions in the application examples and other Siemens publications such as catalogs, the content of the other documentation shall have precedence.

The Siemens terms of use (<https://support.industry.siemens.com>) shall also apply.

Security information

Siemens provides products and solutions with industrial security functions that support the secure operation of plants, systems, machines and networks.

In order to protect plants, systems, machines and networks against cyber threats, it is necessary to implement – and continuously maintain – a holistic, state-of-the-art industrial security concept. Siemens' products and solutions constitute one element of such a concept.

Customers are responsible for preventing unauthorized access to their plants, systems, machines and networks. Such systems, machines and components should only be connected to an enterprise network or the Internet if and to the extent such a connection is necessary and only when appropriate security measures (e.g. firewalls and/or network segmentation) are in place. For additional information on industrial security measures that may be implemented, please visit <https://www.siemens.com/industrialsecurity>.

Siemens' products and solutions undergo continuous development to make them more secure. Siemens strongly recommends that product updates are applied as soon as they are available and that the latest product versions are used. Use of product versions that are no longer supported, and failure to apply the latest updates may increase customer's exposure to cyber threats.

To stay informed about product updates, subscribe to the Siemens Industrial Security RSS Feed at: <https://www.siemens.com/industrialsecurity>.

Table of Contents

	Legal information	2
1	Introduction	4
1.1	Overview.....	4
1.2	Principle of Operation.....	4
1.3	“Data2Unified” Add-In User Interface.....	5
1.4	Components Used.....	5
2	General	6
2.1	Requirements	6
2.2	Supported Devices	6
2.3	Supported TIA Portal Project Elements	6
3	Engineering	8
3.1	Adding User to User Group	8
3.2	Enabling the Add-In	10
3.3	Operation.....	11
3.4	Analyzing Log Files	15
3.4.1	Components of the Log File	15
3.4.2	Opening Log File with Microsoft Excel	16
3.5	Error Handling	17
3.5.1	Add-In is Missing in the TIA Portal Context Menu	17
3.5.2	Device Cannot be Selected Under “Select Device”	17
3.5.3	Connection or PLC Tag is Displayed with a Red Background	17
4	Appendix	19
4.1	Service and support	19
4.2	Links and literature	20
4.3	Change documentation	20

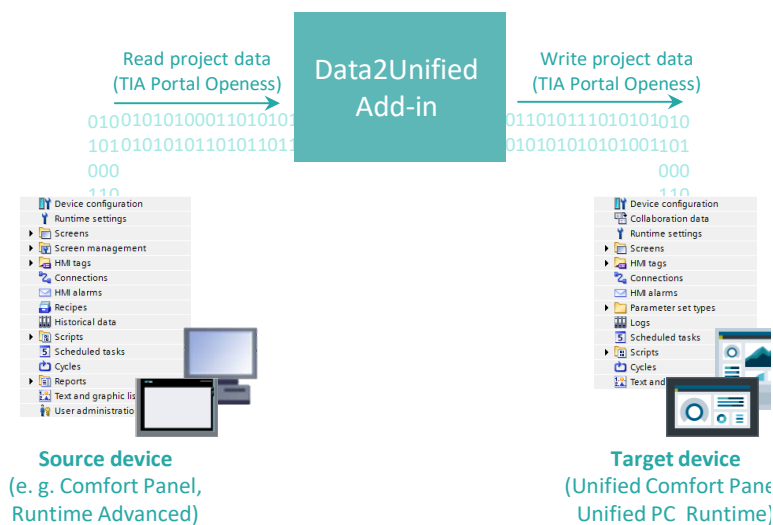
1 Introduction

1.1 Overview

SIMATIC WinCC Unified is the all-new visualization system from Siemens for automation applications. The SIMATIC WinCC Unified System consists of the SIMATIC WinCC visualization software and the new SIMATIC HMI Unified Comfort Panels.

The “Data2Unified” add-in offers you the possibility to convert your configuration contents into a WinCC Unified configuration so that you do not have to recreate the contents of your previous configurations from scratch.

1.2 Principle of Operation



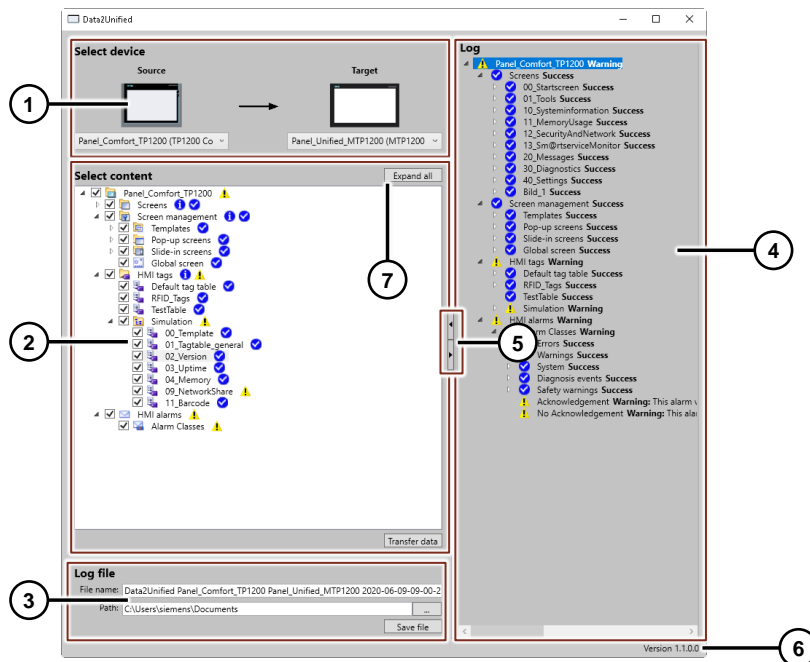
The “Data2Unified” add-in accesses the project contents of the devices via the Openness interface of the TIA Portal. It extracts the content from the source devices and re-creates it in the Unified target device.

Note The “Data2Unified” add-in is under continuous development, which will gradually allow it to support additional TIA Portal project elements.

The link to download the latest version of the add-in is available within this article.

1.3 “Data2Unified” Add-In User Interface

Note The user interface and the event log (“Log file”) are only available in English.



- ① Selection area for source and target device ("Select device")
- ② Configuration area for project data of the source device ("Select content")
- ③ Configuration area of the log file ("Log file")
- ④ Overview of the conversion result
- ⑤ Speedy Splitter, changing the size of the conversion area
- ⑥ Version number
- ⑦ Expand/Collapse all project data

1.4 Components Used

This application example was created with the following hardware and software components:

Components	Quantity	Item number	Note
SIMATIC WinCC Unified Engineering V16	1	6AV2153-....1-6...	-
SIMATIC WinCC Unified PC Runtime V16	1	6AV2154-....1-6...	-
PC Station with WinCC Runtime Advanced V16	1	6AV2104-....6-0...	-
SIMATIC HMI Comfort Panel TP1200	1	6AV2124-0MC01-0AX0	Alternatively, any other SIMATIC HMI Comfort Panel can be used.
SIMATIC HMI Unified Comfort Panel MTP1200	1	6AV2128-3MB06-0AX0	Alternatively, any other SIMATIC HMI Unified Comfort Panel can be used.

2 General

2.1 Requirements

To use the “Data2Unified” add-in, the following requirements must be met:

- SIMATIC WinCC Unified V16 must be installed.
- The project must be upgraded to TIA Portal V16.
- At least one supported source and target device must be configured in the project.

2.2 Supported Devices

The following table shows you which devices in the TIA Portal are supported by the “Data2Unified” add-in.

Table 2-1

Device family	supported by the “Data2Unified” add-in
Panel-based	
Basic Panels	x
Comfort Panels	✓
Comfort Panels PRO	✓
Outdoor Panels	✓
Mobile Panels	✓
PC-based	
Runtime Advanced	✓
Runtime Professional	x

2.3 Supported TIA Portal Project Elements

The following contents are supported by version V1.1.0.0 of the “Data2Unified” add-in for conversion to SIMATIC WinCC Unified:

Screen objects

Following elements are supported:

- Basic objects (e. g. Text box, Graphic view, Rectangle)

Note Screen objects that are bound to a style can only be converted correctly to a limited extent.

Note The property "fill pattern" is not yet supported correctly. In WinCC Unified, the background is always displayed "solid" with the background color that is configured in the SIMATIC HMI Comfort Panel.

Note Conversion of animation of basic objects are not supported in this version.

Screens

Following elements are supported:

- Screens

Note

After you have converted the screens and screen management elements, you must manually create the image hierarchy with screen windows in WinCC Unified.

Further information, such as how to create templates and pop-ups under WinCC Unified, can be found in the application example "Guide to switching from Comfort Panels to Unified Comfort Panels" (available expected 07/2020)

<https://support.industry.siemens.com/cs/ww/en/view/109768002>

Note

Conversion of animation and events of screens are not supported in this version.

Screen management

Following elements are supported:

- Templates
- Pop-up screens
- Slide-in screens
 - Note:** Conversion of slide-in screens are only possible, if they are activated inside the engineering.
- Global screen

Note

After you have converted the screens and screen management elements, you must manually create the image hierarchy with screen windows in WinCC Unified.

Further information, such as how to create templates and pop-ups under WinCC Unified, can be found in the application example "Guide to switching from Comfort Panels to Unified Comfort Panels" (available expected 07/2020)

<https://support.industry.siemens.com/cs/ww/en/view/109768002>

Note

Conversion of animation and events of screen management elements are not supported in this version.

HMI tags

Following elements are supported:

- Tag tables
- Tags

Note

Conversion of UDT structures are not supported by the current version and must be created manually under WinCC Unified.

HMI alarms

Following elements are supported:

- Discrete alarms
- Analog alarms
- Alarm classes

3 Engineering

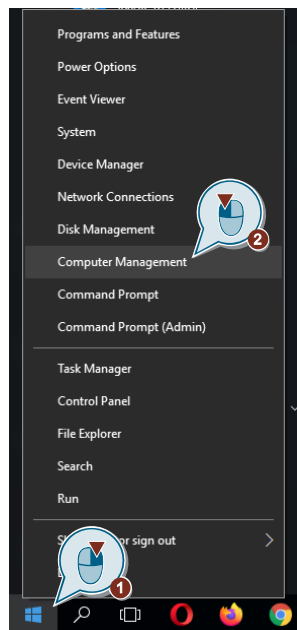
3.1 Adding User to User Group

To use the Data2Unified add-in, the user on the engineering computer must belong to the “Siemens TIA Openness” user group. Without the assignment, no access to the project files is possible.

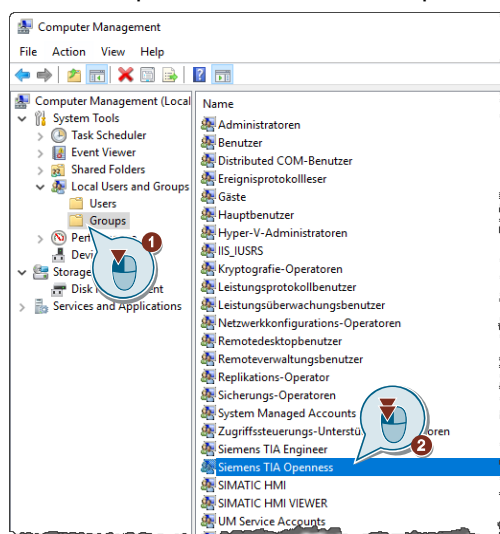
How to assign a new user to the “Siemens TIA Openness” user group is described below.

Adding users to the TIA Openness group

1. Right-click on the Windows icon and open Computer Management.

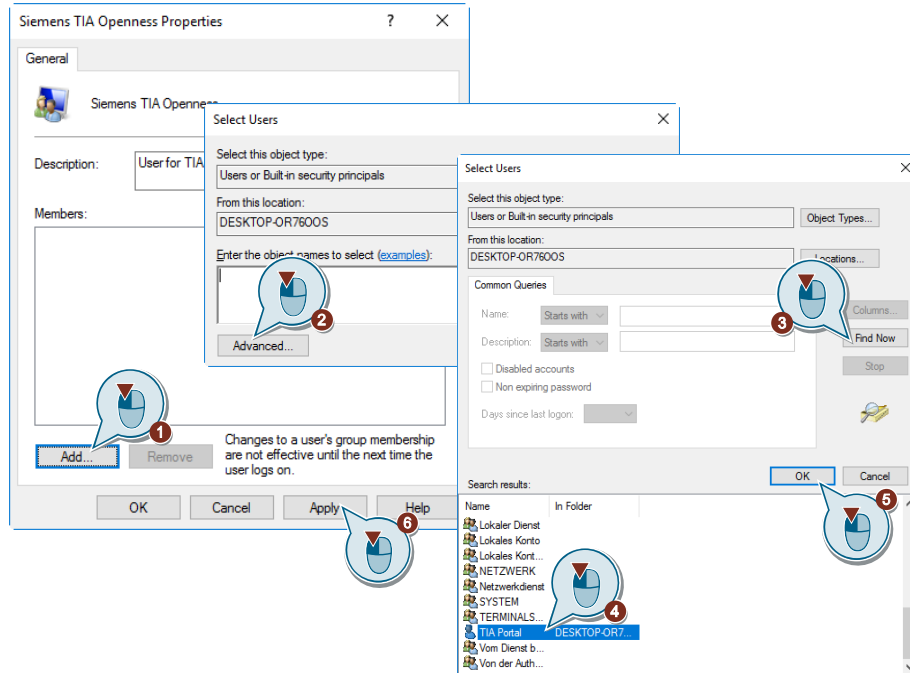


2. Under the category “Local Users and Groups”, open the folder “Groups” (1) and then open the “Siemens TIA Openness” group by double-clicking it (2).



3. Adding users:

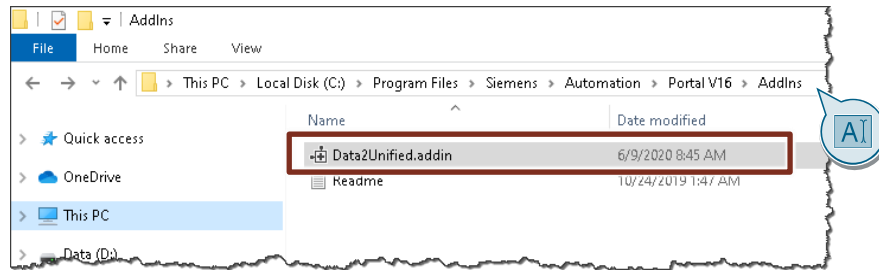
- Click “Add” (1) in the Properties View of the group.
- In the “Select Users” window, click “Advanced” (2).
- Then click “Find Now” (3) in the Advanced View.
- Select the user with which you are logged in on the PC (4).
- Confirm the user selection with “OK” (5).
- Then click on “Apply” (6) in the “Siemens TIA Openness” Properties View.



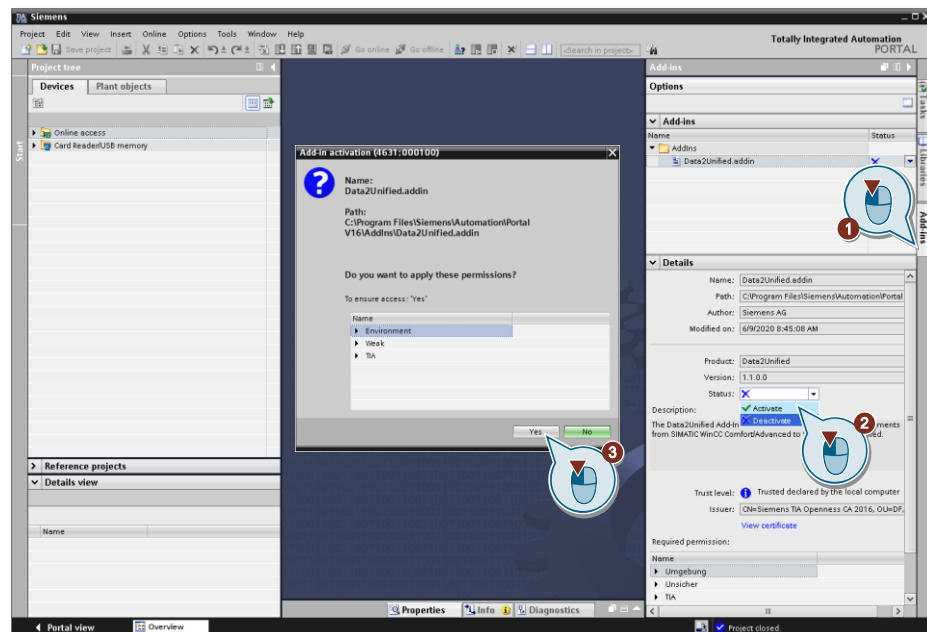
4. Restart your PC for the change to take effect.

3.2 Enabling the Add-In

1. Download the “Data2Unified” add-in from this article and unzip it.
2. Open the file explorer, then open the TIA installation directory (default “C:\Program Files\Siemens\Automation\Portal V16\AddIns”) and copy the “Data2Unified.addin” file into it.



3. Open the TIA Portal V16.
4. Activate the add-in in the TIA Portal:
 - In the TIA Portal, open the “Add-Ins” tab (1).
 - In the details, open the Status drop-down list and select “Activate” (2).
 - Confirm the window for activating the add-in by clicking “Yes” (3).

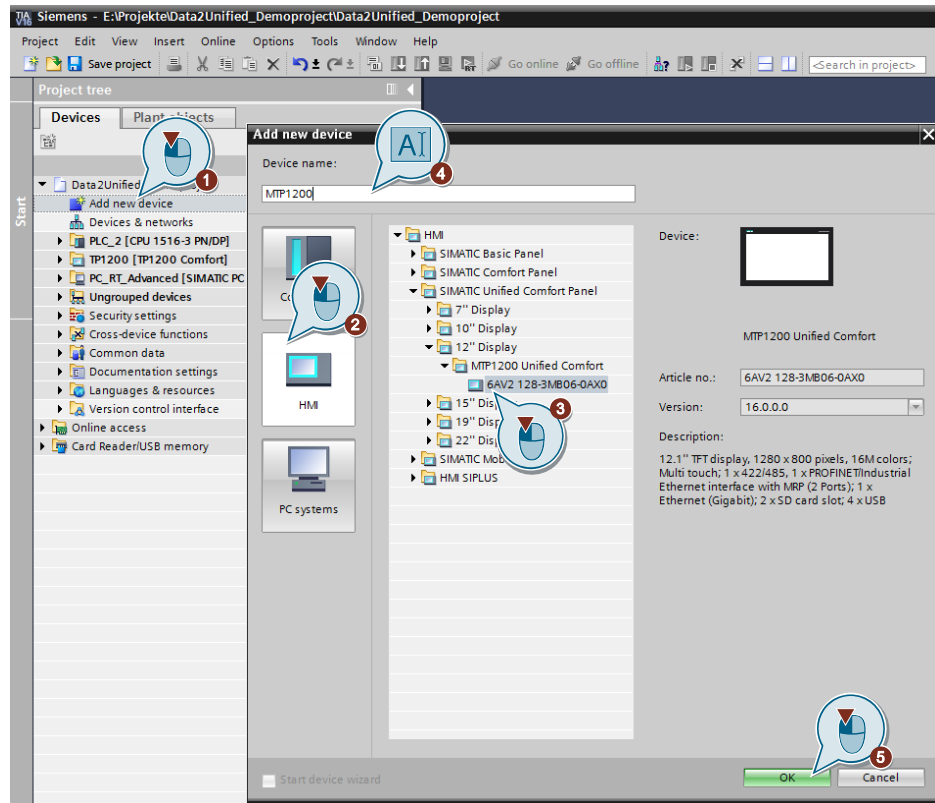


5. The add-in can now be used in the TIA Portal.

3.3 Operation

Opening the “Data2Unified” add-in user interface

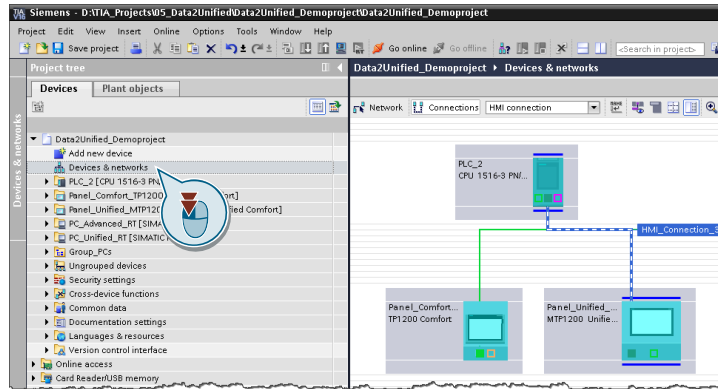
1. Open your TIA Portal project with an existing configuration for the supported devices (e.g. SIMATIC HMI Comfort Panel).
2. Use “Add new device” to add a SIMATIC HMI Unified Comfort Panel in the appropriate size.



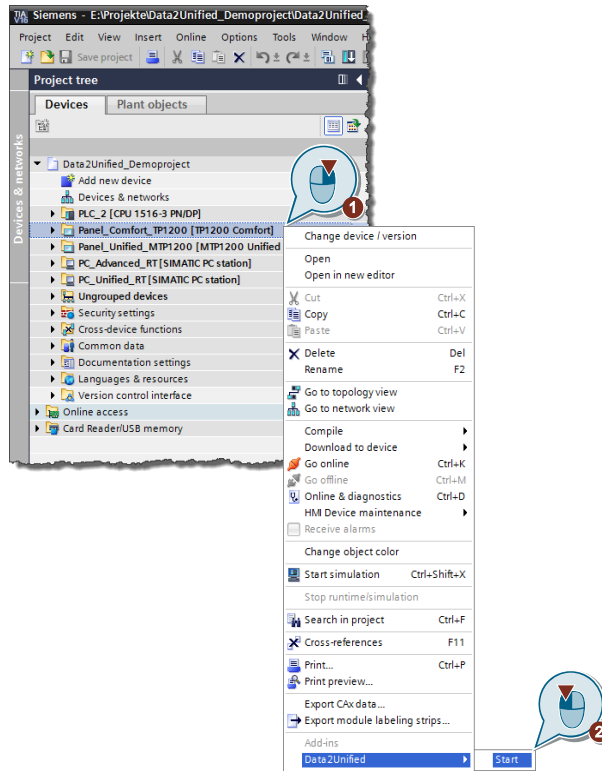
Note If you are using a PC station with WinCC Runtime Advanced, add a PC station with WinCC Unified Runtime as the target device.



- If you have configured tags with controller connection, open the “Devices & networks” editor in the next step and add an HMI connection.



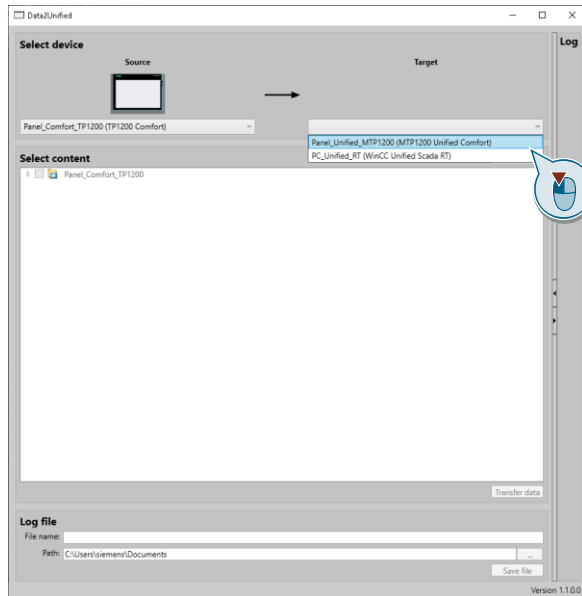
- Right-click on the Comfort Panel in the project navigation and select “Data2Unified > Start” in the context menu.



The user interface of the add-in opens. The Comfort Panel set as the source device by default and the project contents are then retrieved.

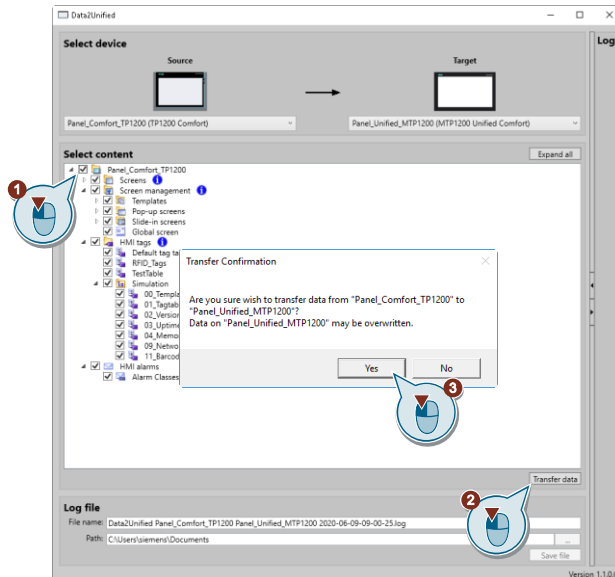
Note If you start the add-in via the context menu of the Unified Comfort Panel, the target device is preset and you can select the source device.

- In the next step, select the Unified Comfort Panel as the target device in the user interface for the “Data2Unified” add-in by clicking the drop down menu under select target device.

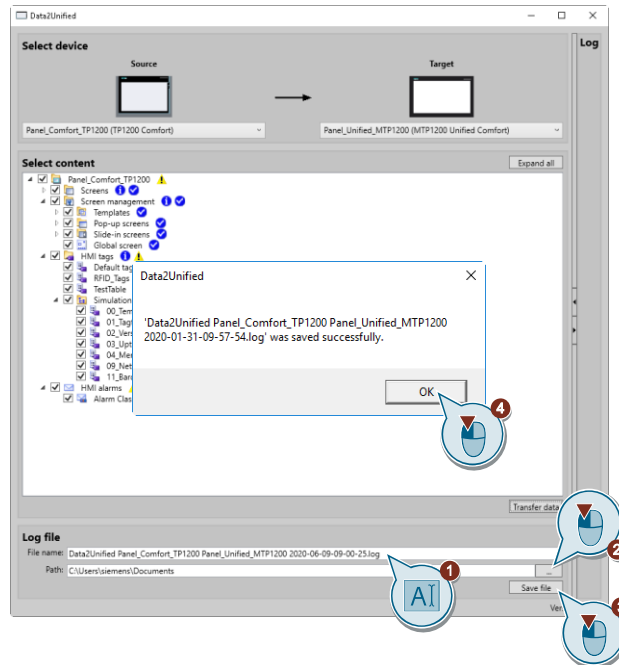


Note If you have selected a PC station with Runtime Advanced as the source device, you must select a PC station with WinCC Unified Runtime as the target device.

- Select project contents:
 - In the “Select content” field, select the content that you want to transmit to the target device (Unified Comfort Panel) (1).
 - Then click on “Transfer Data” (2).
 - Confirm by clicking “Yes” (3) in the dialog box.



7. Then save the “Log file” to get an exact overview of the conversion. To do so, proceed as follows:
 - Enter a unique name (1) if necessary.
 - Then select the storage location (2).
 - Then click “Save” (3).
 - Click on “OK” (4) to close the information box.



Note

If you have configured tags with controller connection, please refer to Chapter [3.5.3](#).

8. The conversion of the project contents has been completed and you can close the user interface of the “Data2Unified” add-in.

3.4 Analyzing Log Files

The log file is the event log of the “Data2Unified” add-in. It records, in detail, which of the TIA Portal project elements and their respective properties have been converted to Unified.

The file itself can be saved in “*.log” format and then opened in Microsoft Excel or Notepad, among other options.

Note To evaluate the log file effectively, Microsoft Excel is recommended for subsequent analysis (see Chapter [3.4.2](#)). You can also filter the data this way.

3.4.1 Components of the Log File

The log file of the “Data2Unified” add-in contains the following five pieces of information:

- “Date/Time”
- “Type”
- “Category”
- “Path”
- “Message”

Date/Time

“Date/Time” specifies the timestamp when the TIA Portal object was converted to WinCC Unified.

Type

“Type” describes the status of the conversion. A distinction is made between the following types:

Table 3-1

Type	Description
Success	The object/property was successfully converted.
Error	The object/property could not be converted.
Skipped	The object/property was omitted during conversion.
Not supported	The property is not supported and was not converted.
Information	Shows the start and end of a conversion sequence, not relevant for the conversion

Category

“Category” specifies which kind of TIA Portal project element it is, for example, “Tag”, “Tag table”, “Alarm class”.

Path

“Path” specifies where to find the TIA Portal project element in the TIA Portal Project navigation.

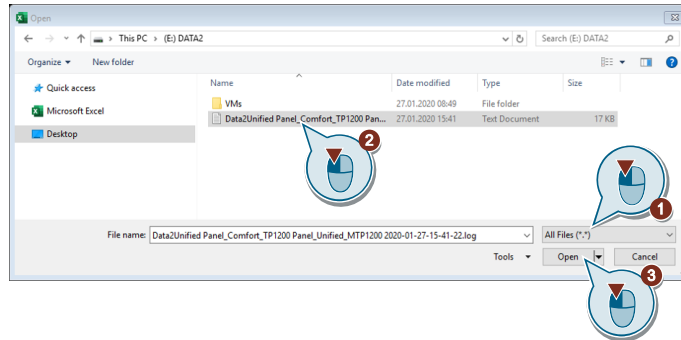
Message

“Message” contains a detailed description of the TIA Portal project element and its properties based on its “Type”.

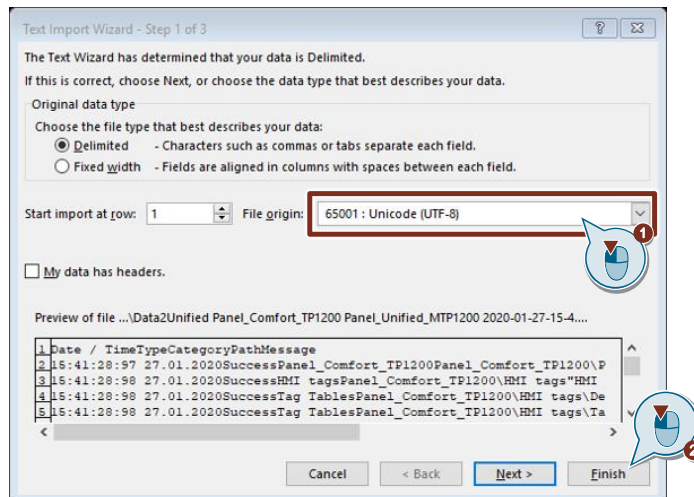
3.4.2 Opening Log File with Microsoft Excel

To open the “log file” with Microsoft Excel, proceed as follows.

1. Open Microsoft Excel.
2. Then click “File > Open” and browse to the location where the log file is stored.
3. To open the log file, select “All Files (*.*)” (1). Then select the “Log file” (2) and click “Open” (3).



4. In the “Text Import Wizard” that opens, select the entry “65001: Unicode (UTF-8)” (1) as the “File origin” and then click “Finish” (2).



5. You can then filter the individual columns in Microsoft Excel.

Date / Time	Type	Category	Path	Message
15:41:28:97 27.01.2020	Success	Panel_Comfort_TP1200	Panel_Comfort_TP1200\Panel_Comfort_TP1200	Panel_Comfort_TP1200: Skipped
15:41:28:98 27.01.2020	Success	HMI tags	Panel_Comfort_TP1200\HMI tags	HMI tags: Skipped
15:41:28:98 27.01.2020	Success	Tag Tables	Panel_Comfort_TP1200\HMI tags\Default tag table	Default tag table: Skipped
15:41:28:98 27.01.2020	Success	Tag Tables	Panel_Comfort_TP1200\HMI tags\Tag table_1	Tag table_1: Skipped
15:41:28:98 27.01.2020	Success	Tag Tables	Panel_Comfort_TP1200\HMI tags\TestTable	TestTable: Skipped
15:41:28:98 27.01.2020	Success	Simulation	Panel_Comfort_TP1200\HMI tags\Simulation	Simulation: Skipped
15:41:28:98 27.01.2020	Success	Tag Tables	Panel_Comfort_TP1200\HMI tags\Simulation\00 Temolatte	00 Temolatte: Skipped

3.5 Error Handling

3.5.1 Add-In is Missing in the TIA Portal Context Menu

Malfunction

The “Data2Unified” add-in entry is missing from the context menu of the source device, although the add-in is displayed as enabled in the TIA Portal. This occurs usually after a restart of the TIA Portal.

Remedy

In this case, check whether:

- the registered user is a member of the “Siemens TIA Openness” group
- the “Data2Unified” add-in is enabled

If both of these conditions are met and the “Data2Unified” add-in still does not appear, disable the add-in via the “Add-Ins” tab and then enable it again.

3.5.2 Device Cannot be Selected Under “Select Device”

Malfunction

The user interface of the “Data2Unified” add-in is opened. However, you cannot select the source device (“Source”) or the target device (“Target”) under “Select device”.

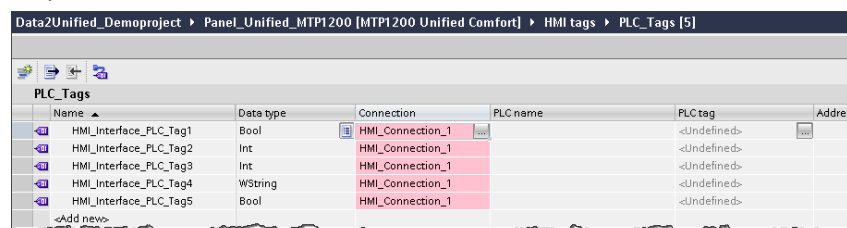
Remedy

In this case, check if the device is supported by the “Data2Unified” add-in (see Chapter [2.2](#))

3.5.3 Connection or PLC Tag is Displayed with a Red Background

Malfunction

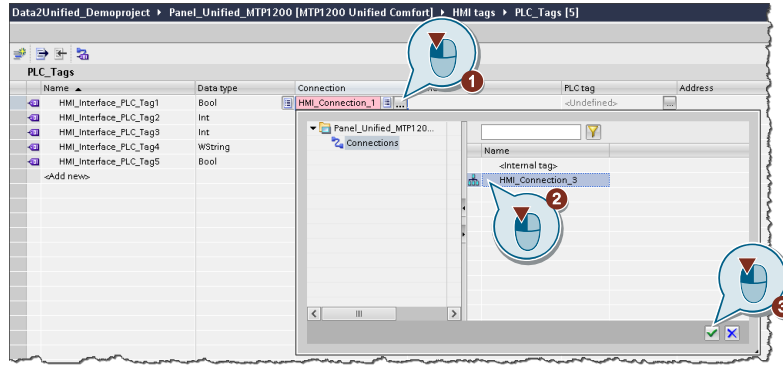
If you have configured tags with controller connection in your project and have executed the add-in, but the HMI connection is displayed incorrectly in the first step.



Name	Data type	Connection	PLC name	PLC tag	Address
HMI_Interface_PLCTag1	Bool	HMI_Connection_1		<Undefined>	
HMI_Interface_PLCTag2	Int	HMI_Connection_1		<Undefined>	
HMI_Interface_PLCTag3	Int	HMI_Connection_1		<Undefined>	
HMI_Interface_PLCTag4	WString	HMI_Connection_1		<Undefined>	
HMI_Interface_PLCTag5	Bool	HMI_Connection_1		<Undefined>	

Remedy

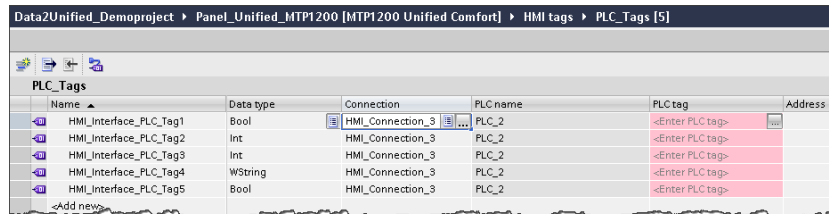
In this step, open the extended view in the “Connection” column and select the name of the HMI connection between the PLC and its Unified Comfort Panel—in this case, “HMI_Connection_3”.



You can then transfer the property to all tags with controller connection (copy and paste).

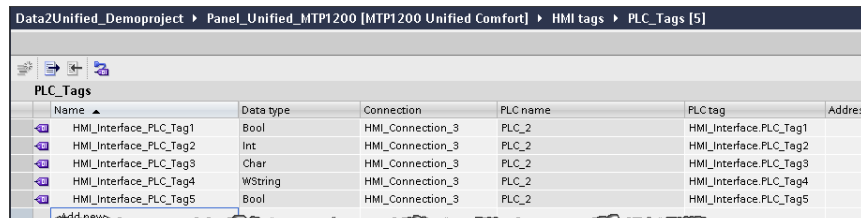
Resulting failure

After the successful correction of the connection, the “PLC tag” column is highlighted in red, as these still need to be stored.



Remedy

After correcting the connection name, open the add-in again and run the conversion of the tag table/tag again. The PLC tags are then set automatically.



4 Appendix

4.1 Service and support

Industry Online Support

Do you have any questions or need assistance?

Siemens Industry Online Support offers round the clock access to our entire service and support know-how and portfolio.

The Industry Online Support is the central address for information about our products, solutions and services.

Product information, manuals, downloads, FAQs, application examples and videos – all information is accessible with just a few mouse clicks:

<https://support.industry.siemens.com>

Technical Support

The Technical Support of Siemens Industry provides you fast and competent support regarding all technical queries with numerous tailor-made offers – ranging from basic support to individual support contracts. Please send queries to Technical Support via Web form:

www.siemens.com/industry/supportrequest

SITRAIN – Training for Industry

We support you with our globally available training courses for industry with practical experience, innovative learning methods and a concept that's tailored to the customer's specific needs.

For more information on our offered trainings and courses, as well as their locations and dates, refer to our web page:

www.siemens.com/sitrain

Service offer

Our range of services includes the following:

- Plant data services
- Spare parts services
- Repair services
- On-site and maintenance services
- Retrofitting and modernization services
- Service programs and contracts

You can find detailed information on our range of services in the service catalog web page:

support.industry.siemens.com/cs/sc

Industry Online Support app

You will receive optimum support wherever you are with the "Siemens Industry Online Support" app. The app is available for Apple iOS and Android.

support.industry.siemens.com/cs/ww/en/sc/2067

4.2 Links and literature

Table 4-1

No.	Subject
\1\	Siemens Industry Online Support https://support.industry.siemens.com
\2\	Link to the article page of the application example https://support.industry.siemens.com/cs/ww/en/view/109770510

4.3 Change documentation

Table 4-2

Version	Date	Change
V1.0	02/2020	First edition
V1.1	07/2020	<ul style="list-style-type: none"> • Adjust description to Data2Unified V1.1.0.0 • support of further TIA projects elements • small bug fixes based on feedbacks