

# SIEMENS

## Rainproof Combination Metering

Catalog Number

**MC2040B1200ESC (Surface)**  
**MC2040B1200EFC (Flush)**

Enclosure

**Type 3R**

Panelboard Rating: 200 Amps Max; Bus Rating: 200 Amps Max.  
 120/240 Volts ~, 1 phase, 3 wire  
 208Y/120 Volts ~, 1 phase, 3 wire  
 (Derived from 3 phase – 4 wire system With 5th Jaw Assembly installed)

Meter Socket Rating: 200 Amps Continuous

For installation by Qualified Person in accordance with all local electrical codes and/or the National Electrical Code.®

### Suitable Only For Use As Service Equipment

### For Overhead or Underground Service

Line terminals A1 and B1 are installed for underground service entry as shown in the wiring diagram. For overhead entry, reposition service bus per enclosed instruction sheet.

Unused neutral branch terminals may be used to terminate equipment grounding wires in the combinations indicated for equipment ground bar terminals.

#### General Information:

Circuit breaker trip position is indicated by handle position midway between ON and OFF. To reset, move handle to OFF position then turn ON.

Any 80-100 Amp max. circuit breaker must be installed in the lowest position in the branch panel. All other positions are limited to 70 Amp max. circuit breakers.

### Use 60/75° C Copper or Aluminum Wires

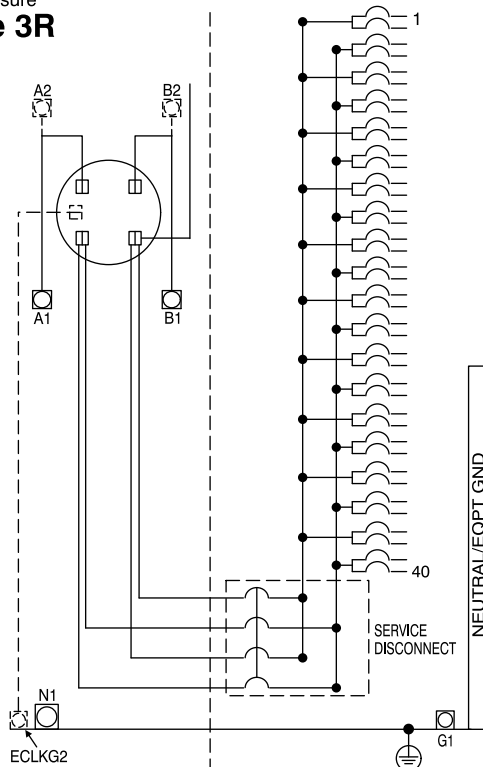
Terminal	Wire Size	Torque
A1, B1, A2, B2	250kcmil - #4	250 lb-in
N1	250kcmil - #4	250 lb-in
G1	2/0 - #14	50 lb-in
Branch Breaker Terminals	See Markings on Breaker	
Neutral/ Equipment Ground	#10 - #14 CU	20 lb-in
	#10 - #12 AL	20 lb-in
	#8	25 lb-in
	#6 - #4	35 lb-in
Ground Conductors Only	(2) or (3) #14 AWG	20 lb-in
	(2) #12-#10 AWG	20 lb-in

If hub is required, use the catalog numbers listed below :

Trade size (in)	Catalog number
<i>RX Type Hub (top endwall, surface units only)</i>	
1 1/4"	EC38597
1 1/2"	EC38598
2"	EC38599
2 1/2"	EC38600
<i>HC Type Hub (bottom endwall)</i>	
2"	ECHC200
2 1/2"	ECHC250
3"	ECHC300

Accessories	Cat. No.
Filler Plate	ECQF3
5th Jaw Assembly	EMC5J
Meter Socket Jumper	ECJS

Lug Kit	Wire Range	Torque
ECLKG2	2/0 - #14	50 lb in



Short Circuit Current Rating (Watt-hour Meter not included in short circuit rating)

This panelboard has a maximum short circuit current rating of 22,000 Amps RMS symmetrical, 120/240 V~. The correct branch circuit breakers and main/branch breaker series combinations to be used for various short circuit current levels are listed in the tabulation below. Any circuit breaker installed, replaced, or added in this panelboard must be manufactured by Siemens and must be of the correct type as indicated in the tabulations below. Use of other circuit breakers in this equipment will void the warranty.

Main Breaker	Branch Breaker	Then the maximum short circuit rating in RMS symmetrical amperes, 120/240V~is:
When the panelboard service disconnect is a Type:	And the branch breakers installed are Type:	
EQ9985	QP, QPH, QT, QPF, QPHF, QAF, QAFH, QE, QEH, MP-T, MP-HT, MH-T, MP-GT, MP-HGT, MP-AT, MP-HAT, MP-ET and MP-HET	22,000

**Important:** Do not allow petroleum based (hydrocarbon) sprays, chemicals, solvents or any paint to contact interior components. Petroleum based chemicals can cause degradation of electrical insulating materials.