

The Siemens logo is displayed in a teal, sans-serif font within a white rectangular box in the top left corner of the page. The background of the entire page is a photograph of a man in a light blue shirt using a tablet in a factory setting.

SIEMENS

Application Example • 02/2015

# SIMATIC HMI Label Creator

Operating Manual

<http://support.automation.siemens.com/WW/view/en/61507590>

## Warranty and Liability

### Note

The Application Examples are not binding and do not claim to be complete with regard to configuration, equipment or any contingencies. The Application Examples do not represent customer-specific solutions. They are only intended to provide support for typical applications. You are responsible for the correct operation of the described products. These Application Examples do not relieve you of the responsibility of safely and professionally using, installing, operating and servicing equipment. When using these Application Examples, you recognize that we cannot be made liable for any damage/claims beyond the liability clause described. We reserve the right to make changes to these Application Examples at any time and without prior notice. If there are any deviations between the recommendations provided in this Application Example and other Siemens publications – e.g. catalogs – the contents of the other documents have priority.

We do not accept any liability for the information contained in this document.

Any claims against us – based on whatever legal reason – resulting from the use of the examples, information, programs, engineering and performance data etc., described in this Application Example will be excluded. Such an exclusion will not apply in the case of mandatory liability, e.g. under the German Product Liability Act ("Produkthaftungsgesetz"), in case of intent, gross negligence, or injury of life, body or health, guarantee for the quality of a product, fraudulent concealment of a deficiency or breach of a condition which goes to the root of the contract ("wesentliche Vertragspflichten"). The compensation for damages due to a breach of a fundamental contractual obligation is, however, limited to the foreseeable damage, typical for the type of contract, except in the event of intent or gross negligence or injury to life, body or health. The above provisions do not imply a change in the burden of proof to your disadvantage.

Any form of duplication or distribution of these Application Examples or excerpts hereof is prohibited without the expressed consent of Siemens Industry Sector.

### Security information

Siemens provides products and solutions with industrial security functions that support the secure operation of plants, solutions, machines, equipment and/or networks. They are important components in a holistic industrial security concept. With this in mind, Siemens' products and solutions undergo continuous development. Siemens recommends strongly that you regularly check for product updates.

For the secure operation of Siemens products and solutions, it is necessary to take suitable preventive action (e.g. cell protection concept) and integrate each component into a holistic, state-of-the-art industrial security concept. Third-party products that may be in use should also be considered. For more information about Industrial Security, visit <http://www.siemens.com/industrialsecurity>.

To stay informed about product updates as they occur, sign up for a product-specific newsletter. For more information, visit <http://support.automation.siemens.com>.

# Table of Contents

<b>Warranty and Liability .....</b>	<b>2</b>
<b>1 Commissioning the Application.....</b>	<b>4</b>
1.1 Preparation .....	4
1.2 Startup .....	4
<b>2 Operation of the Application .....</b>	<b>5</b>
2.1 Overview.....	5
2.2 Creating a new project .....	6
2.3 Opening an existing project.....	6
2.3.1 Opening a project from the "Recent Projects" list .....	6
2.3.2 Finding and opening a project on the hard drive.....	6
2.4 Deleting an existing project .....	7
2.4.1 Removing projects from the "Recent projects" list .....	7
2.4.2 Deleting a project from the hard drive .....	7
2.5 Creating a device in the project.....	7
2.6 Deleting a device in the project .....	8
2.7 Configuring a device.....	9
2.7.1 Opening the editor .....	9
2.7.2 Configuring keys.....	9
2.7.3 Deleting configured keys .....	10
2.8 Adding graphics to the library.....	11
2.9 Exporting label strips .....	11
2.10 Printing label strips .....	12
<b>3 Notes .....</b>	<b>13</b>
3.1 Information for printing label strips .....	13
3.2 Paper size .....	13
3.3 Devices in Portrait mode .....	13
<b>4 Related Literature .....</b>	<b>13</b>
<b>5 History.....</b>	<b>13</b>

# 1 Commissioning the Application

## 1.1 Preparation

Table 1-1

No.	Action	Remarks
1.	Download the file "SIMATIC_HMI_Label_Creator.zip".	
2.	Unzip the file with a respective program.	

## 1.2 Startup

Table 1-2

No.	Action	Remarks
1.	Open the previously unzipped folder and start the file "SIMATIC HMI Label Creator.exe".	You can start the program without installation.

**Note**

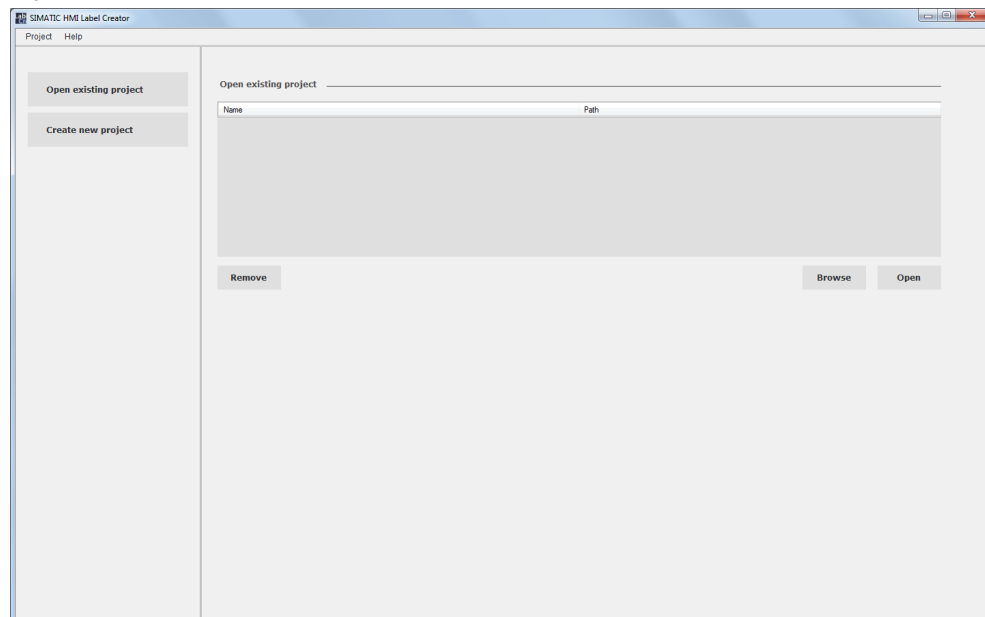
.NET-Framework version 3.5 or higher must be installed on the computer to be able to start the program.  
(Included in installation of TIA Portal)

## 2 Operation of the Application

### 2.1 Overview

#### Start screen

Figure 2-1

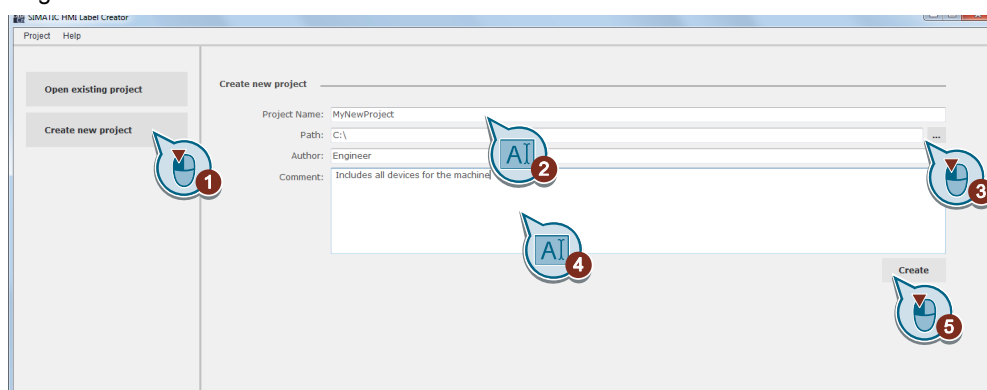


## 2.2 Creating a new project

### Procedure

1. Click on the "Create new project" button.
2. Enter the project name in the "Project Name" field.
3. Enter a project path in the "Path" field or select it via the selection dialog.
4. Optional: Enter an author in the "Author" field and a comment in the "Comment" field.
5. Click the "Create" button to create the project.

Figure 2-2



## 2.3 Opening an existing project

### 2.3.1 Opening a project from the "Recent Projects" list

#### Procedure

1. Click the "Open existing project" button.
2. Select a project from the list.
3. Open the project by double-clicking the selected list entry.

### 2.3.2 Finding and opening a project on the hard drive

#### Procedure

1. Click the "Open existing project" button.
2. Click the "Browse" button.
3. In the selection dialog, navigate to the project folder on the hard drive and select the file called "ProjectName.xml".
4. Confirm the selection dialog by opening the file.
5. The project opens.

## 2.4 Deleting an existing project

### 2.4.1 Removing projects from the "Recent projects" list

#### Procedure

1. Click the "Open existing project" button.
2. Select a project from the list.
3. Click the "Remove" button to remove the project from the list.

### 2.4.2 Deleting a project from the hard drive

#### Procedure

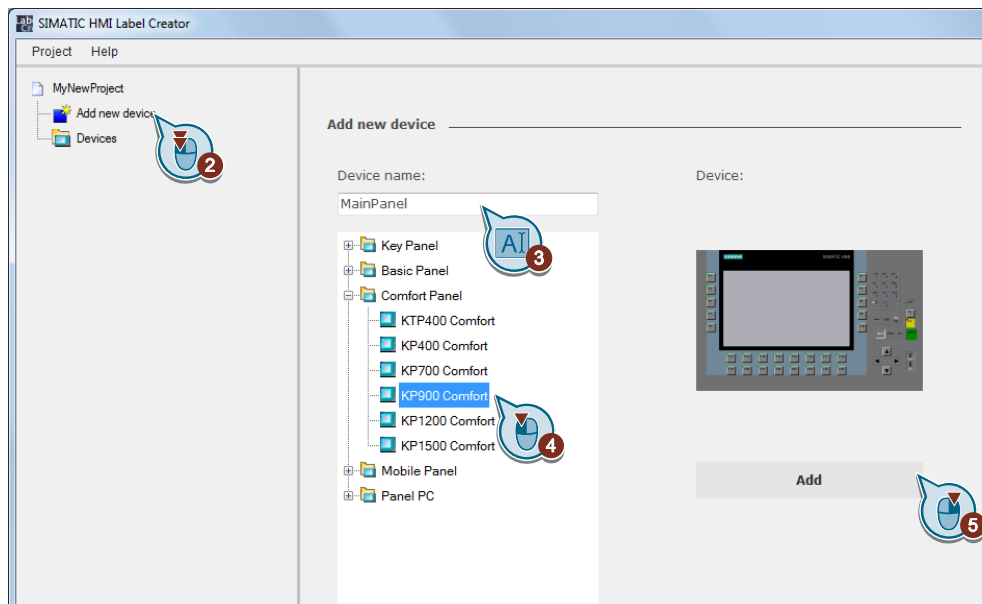
1. Open the file destination of the project folder with Windows Explorer.
2. Delete the complete project folder from the hard drive.

## 2.5 Creating a device in the project

#### Procedure

1. Open a project as described in Chap. [2.3 "Opening an existing project"](#) or create a new project as described in Chap. [2.2 Creating a new project](#).
2. Double-click "Add new device" in the project tree.
3. Enter a name for the new operating device.
4. Select the device type from the product tree.
5. Click "Add" to add the operating device.

Figure 2-3

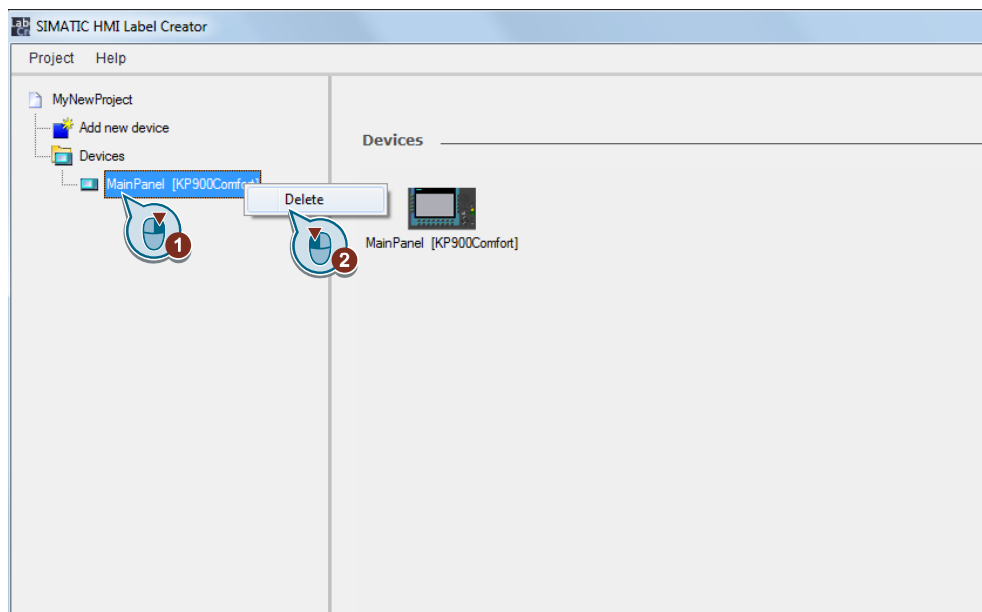


## 2.6 Deleting a device in the project

### Procedure

1. Open a project as described in Chap. [2.3 Opening an existing project](#).
2. Select the device in the project tree that you want to delete.
3. Open the context menu and click "Delete".
4. Confirm the subsequent dialog with "Yes", if you really want to delete the device. Click "No" to abort the procedure.

Figure 2-4





## 2.7 Configuring a device

### 2.7.1 Opening the editor

#### Procedure

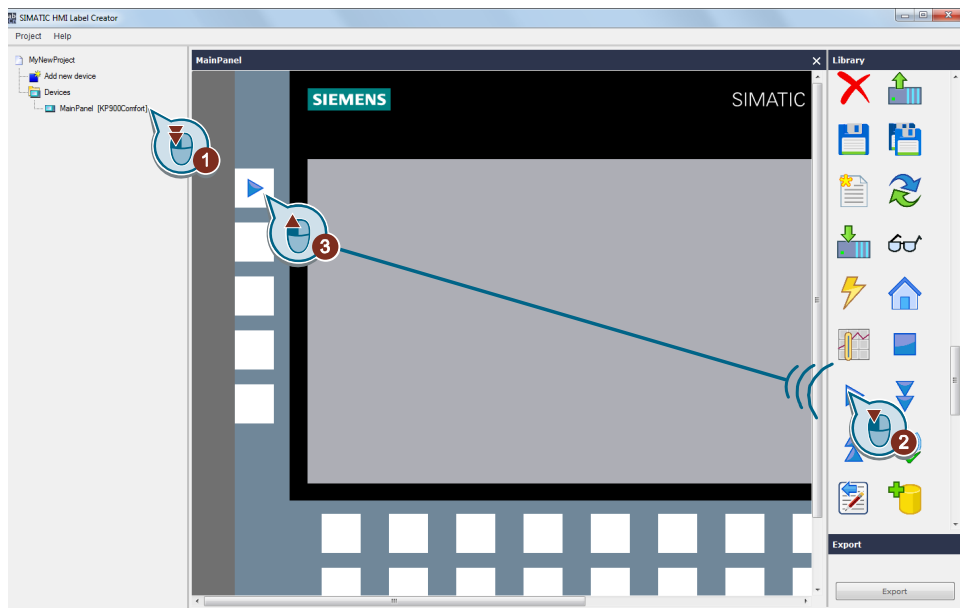
1. Open a project as described in Chap. [2.3 Opening an existing project](#).
2. Open the device configuration editor by double-clicking the device in the project tree.

### 2.7.2 Configuring keys

#### Procedure

1. Select a graphic from the "Library" area by clicking and holding the left mouse button.
2. Drag and drop the graphic to the function key of the operating device for which you want to use the graphic.
3. Release the mouse button.

Figure 2-5

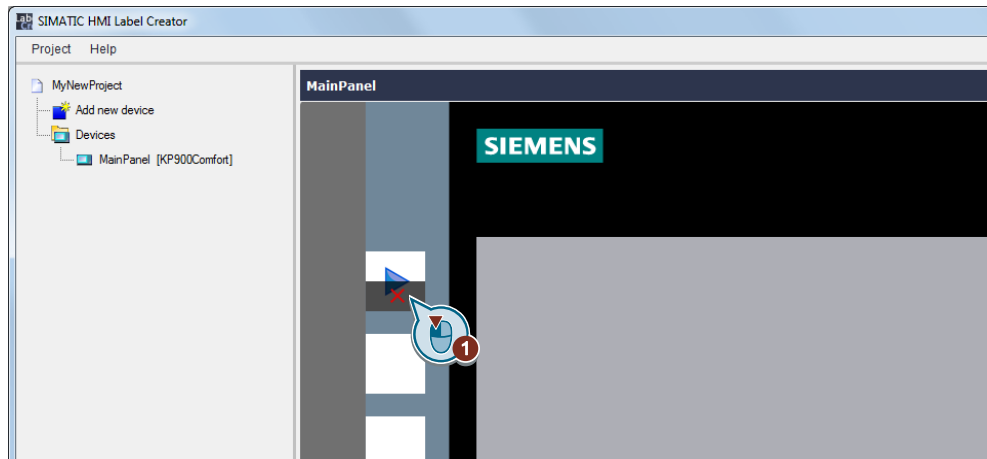


### 2.7.3 Deleting configured keys

#### Procedure

1. Move the mouse over the key the graphic of which you want to delete. A button with a red "X" appears.
2. Click this button to remove the configured graphic.

Figure 2-6

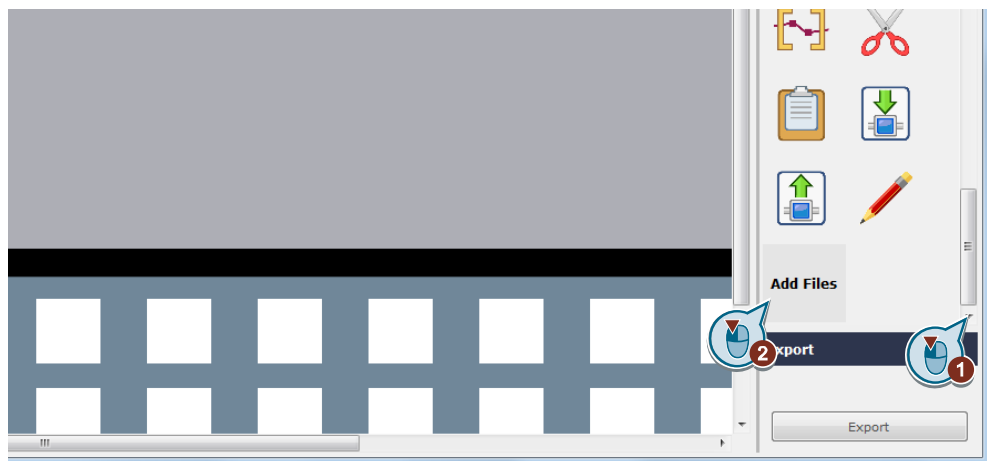


## 2.8 Adding graphics to the library

### Procedure

1. Scroll to the end of the selection list of the "Library" area.
2. Click the "Add files" button.
3. In the subsequent dialog, select the files that you want to add to the library and confirm the dialog.

Figure 2-7

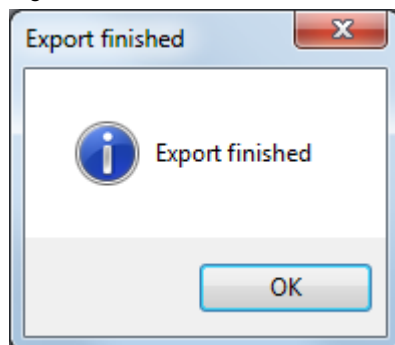


## 2.9 Exporting label strips

### Procedure

1. Click "Export" to export the label strips.
2. Select a directory in the following dialog to store the file and confirm the dialog by clicking "OK".
3. Once the export is finished, a dialog box with the message "Export finished" is displayed.

Figure 2-8

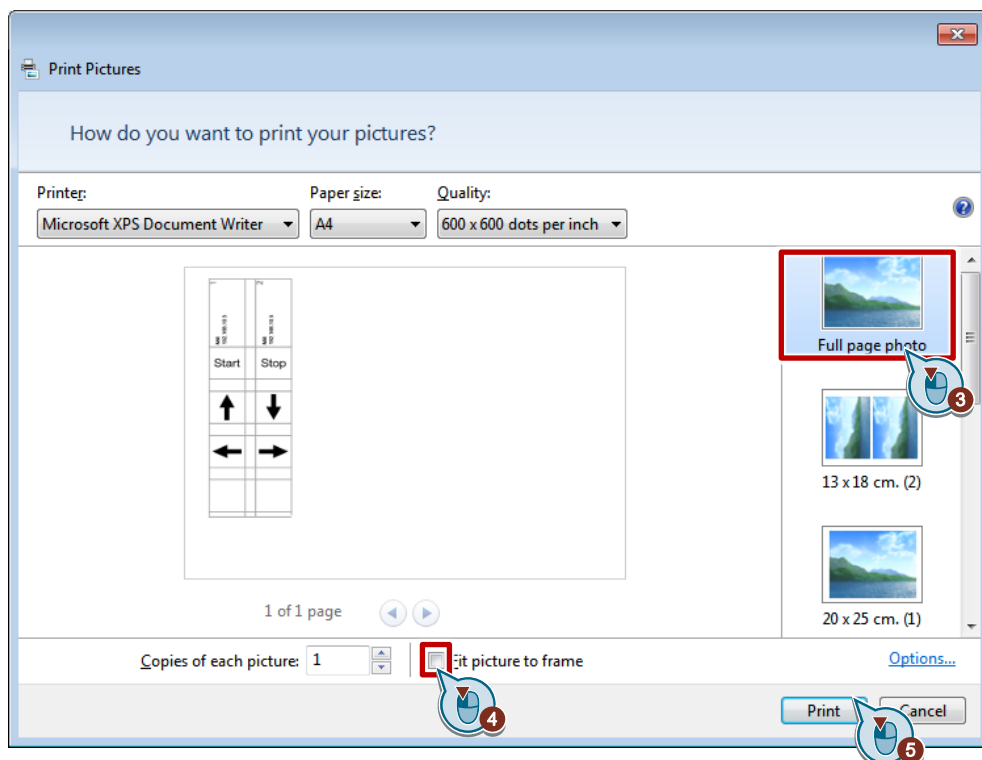


## 2.10 Printing label strips

### Procedure

1. Open the file stored in Chap. 2.9 Exporting label strips with the "Window Photo Viewer".
2. Click the "Print" button.
3. Select "Full page photo".
4. Deactivate the option "Fit picture to frame"
5. Start printing by clicking "Print".

Figure 2-9



## 3 Notes

### 3.1 Information for printing label strips

#### Printing materials

Table 3-1

No.	Note
1.	Please use transparent foil or paper with a minimum thickness of 0.13 mm and a maximum thickness of 0.16 mm for creating the label strips.
2.	If required, punch holes for LEDs from paper strips after printing so that the LEDs in the function keys remain visible.
3.	Protect the marking against abrasion with transparent adhesive tape (observe max. thickness) or specific fixating spray (available in specialized IT stores).
4.	The label strips should not be too loose, since they could leave their correct position due to vibrations. Sometimes it is required to secure the label strip to the device with adhesive tape.
5.	The strips can be inserted more easily with the corners beveled or chamfered.

### 3.2 Paper size

If you want to use a different paper size (e.g. "Letter" 8.5x11 inch), select A4 in your print settings, nevertheless.

### 3.3 Devices in Portrait mode

The SIMATIC Label Creator is for the use in landscape generally.

If you want to use your device in portrait, you can still use the SIMATIC Label Creator. Just rotate your graphics (90°) before using with the SIMATIC Label Creator.

## 4 Related Literature

Table 4-1

	Topic	Title
\1\	Siemens Industry Online Support	<a href="http://support.automation.siemens.com">http://support.automation.siemens.com</a>
\2\	Download page of this entry	<a href="http://support.automation.siemens.com/WW/view/en/61507590">http://support.automation.siemens.com/WW/view/en/61507590</a>

## 5 History

Table 5-1

Version	Date	Modification
V1.0	07/2012	First version
V2.0	02/2015	New user interface; new devices can be configured