

**SIEMENS**



FAQ • 03/2014

# How do you configure the horn in SIMATIC PCS 7 V8.0 and WinCC V7.2?

<http://support.automation.siemens.com/WW/view/en/89279751>

---

This entry originates from the Siemens Industry Online Support. The conditions of use specified there apply ([www.siemens.com/nutzungsbedingungen](http://www.siemens.com/nutzungsbedingungen)).

## Security Notes

Siemens offers products and solutions with industrial security functions which support the secure operation of plants, solutions, machines, devices and/or networks. They are important components in a comprehensive industrial security concept. The Siemens products and solutions continue to be developed under this aspect. Siemens recommends that you keep yourself regularly informed about product updates.

For the safe operation of Siemens products and solutions it is necessary to take appropriate security measures (cell protection concept, for example) and to integrate each component in an overall industrial security concept which is state of the art. This should also cover the third-party products used. Additional information about industrial security is available at:

<http://www.siemens.com/industrialsecurity>.

In order to keep yourself informed about product updates, we recommend subscribing to our product-specific newsletter. Additional information about this is available at: <http://support.automation.siemens.com>.

## Contents

1	Horn Configuration in SIMATIC PCS 7 .....	3
2	Configuring and Selecting the Message Classes .....	4
3	Selecting the Message Priority .....	6
4	Defining Trigger Authorization of the Signal Tags .....	8
5	Defining the Trigger of the Horn .....	9
6	Assigning Signal Transmitters to a Signal Tag .....	10
7	Configuring the Horn Acknowledgment Behavior .....	12

# 1 Horn Configuration in SIMATIC PCS 7

## Introduction

You use the horn to trigger optical or acoustic signal transmitters. You use the Horn Editor you configure which signals are to trigger which messages on arrival.

## Notes

- The horn can be configured on OS single stations, OS servers and OS clients.
- It can be configured on one or more of these stations.
- It can be configured separately on each of these stations.
- Each of these horns can be acknowledged both only locally and from multiple stations through an acknowledgment group.
- Multiple acknowledgment through an acknowledge tag continues to be possible for the sake of compatibility with earlier versions. A description of this is available in the FAQ response in Entry ID [17778088](#).

## Validity

The following configuration has been made with the SIMATIC PCS 7 V8.0 SP1. This example applies for the versions PCS 7 V8.0 and WinCC V7.2.

## 2 Configuring and Selecting the Message Classes

### Introduction

In the horn you create the signal tags which you link to message properties. In the case of an incoming message the signal tag of the assigned message class is set to "1". If you do not specify a message class, every incoming message enables the signal tag.

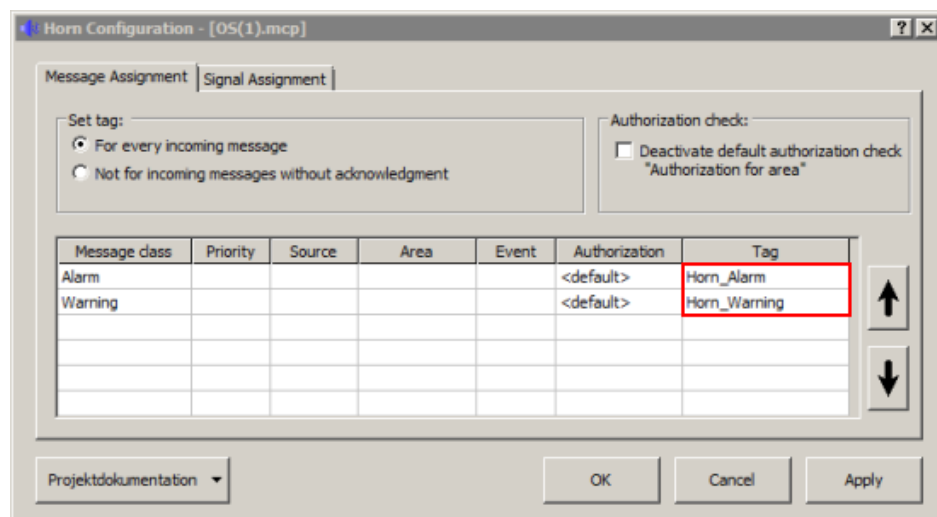
### Prerequisites

Configure all the single-user stations, servers, redundant servers and client OS stations in the SIMATIC Manager in accordance with the configuration manual "[PCS 7 - Engineering System V8.0 SP1](#)".

Open the desired SIMATIC PCS 7 OS station through the WinCC Explorer on the Engineering Station.

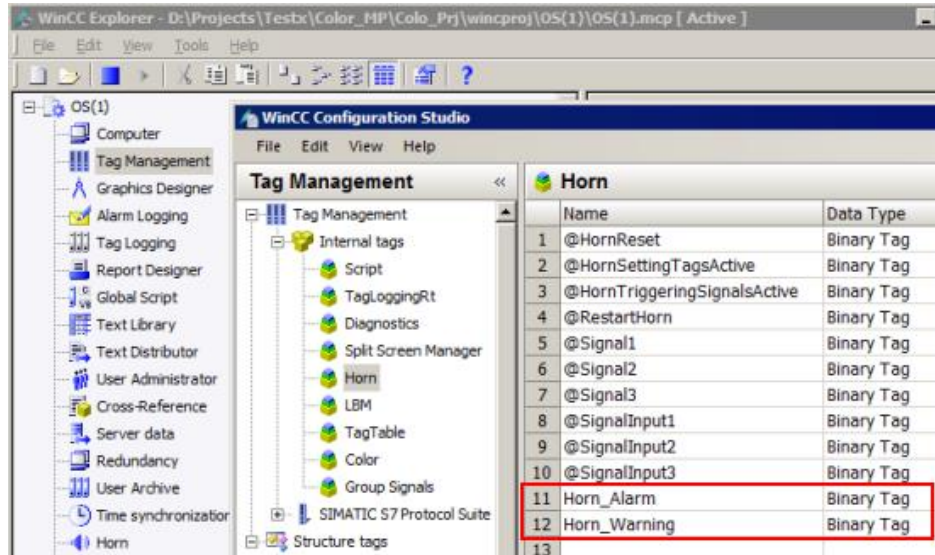
### Procedure

1. Open the Horn Editor by double-clicking the horn icon in the WinCC Explorer.
2. Now go to the event class pull-down menu and select the "Alarm" message class in the "Message Assignment" tab, in the "Message class" column and select "Warning" in the next line.
3. Insert any other message classes that are required.
4. Then, in the "Tag" column, you enter names for the tags of the message classes.



## 2 Configuring and Selecting the Message Classes

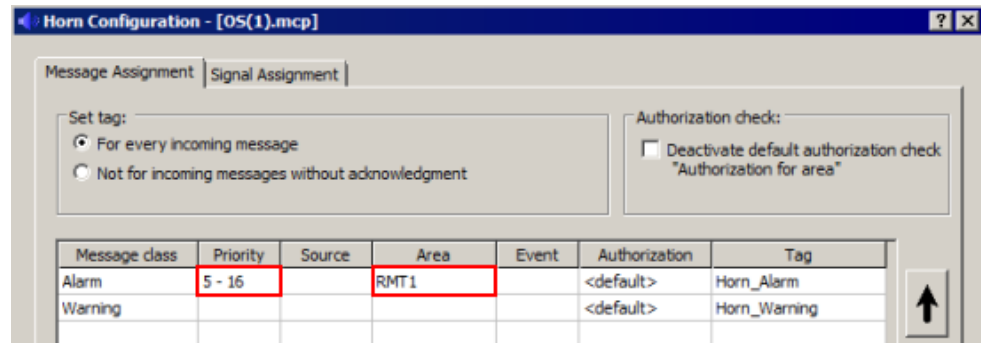
5. Click the "Apply" button to create the specified tags in the Tag Management, in the "Horn" group of the Internal tags with the "Binary Tag" data type. The trigger for the horn is controlled at a later point in the assignment process by means of these tags.



## 3 Selecting the Message Priority

### Introduction

In the "Message Assignment" tab, you can restrict messages to a specific area and/or specific priorities, for example.



With the message priority you specify in addition and independent of the message class which messages are to trigger a signal first. You define the priorities for single messages in the Alarm Logging.

### Procedure

In the "Message Assignment" tab you enter the message priority number in the "Priority" column. You can use the following entries.

Entry in "Priority"	Example	Meaning
No entry		The messages set the signal tags regardless of the priority.
Number	5	One specific priority.
Number, number, number	5, 7, 9	Multiple specific priorities.
Number x - Number n	5 - 9	Priorities between Number x and Number n inclusive.
< Number or > Number	< 5 or > 5	Priorities less than or greater than the number.
<= Number or >= Number	<= 5 or >= 5	Priorities less than or equal or greater than and equal to the number.
0	0	The signal tag is set only for "0" priorities.

### Note

It is not possible to combine entries, "1-5, 10, <50" for example.

### 3 Selecting the Message Priority

---

Do not assign to a signal tag a combination of message priority and message class that is already being used in another signal tag. In this case, an incoming message could not set this signal tag, as the first assignment already fulfills the conditions for the triggering of the signal. A variable must not be described by several conditions.

The following example shows how the system behaves:

Table 3-1: Example 1

Message class	Priority	Source	Area	Event	Authorization	Tag
Alarm					<Default>	AlarmTag
Alarm	10				<Default>	AlarmHighTag

Table 3-2: Example 2

Message class	Priority	Source	Area	Event	Authorization	Tag
Alarm	>5				<Default>	AlarmTag
Alarm	10				<Default>	AlarmHighTag

Incoming messages of message class "Alarm" with priority "10" never activate the signal tag "AlarmHighTag". In both cases the first condition sets the "AlarmTag" signal tag and triggers the associated signal.

## 4 Defining Trigger Authorization of the Signal Tags

### Introduction

In the "Message Assignment" tab you define in the "Authorization" column whether the signal tag is triggered user-specifically. The authorizations of the logged-on user are taken from the configurations of the User Administrator.

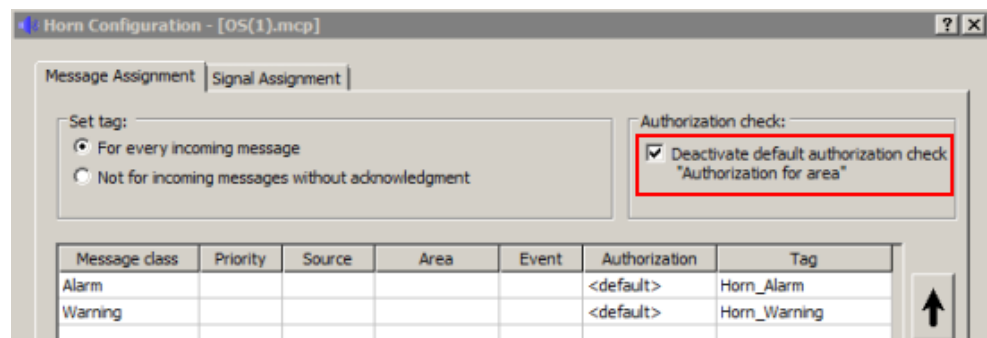
### "<default>" Authorization

If the "<default>" authorization is set for the horn, it is enabled only for plant areas to which the logged-on user is assigned. This corresponds to the authorization "Authorization for area" in the User Administrator.

This setting is useful for OS stations on which an operator is working who only has access to single areas and only has the messages from these areas displayed. In this way the horn is enabled only for messages that that user can also see.

### Authorization check: Disable "Authorization for area"

If the OS station is one of many OS stations in a central control room, the horn should always be enabled regardless of the authorization of the user currently logged on. For this you check the option "Deactivate default authorization check "Authorization for area"".





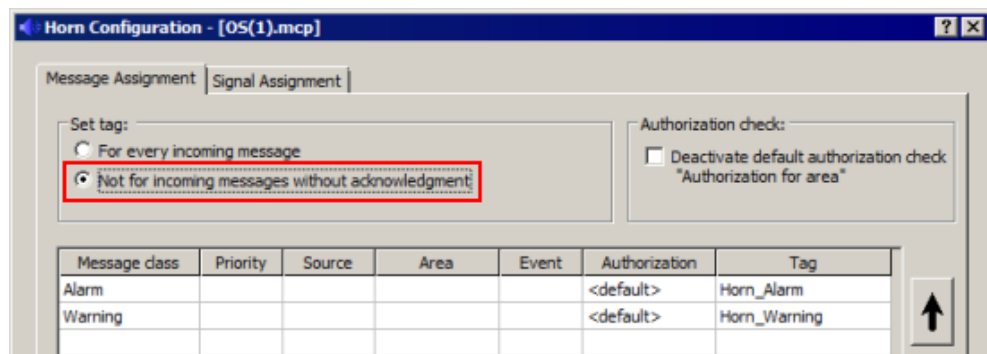
## 5 Defining the Trigger of the Horn

### Introduction

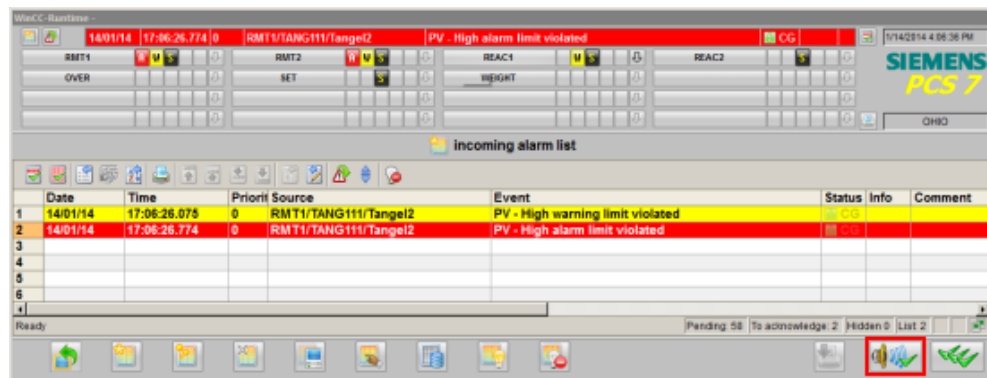
In the case of rapidly repeated messages, the horn is enabled once again for each incoming message. This can be uncomfortable for the operators if messages are repeated frequently.

### Not for incoming messages without acknowledgment

If you select "Not for incoming messages without acknowledgment", the horn is enabled only when an incoming message has been acknowledged beforehand.



In this way the operator has the option of acknowledging only the horn and not the message itself. When a new message arrives, the horn is not enabled again.



## 6 Assigning Signal Transmitters to a Signal Tag

### Introduction

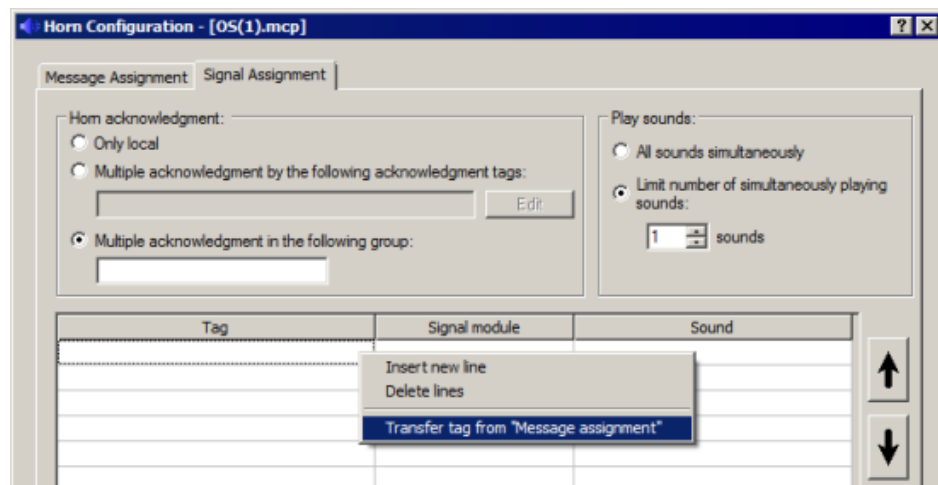
The signals can be output either through an installed signal module, in a PCI slot, for example, or using the sound files (\*.wav) which can be output through the installed sound card of the PC.

### Procedure

1. Open the "Signal Assignment" tab.
2. In the pop-up menu in the "Tag" column you can select "Transfer tag from "Message assignment"" to have all the tags of the message assignment transferred at once to the "Signal Assignment".

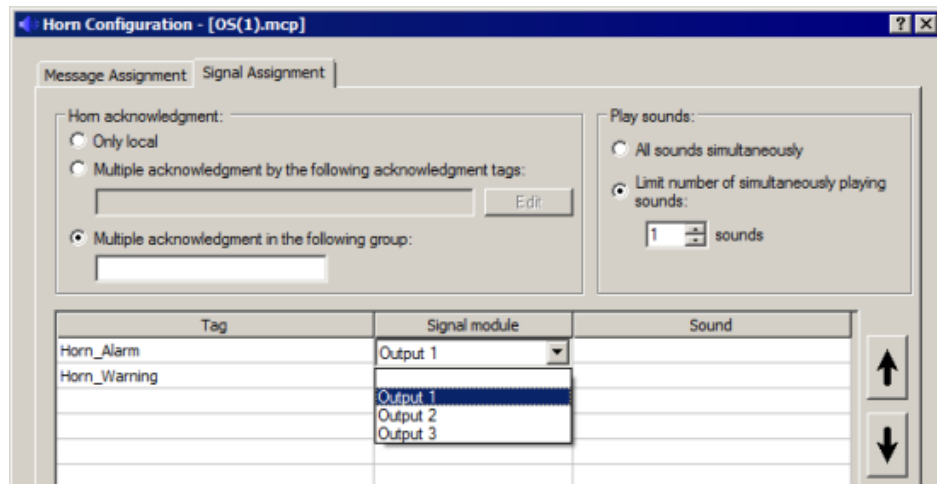
### Note

With a double-click in the field of the "Tag" column you can also select the specified tags individually.



3. Double-click in the "Signal module" column to select one of the three possible hardware outputs of the signal module.

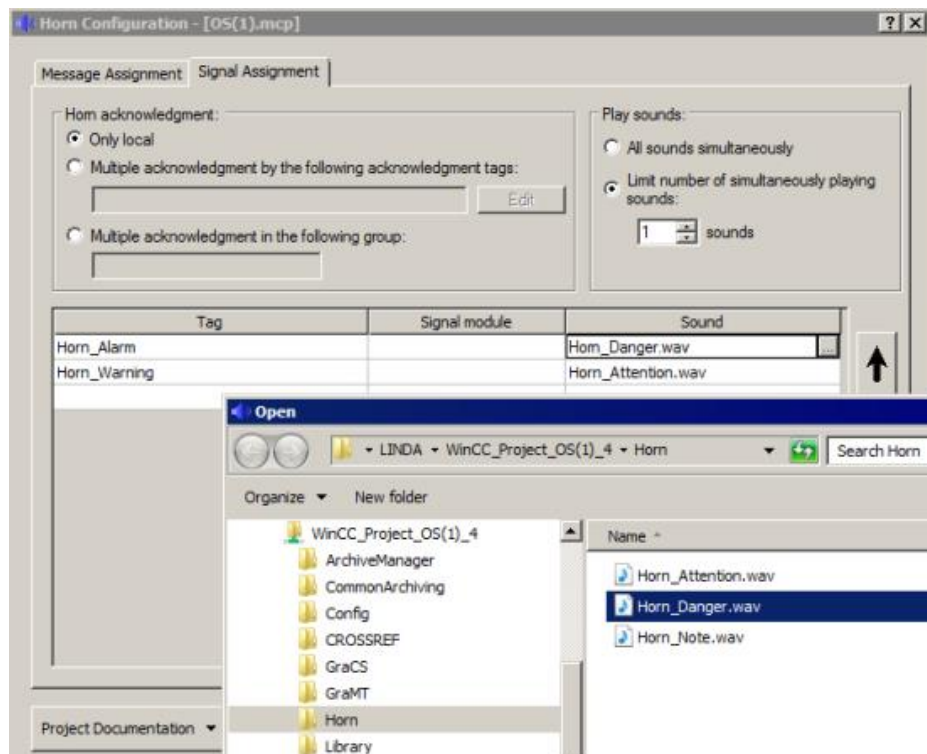
## 6 Assigning Signal Transmitters to a Signal Tag



4. Double-click in the "Sound" column to select one of the existing sound files from the Standard PCS 7 version.

### Note

You can also use your own sound files. Details about creating your own sound files are available in the WinCC Online Help. We would advise you also to save the files and the template files in your project path. In this case the sound files are also saved when the project is saved, and the path details are still correct even after loading the OS station.



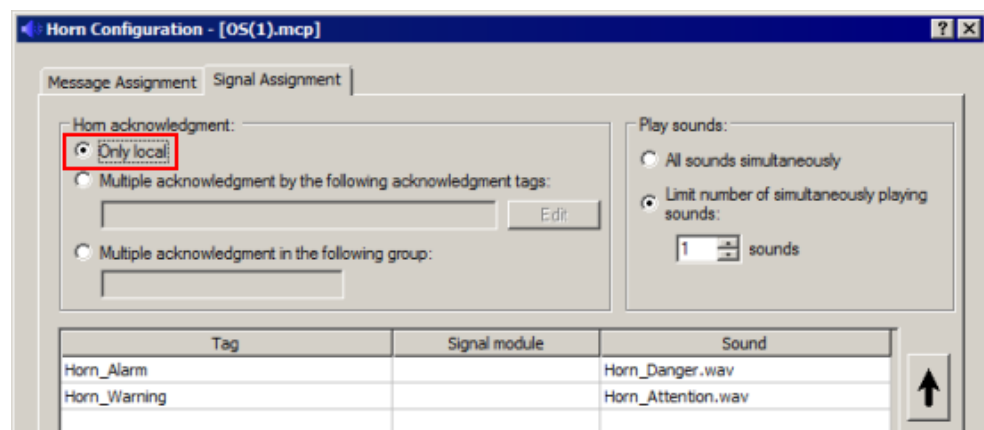
## 7 Configuring the Horn Acknowledgment Behavior

### Introduction

The acknowledgment of the horn can be done either locally by the OS station on which the horn is configured or also by other OS stations through multiple acknowledgment.

### Local acknowledgment

If the acknowledgment is to be exclusively by the local OS station, select the "Only local" under "Horn acknowledgment:".



### Multiple acknowledgment via a group

If you want it to be possible for the horn to be acknowledged also by other OS stations, you have to configure an acknowledgment group. For this, under "Horn acknowledgment:" you select the option "Multiple acknowledgment in the following group:" and enter a group name of your choice.

All OS stations which have the same group name configured form an acknowledgment group. If the "Acknowledge horn" or "Acknowledge message" button is pressed on one of these OS stations, an enabled horn will be acknowledged on all the OS stations configured in the same acknowledgment group.

