

Specification of the technical function „Temperature“

SIMATIC PCS 7

Requirement specification • August 2012

Applikationen & Tools

Answers for industry.

SIEMENS

Siemens Industry Online Support

This article is taken from the Siemens Industry Online Support. The following link takes you directly to the download page of this document:

<http://support.automation.siemens.com/WW/view/en/33412955>

You can also actively use our Technical Forum from the Siemens Industry Online Support regarding this subject. Add your questions, suggestions and problems and discuss them together in our strong forum community:

<http://www.siemens.com/forum-applications>

Warranty and liability

Note

The Application Examples are not binding and do not claim to be complete regarding the circuits shown, equipping and any eventuality. The Application Examples do not represent customer-specific solutions. They are only intended to provide support for typical applications. You are responsible for ensuring that the described products are used correctly. These application examples do not relieve you of the responsibility to use safe practices in application, installation, operation and maintenance. When using these Application Examples, you recognize that we cannot be made liable for any damage/claims beyond the liability clause described. We reserve the right to make changes to these Application Examples at any time without prior notice. If there are any deviations between the recommendations provided in these application examples and other Siemens publications – e.g. Catalogs – the contents of the other documents have priority.

We do not accept any liability for the information contained in this document.

Any claims against us – based on whatever legal reason – resulting from the use of the examples, information, programs, engineering and performance data etc., described in this Application Example shall be excluded. Such an exclusion shall not apply in the case of mandatory liability, e.g. under the German Product Liability Act (“Produkthaftungsgesetz”), in case of intent, gross negligence, or injury of life, body or health, guarantee for the quality of a product, fraudulent concealment of a deficiency or breach of a condition which goes to the root of the contract (“wesentliche Vertragspflichten”). The damages for a breach of a substantial contractual obligation are, however, limited to the foreseeable damage, typical for the type of contract, except in the event of intent or gross negligence or injury to life, body or health. The above provisions do not imply a change of the burden of proof to your detriment.

Any form of duplication or distribution of these Application Examples or excerpts hereof is prohibited without the expressed consent of Siemens Industry Sector.

Table of contents

Warranty and liability	4
1 Introduction	6
1.1 Purpose of the requirement specification.....	6
1.2 P&I Diagram.....	6
1.3 CM configuration.....	6
2 Execution behavior	7
3 System functions	8
4 Connections	9
5 History	10

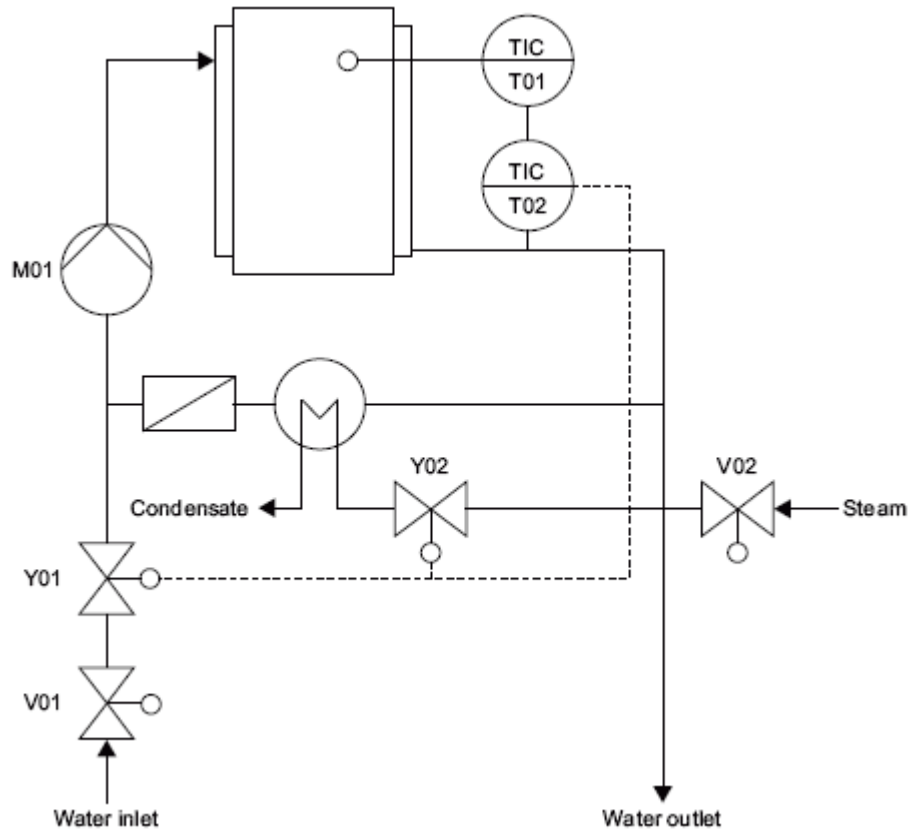
1 Introduction

1.1 Purpose of the requirement specification

This specification is used to describe the tempering basic function.

1.2 P&I Diagram

Figure 1-1



Copyright © Siemens AG 2012 All rights reserved

1.3 CM configuration

Table 1-1

Name	I/O name	CM	Description	Optional
M01	M01	MOTOR	Pump	
V01	V01	VALVE	Inlet valve	
V02	V02	VALVE	Heating steam valve	
T01	T01	CTRL_PID	Primary temperature controller	
T02	T02	CTRL_PID	Secondary temperature controller	

2 Execution behavior

In chemical processes a time-dependent temperature control of the product vessel is required. Therefore the equipment must ensure fast heat input or heat removal. To achieve this, a pressurized water circulation system is used in which a pump circulates the water in the jacket system.

The cooling water is heated indirectly by a heat exchanger. The required temperature is controlled by the steam pressure with a steam inlet control valve. The condensate is removed over a steam trap.

The temperature is controlled by a cascade control. The reference variable for the master (primary) controller is the internal temperature of the vessel and controls the valves for steam and cooling water. The follower (secondary) controller is designed as a split-range controller. The control valves are therefore not controlled by the EM. They operate in the "set externally" mode.

The cascade control is open depending on the level of the vessel. This means that if the tank level no longer ensures that the temperature sensors are immersed in the product, the controller outputs generated from the internal temperature in the master controller are no longer used as a setpoint for the slave controller, but a switchover to direct setpoint input from the EM is performed.

The EM is self-terminating.

Parameter:

- Temperature in °C
- Temperature tolerance in °C
- Hold time in minutes

3 System functions

1. The safety position of the individual basic function elements is defined as follows:
 - Pump M01 => Off
 - Inlet valve V01 => Closed
 - Heating steam valve V02 => Closed
 - Primary temperature controller TIC01 => Off
 - Secondary temperature controller TIC02 => Off
2. Manual operator control of the basic function elements must be possible only in the initial state and in hold.

4 Connections

The basic function forms the connection between control module level and batch level.

This requires that control module level and batch level be provided with a defined interface by the basic function.

5 History

Table 5-1

Version	Date	Modifications
V1.0	04/2009	First version
V2.0	08/2012	Update Design& PCS 7 V8.0