



SIMATIC RTLS

Your path to one complete, customized **real-time locating system**

siemens.com/rtls

SIEMENS

Seamless, precise – and complete

Siemens provides complete end-to-end RTLS solutions: we offer full implementation on a global level thanks to our international footprint, long-standing technical expertise, and know-how in large-scale project management.

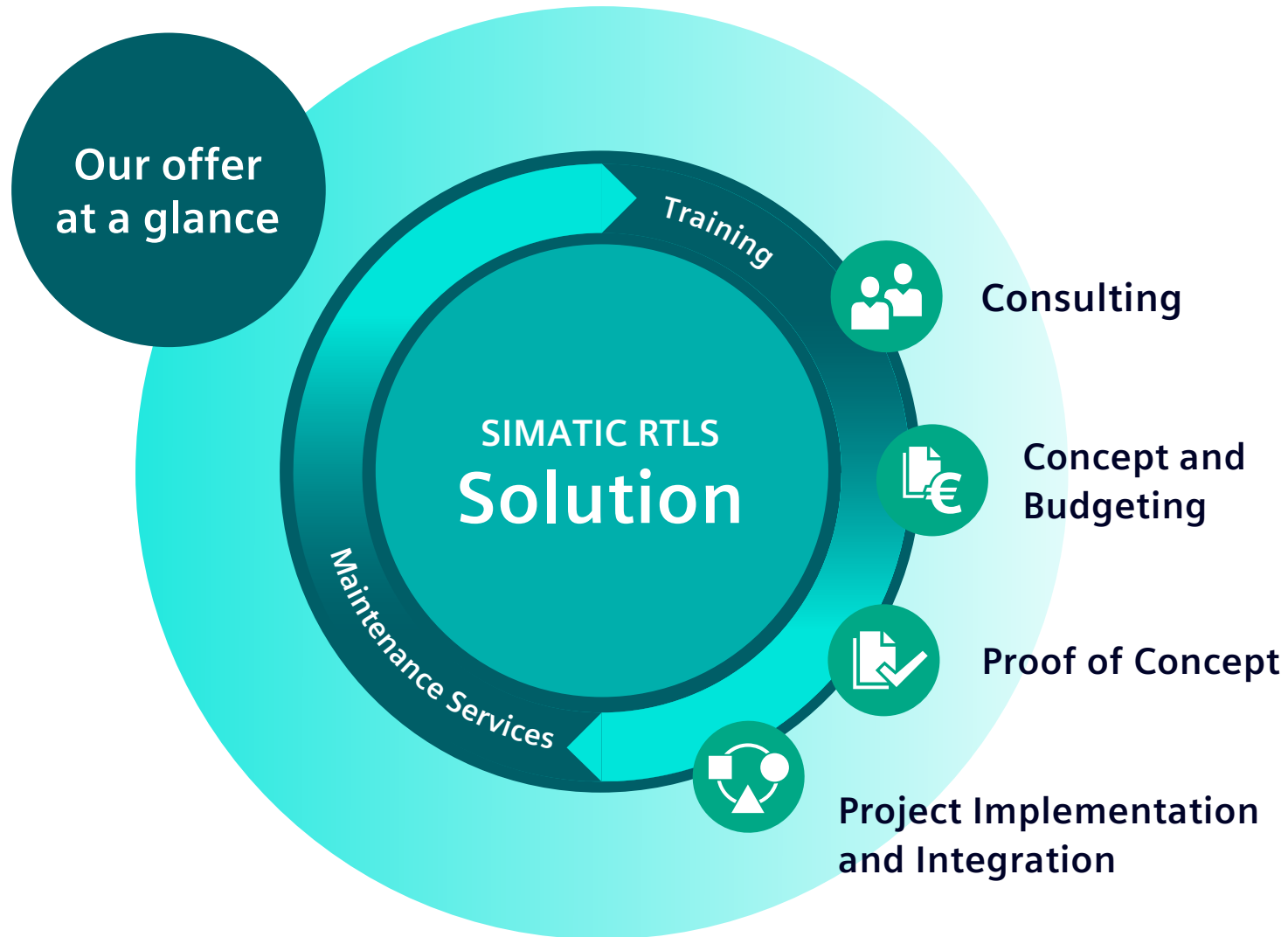
Your path to a customized real-time locating system

When it comes to end-to-end solutions for your digital enterprise, Siemens is your trusted global partner with more than 12 years of RTLS experience with innovative technologies in production and logistics.

Choose to implement a SIMATIC RTLS solution from Siemens and you will have a partner to walk with you the entire way – from consulting and testing the feasibility of your project to implementation and integration.

You will also be supported by Siemens when it comes to training, updates, long-term maintenance and service. Thanks to our international footprint and comprehensive network of local partners around the globe, Siemens is always close by and on site.





| Consulting

The first steps matter the most. That is why it is important to begin with the right choices. Before implementing any SIMATIC RTLS solution, we start with a full consultation in which we discuss your challenges, your requirements – and your possibilities for success.

Individualized insights

With every project, we begin with a full consultation in which we discuss your specific requirements, limitations, and industrial environment. This helps us understand your processes while eliminating ambiguities and defining common goals for the future.

Our experts can then present you with a concept to maximize the potential of your facilities. In particular, they will be able to offer you use cases that are relevant for your particular plant or facility – and a single system to address them.

A partner who understands

Simply put, we take our time to understand the needs of your business and respond with the best possible solution. Talk to our experts for a clear understanding of how a SIMATIC RTLS solution will bring you closer to the digital factory and all its benefits.

And with one partner for the entire duration of your project, you get the best possible advice with no loss of knowledge along the way. Our global project managers have over a decade of experience with large customers who own many facilities in different countries worldwide.



| Concept and Budgeting

A constant exchange of information after the first consultation is a key characteristic of Siemens quality. In this stage: we focus our energies on clarifying any questions you might have, customizing a sound concept, budgeting for it, and building a basis for further cooperation.

Collaborative design

Collaboration with customers is key in the development and fine-tuning of a SIMATIC RTLS solution. Together with you, we create a detailed overview of the current topography and state of your plant or facility. We then combine our technology and architecture to put together an initial concept that addresses multiple use cases.

In good hands

This collaborative process ensures that we remain on the right track for the entirety of the project. Together, we will steer the concept in the right direction to eliminate implementation delays during the project phase. Whatever hardware or software is needed to get your project off the ground, Siemens offers it. This includes site surveys which provide the basis for all locating accuracy.

Precise budgeting

This collaborative work process also offers the peace of mind that comes with precise budgeting. Built with your requirements in mind, our customized concept will describe project phases in detail and provide a full list of materials required for installation. Our experience in implementing such solutions means that we can provide a clear, accurate overview of the costs to be expected.



| Proof of Concept

Most large customers need reassurance that their SIMATIC RTLS solution will be the right one. We understand this. That is why we are happy to put our concepts to the test with a proof of concept (POC).



Feasibility in practice

Offered to all customers, a proof of concept allows us to better assess and prepare for successful project implementation. The on-site testing that comes with a POC gives us an in-depth practical understanding of your project and reduces risk.

You thus get to enjoy the peace of mind that comes with knowing that your investment is going to be implemented without any costly errors. The POC, which is optional, also helps define key performance indicators for the project.

Familiarity in advance

Proof of concepts are also a chance for you and your employees to get familiar with the technology.

As they feature partial integration into the real environment, you will already get to see the benefits of a SIMATIC RTLS solution with measurable improvements in your processes – making the added value of the system visible to your stakeholders.

This is also a chance for your employees to try the system out, gain first-hand experience with it, and potentially discover additional use cases for it.

| Project implementation and integration

Having laid a solid foundation based on consultation, conceptualization and proof of concept, we are now perfectly primed to take the next step: the implementation and integration of your SIMATIC RTLS solution.

Everything you need

Our consultants will walk you through everything you need in this phase of the project. From detailed planning and scheduling: you can be sure that the implementation and integration of your system is well documented and transparent.

You can also rely on us for fast and error-free implementation thanks to our certified Siemens engineers and project managers.



Delivered on time

With their track record and experience implementing SIMATIC RTLS solutions of all sizes, our Siemens engineers and project managers know what needs to be done to get your system off the ground. Our competence in handling time-critical processes means that we can be sure that your system is implemented and integrated on time.

And ready for the future

In addition to serving as a contact person for your SIMATIC RTLS solution, certified experts can also advise you on the entire digital enterprise. Talk to them to discover other ways you can prepare your business for the future.

Certification training

Siemens offers RTLS certification training which covers the complete RTLS solution, including its hardware and software components, in depth. Employees completing this training will be recognized as certified RTLS professionals. This also enables them to take over responsibilities for parts of the project implementation or integration.

| Maintenance services

With Siemens, the journey doesn't end with implementation. We will continue to work with you over the entire lifecycle of your system with training for your employees as well as long-term maintenance and support.

Support over the lifecycle

As with all Siemens products and solutions, you will be offered optional levels of service, maintenance and support for your SIMATIC RTLS solution.

Trained personnel on site and off site will be on hand for fast, thorough support.

Our experts can also advise you on how you can tap the many other benefits of the digital enterprise – benefits such as agile operations, greater productivity, and the development of new business models.

Training for your employees

Siemens offers custom trainings for your employees based on your specific challenges and requirements.

Typical user groups are key users, dev-ops personnel, company electricians and vehicle maintenance engineers.

This will allow your employees to perform service level support independently, and in doing so, reduce recurring costs.

PRECISION FOR AUTOMATION. DRIVEN BY DATA.

A scalable, individualized locating system specifically designed for industrial applications, SIMATIC RTLS reduces search times and optimizes material flow with dynamic, real-time locating data for each and every asset in your production. Implement your individual digitalization strategy and accelerate your business transformation today.

 **Talk to our experts:**
simatic-rtls.industry@siemens.com



Maintenance
Services